

**A LESSON
 WELL
 LEARNED...
 LANCASTER
 FARMING'S
 CLASSIFIED
 ADS
 GET RESULTS!**

For Sale: John Deere 690A trackhoe, excellent condition, less than 100 hours on overhauled motor. Call 717/273-7269 Lebanon

Gas Air Compressor, 150CFM, screw-on trailer, \$2500 717/354-3105 Lancaster Co

Hitachi EX200 track hoe.
 Komatsu D57S-1 loader.
 JD 750E dozer.
 (610)488-7418.

Ingersoll Air Compressor, 40hp w/motor. \$2250 717/354-3105

JD 350 crawler loader, good condition, \$7,500 OBO (717)532-6098

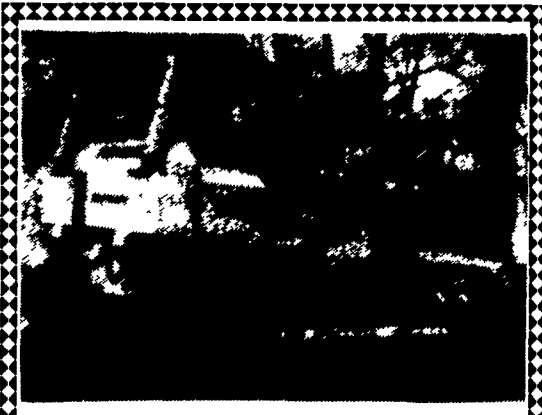
FORKLIFTS
 2,000 TO 15,000 LB
 \$1,000 TO \$12,000
 GAS/LP-DIESEL-ELECTRIC
 Cushion-Pneumatic-Rough Terrain
 New Komatsu Forklifts Available
PA INDUSTRIAL EQUIPMENT
 (610) 369-9778

FORKLIFTS
 Used
 Buy • Sell • Lease

Yale 8000 lb. propane power, 10' lift, good condition.....\$3,500

- * Yale 5000 Lb, Air Tires, Power Steering, 11' lift..... \$5,500
- * Clark, 2000 Lb. Propane..... \$1,700
- * Hyster 2000 Lb., Air Tires..... \$1,950
- * Yale 3000 Lb., Propane..... \$2,800
- * A-C 4000 Lb., Propane..... \$4,850

Universal Equipment Inc.
 (717) 533-7377



FAIT-ALLIS
 11-B Ex-Shape, 75% U/C Tilt-Blade
 Reduced ~~\$12,000~~ \$10,000
N.J. 908-449-6140

STONE CREEK RENTALS
 RENT FOR LESS

- CRAWLER DOZERS •
- CRAWLER LOADERS •
- HYDRAULIC EXCAVATORS •
- LOADER BACKHOES •
- MINI EXCAVATORS •
- TRENCHERS •
- WOOD CHIPPER •

Daily - Weekly - Monthly
 371 Fleetwood Road • Mertztown, PA 19539
610/682-4030

Case 252, 602, 1102 Rollers Demonstrators
 Call For Special Pricing

1986 Case 580E, 2WD, standard hoe, canopy.....\$16,500
 (2) 580K, cab, extend-a-hoe, 4WD.....P.O.R.
 580 Super K, Cab, extend-a-hoe, 4WD, only 1150 hours.....P.O.R.
 Case 580C loader backhoe, plumbed for hammer.....P.O.R.
 1991 Case 590, cab, extend-a-hoe, 4WD...P.O.R.

Rental Returns
 602B, 1102 Rollers in Stock
 Also Stanley 695 Hammer
 Used Trailers in Stock Call For Information

Vernon E. Stup Co.
 5859 Urbana Pike
 Frederick, Md. 21701
301-663-3185



"Check out these great used equipment values from Plasterer Equipment Company!!"

JOHN DEERE

• JD 710B Cab,2WD,Std Hoe,Approx. 6,800 Hrs	\$28,000.00
• JD 510C Cab,2WD,Std Hoe w/Aux Plumbing	\$34,900.00
• JD 510 ROPS,2WD,Std Hoe,Approx 4,400 Hrs	\$16,500.00
• JD 410C Cab,A/C,4x4,Std Hoe,Approx 3,350 Hrs	\$39,500.00
• JD 410C Cab,4x4,Ext. Hoe,Approx 6,650 Hrs	\$37,500.00
• JD 410B Cab,2WD,Std. Hoe,Approx 6,900 Hrs	\$19,500.00
• JD 410 ROPS,2WD,Std. Hoe,Approx 5,700 Hrs	\$12,900.00
• JD 310D Cab,4x4,Std. Hoe, Approx 2,150 Hrs	**\$46,000.00
Dealer Rental Fleet, Well Serviced	
• JD 310D Cab,4x4,Std Hoe,Approx 2,600 Hrs	\$39,500.00
• JD 310C Cab,4x4,Std. Hoe,Approx 6,400 Hrs	\$31,500.00
• JD 310B ROPS,2WD,Std. Hoe, Approx 5,200 Hrs	\$13,900.00
• JD 490E 8'2" Arm,24" Pads,Heavy Duty Bucket	**\$76,000.00
Aux. Hydraulics, Dealer Rental Fleet	
• JD 690E 9'6" Arm, 30" Pads, Heavy Duty Bucket	**\$97,000.00
Aux. Hydraulics, Dealer Rental Fleet	

**** Dealer Rental Fleet Quality for 0% Financing - Call Today!!**

LEBANON
 2550 E. Cumberland St
 Lebanon, PA. 17042
 (717)273-2616

BETHLEHEM
 400 Stoke Park Road
 Bethlehem, PA. 18017
 (610)867-4657

1987 Cat 935B, One Owner, 2100 Original Hours, Original Paint, Good Condition..... \$24,000

JD 450C crawler loader, good U/C, cleaned & painted.....\$13,000

COMING IN
 JD 510B Tractor Loader Backhoe
 JD 450C crawler loader w/backhoe
 Flat Allis FL5 crawler loader

JLG60F man lift, 8' basket w/rotator.....\$16,500

MECHANICS SPECIAL:
 JD 450C Crawler Loader, ROPS, Good U.C., Needs Steering Clutch Housing
\$9,500

Case 580B tractor/loader/backhoe diesel, cab, good condition.....\$9,000

Financing & Lease Purchase Available
Weaver's Equipment Sales
 Rte 3 Box 440 Milton Pa
 Phone: 717-742-2712 No Sunday Calls

JD 755, Cab, Ripper, New Teeth On Bucket, New Pins, Bushings, Roller & Sprockets, Nice.....\$23,000

Case 1450, 80% U/N, 2 1/4 Yd. Bucket w/Teeth..... \$14,000

87 JD 510C Turbo, Cab, Good Rubber.....\$21,000

86 JD 710B Turbo, 800 Hrs., Full Cab, Good Rubber.....\$26,000

86 Kawasaki 85Z11 S/N 2C0268

88 Case 1155E 4,100 hr. G.P. bucket with teeth, UC 50% canopy

87 John Deere 310C 2 wheel drive,

85 JD 410 B, 2 wheel drive, full cab

Swinger 3460 6000 Lb. 34' Reach, Perkins dsl, new paint.....\$15,000

86 JCB 525B, 4x4, 5000 lb. shoot boom

Job handler 5000 lb. shoot boom Cummins diesel.....\$15,000

AA Equipment
 717/529-2512
 No Sunday Calls

1797 Robert Fulton Hwy., Quarryville, PA 17566
 • We Buy & Sell
 • Financing Or Lease Purchase Available

1a CONSTRUCTION EQUIPMENT

1972 Case 450 4 way & blade dozer, undercarriage 70%, cab, good running condition. \$7,500 (215)234-4525

1994 Ford NH skid loader L565, like new, 25 hours, \$16,500 (610)458-5712

5000 lb pneumatic tire forklift, triple mast, side shifter, \$3900, Skid loader for sale Call for more detail 717-225-3798.

'79 Case 450B crawler loader w/backhoe, good condition, excellent U/C, \$15,500 (717)752-7131

DISMANTLING FOR PARTS Just arrived for parts AC HD-6 dozer w/straight blade Carco winch, 344 diesel, U/C fair All parts available **BALANDA EQUIPMENT** P O Box 407 RT 29 Palm, PA 18070. 1-800-322-8030

Allis 545 rubber tire loader, \$14,500, Trojan 2000 rubber tire loader, \$12,500; Cae W30 rubber tire loader, \$18,500; JD 690B excavator, \$22,500. 6 1 0 - 9 4 4 - 9 8 7 1 . 610-944-7005

Barber Green 873 Paver (tow-behind type) w/ heated vibratory screed-1-ton roller-plate compactor - \$3500/package or will swap for commercial type chipper or tractor w/3pt & mower 215/822-7633 no Sunday calls

DISMANTLING FOR PARTS Just arrived for parts CAT 922 94A loader complete less loader boom

and bucket, rest of parts available **BALANDA EQUIPMENT** P O Box 407 RT 29 Palm, PA 18070 1-800-322-8030

Case backhoe 580D, extend-a-hoe, 2700 hours, cab, air, \$14,500, Ford 555 backhoe, great shape, \$9500, roll off truck, 1983 Ford 8000, single axle, w/1986 Galbraith 30,000lb hoist, \$15,000, 1985 Ford F250 4x4, V8 auto, plow, salt spreader, tool boxes, ladder racks, new paint & everything else, \$5800 610/630-6067

Cat 951-B loader \$8,000 Ford 550 loader/hoe \$8,000 JD 450-B dozer, 6-way, new motor, rebuilt trans. \$9,500 (717)698-8311

Continental diesel engines turbo charged fan to fly-wheel plus clutch and pressure plate and adapter ring \$1,495 Discount on 2 or more Delivery available. (412)423-5925

Deutz F5L912, 600 hrs, like new, \$4500 215-572-7700

Diesel Air Compressor, 180CFM, screw-on trailer, \$3750 717/354-3105 Lancaster Co

Farmi Knuckleboom loader w/grapple and hydraulics, 3pt hitch, Fitz farm tractor, \$4200 215-572-7700.

Forklift Wholesalers 2000 to 92000 Lb. Lifts Available 70 in Stock. Sale-Rental-Finance w/ Warranty. Chalk Equipment (410)686-6800.

Forklifts, Good selection of used forklifts. 3000# to 8000# 717-354-3105. Lanco