

# Lancaster Farming

Vol. 40 No. 46

60¢ Per Copy

Lancaster Farming, Saturday, September 23, 1995

Five Sections

\$25.00 Per Year

## All-American Dairy Show Is For Every Dairy Farmer

VERNON ACHENBACH JR.  
Lancaster Farming Staff

HARRISBURG (Dauphin Co.) — Today starts the 1995 Pennsylvania All-American Dairy Show (PAADS), scheduled to run through Sept. 28 at the state Farm Show Complex in Harrisburg.

It kicks off tonight with the state's dairy princess pageant and ends Thursday after the naming of the supreme champion.

This year, organizers of the Pen-

sylvania All-American Dairy Show have added an entire week's worth of educational programs.

The result is, that perhaps truly for the first time, the PAADS has become the premier event for all dairy enthusiasts, from commercial milk sales-oriented operators to those with a primary focus on elite breeding stock.

"I'm really excited," said Lolly Leshner, fund raising coordinator, "because the show has a lot to offer

the commercial dairyman. It's not just a breeder's show anymore. There's the trade show, the commercial education exhibits, sales .. There's just a lot in just four days."

The Pa. All-American Dairy Show is the largest dairy event in the state with five national shows, a regional show and two state shows covering the six main dairy breeds.

There are also several important cattle sales held during the week, a youth dairy cattle judging contest and awards banquet, and the state dairy princess pageant.

On Thursday night, one-at-a-time under the beam of a bright spotlight, the grand champions of each of the breed shows are to be lead into the darkened Large Arena of the Farm Show Complex for the final competition — that of supreme champion.

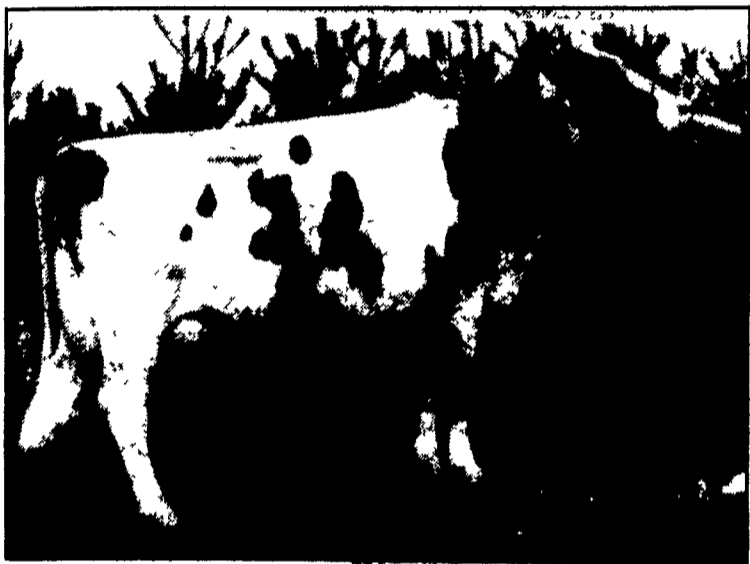
The purse for the winner of the supreme champion is \$1,000, according to Leshner. All six of the the breed grand champions receive a special premium in that event. It is a special occurrence to have six breed grand champions in a show ring in competition at one time. Of all premiums dispursed last

year, Leshner said \$74,000 was returned to exhibitors.

What makes this year even more special is that during the week, while all these shows, sales and events are occurring, for the first time a full series and variety of free dairy-related educational programs are to be offered.

The relatively new Northeast Building in the complex has allowed show organizers to create a "Dairy Activities Center" (DAC). The center is conveniently located on the first floor and is adjacent to

(Turn to Page A20)



Remember the All-American supreme champion from last year? Fair-Hill Enhancer Song-ET is Ex-95 EEEE and owned by Marion Andrew, Centerville, Md. Enhancer Song has just finished her 5-year-old record of nearly 46,000 pounds of milk with 1190f, 1219p. This is her second record over 40,000m and she is part of the first cow family of the breed to have seven Gold Medal Dams in a row. The climax of the 1995 All-American will come next Thursday when a new supreme champion will be named in the large arena of the Farm Show Complex in Harrisburg.

## Gov. Ridge Declares Drought Emergency

VERNON ACHENBACH JR.  
Lancaster Farming Staff

HARRISBURG (Dauphin Co.) — State Gov. Tom Ridge on Wednesday declared a drought emergency for 32 counties that primarily form those that supply headwater drainage for the Susquehanna and Delaware rivers.

Not included in the official "emergency" declaration are counties along the lower reaches of the river and western counties, though all areas of the state have been suffering from drought conditions. The remainder of the state is under some level of water conservation recommendation.

The emergency declaration was made as flows in the Susquehanna have reached 10-year lows.

Bedrock is evident everywhere in the state's central river and boat traffic is almost nonexistent except for occasional canoes.

Though a cold front moving into the state was to have brought rain Friday, officials said an inch of rain per week, for a series of weeks, was needed to recharge groundwater. Almost all surface water flows, except during certain storm events, come from groundwater, as does all well water. In addition to those counties

associated with the headwaters of the Susquehanna and Delaware rivers, Adams County, which serves as part of the headwaters for the Potomac River, is also under a state of drought emergency.

There are actually three official drought status levels upon the entire state.

Thirty-two counties were under the drought emergency status as of Friday morning, 11 were under drought warning status, and 24 were under drought watch.

Mandatory restrictions apply to all, whether the water source is public or private. Enforcement of restrictions is to be in place and charges are to be filed against the USDA's Consolidated Farm Service Agency.

"On the recommendation of Lt. Gov. Mark Schweiker and his drought task force, this emergency declaration places mandatory restrictions on non-essential water use for 6.5 million residents ..."

He also urged residents in the remaining counties to use common sense and conservation measures as well to prevent widening the mandatory restrictions.

"The need for conservation has never been so critical, and I'm ask-

(Turn to Page A39)

## Farm Bill Development Driven By Budget Cut Agenda

EVERETT NEWSWANGER  
Managing Editor

HARRISBURG (Dauphin Co.)—The climate in Washington, DC, surrounding the development of a new farm bill is different than when past farm bills have been designed. That's the report given to the Council of Farm Organizations at their regular meeting Monday, by James Dunn, professor of Ag Economics at Penn State. Dunn is working in the office of US Senator Rick Santorum (R-PA) until the

new farm bill is completed.

The 1990 farm bill was the largest piece of legislation ever passed (1,000 pages) and contained items on food stamps, school lunches, women, infant, and children programs and various nutrition programs in addition to the regular farm commodities. This bill contains over half of the national budget.

In the past the farm bill was driven by regional farm interests across party lines with other non-

farm items included to develop the political interest that is lacking from the small voter segment of farmers.

But this year the farm bill is driven, not along regional lines, but by the budget reduction agenda. The by-partisan nature of the ag committee has changed with each side trying to make political hay out of the other side's cost reduction proposals. Right now, Dunn said the senate ag committee is

(Turn to Page A29)

## Deb Landis Is New Poultry Ambassador

LOU ANN GOOD

Lancaster Farming Staff  
LANCASTER (Lancaster Co.) — For the first time, the Lancaster County Poultry Ambassador (formerly called poultry queen) has no former ties to the poultry industry.

Unlike her predecessors, Deb Landis neither lives on a poultry farm nor do her parents work for the industry.

Deb's credentials as a spokesperson for the industry comes from her experiences in communicating with people from different backgrounds.

"She is superbly qualified," said Guy Martin, who heads the search committee for the Lancaster County Poultry Association. "We wanted someone who could well represent the industry to the non-farming community and be a spokesperson for it."

Deb is taking a cram course on learning industry facts and nutritional values of poultry meat and

(Turn to Page A25)

*Editor's Note: The Northeast Poultry Show is scheduled September 26-28 at the Host Resort in Lancaster. A special section of "Poultry Notes" in this issue features this show. In addition, other features, management reports, and advertising messages are included.*



Unlike her predecessors, Deb Landis neither lives on a poultry farm nor do her parents work for the industry, but she has plenty of experience in communicating with people from diverse backgrounds. This ability is a plus in fulfilling her duties as poultry ambassador.