

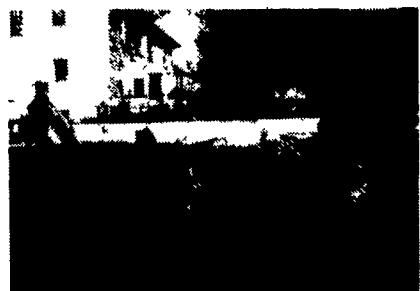
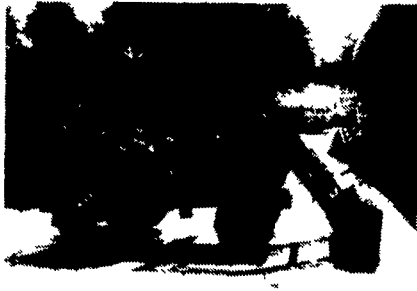
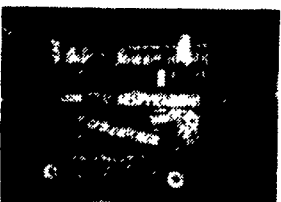
KRA

**EDWARD
MILLER AUCTION COMPANY**

KRA

**1st ANNUAL K.R.A. AUCTION
KEYSTONE RENTERS ASSO.
SAT., OCT. 7th 1995****9:00 A.M.**

(To Be Held At The York Fairgrounds, York, PA)

DIRECTIONS: Off I-83 Take Exit 9E, To Rt. #30 West To The Carlisle Rd. or Rt. #74 Exit, Turn Left Or South On Rt. 74 Follow To Fairgrounds on Right Hand Side, Watch For Signs.**PHONE: (717) 840-4060 EDWARD MILLER****NOTE: The KRA Has Gotten Together In Association w/Ed Miller Auctioneering To Form A Consignment Sale To Be Held Annually For The Disbursement of Construction and Party Goods (Hope You Can Attend).****TERMS: Cash, Travelers Checks, Local PA Checks, w/Proper ID, Out of State Checks Must Be Accompanied By Current Letter Of Credit, Unless Approved Prior To Sale. (Rights Reserved To Hold Merchandise Till Checks Clear)****SATURDAY, OCTOBER 7th 9:00 A.M.**

1 Caterpillar 416 Series II Diesel Backhoe Enclosed Cab w/app. 1000 hrs., 2 T5B Terramite 20 hp backhoes w/335 hrs. & one w/200 hrs. rebuilt motor, 2 John Deere 850 4WD Tractors both w/#75 John Deere loaders, diesel H&L range 5' champ bucket boom towable battery oper. 30' H, 270° Swing 1 Bobcat 100 Mini excavator track drive diesel w/1055 hrs. & 12" & 24" buckets, Bobcat #943 skid loader w/72" bucket engine overhauled diesel, John Deere #125 skid loader gas new tires, engine w/66" bucket, Kwik-Way 72" hydraulic angle snow blade fits Bobcats, Bobcat #743 5' angle sweeper broom; 1985 Ford club wagon van dual air auto, 11 pass, 95K, 1984 F-350 12' box truck 82K 400 cub., Bil-Jax Cougar XLT 2900 battery operated trailered boom, up-right SL-20 scissor lift battery oper., 2 Ingersol-Rand 600 CFM Detroit diesel towable air compressors 6634 hrs/6318 hrs., Bobcat T-136 riding trencher 764 hrs., Bobcat T-116 riding trencher 16 hp, Ditch Witch 2310 riding trencher w/front blade 355 hrs. gas, 2 Ditch Witch 1010 10 hp walk behind trenchers, Ditch Witch C-99 10 HP walk behind trencher promark 310 23 hp limb chipper 5" cap, Cub Cadet #1517 hydro. lawn tractor 398 hrs., 2 Ingersol-Rand SP-20 walk behind 29" vibratory 2 ton rollers, New Holland 16 hp tractor. **AIR COMPRESSORS:** 2 Smith 100 CFM & 2 Smith 160 CFM tow behind air compressors, 2 Emglo 3/4 hp elec. air comp. 125 PSI, 1 Emglo 5 hp gas compressor, 4 sections 3/4"x50 air hose, 2 #3 pt. 5' Bush Hog mowers, 4 automobile transporters, 1-Kar-Caddy, 3 Demco, 8'x8' snowmobile trailer, 6'x9' utility trailer, Easy-lift 21' model 31 conveyor belt buckle lift 10" w, green Ironmaster 8 HP, 24 ton log splitter, I.C. 8 HP 24 ton La-Font log splitter, 3.3 pt. York rake, 2 4'x8' lighted arrow signs, bill jacks 23 ft. Cat lift battery op. **MASONRY:** 3 Mueller 5 HP gas motors mixers, 2 Mueller 36" 5 HP power trowlers, 1 Kelly 42" 5 HP power trowler, 2 Champion 5 HP power trowlers, 15 sets of scaffolding with braces, Bil-Jax Mueller 8 HP mortar mixer, Champion 4 HP 36" power trowler, 8 HP 14" concrete walk behind saw, 1/2 HP Taiwan metal cut off saw, 1 groundhog 2 man post hole digger, 2 general 5 HP 2 man post hole digger, 2 Snapper 8 HP rear tiller, Landa 1000 PSI 5 HP power washer, Mighty Mac 5 HP limb chipper, 5 HP Hahn thatcher, 3.5 HP short block B&S engine, new 5 HP Tecumseh, over-all cellulose insulation blowing machine, (needs blower), 2 Steamex carpet cleaners, Homelite 3000 watt generator, 3 HP gold blat power screed, 4 Bosch rotary hammer drills, 1 Landa 2000 pressure washer, Hobart 220 gas welder, 2 Merry tiller front tillers 4 HP, 1 Mange rear tiller, steel 085 chain saw, 2 Milwaukee 5000 RPM grinders, 2 Bosch 1333 elec. power cut off saws, 2 metal detectors, 2 Coleman 12 ft. 500 watt lights, 2 Model L Sinco air stapler, 1 model PW generators, 4000 w. 2250 w. 2 5500 w., walk behind & tow behind lawn sweepers, 1 Merry Mac 5 HP chipper mulcher, 5 HP model 206 walk behind sweepster, 100 gal. Briggs & Stratton towable 5 HP orchard sprayer, Miller 200 amp arc welder on cart, bill jacks 11 HP hydraulic post hole digger, 2 1000 w. 15' light towers, 1 Echo concrete planer, trim rite 3.6 HP lawn edgers, Hero airless paint sprayer, Poulan 16" & 20" chain saws, 40', 32', 36' alum. ext. ladders, Westinghouse 180-235 amp arc welder, over-Lowe 3 HP vibrator tamper, Lindsey #15 9 HP air comp. & #25 sand blasting system w/hose, Lindey 200 lb. pot sandblaster, Ryan 7 HP side cutter, Bluebird 3 HP detacher, Ryan string trimmer.

Little Beaver 3 HP 1 man auger, asbestos shingle cutter, belt sanders, Milwaukee 1/2" drive, Mr. Steam carpet cleaner, Little Beaver 10 HP hydraulic single man auger, Karcher elec/kero. 9000 PSI thermo controlled steam & water cleaner w/chemical injection, 36" towable lawn aerator, 3 Steamex carpet cleaners w/upholstery attach., 3 2 wheel app. dolleys, B&D rotary hammer drill, Little Wonder lawn edger, Kinco 4 HP 40" sickle mower, 1 4' York rake, 2 Echo chain saws, 1 Echo 8 HP 14" walk behind concrete saw, 4 Colonial wall paper steamers, 2 Snapper 5 HP front tiller, Coleman 16,000 PSI 8 HP pressure washer, B&D wet & dry shop vac, Billy Goat 5 HP gas lawn vacuum, Briggs & Stratton 3 HP 28' shingle lift, 12 V-Buck barricades, Honda F500 rear tiller, 5 HP Clark 13" Floor polisher, Gandy 36" spreader, B&D Sawzall, Rigid pipe reamer, tubing cutter & pipe cutter, and 3 legged tripod, bolt cutters, berry fast 8 & 16 penny framing air nailer, 4 22 cal. stud guns w/nails & shot, log chain, 12 V-buck barricades w/6 volt flashers, 4 250,000 BTU LP heaters, Loro pneumatic 2" trash pump, New stone 2" trash pump, Kawasaki 2" trash pump, Marlowe 8 HP 3" trash pump 2 B&S 5 HP 3" trash pumps, 2 new car top carriers, Miller engine hoist, Georgia buggy, Clipper floor saw, Toro snopup snow thrower.

PARTY ITEMS & TENTS: 2, 20'x20' yellow & white 9 pole tents, 1 10'x10' easy up tent, 6 4'x8' sections of Parca dance floor, strong 6 lens theatrical spotlight, RAC Camcorder w/case, 1 VCR recorder, 16 MM projector, 200 Samsonite blue chairs, 5 8' wood tables, 100 cup coffee maker, 400 white Samsonite chairs, wheel chair, marble beer meister dispenser, super cooler, 2 double burner chafers, 70 old fashioned on the rock glasses, 40 high ball glasses, 18 furniture pads.

And Many Many Other Items Not Listed**EDWARD E. MILLER AUCTIONS
PA #2331**