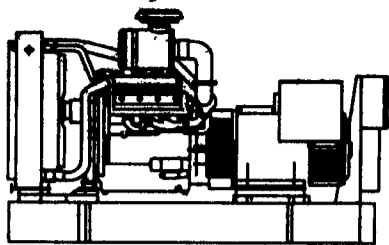


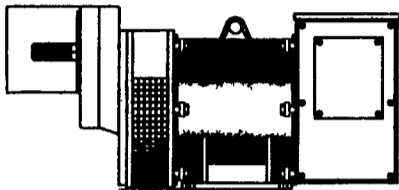
# GENERATOR SYSTEMS

1-800-779-8809



New & Used 5 to 2500 KW  
Diesel • Propane • Natural Gas

24 Hour Emergency Service  
Sales - Installation  
Maintenance Contracts • Rentals



10 To 150 KW 1800 RPM Brushless  
Tractor Driven Generators

**DYNA TECH<sup>®</sup> Ind.**  
Dynamic Technologies

**DYNA-TECH INDUSTRIES**

602 E. Evergreen Rd., Lebanon, PA 17042  
717-274-8899 Fax 274-5334

Ask About Our Lightning & Surge Protection Units  
Panel Mount • Plug-In • Electric Fence Protection

## IH TRACTOR PARTS

Including Crawler & Construction Parts

### BATES CORPORATION

14th AND FIR RD., BOURBON, IN 46504

PARTS DISMANTLED, CLEANED & READY FOR SHIPMENT  
WE SHIP UPS, TRUCK, BUS

Best Prices On Factory Rebuilt TA's & Clutches.

NEW REPLACEMENT PARTS

CALL THE IH PARTS SPECIALISTS  
TOLL FREE 1-800-248-2955

## FORRESTER FARM EQUIPMENT LTD.

1475 Orchard Rd. Chambersburg, PA 17201

Phone: 717-263-0705

Sales-Parts-Service



### BEST BUYS IN USED FARM EQUIPMENT

- |  |  |
|--|--|
| Ford 8N w/Loader                             | (2) NH 479 Haybines                    |
| Ford 2120 w/Loader                           | NH TR70 Combine                        |
| Ford 7840, 2WD                               | NH 15 ft. Flexhead                     |
| Ford 9700, Cab & Air                         | Alamo Batwing Mower 15 Ft.             |
| Ford TW25, 4WD, Cab & Air                    | New 6 Row White Cultivator             |
| IH 1086, Good Cond.                          | NH 479 9' Haybine                      |
| Ford 555 TLB, 2 WD, 4 Post, 2,000 Hrs., 1981 | (2) NH 489 Haybine                     |
| JD 850, 2WD                                  | NH 770 Chopper w/Hay Head & 2 Row Corn |
| JD 2010 Crawler Loader                       | NH 770 Chopper & Grass Head            |
| (3) NH 785 Skid Loaders                      | Gehl Forage Box                        |
| NH 445 Skid Loader                           | IH Manure Spreader, 1 Yr. Old          |
| Koehring Skid Loader                         | OMC 590 Round Baler                    |
| NH 553 Skid Loader, 120 hrs.                 |  |
| NH 411 Disbine                               |  |
| NH 1469 Haybine                              |  |

Located: 1 Mile Off Exit 8, On 696 North To Orchard Rd.

Hours: 8:30-5:00 Mon. Thru Fri.  
8:30-12:00 Saturday

HOURS: Mon.-Fri. 9-8  
Saturday 9-2  
Sunday - Closed

(717) 944-0318

FOR MORE INFO  
CALL OR WRITE

DIRECTIONS TO OUR MIDDLETOWN STORE- On your road map, we are on Route 230 mid way between Middletown & Elizabethtown. Take the Toll House Rd. exit off Rt. 283, turn and go to stop at Rt. 230, go east on 230 1-1/2 ml. on the right.



DEPARTMENT LT  
4204 EAST HARRISBURG PIKE  
MIDDLETOWN, PA 17067

### AUTOBODY PARTS, PAINTS & SUPPLIES



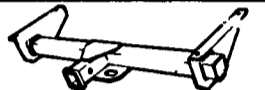
- ACRYLIC ENAMEL PAINT AS LOW AS \$28.95
- URETHANE HARDENER DOES A GAL. \$12.95
- SANDPAPER-6" DA SELF ADHESIVE, 100 PER ROLL LOW AS \$18.50. ALSO DRY BACK DA, WET & DRY SHEETS, LONG FILE!
- 100% OF OTHER ITEMS AT BIG SAVINGS!!

- 73-79 CHEVY, FORD, TK FENDERS \$49.95
- BODY FILLER-CASE OF 4-GAL. \$33.95

WE HAVE 100s OF HAND TOOLS, AUTO PARTS, STATIONARY EQUIPMENT AND MORE AT THE STORE. STOP OUT AND BROWSE

### "TRAILER PARTS"

ANGLE & CHANNEL IRON,  
BOX TUBING, LIGHTS  
AXLES, COUPLERS, WIRING,  
CHAINS & TIEDOWNS,  
Etc., Etc.



CLASS III HITCH RECEIVER  
10,000 Lb. MGTWR, In Stock For Most Domestic & Import Pickup Trucks & Vans

FOR MOST POPULAR FORD CHEVY & DODGE PICKUPS and FORD EXPLORER KIT OTHER APPLICATIONS UP TO \$99.95



\$79.95

### AIR COMPRESSORS

8 H.P. VERTICAL ASME CODED TANKS, 2-STAGE PUMPS, CAST IRON CYLINDER, INDUSTRIAL MODELS W/MAG STARTER IF REQ.



LOW AS \$899.00 ALSO 7 1/2 H.P. AVAILABLE



SAND BLASTERS OF MANY SIZES, CUTS RUST IN ONLY MINUTES

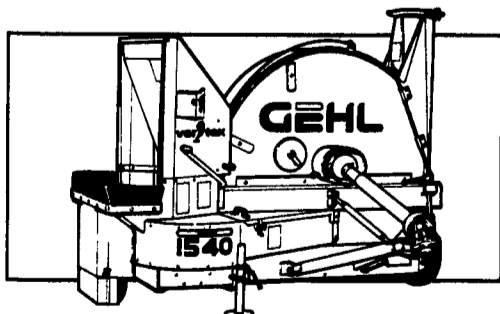
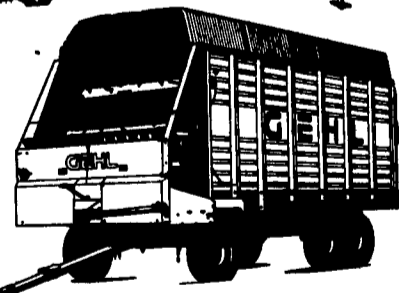
DW OGG

## FALL ROUND UP SALE

NOW IS THE TIME TO CORRAL SUPER SAVINGS ON YOUR BEST DEAL!

DW OGG

GEHL



We have the Gehl equipment you need to get your fall harvest done. Save time and \$\$\$ this winter — consider our manure handling & feed making needs now. We have machines in stock to choose from.



MASSEY FERGUSON

Beat the heat. Cut the cold. Silence the noise.



## SOUND ADVICE

How can you make a new MF 300 Series tractor even more productive and enjoyable?

Get it with a HiLine cab.

Work in year-round comfort with "Dual-Level" heating and air conditioning. Improve your night vision with four extra work lights. And reduce the ringing ears and stress from engine and implement noise.

The best-selling brand of tractors in the Western World are an even better value with an MF HiLine cab. Check one out today at your nearby Massey Ferguson dealer.

### 4 Models To Choose From!

Massey Ferguson HiLine Tractors

horsepower*	66	73	70	88	83	88	95
4-wheel drive	opt	opt	opt	opt	opt	opt	opt
8-sp. transmission	std.	std.	std.	std.	std.	std.	std.
12-sp. Synchronesh	std.	std.	std.	std.	std.	std.	std.
12 x 12 Side Shift			opt.	opt.			std.

\*Manufacturer's rated PTO horsepower

## BEFCO EQUIPMENT

- |   |            |
|---|------------|
| BM6-900 Chipper, 30-50HP                | \$3,995.00 |
| DM5-111 Disc Mower, 3 Pt                | \$3,995.00 |
| BM6-800 Chipper, 30-50HP                | \$3,250.00 |
| C25 60" Finishing Mower                 | \$1,595.00 |
| C15 60" Finishing Mower                 | \$1,295.00 |
| Rotary tillers — 50-74" Models In Stock |            |

Spin Spreaders - Several Sizes To Choose From



- |  |            |
|--|------------|
| RM990-W 90" Finishing Mower                | \$2,995.00 |
| RM550 60" Finishing Mower                  | \$1,795.00 |
| MD80 80" Finishing Mower                   | \$2,995.00 |
| 318 Batwing Mower — Several To Choose From |            |

### Used Equipment

Run down this listing to check availability of the used equipment on your "want list". Call for pricing and store location. All reasonable offers considered.

Gehl 1500A Round Baler; White 5100 Corn Planter; Gehl HA1100 Pickup Head; Gehl HA900 Pickup Head; New Holland 770N2 Corn Head; Gehl F7190 Feeder Cart; Gehl MX135 Grinder Mixer; Gehl 800 Pull-Type Forage Harvester w/electric controls; Gehl 4615 Skid Loader; MF Model 85 or 90 Loader w/ Bucket; IH 990 Mower Conditioner; New Idea MC33 Cutditioner; Gehl MC2140 Mower Conditioner; NH 488 Haybine; NH 499 Haybine; 3-Bottom Plow; IH 411 4-16's Plow; Jacobsen 548 Seeder; Century 500 Gal. Sprayer; Martin 1678 V-Spreader; Gehl MS322 Manure Spreader; MF 1045 4WD Tractor; Unverferth 28' S-tine Harrow; MF 253 Tractor; NH 57 3-point Rake; Tonutti 9'4" PT Rotary Hay Rake; Scag STH18KH Ride Behind Mower; New Gravelly Equipment Including Promaster 300, Pro 200, 14G & 16G; Case/IH 8530 Square Baler w/Thrower; 7165 PT Harvester, reconditioned; 7140 PT Harvester, parts only; 1060 Disc Mower (Two); 1120 Mower Conditioner (two); 1095 Mower Conditioner; 1160 Mower Conditioner; MF 253 2WD Tractor; MF 1045 4WD Tractor

5149 Cap Stine Rd.  
Frederick, MD 21701  
301/473-4250  
301/293-6833



DW OGG

Check Our Display At The  
Frederick County Fair  
Sept. 16 - 23  
You May be Suprised!

961 Leister's Church Rd.  
Westminster, MD 21157  
410/848-4585  
410/876-2121