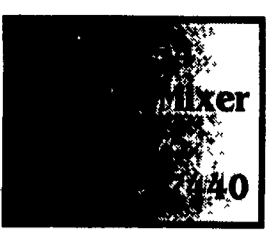
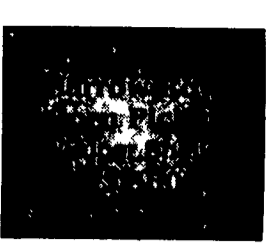


**Are You Thinking Of Replacing Your Barn Cleaner Chain Or Complete New Set-Up?**  
 Berg Hook & Eye Chain will fit into your barn  
 Also available, manure auger & pumps  
 Financially Available  
 Call or write for information  
**ROBERT GUTSHALL**  
 82 Deck Rd.  
 Womelsdorf, PA 19567  
 717-933-4816



**JD 970, 4WD, CURTIS CAB**  
**W/HEATER, POWER**  
**ANGLE SNOW PLOW, HYD.**  
**SET-UP FOR LOADER**  
**(410) 343-2062**  
 Leave Message

**Authorized Parts & Service**  
**Kubota Industrial Diesel Engines**  
 New and Used Parts  
**YANMAR Diesel Engines**  
 Mitsubishi - Satoh Compact Diesel Tractors  
 Specializing In Complete Service For Skid Loaders and Most Types Of Small Diesel Powered Equipment.

**Harvester Knives**  
 1-800-WEAVER D

**WIDE FRONT OFF 856**  
 • 1066 w/Cab & Air, TA, axle duals, ready to go  
 • 77 Ford F250 4x4 pickup w/John Blue 400 gal. sprayer w/foam marker  
 • Farmall F20  
 • Various sizes used tires & rims  
 Parts: 856, 350D W/PS, F20, 560, T6 Crawler, 460, 450D, H  
**John Thompson**  
 302/492-1186

**YINGLINGS IMPLEMENT INC.**  
**New & Used Tractor & Equipment Parts**  
*All Makes*  
**SEPTEMBER PARTS SPECIAL**  
 JD 6600 Combine  
**SEPTEMBER EQUIPMENT SPECIAL**  
 Collector AC Round Baler  
 JD 4010 DIESEL  
 JD 1010 w/LOADER  
**717-359-4848**

Take Exit 20B  
 Off Of 83, 5 1/2 MI. West To Belmont Farm.  
  
**ZETOR 8045, 4x4, 16 speed,**  
 very nice condition **\$6,500**  
 Financing & Trucking Available  
**410-833-9091**

**GD Equipment**  
 385 W Metzler Rd  
 Ephrata PA 17522  
**717-859-3533**

**NEW EQUIPMENT**  
 MF 231 Tractor, \$11,700  
 MF 232 Loader, \$3,900  
 MF 1260 Tractor, \$18,800  
 MF 1246 Loader, \$3,780  
 MF 360 Mid-Mount Mower Fits MF 300 Series GT, \$1,275

**USED EQUIPMENT**  
 Case/IHC 7130 4WD Duals & Weights CHA About 800 Hrs, \$63,800  
 MF 3525 4WD & CHA, \$22,000  
 AC 170 Wide Front Gas, \$3,850  
 OL 1855 Wide Front Diesel, \$7,895  
 Ferguson TO20 Re-sleeved Engine, \$2,395  
 Ford 8N w/Engine Redone, \$1,800  
 MF 510 CA w/13' Grain HD, \$3,250  
 WT 15' Rigid Grain Head, \$1,250  
 WT 13' Flex Grain Head, \$1,800  
 WT 704W Corn Head, Good, \$1,850  
 MF 1163 corn Head, Low Profile, \$6,450  
 MF 925 MO-CO 9' Cut, \$2,850  
 NH 270 Baler, As Is, \$295  
 NH 330 Manure Spreader, As Is, \$300  
 NH Hay Crimper, As Is, \$295  
 JD 4 Row corn Planter, As Is, \$250  
 Condor 7' 4 Blade Bush Hog, \$675  
 Woods 6' Cadet Mower, \$575  
 MF 520 22' Folding Disc, \$1,900  
 IHC 510 5x18 Plow, \$645  
 Bush Hog 170 3 Pt Ripper w/3 Stanks, \$1,200  
 IMC 6' Box Scraper, \$395  
 Bush Hog SO48 80" 3Pt Offset, \$695  
 Woods RM59 60" Cut Mower, \$495  
 Woods RM306 72" Cut Mower, \$895  
 MF 2 Row corn Head For MF 200 Chopper, \$495  
 MF 1231 Belly Mower for MF 1010, \$695  
 Continental KTR-48 Finishing Mower, \$625  
 2 Blades One 60" One 72", \$185 EA  
 60" & 72" Stone Rakes, \$495 and Up  
 48" Smucker Elevator, \$300 As Is or \$595 Repaired  
 OL 3x16 Pull Plow, \$300  
 MF 12 Hydro w/42" Mower, L&G, \$725  
 Heckinger 36" Mower, 1 Yr Old, L&G, \$695  
 IHC 56 Forage Blower, \$595  
 JD 115 Forage Box, \$500  
 Gehl Forage Box, \$500  
 MF 13' Grain Head, \$895

**NEW & USED TRACTOR & COMBINE PARTS**  
 Large Selection Save 50%  
**WE BELLS FARMS, AIR, LANE & TRUCK BANKS**

Farmall 400 & 450 Toy Pedal Tractors, \$750/ea.

**USED TRACTORS**  
 JD 4430 w/Cab, Complete Motor Overhauled, Excel. Cond. \$15,000  
 JD 300 gas, backhoe  
 JD 400 diesel backhoe  
 Case 580C backhoe  
 MF 230 Gas Tractor, \$3,500 as is OBO  
 JD 440 dozer diesel w/6-way blades, smokes, \$4,500 as is TO20 Ferguson tractor, \$1,500 as is OBO  
 JD 2355, 2400 hrs., nice \$13,500  
 New Kioti tractors, 19 hp, \$9,995  
 25 hp \$10,995  
 30 hp \$11,995  
 IH Super A tractor, motor stuck \$1,500 as is  
 IH 284 diesel, 27 hp, Reg. \$6,500  
 Sale \$5,500 as is  
 Case 1070 diesel, \$5,750 as is  
 JD 950, 27 hp, nice  
 IH Super AV, 1R, cultivator \$2,500 as is  
 IH 240, w/2 pt. hitch  
 IH- H w/loader  
 Ford 8N, excellent, redone, like new  
 Case 580 Super E TLB w/cab & extend-a-hoe  
 IH Super A, Cub, M & Super C  
 JD 820  
 JD 2440 w/loader  
 MF 135 gas & Diesel tractors  
 Case IH 685 Diesel Tractor, 880 hrs.  
 Case 1150B crawler loader \$19,500 OBO  
 JD 970 4WD, approx. 177 hrs. \$15,500

**USED EQUIPMENT**  
 Bush Hog rotary cutter, heavy duty, 3 pt 7' \$1,000  
 IH 510 18 spout single disc grain drill, nice \$1,600  
 New Gill 3pt plugger aerator  
 Special purchase: 25, 35, 40 & 60 KW PTO generators  
 Call for prices  
 8', 3pt straw incorporator  
 Brillion 5'4", 3 pt landscape seeder  
 Hardee 3pt stump burner  
**Large selection of Used Farm Equipment**

**WANTED**  
 Buy or trade in your old equipment  
 Call for prices  
**W. C. Littleton & Son Inc.**  
 Laurel, DE 19956  
**302-875-7445**  
 Mon.-Sat. 8AM-5PM

**WENGLERS, INC.**  
 251 South Race St., Myerstown, PA 17067  
**717-866-2130**  
 NIGHTS. PHONE. 717-866-7147  
 717-273-9089  
 FAX 717-866-4300  
 HOURS: Mon.-Fri. 7:30 to 5:00; Sat. 7:30 To Noon

 <b>CAT V60B Forklift, Diesel, Sideshift, 6000 Lb., Air Tires, Runs Very Good.</b> <b>\$10,500</b>	 <b>1972 Gallon 503 Series L Grader Diesel, With Scarifier, Nice Machine</b> <b>\$14,500</b>	 <b>Asphalt Paver, Gas, 8' to 12', Self Propelled, Runs Decent</b> <b>\$4,500</b>	 <b>1986 Case 680K-Extendahoe, Very Clean, Only 1800 Hrs.</b> <b>\$26,500</b>
 <b>Melroe Bobcat 943 - 1990 - Low Hours, New Tires, New Paint, New Bucket, Verv Nice</b> <b>\$18,000</b>	 <b>1986 JD 70 Excavator, 3900 hours, Good w/c, New Paint</b> <b>\$26,500</b>	 <b>JD 450B - 1973 - Good U/C</b> <b>\$10,500</b>	 <b>1980 Franklin 170 Skidder, Winch &amp; Grapple</b> <b>\$7,500</b>

**WANTED: Good Late Model Construction Equipment Need S/N And Price When You Call**  
 Lease Purchase Available On Most Machines

RUBBER TIRE LOADERS	TRUCKS/CARS	SKID LOADERS	TRAILERS	MISCELLANEOUS CONSTRUCTION	ROLLERS
JD 544A - 1975 - ROPS..... FL \$14,750	1972 Ford F800 Dump..... \$3,500	Broom Attach. off NH 555..... \$1,500	1995 5 Ton Tag-A-Long - 6.6x14..... \$1,585	(50) New & Used Hoe Buckets..... COME SEE	(2) Duomat DR70 Walk Behind - 27"..... \$2,500
(2) JD 544B - ROPS - Cab..... From FL \$21,900	1988 Honda Accord LXI - 4 Dr - 5 Spd..... \$4,950	Backhoe For Case 1835B..... \$3,800	1995 5 Ton Tag-A-Long - 6.6x16..... \$2,095	(50) Loader Buckets..... COME SEE	Rollpac 1 Ton w/Trailer - 33"..... \$2,650
Case W11B - Cab - 1988..... FL \$22,500	1985 Ford F800 Dump..... \$5,900	Bobcat 533 - 1978 - As Is..... \$3,500	1995 5 Ton Tag-A-Long - 6.6x18..... \$2,195	(50) Set Forklift Forks..... COME SEE	Eager Beaver 2 Ton - 40"..... \$3,000
JD 644B - 1978 - ROPS..... FL \$24,500	1989 Honda Accord LXI - 4 Dr - 5 Spd..... \$6,450	NH B124 Hoe For 785 NH..... \$3,900	1988 6 Ton Tag-A-Long - 8x21..... \$2,700	Cinder/Sand/Salt Spreader..... \$2,000	Bomag BW60S - Walk Behind - 24"..... \$3,500
JD 644B - ROPS - 1979..... FL \$26,500	1989 Acura Legend L - Sdn..... \$9,500	NH 555 - 1981 - As Is..... \$5,500	1988 6 Ton Tag-A-Long - 8x21..... \$2,700	Root Rake - 8' - JD 6 Way..... \$2,500	(3) Sheepsfoot - 1 & 2 Drum Tow Type..... \$2,900-\$4,500
JD 644C - ROPS - 1985..... FL \$36,500	1992 IH S1700 Diesel 42" Bucket..... \$12,500	Bobcat 642B - Gas - 1990..... \$6,500	1995 7 Ton Tag-A-Long - 8x19..... \$3,500	Stacking Rake - 8' Cat IT12..... \$2,500	Essick VR42R - 2 Ton - VIB - 42"..... \$4,900
Cat 926E - Cab - 1988..... FL \$58,000	1984 Ford F700 45" Bucket..... \$18,500	Case 1845C - 1986 - Diesel..... \$11,500	1979 12 Ton Tag-A-Long - 8x20..... \$4,900	Davey 190 Air compressor - 1982..... \$2,900	Koehring TVR30 - ART - VIB - 30"..... \$6,900
Case W14 - Cab - 1973..... Coming In	1992 Acura Legend LS Sedan, Low Miles..... \$24,500	Bobcat 943 - 1990 - Diesel..... \$18,000	1972 30 Ton Lowboy..... \$4,900	Schramm 160 Air Comp..... \$3,000	Dynapac CC10 - 41" - 1987 - VIB - ART..... \$11,500
			1994 13 Ton Tag-A-Long - 8x23..... \$6,900	JD 350 Winch w/Cable..... \$3,900	(2) Tampro RS28-84" - Art - VIB - 1981-2..... FL \$16,750
			(2) 1988 20 Tag-A-Long w/Air..... Each \$6,900	Miller 14' Offset Disc..... \$3,900	Raygo 320A - 60" DD - ART..... FL \$17,250
			1994 24 Ton Tag-A-Long w/Air - 8x25..... \$11,500	Sicard Snow Blower - V8 - Gas..... \$3,900	Raygo 320A - 80" - Padsfoot - DD..... \$17,500
			1979 60 Ton Detachable Lowboy..... \$20,000	Leebay Paver - Gas..... \$4,800	Tampo RS28-84" - ART - VIB - 1981..... \$18,500
				Stanley MB500 Hammer - 580 - 410 - 555..... \$4,800	Raygo 410A - 84" - Art - VIB - Cab..... FL \$21,800
				Euclid 10 Ton Rock Truck..... \$4,800	

**GUS FARM EQUIPMENT, INC.**  
 State Route 616  
 Seven Valleys, PA  
 17360  
 Voice 717-428-1967