

**35 TRUCKS & TRAILERS**

15' heavy duty overhead rack for 76 or same style Chevy pickup w/8' bed, \$200 610/488-1194

18 ft van body, rollup rear door, liftgate, good condition, \$800 671 Detroit very good \$1,500 Lift axle, 20" tires, \$1,000 V Mack hood 1980 \$500 38,000 Mack rears 387 ratio, nice \$1,500 (610)932-4900

1956 Dodge Power Wagon, antique quality, traditional, excellent body, power winch, snowplow, needs paint, \$4500 York Co PA 717-927-9765

1963 Studebaker truck chassis, good motor and tires, \$775 (717)944-1346

1967 Mack R model, 33,000 GVW, w/1982 9 ton Eager-Beaver trailer, both excellent shape, \$14,900 (610)584-2772

1968 International Model 1600 Dump Truck, V8, 340 Cubic Inch Gas Engine, 5Spd Transmission, 2Spd Axle, 9X20 Tires, 26,000lb. Gross, Hydraulic Brakes, Lanc. Co (717)656-7656.

1970 Chevy truck, 1 owner, cubic 7x7x10, w/power tailgate, PS, PB, new paint and interior, rebuilt engine, very good condition, \$4,695. If no answer leave message, (717)367-6891 home, (717)367-7933 work

1971 Int 2010A motor BAD, 5+2, 26,000 GVW, \$700 OBO, Lehigh County, (610)285-2611.

1972 Ford F350 grain body w/dump, V8, 4spd, 71,000 miles, good condition, \$2,450 (610)756-6049.

1972 Kenworth cabover truck tractor, 350 Cummins engine, 13 speed, \$3950 301-842-2780

1972 Mack dump truck, 18' box, 44,000 rears, 65K on rebuilt engine, \$11,500 NO Sunday calls 717-922-1135

1973 Ford LN800, 18' grain body w/roll tarp and aluminum swinging tailgate, 33,000 GVW, excellent condition (717)687-7176

'73 Fruehauf trailer, 7000 gallon, 2 compartments, go anywhere Scully, \$6000. 717-383-1401.

8500 gallon Fruehauf aluminum tank trailer, clean, no dents, \$4,500 (717)527-4442.

'73 White Road Boss super 250 Cummings, 10sp, runs well, March inspection, 27' Trailco grain trailer, \$10,500 obo. 717/872-7623 or 872-4190.

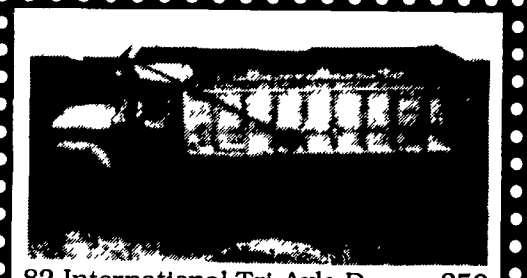
83 Ford Dual Wheel Ton Truck w/5th Wheel, Excellent Condition (717)292-3053 After 8PM.



**6x6 Oshkosh**  
4000 gal. vacuum tank, hydraulic drive pump, 285 hp Mack engine, 10 speed main transmission +3 speed aux., wide rubber.  
**717-464-5131**



**1980 Magirus (Iveco)**  
Cab & Chassis, 27,000 GVW \$2,900  
**CURRY SUPPLY CO., Curryville, PA**  
**1-800-345-2829**



**82 International Tri-Axle Dump, 350 Cat. 13-Spd, 44,000 Rears, Double Frame, AC, 19 1/2' Aluminum Body w/Liner & Roll Tarp \$23,500**  
**717/529-2512**  
No Sunday Calls

'87 Chevy Scottsdale C20, HD, 3/4 ton, 350 FI, auto, PS, PB, AM-FM cassette, 8,600 GVW, brown & tan, 47,000 miles, excellent condition, \$7,800. 717-733-2873

'89 Ford F250, 3/4 ton, 351 EFI, auto, PS, PB, AM-FM cassette, 8,600 GVW, dark blue, excellent condition, \$8,900 717-733-2873

'89 Ford XLT Lariat F250 Super Cab, 460 EFI, Auto, PS, PB, PW, PDL, Cruise, Tilt, Air, 4-10 Ratio Towing Package, 58,000 miles, 1 Owner, Excellent Condition, \$10,900 717-733-2873

(8) Michelin 11-22x5 tubeless Pilot tires, mounted, like new, \$150 each Mack camelback springs, 34000 lb new, \$150 each (215)343-0156

8'x16' heavy duty 3 axle roll back trailer w/hyd winch, \$3900 717-532-2349

'90 Dodge LE 250, 3/4 ton, 318 EFI, auto, PS, PB, PW, PDL, cruise, tilt, air, AM-FM, 7,500 GVW, 2 tone brown, \$9,600 717-733-2873

92 12' Morgan Body with Lift Gate Like New Condition (717)733-7856

'92 Chevy Tahoe S10, ext cab, V6, 5 spd, PS, PB, AM-FM cassette stereo, 29,000 one owner miles, red & silver, like new, \$8,975 717-733-2873

'92 F-350, 4x4 (not Dually) 460 V8, AT, AC, cruise, tilt, 63,000 miles w/8' Boss-V snowplow, tow package, very sharp truck 717-284-4618

'92 Ford F250, 4x4, XLT Super cab, brilliant blue, like new, only 14,000 miles, 5 speed, V8, 460, PW, PDL, PS, PB, AC, AM/FM stereo cassette, bed liner, bug shield, new tires, sport wheel cover, \$18,500 firm Call Kev 717-336-0860

Aloric 17 1/2' Dump Box, Good Condition, Air Gate w/Tarper. Best Offer; Air Tag, Air Up, Air Down. (717)899-7543.

B83 Tandem Mack Dump, Just Off Jobsite, Maxi Brakes, Power Steering, 5+4 Trans, Good Running Condition. \$2800. Days. (410)398-9004 Eves (410)398-9430.

Case backhoe 580D, extend-a-hoe, 2700 hours, cab, air, \$14,500; Ford 555 backhoe, great shape, \$9500, roll off truck, 1983 Ford 8000, single axle, w/1986 Galbraith 30,000lb hoist, \$15,000; 1985 Ford F250 4x4, V8 auto, plow, salt spreader, tool boxes, ladder racks, new paint & everything else, \$5800 610/630-6067

Cheap 74 Diamond Reo dump truck, good for farm truck or to make dump trailer, single axle, 36,000 GVW 717/484-0225

Hauling 22' reefer with 2000 lb lift gate 717-789-4820

Mack dump truck B67, runs good w/snowplow also Tonka tag-along, triaxle trailer, good condition, 20' bed, \$5,800 OBO for All. (215)654-9237

'94 Ford XL F350, single rear whl., crew cab, 7.3 diesel, auto, PS, PB w/8' knapheide flat bed w/head rack, Class III hitch, 11,000 miles w/balance of factory warranty, excellent condition, \$19,900. 717-733-2873

'95 Dodge Larmie SLT 2500, 4x4, 360 Magnum, auto, PS, PB, PW, PDL, cruise, tilt, air, 8,800 GVW, 8,000 miles w/balance of factory warranty, dark green & silver, like new, \$22,900 717-733-2873

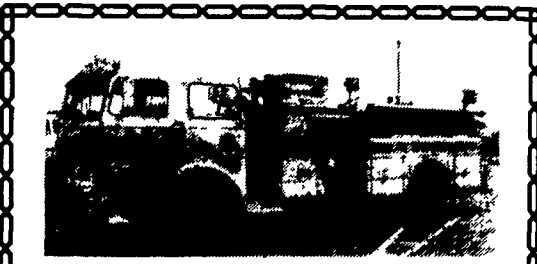
Newly Repainted Oak and Wood Stock Trailer, 12X6 Seat, Double Axle, New Tires. (717)286-7952.

Rebuilt 366 Chevy Truck Motor, \$1000 (717)762-7940.

Tag Along Trailer, Birmingham, 1980, 20-ton, 20' bed, tandem, \$3800 717/354-3105

TRUCK MACK MS200, 1986, Maryland inspected, \$6,000. 410-833-9091

Trailmobile dry bulk tank, could easily convert to grain hopper, \$2200 Lanco 717-396-9718.



**1970 Hahn Custom Pumper**  
6-71 Detroit Diesel Engine  
5-Speed Transmission  
Hale 1000 GPM Single Stage Pump  
Many Extras  
**Asking \$30,000**  
**(717) 865-0226**

**Royal Truck & Equipment, Inc.**

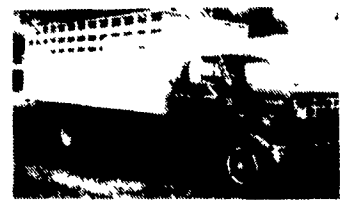
6910 Route 309 Coopersburg, PA 18036  
**(610) 282-4090** Just Off I-78, Between  
**(800) 283-4090** Allentown & Quakertown  
Financing Pre-Approved



1981 Inter/1854 10' Dump w/crane 34000 GVW DT466 5 sp PS AB PTO



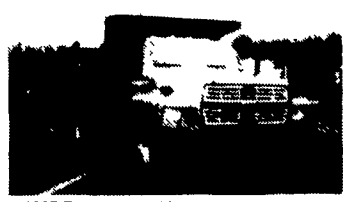
74 Chevy C65 Stake/Lift, 23,000 GVW 8 1L Dial, 5 Spd., PB Liftgate, Great Truck



1977 GMC 6000, Grain/Cattle 24000 GVW, Alum Body, 366 CID Gas 5/2 PTO, Alum Belly Box AM/FM



Great Lumber Dump 89 International S1955 18' Dump, 29000 GVW DT466, 7 Spd Air Brakes



1987 Ford F700 10' Dumps, 7 8 Turbo Dsl, 10 Spd, 30,000 GVW, New Hoist On Dump, Several To Choose From But Going Fast - Call Now - Other Dumps, Under CDL Ready For Work NOW!



1986 FLC120T 400 Cat. Jake, 15 Spd., Air Ride, Alum Wheels, New Tires Many Extras

**TWO ACRES OF ALL TYPES USED TRUCKS. "IF WE DON'T HAVE IT, WE'LL GET IT"**

**WASTE OIL**  
Model 200  
Ductible Furnace  
**BOILERS & FURNACES**  
by Shenandoah  
Since 1924  
For Information Contact:  
**Necco Central Heat**  
393 W. Lexington Rd.  
Lititz, PA 17543  
717-626-1479  
Sales, Installation and Service

**LEFEVER BROS. CHEVROLET CHEVY TRUCKS GEO.**  
**YOUR DIRECT LINE TO GENUINE GM PARTS**  
**(800) 533-3837**  
When you call the number listed above, you'll reach our wholesale parts specialists, who can help you keep your GM repair work moving quickly.  
Ask about:  
• Specializing in GM Medium Duty Trucks, Current and Obsolete.  
• \$500,000 Parts Inventory.  
• Parts Locator for Those Hard to Find Items.  
• We Ship Anywhere, Local Delivery Available.  
• Experienced, Knowledgeable Personnel.  
Mon., Tues., Thurs., Fri. 7:30 a.m.-4:30 p.m.  
Weds. 7:30 a.m.-8:30 p.m.  
Major Credit Cards Accepted  
**(717) 432-9697**  
Quality Dealer Since 1921  
406 U.S. Rt. 15, Dillsburg, PA 17019  
**GM Goodwrench Service**  
**Kodiak Chevy Trucks CAT DIESEL POWER**

**ARMY TRUCK PARTS**  
**CHAMBERSBURG, PA**  
**COMPLETE TRUCK INVENTORY**  
**COMPLETE PARTS INVENTORY**  
**THE NATION'S LARGEST ARMY TRUCK AND PARTS DEALER**  
Request Our Free Army Truck Parts Catalog  
**MEMPHIS EQUIPMENT**  
821 Lincoln Way West  
P.O. Box M  
Chambersburg, PA 17201  
**717/263-4194 FAX 717/263-4555**  
ART WELLER, GEN. MGR.  
MARK SIPES, PARTS MGR.  
MasterCard VISA