

**Public Auction Register**

Closing Date Monday 5:00 P.M.  
of each week's publication

**PUBLIC AUCTION**

**Blacksmith & Woodworking Tools  
Buggy Wheels, Guns, Air Tools  
Petter Diesel 20 HP &  
15 HP Air Compressor**

**THURS., SEPT. 28  
9 AM Auction Time**

Location: From Ephrata Rt. 322 East to traffic light at Hinkle-town. Turn left onto Martindale Rd. to Village of Martindale. Turn left onto Gristmill Rd. to S turn bear left onto Hurst Rd. to Slate Rd. Turn left to property on right, Eph. Twp., Lanc. Co. Watch for Auction Signs.

**Terms by  
MRS. DAVID SHIRK  
(Mary Shirk)  
Ivan Shirk - 610-683-8687 or  
Ivan Burkholder - 717-445-4090**

Auction conducted by:  
Randal V. Kline, Lloyd Kreider,  
Roy Good, Jr., Auctioneers AU2116L  
717-445-4309



**PUBLIC SALE  
OF  
CARS, TRUCKS, AND  
OFFICE EQUIPMENT**

**Thurs. Eve. Sept. 14, 1995  
6:30 P.M.**

Sale to be held at Union National Mount Joy Bank, Administrative Services Center, 25 N. Barbara St. Mount Joy, Pa.

Offering Used Office Equipment, Furnishings, Desks, Storage Units, Pictures, Chairs, Etc.

**VEHICLES 7:00 P.M.**

1993 Buick LeSabre Limited, Full Equipment, 67,724 Miles, Dark Green With Tan Leather Interior.

1992 Buick Regal Grand Sport Sedan, Full Equipment, 51,904 Miles, White With Maroon Leather Interior.

1992 Pontiac Grand Prix LE Sedan, 50,331 Miles, White With Maroon Leather Interior.

1993 Ford F-150 XL Pick-Up Truck, 4.9 L, 6 Cyl., Bed Liner, 58,904 Miles, White With Red Interior.

1991 Ford Ranger XLT 4x4 Pick-Up Truck, 6 Cyl., 64,550 Miles, White.

1986 Ford Conversion Van, Nice Equipment, 92,090 Miles, Brown And Beige.

NOTE: All Vehicles have been serviced and inspected. Condition: good to excellent. All vehicles are offered for sale as is, where is, with no warranty, either expressed or implied. Payment in full and removal of vehicles no later than Friday, September 15, 1995, 6:00 P.M. The bank reserves the right to reject any and all bids.

For information call (717) 653-1441 or 492-2247. "Abe" Shaffner's Auction Service Inc. 829-L (717) 653-5689 Mark Diffenderfer 367-8000

FRI. SEPT. 15 - 10AM Dairy equipment, farm machinery. In Mifflin Co. 1/4 mile N. of Allensville, Pa. turn E. off Rt. 655, onto School House Rd., travel 1 mile to farm lane. Marvin & Jayne Kanagy. Mark Glic, auct.

FRI. SEPT. 15 - 11AM Holstein Dispersal Brown Swiss & Jersey. Mark Gieron New Oxford, Pa. Sale Mgr. NH Cattle Co.

FRI. SEPT. 15 - 7PM Horse Sale. New Holland Sales Stables, Inc. 101 W. Fulton St., New Holland, Pa.

FRI. SEPT. 15 - 7PM Feeder Sale Rt. 5223 Mi. East of Middleburg, PA., 5 Mi. West of Selinsgrove, PA. Middleburg Livestock Auc-

tion Sales, Inc.

FRI. SEPT. 15 - 7PM Real Estate Auction Union Co. Just across from the Beautiful Penns Valley Creek and only a short distance from state game lands. Kenneth E. Hassinger, Neil A. Courtney, aucts.

FRI. SEPT. 15 - 7PM Tool Auction. Pemberton Township High School, Arney-smount Rd., Pemberton, NJ Auction Held for Public School's of Pemberton Township. Allens Auction Service.

FRI. SEPT. 15 - 7:15PM Dairy Sale. Hagerstown, MD Four States Livestock Sales.

FRI. SEPT. 15 - 7:30PM 60 head of dairy cattle.

Located 7 miles E. of Frederick, Md. on Rt. 26, S. on Chestnut Grove Rd. to 1st farm on left. Grayson & Dana Blank. Robert C. Mulendore, auct.

SAT. SEPT. 16 - All Day Auction to Benefit The Clinic For Special Children at Leola Produce Auction Barn By Paul Horst Auctioneer and Other Local Volunteer Auctioneers Willing to Lend A Helping Hand.

SAT. SEPT. 16 - 8AM Farm Toy Collection Auction, at Harry's Auction, 11 Graybill Rd., Leola, Pa. Lanc. Co. 8 miles E. of Lanc, just off Rt. 23 in the village of Bareville, Pa. Turnpike to Exit 22, follow Rt. 23 W. 12 miles to Bareville. Richard Harry 717-656-2436 or Randy Stoltzfus 717-656-8919.

SAT. SEPT. 16 - 8AM Bi-Annual Whitley Co. Antique Tractor Auction. Whitley County 4-H Fairgrounds, Columbia City, IN Donald R. King Auct.

SAT. SEPT. 16 - 8:30AM RD #1, North Hill Dr., Winfield, PA., Snyder Co., 36.75 Acres w/2 Story House, Frame Barn & Minor Outbuildings, Household, Collectibles, Butchering, Pony Items, Tractors & Farm Equip. Real Estate 12NOON. Jay Mohr Owner, Guardian Shirley M. Kratzer. Dennis Hassinger & Ken Smith Aucts.

SAT. SEPT. 16 - 8:30AM Tractors, Motor Home, Horse Drawn Equip., Trucks, Lawn & Garden Equip., Toys, Parts. Location: 1 Mi. North of Royal Center, IN on SR35. Owner: Berkshire Implement. Dennis Polk & Assoc.

**Annual Fall  
Consignment  
Auction**

**Quilts, Building Material & Buggies  
Sat., Sept. 23, 1995**

**9:00 AM**

Gordonville Fire Hall, Gordonville Pa. 600 New & Used Quilts and Quilt Tops Quilts Will be Consigned at Gordonville Book Store 275 Old Leacock Rd., Gordonville Mon. thru Sat. 7:00 AM to 4:00 PM Aug. 28 to Sept 13. Building Material & Buggies Will be Consigned at the Fire Hall Sept. 18 thru 22. For More Consignment Information Call 717-768-3869.

Terms By

**Gordonville Sale Committee  
Ron Funk & Local Auctioneers**

**5th Annual  
Benefit  
Auction**

**For Open Door Youth Center  
Thur., Sept. 14, 1995  
Sale at 5:00 P.M.**

Auction will be held at Bareville Fire Hall along Rt. 23 between New Holland & Leola at 211 East Main St., Leola, Lanc. Co., Pa.

**Specialty Items**

Airplane ride, parachute jump, trip to New York w/Conestoga tours, weekend for 6 at Perry Co. cabin, weekend at Hemlock Haven Mt. Cabin, 1 nite lodging at Willow Valley, 1 day at bay w/boat for 6 to 8 people, 2 prime Flyer hockey tickets, 4 Hershey Bears hockey tickets, Golf Lesson, 4 Villanova basketball tickets, rug braiding lesson, 2 day use of 7 passenger mini van, 4 tickets for Golf Course at Village Greens miniature golf, tickets to - Amish World, Hazel's people & who are the Amish at people place, servant for a day, tennis racquet restrung, Betty Lantz mustard.

**Certificates**

Leola Family Restaurant, Shady Maple Smorgasbord, Family Time, Reflections, Diener's Country Restaurant, Leola Canton Chinese, Yoder's Steak House, Lapp's Family Restaurant, Ruby Tuesday, People's, Pronto Pizza, 2 Cousins, Brownstown Restaurant, Sunday brunch for 2 at Eden Resort, International Tea Room, Tri Town IGA, Martin's tune up, Musselman's Lumber, front end alignment at M.S. Horst, Ferguson & Hassler, Dutch School Natural Foods, 3 games Dutch Bowl, hair cuts-Stellar, Performance & Heads-Up Hair & Nail Studio.

**Home Cooked Meals**

Gourmet Christmas dinner for 8, roast beef dinner for 6, capon dinner for 4 & others, ice cream party for 10.

**Household & Misc. Items**

Thomasville sectional sofa, Brandon lamp, Hatteras hammock, large doille, wall hanging, 30 gal Rubbermaid container, wooden buckets, collectibles, Winross & Ertl trucks, fruit baskets, plants, flowers, shrubbery, 2 Power Ranger Action pals, remote control car, tools & lawn supplies, drill press, 40 pc. socket set, cordless drill set, 25 pc. Brad Point bit set, 12" hardwood screw clamps, 4 pc. adjustable wrench set, utility shears set, heavy duty ice scraper, 50' garden hose, Rubbermaid Easy Rider lawn cart, lawn mower, shovels, hoes, rake, 600' trimmer line, 24" wide broom Buddy utility pan & broom, spring clamps, leather work gloves, folding sportsman knife, tire pressure gauge, stepladder, many other items not mentioned. Lots of homemade baked goods. Food stand will be open-come & enjoy food, fun & fellowship.

Aucts - Robert E. & Jeffrey R. Martin (717) 656-7770

AU000580L  
Randall L. Ranck  
Michael L. Martin App.



Outstanding

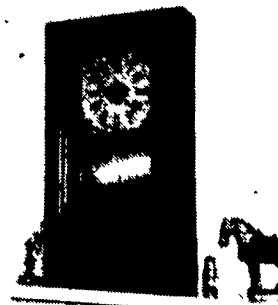
**Estate Auction**

Selling for the Estate of the late

**Margaret (Mrs. George D.) Seeds Musser**  
of Mercersburg, Pennsylvania

**Sat. Sept. 16, 1995 9:00 A.M.**

**COCHRAN AUCTION COMPLEX BOONSBORO • MARYLAND**



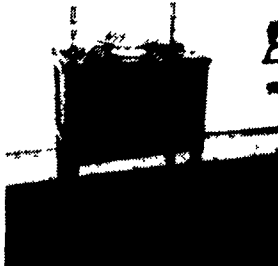
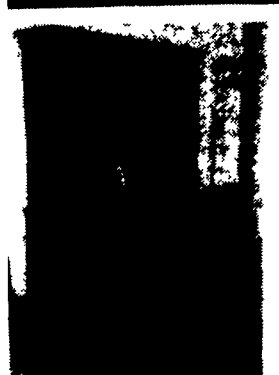
**This collection includes many Antique  
Oriental Rugs including:**

Oushak, Chi Chi, Kazak, Senna, Karabagh, Yomud, Asmalyk, Verneh, Kuba, Herez, Serebend, ect. - Room Size, Prayers, Runners and Mats • Group of Stoneware including a Crock with a Pig • (3 Pair) Andirions, both antique and reproduction • Iron Lawn Furniture • Cherry Glass Door Stepback Cupboard • Cherry Sheraton Chest • Good Empire Chests • Carved Leg Drop-Leaf and Work Tables • (6) Dining Chairs, c. 1830s • Early Harvest Table, with drawer • Brass Lanterns • (3) Mantel Clocks • Mahogany Candlestand • Windsor Chairs • Rope Beds • Steinway Piano, with short keyboard (#12D26) • Empire Mirrors • Cherry Single Drawer Stand • Assorted Candlesticks • Pewter • Quilts • Collection of Fans • Jelly Cupboard • Pair of Fancy Chairs • And Lots of Good Reproduction Furniture Glass, China and General Household Goods.

**AUCTION COMPANY NOTE:** Please plan to attend this outstanding auction for many of these items were collected by Mrs. Musser's late husband, a nationally recognized and respected appraiser of antiques.

The Oriental rugs are exceptional. Rugs must be paid in cash or cashier's check. NO rugs removed until paid for in full. Rugs sold promptly at noon

**PREVIEW:** Friday Evening, September 15, 1995 between the hours of 5:00 P.M. and 8:00 P.M.



Located approximately 70 miles west of the Baltimore/Washington Metro Area, the auction will be held at the 26 acre COCHRAN AUCTION COMPLEX conveniently located just 4 miles south of exit 35 off Interstate 70 on Maryland Route 66 at Boonsboro, Maryland.

**TERMS:** Include Cash or Approved Check on Day of Sale with Positive Identification Required for Registration. Food will be available on site.

Please Clip This Ad For It Will Appear Only Once

**ABSOLUTELY NO BUYER'S PREMIUM  
SALE CONDUCTED BY:**

**J.G. Cochran**

AUCTIONEERS & APPRAISERS LTD.

Professional Auctioneers & Appraisers Since 1872

Main Office: 7704 Mapleville Rd., P.O. Box 222, Boonsboro, MD 21713-0222 (301) 739-0538 • TOLL FREE (MD) 1-800-310-2844 • FAX (301) 432-2844