

Estimated Daily Livestock Slaughter

Under Federal Inspection
September 6, 1995

	CATTLE	CALVES	HOGS	SHEEP
WEDNESDAY (EST)	131,000	6,000	353,000	17,000
WEEK AGO (EST)	128,000	5,000	341,000	17,000
YEAR AGO (EST)	123,000	5,000	354,000	20,000
WEEK TO DATE (EST)	262,000	12,000	701,000	33,000
SAME PD LT WK (EST)	379,000	17,000	1,011,000	47,000
SAME PD LT YR (ACT)	247,000	10,000	697,000	40,000

PREVIOUS DAY ESTIMATED STEER AND HEIFER...106,000; COW AND BULL 23,000.

Leola Produce Auction

Leola, PA
Sept. 5, 1995
Report Supplied by Auction

APPLES: GALA 6.50-8.00, PAULA RED. 3.75-5.50, RAMBO 3.25-4.00, ALL 1/2 BU.
BEANS: LIMA 14.50-19.50 1 1/9BU.; GREEN 12.50-20.50, YELLOW 14.00-18.50, BOTH 1 BU.
BEETS: RED 6.75-9.50 LOOSE 1 1/9 BU. BUNCH 6.25-8.75 BUNCH 15-COUNT.
BLACKBERRIES: 16.50-24.50 12 PINT FLAT.
BROCCOLI: 3.00-6.75 12-14 CT.
CABBAGE: GREEN 6.00-9.50 CRATE; .55-.70 PER HEAD.
CANTALOPES: SM. TO MED. 40-80, LGE. TO EX. LGE. .85-1.65 EA.
CAULIFLOWER: .85-1.40 EA.
CUCUMBERS: 12.00-15.00 #1 1 1/9 BU., #2 7.00-11.50 1 1/9 BU.
EGGPLANT: #1 7.25-9.75 1 1/9BU., #2 3.50-7.00 1 1/9 BU.
GOURDS: MIXED 4.00-6.50 HALF BUSHEL. JACK BE LITTLES 7.00-9.00 1/2 BU. GOOSEGOARDS OR SNAKE-GOURDS: .95-1.50 EACH.
HONEYLOPES AND HONEYDEW: SM. TO MED. .35-.85, LGE. TO EX. LGE. 1.00-1.75 EA.
INDIAN CORN: .85-1.35 BUNCH.
INDIAN FINGERS AND STRAWBERRY CORN: .45-.75 BUNCH.
MUMS: 1.45-2.00 POT.
NECTARINES: 8.00-11.50 1/2 BU.
PEPPERS: GREEN SM. TO MED. 3.50-7.25 1 1/9 BU., LGE. TO EX. LGE. 7.50-9.50; RED SM. TO MED. 4.25-6.50, LGE. TO EX. LGE. 7.00-13.50, BOTH 1 1/9 BU.; SUNTAN SM. TO MED. 3.25-4.75 1 1/9 BU., LGE. TO EX. LGE. 5.00-6.50; HOT 4.75-6.50 1/2 BU.
PICKLES: SM. TO MED. 12.00-15.00

1/2 BU., LGE. TO EX. LGE. 9.50-13.00 1/2 BU.
PEACHES: YELLOW 4.25-9.00 1/2 BU.
PEARS: BARTLETT 4.20-7.00 1/2 BU.
PLUMS: PRUNE 9.50-12.50 1/2 BU.; 7.25-9.50 8-QT FLAT.
POTATOES: 3.75-6.75 50 LBS RED AND WHITE #1.
PUMPKINS: NECK .65-1.10 SM TO M: 1.20-1.60 LRGE TO EXTRA LARGE. BABY PAMS OR OZ .25-.45 EACH.
FACE: .75-1.25 SM TO MEDIUM; 1.30-1.70 LARGE TO EXTRA LARGE. PRIZE WINNERS SM TO MEDIUM AND LARGE TO EXTRA LARGE. ATLANTIC GIANT EXTRA LARGE. HUBBARD SQUASH: 1.25-2.00 SM TO MEDIUM; 2.00-2.75 LARGE TO EXTRA LARGE.
RED RASPBERRIES: 11.00-18.00 12-PT FLAT.
SQUASH: YELLOW STRAIGHT-NECK 6.75-11.00 1/2 BU.; SMALL PAT-TYPAN 9.50-13.00 10 LBS; CORN 4.25-8.00 1 1/9 BU.
SWEET CORN: WHITE 1.85-3.25 DOZ., YELLOW AND BI-COLOR 1.75-3.00 DOZ.
TOMATOES: SM. TO MED. 4.25-6.50 #1 25LBS., LGE. TO EX. LGE. 6.00-11.00 #1 25 LBS.; CHERRY 7.25-9.50 12 PINT FLAT; PLUM 3.50-6.50 25 LBS.; YELLOW 5.75-9.50 25 LBS.
TURNIPS: 1.75-2.50 25 LB. POLYBAG.
WATERMELON: SEEDLESS SM. TO MED. 1.10-1.90, LGE. TO EX LGE. 2.00-3.10 EA.; SANGRIA SM. TO MED. 1.00-2.00, LG. TO EX. LGE. 2.25-3.65; CRIMSON SWEET SM. TO MED. .60-.85, LGE. TO EX. LGE. .90-2.00.
ZUCCHINI: GREEN SM. TO MED. 7.25-10.50 1/2 BU., LGE. TO EX LGE. 5.00-7.25 1/2 BU.
SALE DAYS MONDAY THROUGH FRIDAY, 9 A.M.

New Holland Horses

New Holland Sales Stables
New Holland, PA
Monday, September 4, 1995
Report Supplied By Auction

314 HEAD. MARKET STEADY.
WORK HORSES 890.00-1275.00.
DRIVING HORSES 510.00-950.00.
BETTER RIDING HORSES 1050.00-1450.00.
RIDING HORSES 485.00-850.00.
REGISTERED RIDING 760.00-2250.00, 1 AT 4000.00.
KILLERS, 8 HEAD 910.00-1100.00.
HEAVYWEIGHTS 730.00-865.00;
LIGHTWEIGHTS 490.00-635.00.
PONIES 100.00-310.00.
LARGE PONIES 400.00-510.00.
COLTS 140.00-440.00.

Pennsylvania Livestock

WAYNESBURG, PA
SEPTEMBER 7, 1995
CATTLE: SLAUGHTER COWS: Utility and commercial 35.00-41.50; cutter and boning utility 33.00-36.00; canner and low cutter 30.00-36.50; shells 30.00 and down.
BULLS: Yield grade 1 1500-2000lb, 42.50-51.50; yield grade 2 1000-1400lb, 40.00-53.50.
FEEDER STEERS: M&L 1 300-500lb, 50.00-74.50; 250-280lb, 60.00-75.00; M 600-900lb, 50.00-66.00. HEIFERS: M1&L 1 300-500lb, 50.00-61.00; L 1 400-650lb, 48.00-60.00. BULLS: M&L1 300-620lb, 48.00-60.00.
CALVES: VEAL: Prime 64.00-80.00; choice 55.00-65.00; good 44.00-54.00.
FARM CALVES: #1 Holstein bulls 90-120lb few, 40.00-85.00; #2 Holstein bulls 80-100lb few, 48.00-60.00; beef x bull & hfrs/hd 35.00-90.00.
HOGS: BARROWS & GILTS: #1-2 210-255lb, 44.50-50.00; #2-3 255-280lb, 35.00-42.00. SOWS: #1-3 300-500lb, 24.00-29.50. FEEDER PIGS: 1-3 15-20lb; 1-3 25-35lb, 10.00-24.00/hd.
LAMBS: High choice 40-75lb, 65.00-85.00; choice 90-105lb, 68.00-78.50. FEEDER LAMBS: Good 55.00-77.00; SHEEP: 16.00-30.00.
GOATS: Large 50-80.00/hd; medium 30.00-48.00/hd; small 10.00-34.00/hd.
HORSES: Horses 35.00-64.00; ponies 28.00-60.00.

Indiana Farmers

HOMER CITY, PA
SEPTEMBER 7, 1995
CATTLE: 192: STEERS: Steady. HEIFERS: Steady. COWS: Steady.
STEERS: Choice 1100/1475 lbs, 58.00-63.75; select 49.00-52.25.
HOLSTEINS: Standard 40.050-48.25; ind select 54.25-58.75.
HEIFERS: Choice 900 lbs; 57.00-63.00; select 48.50-55.00; standard 35.00-44.75.
COWS: Breaking utility and commercial 35.00-40.75; cutter and boning utility 31.00-34.50; canner and low cutter 27.00-30.75; shells down to 16.00.
BULLS: Yield grade 1 1800 lbs, one at 45.00.
FEEDER CATTLE: HEIFERS: M1 300/575, 46.00-50.00, M&L2 300/800 lbs, 36.00-45.00. BULLS: M&L1 400/800 lbs, 40.00-47.00, 800/850 lbs, 32.50-36.00.
CALVES: 85: VEALERS: 12.00-15.00 higher, choice 67.00-85.00; good 200/280 lbs, 30.00-49.00, standard and good 30.00-44.00; utility 12.00-21.00.
FARM CALVES: No 1 Holstein bulls 90/120 lbs, 65.00-102.00; No 2 Holstein bulls 85/110 lbs, 41.00-63.00; Beef cross bulls and Heifers 80/130 lbs, 43.00-78.00.
HOGS: 40: BARROWS & GILTS: steady; 1-3 215/275 lbs, 26.75-50.00; 2-3 260 lbs, one lot at 44.50; 1-3 125/145 lbs, 25.00-36.00.
SOWS: Few 1-3 400/600 lbs, 30.25-35.25.
BOARS: 600 lbs, one at 24.00.
FEEDER PIGS: 3: 1-3 20 lbs, 13.00/head.
SHEEP: 8: few choice 70/90 lbs; good and choice 45/50 lbs. FEEDER LAMBS: 77.00-87.00.
GOATS: 2: Large 66.00.

Greencastle Livestock

GREENCASTLE, PA
SEPTEMBER 7, 1995
CATTLE: 214. COWS: Mostly steady to 1.00 higher.
STEERS: Few standard 40.00-44.00.
HOLSTEINS: Two choice 1290lb, 56.75-58.00; select ind at 46.50.
COWS: Breaking utility and commercial 36.00-39.75, couple at 40.75; cutter and boning utility 33.75-37.00, ind 41.25; canner and low cutter 30.00-34.00, shells down to 20.00.
BULLS: Yield grade 1 few 1185-1520

lb, 41.75-42.75; yield grade 1080-1900 lb, coup 40.00-40.75.
FEEDER CATTLE: HEIFERS: Few 1-2 200-275lb, 73.00-96.00.
CALVES: 436: Standard and good 75-105 lbs, 35.00-40.00; utility 55-85 lbs, 25.00-35.00, few down to 20.00.
FARM CALVES: No 1 Holstein bulls 90-130 lbs, 60.00-1.10, few to 1.15; No 2 Holstein bulls 80-120 lbs, 40.00-55.00, few to 60.00; No. 1 Holstein Heifers 85-115 lbs, 1.05-1.75; No 2 Holstein Heifers 70-80 lbs, 48.00-75.00; Beef cross bulls and Heifers 70-100 lbs, 40.00-82.50.
HOGS: 5.
SOWS: Ind 1-3, 400 lbs, 33.00; few 23.00-26.25.
FEEDER PIGS: 21.
SHEEP: 1, ind choice 120 lbs at 61.00.
GOATS: 1, one at small kids 13.00.

Jersey Shore Livestock Market, Inc.

Auction every Thursday at 4:00 p.m.
Jersey Shore, Pa.
Report supplied by Auction
Thursday, Sept. 7, 1995
RETURN TO FARM CALF 60.00-150.00.
GOOD VEAL: 40.00-59.00.
COMMON VEAL: 15.00-39.00.
CHOICE STEERS: 60.00-63.75.
SELECT STEERS: 55.00-59.00.
COMMERCIAL COWS: 36.00-42.00.
CANNERS-CUTTERS: 33.00-38.00.
SHELLS: 27.00-32.00.
CHOICE HEIFERS: 59.00-62.00.
SELECT HEIFERS: 55.00-58.00.
COMMON FEEDERS: 25.00-55.00.
BULLS: 42.00-48.00.
SOWS: 31.00-32.00.



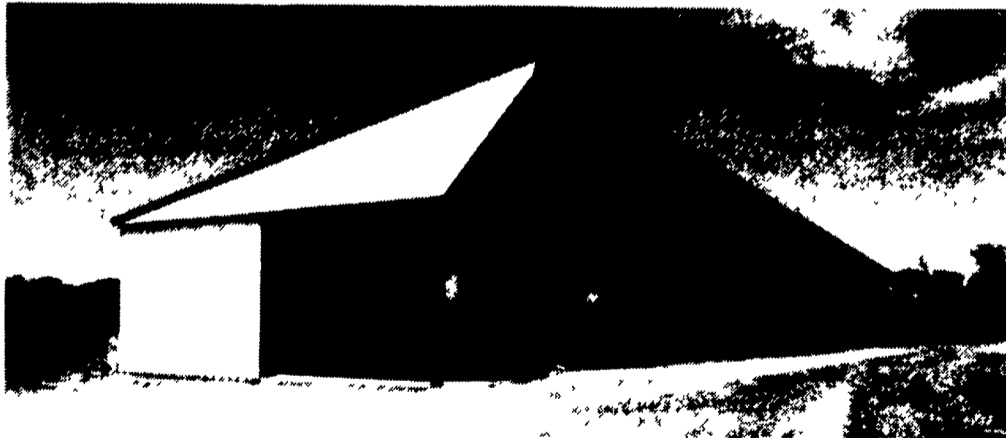
PRECISE CONCRETE WALLS, INC.

For All Your Concrete Walls And Construction Needs

Agriculture - Residential - Commercial

- Buildings • Basement • Floors
- Retaining Walls • Footer
- SCS Approved Manure Storage Pits
- All Types Of Flat Work

Manure Storage



Virginia Style Heifer Barn With 8' Deep, 180' Long, 12' Wide Slatted SCS Approved Concrete Manure Pit

Invest In Concrete, Quality Work That Will Last A Lifetime

CALL FOR **FREE** ESTIMATES AND SEE HOW AFFORDABLE CONCRETE WALLS CAN BE

CONTACT **ROY SENSENIG** 717-355-0726

PRECISE CONCRETE WALLS, INC.

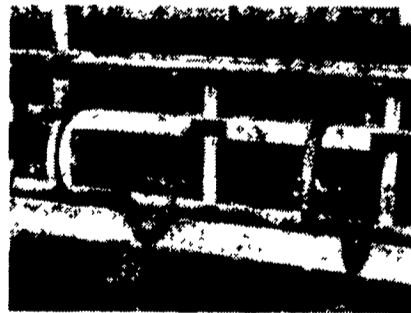
601 Overly Grove Road, New Holland, PA 17557



LOOP STALLS

All Loop Stalls Are Coated With Baked On Top Grade Polyester TGIC Powder Coating After Fabrication

- Super Tough Finish
- Protection From Rust & Corrosion
- Superior Electrical Insulation
- Chip Resistant
- Resists Acid & Chemicals
- Smoother Finish Stays Cleaner



FREEDOM STALLS

FEATURING

- Greater cow comfort in shorter stall beds
- Provides additional side head room in the lounge process



CONVENTIONAL STALLS

Loop Stalls Are Constructed Of:

- 2 3/8" Outside Diameter High Yield Steel Tubing With A 12 Gal. (.108) Wall
- Spray Arc Transfer Method Used On Welds



LAPP'S BARN EQUIPMENT
5935 OLD PHILADELPHIA PIKE, GAP, PA 17627
PHONE: 717-442-8134
— Radio Dispatched Trucks —