

**FIVE MODELS, 50,000 REASONS.
BEFORE YOU BUY YOUR NEXT NEW TRACTOR,
ASK AN OWNER.**

There are more than 50,000 Case IH MAGNUM™ tractors working fields and farms around the world. And with over 65 million hours of rugged fieldwork behind them, they've proven what a difference durability, reliability and performance can make. You'll feel the difference in the 7200 Series MAGNUM tractors, ranging from 130 to 215 PTO hp.



**CASE IH 145
ROLL OVER PLOW**

• Auto Reset • 3 Bottoms

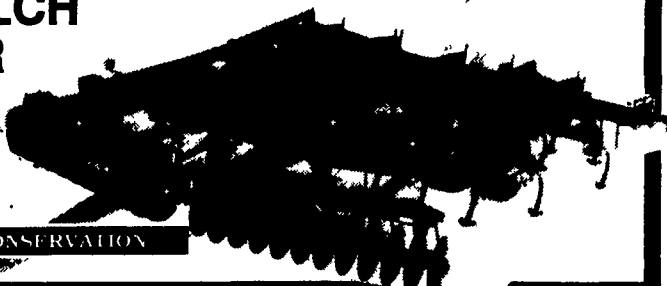
**Tired Of Uneven Fields
CASE IH 3900
DISC
HARROW**

It **LEVELS LEVELS LEVELS**

it combines your secondary tillage needs into a single pass that handles high residue fields and leaves residue on top to prevent erosion.

**CASE IH 4200
COMBO MULCH
FINISHER**

Featuring:
Rock Flex Bearing Hangers
Earth Metal Blades
Big Trash Clearance



A NEW TOOL FOR CONSERVATION

**CASE SKID STEER
In Stock: 1838 & 1840**



**Case IH 5300 Grain Drill
Featuring New Heavy-Duty Disc Openers**

The Best Soybean & Grain Drill On The Market

- 24x6 Double Disc Openers
- Press Wheel • Grain Drill Tires
- Acre Meter • Soybean Package
- Grain View Cups
- Grass Seed Attachment

ATTENTION FARMERS: If Parts Are Needed After Hours to Keep You Going, Call Lynn At Home — 717-653-8168

MESSICK FARM EQUIPMENT, INC.

Rheems Exit-Rt. 283, Elizabethtown, PA. 17022
717-367-1319, 717-653-8867

© 1995 CASE CORPORATION
Case IH is a registered trademark of Case Corporation



Best Buys in Used Equipment

- TRACTORS**
- Ford 6600 - Good Cond!
 - Kubota L4300 GSTC w/Cab, 80 Hrs.
 - Cub Cadet 2182 w/Blower & Snow Blade
 - IH 674 w/2200 Loader, 1900 Hrs.
 - JD 880 w/80" Mower - 273 Hrs., Like New
 - IH 766 w/ROPS Wide Front
 - 12 HP Gravelly w/Equipment
 - Kubota L186 w/L80 Woods Mower
 - Ford 1820 4WD, Hydrostatic, 60" Mower
 - Kubota B1780 4x4 w/Loader
 - Kubota B6200 w/48" Mower
 - Kubota B-6000, 4WD w/81 48" Mower
 - 420 Stainer 4WD w/80" Mower
 - Case 1894 Regen, Ex. Cond.
 - Case IH 7210, 4x4, 369 Hrs., Like New
- MAY & FORAGE**
- 2 - Hay Rack Wagons
 - Gravity Box w/Gear
 - NH 816 Forage Box Tandem Axle Gear
 - NH 402 Haybine, New Rolls
 - NH 900 Harvester
 - JD 327 Baler w/40 Ejector - Excellent Condition
 - NH 484 Round Baler
 - Lely Wheel Rate
 - NH 277 Baler w/Thrower
 - NH 40 Blower
 - NH 280 Hyd. Drive Rake, Ex. Cond.
 - NH 286 Rake, Good Cond.
 - JD Forage Box Wagon
 - Mowers 500 TSS Forage Box, Feeder Wagon
 - NH 718 Forage Harvester
 - NH 411 Discbine, 1000 RPM, Excellent

- NH 327 - 2 Row N Corn Picker
 - Heaton Model 7900 S.P. Harvester, 4 Row Crop Head & Pickup Attachment
 - Heaton 8200 - Self-Propelled Haybine w/12' Head
 - Heaton 6650 S.P. Haybine, Hydro, Cab, AC, 14 Ft. Header
 - NH 919 14 Ft. Direct Cut Header
 - NH 1895 S.P. Harvester 4x4 with 3 Row Corn Head & 3 Row Snapper Head
 - NH 575 Baler w/72 Thrower - Like New!
 - NH 640 Round Baler Auto Wrap
- SKID LOADERS**
- NH 1553 Skid Steer w/Bucket
 - NH 1555 Skid Loader
 - Case 1835B Gas w/Bucket
- PLANTING & TILLAGE**
- IH 480 3 Bottom Auto Reset Plow
 - NH 900 Planter, 4 Row w/Fert. & Insec.icide, Used 218 Acres, Like New!
 - Brillion 12' Cultipacker
 - NH 475 Disc Harrow
 - Brillion Field Cultivator
 - Lilliston 9088 No-Till Drill, Excellent!
 - Case IH 498 Disc Harrow, Rockflex, 19 Ft.
 - NH 88 2 Row Planter
 - Brillion 18' Packer
- SPREADERS**
- NH 791 Spreader, Top Beater/Tail Gate
 - NH 512 Spreader w/Top Beater
 - NH 327 Spreader w/Sturry Pan
- MISC.**
- MC 3 Ft. Flail Mower
 - New Curtis Cab Enclosure For John Deere 79 Series
 - NH 398 Grinder Mixer w/Scales
 - NH 40 Silage Blower
 - Paper 670 Grinder/Mixer
 - Ford 3 Ft Post Hole Digger 9" Auger
 - NH 383 Grinder/Mixer - Like New
 - Large Bale Grapple Hook

MESSICK FARM EQUIPMENT, INC.

Rheems Exit-Rt. 283, Elizabethtown, PA 17022
717-367-1319, 717-653-8867

© 1995 CASE CORPORATION



HAY PRODUCTS



- 4.9%
- 5.9%
- 6.9%
- 7.9%

- For 24 Months
- For 36 Months
- For 48 Months
- For 60 Months



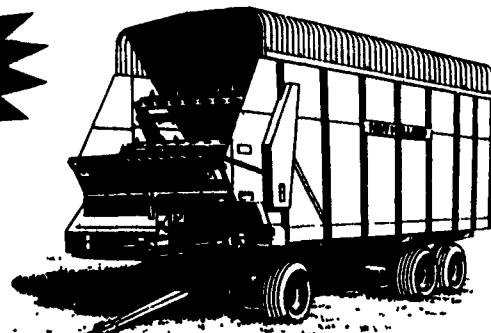
NEW HOLLAND

FORD NEW HOLLAND CREDIT

Makes it easy to own the best

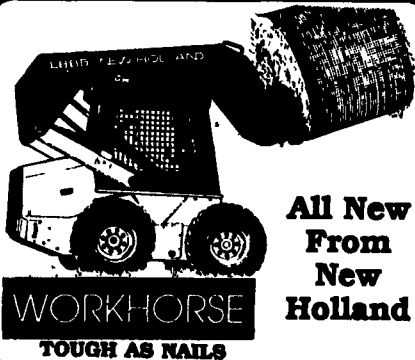


Field To Silo
NH 816 & 818
Forage Box



12 & 14 Ton Gears In Stock!
Faster Unloading
All-Steel Under Construction
WAIVER OF FINANCE TILL
MARCH 1, 1996

BEST CASH PRICE NOW!

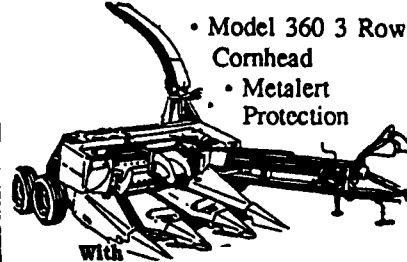


All New From New Holland

WORKHORSE
TOUGH AS NAILS

**NH 790/900
FORAGE HARVESTER**

- Model 360 3 Row Cornhead
- Metalert Protection



With NH 816 Or 818 Forage Box Wagon

TOP CAPACITY

**NH TR87 & TR97
COMBINES**

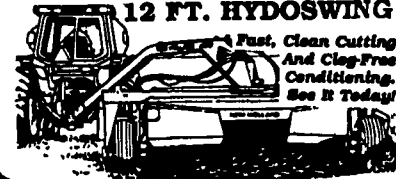
- FEATURING:
- Big Capacity
 - Clean Grain
 - Less Grain Loss



**FILL TALL
SILOS FAST!
NH 40 & 60
BLOWER
540 & 1000 PTO**



**NH 499 MOWER-COND.
12 FT. HYDOSWING**



**NH 800 & 2000
Big Square Balers
Make Perfect Bales
Every Time**



Demo 2000 - Save Big \$\$

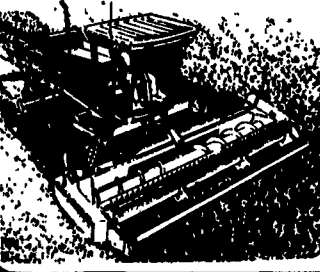
Looking For A Spreader?
Now Is The Time To Buy!

**NH 305,
306, 308
SPREADER**



Waiver of Finance Till Mar. 1, 1996

**NH 2450 SELF-
PROPELLED HAYBINE**



ONE LEFT AT '94 PRICE!

**NH 630, 640, 650,
660 ROUND BALERS**

Make Tight Bales For High Moisture Hay and Corn Fodder Fast!



MESSICK FARM EQUIPMENT, INC.

Rheems Exit - Rt. 283, Elizabethtown, PA
717-367-1319, 717-653-8867

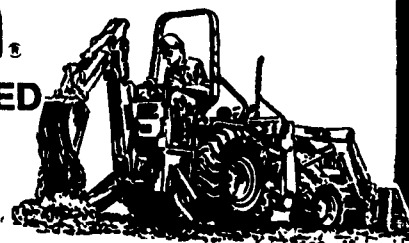


Kubota

TRACTORS FOR EVERY NEED
12 HP to 91 HP

- Farmers
- Home Owners
- Landscapers
- Contractors

We Have A Kubota For You



MESSICK FARM EQUIPMENT, INC.

Rheems Exit - Rt. 283, Elizabethtown, PA 717-367-1319, 717-653-8867