

CENTRAL VIRGINIA: Farms and land available from 5 to 500 acres, reasonable prices, very low taxes, farmer friendly communities, agricultural economy, free catalog

State Wide Realty Co.
Farmville, Virginia
804-392-6163
Farms & Rural Properties
Low Prices, Low Taxes, Free Catalog

C.A. Brandt Real Estate

R.D. 5, Box 352
Bedford, Pennsylvania 15522
110 Acre Dairy Farm - Large barn - 2 cement silos - 9 room house - 50 acres tillable - some owner financing available. \$225,000.00
190 Acre Dairy Farm - Double six Herringbone milking parlor - 2 houses - 4 silos - freestall barn - pond. \$410,000.00
138 1/2 Acre Farm - 70 acres tillable - 4 bedroom house - barn. \$149,000.00
(814) 623-1159

CENTRAL PENNSYLVANIA FARMS, FARMETTES, LAND AND CABINS

Our Farm and Land Division currently has many farms, farmettes, land parcels, and cabins available in central Pennsylvania. We would be happy to send you a free farm and farmette list and/or rural land and cabin list.

See the August 26th or July 29th issues for a complete farm and farmette inventory

Farm and Land Division

Fred Strouse (814) 364-1705
Mel Rocky (814) 466-6688
Terry Gingham (814) 364-1169
Jim Harpster (814) 238-2525



245 S. Allen St.,
State College, PA 16801
(814) 234-4000
1-800-678-3395



MALONE, FRANKLIN COUNTY, NEW YORK VEGETABLE/POTATO FARM OR DAIRY FARM

1200 Acres w/700 tillable acres, 500 wooded, 77' x 177' pole barn w/loading dock containing 45' x 55' refrigeration cooler, repair shop, fertilizer storage 2/4' concrete containment walls, tools, and equipment buildings, dairy and calf barn w/attached 125 head free stall, 4 large forage silos, 3 steel grain silos. All tillable land in use, growing mostly spinach, cauliflower, broc., field corn; 4 bedroom single family home with modern kitchen and inground pool, 2 bedroom mobile home EXCELLENT MULTI-PURPOSE PROPERTY
Ideal for various vegetables. Property can be subdivided, ideal commercial campsite location bordering Trout River. Asking \$475,000.00, possible financing, VCR tape available.

Century 21 Fleury Realty Jerry Shulman
Malone, New York Produce Shipper, Inc.
518/483-4000 Port Jefferson Sta., NY
1-800-645-7776

FOR SALE Farm #1

Retail Garden Center & Produce Mkt 46,000 sq. ft. greenhouse growing area 6,700 sq. ft. display greenhouse 84'x50' retail store w/walk in cooler 2 large houses, bank barn, new 55x100 pole barn, 75 Acres.

Farm #2 2 miles from #1
117 acres, nearly all tillable, large newly remodeled home, bank barn, corn shed, large dam & new well for irrigation. Currently under high state of vegetable production with 200 plus peach, nectarine & plum trees entering full production

Farm #3 adjoining #2
56 acres, no buildings, small stream. These farms are in excellent condition. Soil is very productive. A 5 family operation at present located in Schuylkill Co. Pine Grove area.
Call (717) 739-2789 - home
(717) 739-1140 - store

Northumberland Co.

3 Tracts totaling 309 acres, over 250 good tillable acres, 2 sets of farm buildings.

Northern Snyder County

50 Acres of wooded & open land next to PA Fish Commission's Walker Lake

40 Acre Farm, 1 1/2 Story, 4 BR w/additional

Harry Zimmerman

717-299-4885; 1-800-472-2641



1271 Lititz Pike
Lancaster, PA 17601

LANCASTER COUNTY Manor Township

"Get back to the Farm" - This all brick 2-Story home is situated on 10 acres of fertile farmland. Among the homes features are 4 BRs, 1 1/2 Baths, hardwood floors, first flr laundry, and 2-car garage. This country charmer has been lovingly maintained and is ready for you! Priced at \$190,000. Call Dave today for all the details.

David L. CHARLES



26 Millersville Road
Lancaster, PA 17603 (717) 299-2100

PENNA FARMS HAVE BUYERS!!

In need of 50+ acre farms with or without buildings. Cumberland, Franklin, Adams, Perry, Dauphin, Lancaster or York Counties. If you would consider or would be interested in knowing the market value of your farm - Call for a no obligation estimate of value.

CUMBERLAND COUNTY

50 Acre limestone soil, dairy, cleaner, silos, 3BR dwelling.

56 Acre farm, limestone soil, silo, stream, road, 3BR dwelling. Showings by appointment.

FOR SALE JUNIATA COUNTY FARM LAND

89 acres productive farm land bordered by stream. \$2,100/acre.

Choice vacation home sites, over 2 acres each, southern exposure, great views, easy access, private. \$35,000 each.

3 bedroom home on 2 plus acres in good hunting & recreation area. \$85,000.

(3) one acre riverfront lots. \$10,000/each.

Call CHARLIE BROOKS for details.

717-436-8431

DONALD W. TURBETT, BROKER

717-436-5383 717-248-5130

SOUTHERN VIRGINIA FARMS

FOR SALE AND LEASE
Freddie S. Smith
703/639-2262
703/382-0570
after 8 pm

FOR SALE OR RENT

131 acre dairy farm
Tioga County, PA

59 tie stalls, 2" pipeline, 1 silo, 5 BR house. Immediate possession.

(717) 665-9158
Before 6 AM or after 4:30 P.M.

Somerset County Meyersdale, PA

180 Acre Dairy Farm

Beautifully located in a quiet & peaceful area. 2 homes, twin silos 12x40 w/unloader, 32 stanchion barn w/cleaner & pipeline, cattle barn adjacent, convenient for cattle or horses.

Call for details.

814/634-9235

NEW HORIZONS REAL ESTATE CO.

EXCEPTIONAL 12 attractive acres w/2500 sq.ft log home, decks on 4 sides, 25x32 Master bedroom w/Jacuzzi, center work station in kitchen w/Jenn Air stove, plus antique cook stove, dishwasher, etc Carpeted great room w/woodburner plus dining room, small horse barn, 32x44 roofed shed w/concrete floor and plumbed for bath plus roof patio w/grill Near state land, very private but not remote. Near Williamsburg, PA \$200,000

Belleville Office - 814 355-8500
State College Office - 814 231-8540
Lock Haven Office - 717-748-4500
Clearfield Office - 814-768-8500

MAJOR REAL ESTATE AUCTION

9 Regions & 9 Auctions
Vacant Land
(Some w/Income)
Statewide Pennsylvania

SEPT. 28TH THRU OCT. 9TH
OVER 300 PARCELS

Including Land In Your Area

- ▼ Properties in 35 Counties
- ▼ All Sizes & Types of Parcels
- ▼ Most Prop Sell Absolute!
- ▼ Seller Reserves the Right to Add or Delete Parcels
- Specific, Strict Terms/Conditions Apply!

PROPERTY INFORMATION
\$10⁰⁰ /County, \$25⁰⁰ /Region, or \$200⁰⁰ All Counties
SELLER
Penn Central Properties, Inc



AUCTION HOTLINE (513) 579-6860
Edward J. Doc Horton CAI Auctioneer
PA Lic # AS-000855L - 000893L

Mort Wimple Associates Real Estate Sales - Management

"ESTABLISHED 1953" U.S. ROUTE 20
SLOANSVILLE N.Y. 12160
(518) 875-6355
Free Farm Catalogues FAX: (518) 875-6749

SNYDER CO.

33 Acre Farm with 4 BR log home, new furnace, electric wiring. 1/2 mile of road frontage, bank barn and other out buildings.

Also: on an adjacent separate tract - 1684 sq. ft. 7 year old rancher with a 30 mile view.

LANCASTER CO.

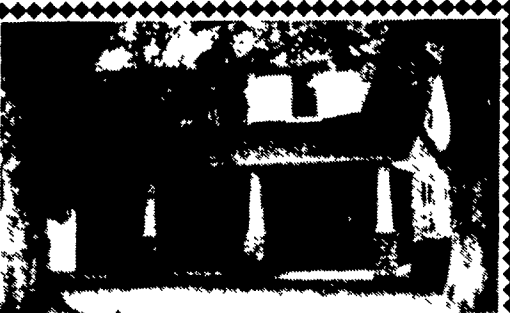
40 Acre Dairy Farm - this one has potential for industrial development. On Rt. 340, Smoketown.

SHIPPENSBURG, PA

84 Acre General Farm zoned R-3 for high density housing or mobile court.

MAHLON OBERHOLTZER AGENCY

Your Central PA Farm Broker
Smoketown, PA 17576 (Lanc. Co.)
717-392-1177



Chambersburg - Franklin County, PA
Small farm - 30+ acres. Ideal soils for fruit production (280 young sweet cherry trees in production), horses, steers, exotic animals among the many other possible uses. Stone house, packing shed, and other outbuildings. \$249,900.



GARMAN REALTY

999 L.W.E. Chambersburg, PA 17201
1-800-715-7355
Ask for Roger

45 Acres Wooded, excellent view, stream, 5 miles from Woolrich. \$45,000.

175 Acres +/- Columbia County, Pine Twp., Lots of Township Road Frontage, w/Little Fishing Creek. \$175,000

630 Acres Clinton County Surrounded by Sproul State Forest, Hyner Run, Hyner View State Park, Paved State Road Runs Through Property. \$350,000

880 Acres Lycoming County, Pine Creek Valley, Watson Township. \$500,000

400 Acres, Clinton County, Bald Eagle Range \$300,000.

Many Other Parcels of Land Available
Call for Additional Details.

Big Woods Land Co.

(717) 769-6445,
(717) 769-6035 Evenings