

# CASH FOR USED DIESEL TRUCKS

- WE NEED 1/2 TON TO ONE TON:**
- FORD DIESELS
  - SUPERCABS
  - CREW CABS
  - DODGE CUMMINGS
  - 2WD or 4x4
  - DUALIES
  - DUMPS
  - UTILITY BODY
  - FLAT BEDS
  - CAB & CHASSIS
  - SUPER DUTIES

LOW MILEAGE ONLY PLEASE

Before you sell or trade your diesel in somewhere else for LESS, CALL US!

We Pay More for Used Diesel Trucks Than Anyone.

**TRY US!**

717-949-2000

Ask for Smokey or Kay



RD 7, Box 405  
Lebanon, PA  
17042



**1988 International S1954 Feed/Grain Truck:**  
DT466 Diesel 210 HP.; Power Steering; Air Brakes; 35,000 GVW; 15' Aluminum Dump Bed; Roll Tar; Rear Auger; Blower; \$18,500

**Curry Supply Co.**  
Curryville, PA.  
1-800-345-2829



**COCKRELLS AUTO SALES**

5270 East Trindle Rd.  
Mechanicsburg, PA  
717-766-4227

## TRUCK SPECIALS



**89 FORD F250 XLT**  
8000 GVW 361 V-8, Auto, AC Fully Loaded, 50,000 Miles  
**\$9,960**



**94 FORD F150 SUPER CAB XLT 4X4,**  
V-8 Fully Loaded  
**\$19,880**



**92 FORD F150 4X4 PICKUP**  
Bright Red, High Speed, Loaded, 6 Months/6,000 Miles Warranty  
**\$14,970**



**92 CHEV SILVERADO PICKUP**  
V-8, Auto, AC, 6 Months/6,000 Miles Warranty  
**\$11,680**



**90 TOYOTA KING CAB PICKUP 4X4**  
V-6, 5 Speed, AC, Cassette 6 Months/6,000 Miles Warranty  
**\$11,890**



**92 TOYOTA 4X4 PICKUP**  
Blue, 5 Speed, Only 20,000 Miles, One Owner, Transferable 75,000 Miles Warranty  
**\$12,880**

OVER 100 CARS & TRUCKS IN STOCK

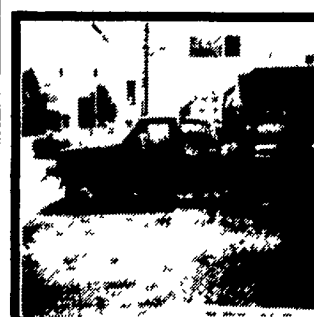
# TRUCKS

The Best Selection of New & Used Trucks Is At Pennsylvania's Leading Truck Source

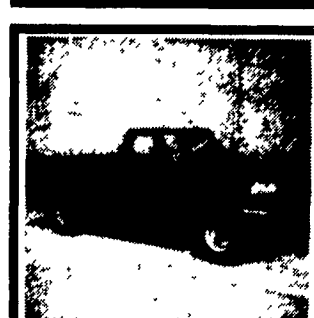
## NEW HOLLAND FORD



**NEW 1995 FORD F-150 4X4 PICKUP**  
4.9L 6 cylinder engine, 5-speed transmission, four wheel drive, power steering & brakes, air cond, stereo cassette, XL trim, argent step bumper, pinstripes & more! #F5039  
**Now Only \$15,993**



**NEW 1995 FORD F-350 CHASSIS CAB**  
5.8L V8 engine, 5-speed transmission, pwr. steering & brakes, FM/AM stereo, 4-10 rear, dual rear wheels, 11,000 lb GVW, heavy duty battery, super engine cooling, XL trim & more! #F4708  
**Now Only \$16,979**



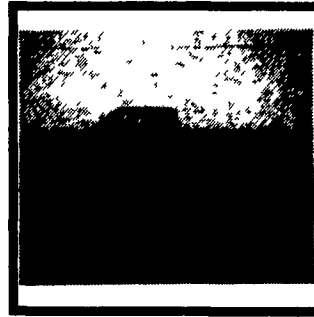
**NEW 1995 FORD F-250 4X4 PICKUP**  
5.8 liter V8 engine, 5-speed transmission, four wheel drive, power steering & brakes, FM/AM stereo, interval wipers, argent rear step bumper & more! #F5006  
**Now Only \$18,795**



**1987 CHEVY SCOTTSDALE 3/4 TON PICKUP**  
350 V8 engine, automatic transmission, ps/pb, FM/AM stereo, heavy duty suspension, runs strong! Ready to work for you! #F4753A  
**Now Only \$3995**



**1990 FORD F-150 PICKUP**  
6 cylinder engine, 5-speed transmission, power steering & brakes, FM/AM stereo cassette, runs great! Ready for work or for play! #F4880A  
**Now Only \$6950**



**1987 FORD F-250 H/DUTY SUPERCAB XLT**  
Diesel engine, automatic transmission, power windows & locks, stereo cassette, cruise control, tilt steering, 2-tone. You can look great & work hard too! #F4658A  
**Now Only \$9998**

**New Holland FORD & ISUZU TRUCKS**  
Route 23, New Holland PA  
717-354-4901 • 800-642-8605

## FISHER TRAILER SALES HORSE STOCK UTILITY

**STOCK** — Bumper \$2650 and up. Gooseneck \$3150 and up includes torsion axles, spare holder and wheel, breakaway, 4 wheel brakes, white spoke wheels. Undercoating full nose on goosenecks delivery 3-4 weeks

### SPECIALS

- 2-Horse Gooseneck w/6' Dress Room 7' tall 1995 tack space feed doors and other extras ..... \$5775. **Reduced to \$5500**
  - 16' Bumper stock plywood lined 1995 \$3200 ..... **Now \$2950**
  - 2-Horse Gooseneck 1990 good condition plywood lined carpet in Dress Room separate tack space ..... **\$3200**
  - Used stock and 2-Horse starting at ..... **\$800**
  - 16' Bumper stock 1994 (new) 7' tall 5200# axles, Moritz heavy duty ..... **\$3400**
  - 12' Bumper stock 1995 7' tall Moritz ..... **\$3000**
- Open 7 days by appointment or chance  
Full notary service  
RD#2 McVeytown, Pa 17051, Strodes Mills Rt. 22  
**(717) 242-0941**  
Turn onto Middle Rd. 1/2 mile

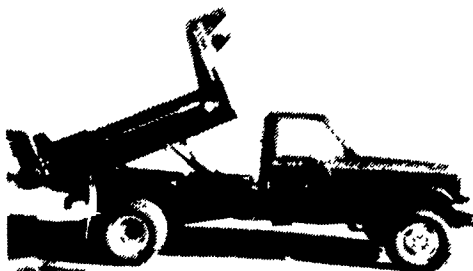
## TRY US! KELLER BROS.

717-949-2000



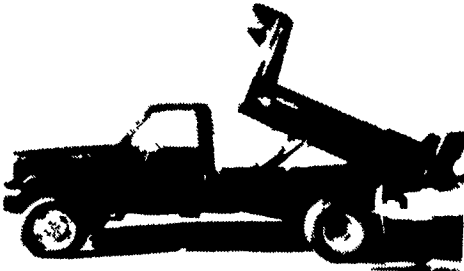
RD 7, Box 405  
Lebanon, PA  
17042

### 4x4



**1995 SUPER DUTY 10' DUMP 4x4, 7.3L Power Stroke, Turbo Diesel, 5-Spd, Air, 15,000 GVWR**

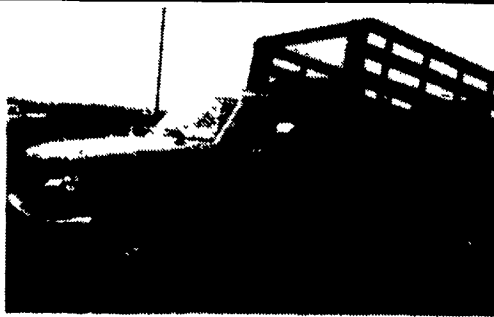
### 4x4



**1995 F350 8' DUMP 4x4, 7.3L Power Stroke Turbo Diesel, 5-Spd, Limited Slip Rear Axle, 11,000 GVWR**



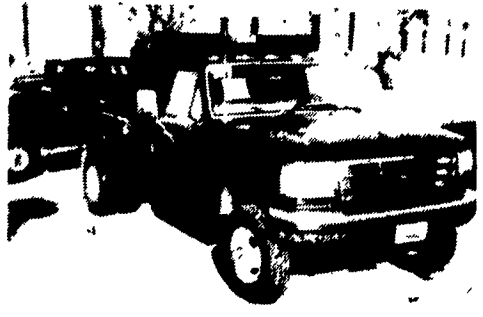
**1995 F-SUPER DUTY CHASSIS CAB, 137" & 161" Wheel Base, 7.3L Power Stroke Turbo Diesel, 5-Spd., 15,000 GVWR**  
3 To Choose From!



**1995 F-SUPER DUTY 12' STAKE BODY DUMP, 7.3L Power Stroke Turbo Diesel, Automatic & 5-Spds. Available! 15,000 GVWR**



**1995 F-SUPER DUTY 8' DUMP, w/Rev. Pack Tool Boxes, 7.3L, Power Stroke Turbo Diesel, 5-Spd., 15,000 GVWR**



**1995 F-SUPER DUTY DUMP, 7.3L Power Stroke Turbo Diesel, 15,000 GVWR, 8' & 10' Bodies Available**