



8'W Eby Aluminum Dump Bed,
9'L w/30' High-Removable Sides
Office **610-347-0688**



1983 IH S1900, SA, dump truck **\$9,000**



1975 GMC 9500, TA, tractor **\$4,000**
LO-BOY 25 Ton w/ramps **\$5,000**
717-355-9870

AG TRUCK BODIES



CUSTOM BUILT - STRONG - DURABLE - CONVENIENT

* Unique Automatic Gate Lock * Ladders Inside & Out * Tapered Design For Easy Unloading * Tarp Rack
HAUL SILAGE, FEED INGREDIENTS, GRAIN AND MORE!

Truck Frame Alteration-
Automatic Tarps - Hoists
Truck Location Assistance -
Financing Available

STILL TIME FOR FALL DELIVERY IF YOU HURRY AND CALL NOW...

DeRuyter Welding & Machine
Cortland Street, DeRuyter, New York 13052
Bruce MacRae
315-852-6123 - 315-852-6245 evenings

- 1993 Olds Cutlass Supreme, Black, V6, AT, AM-FM Cass., AC, PW, PL, CC, 44,264 Mi. **\$11,800**
- 1991 Bayliner Capri Boat 19 Ft., 90 H.P. Outboard Motor, 6 Pass., 0 Mi. **\$6,900**
- 1989 Ford Aerostar XL, Black, 7 Pass., V6, AT, AM-FM St., AC, CC, 68,149 Mi. **\$6,900**
- 1989 Dodge Daytona ES Turbo, Red, 4 Cyl., AT, AM-FM Cass., AC, PW, PL, CC, 73,329 Mi. **\$5,900**
- 1988 Plymouth Grand Voyager LE, Black, V6, AT, AM-FM Cass., AC, PW, PL, CC, 113,412 Mi. **\$4,900**
- 1988 Ford Bronco II Eddie Bauer 4x4, V6, AT, Loaded, Blue, 83,237 Mi. **\$7,800**
- 1987 Chevy 20 Scottsdale Utility Box, Red, V8, AT, AM-FM St., 83,943 Mi. **\$6,900**
- 1987 Chevy S-10 Tahoe 4x4, Black, V6, AT, AM-FM Cas., AC, CC, 94,002 Mi. **\$5,900**
- 1987 Mazda B2000 Ext. Cab SE-5, Brown, 4 Cyl., 5 Spd., AM-FM St, 90,529 Mi. **\$3,900**
- 1987 Jeep Cherokee 4x4 2 Dr., Red, 4.0 6 cyl., AT, Loaded, 70,000 Mi. **\$6,600**
- 1989 Honda Accord DX, 4 Dr., 4 Cyl., 5 Spd., AC, CR, Tilt, Maroon, 66,086 Mi. **\$6,900**

Brubaker's Auto Sales
Myerstown, PA
717-866-5237

WOLF MOTOR CO.

ROUTES 72 & 283, LANCASTER, PA 17601

CENTRAL PA'S FORD TRUCK DEALER

Sales Reps.
Charlie Burke
717-299-4331

Gary Brennenman
Dennis Asel, Mgr.
Toll Free 800-637-6612



1989 FORD LS 8000
33,000 GVW, 215 HP Diesel,
6 Speed, 24' Van Body w/ Lift Gate
\$17,800



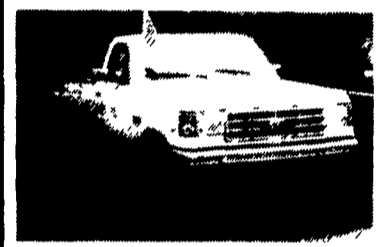
1990 FORD E150 CARGO VAN
6 Cyl., Auto.
\$8,900



1989 FORD F250 4x4
351. Auto. AC
\$11,400



1989 FORD E150 CARGO VAN
V8, Auto.
\$6,400



1991 FORD F250 302 V-8,
4 Speed Manual Trans
\$8,900



1988 FORD E-350
351 V-8, Auto, 14' Gruman Van Body
\$9,200

\$100 TRAVEL EXPENSE VOUCHER

Pay To The Order Of _____
Good for travel expense if you live more than 30 miles from Fred Beans Chevrolet Oldsmobile with the purchase of a new or pre-owned car or truck. One voucher per customer only. Must be authorized by your salesperson. A check for \$100 will then be mailed to you.
Salesperson Authorization _____

COMMERCIAL HEAVY DUTY • LIGHT DUTY • DUMP BODIES • STAKE BODIES • UTILITY BODIES • VANS • CHASSIS CABS • CUBE TRUCKS COMMERCIAL

'95 CHEVY C3500
12' Stake Body
350 V8, auto, 11,000 GVW, 4.10 Rear, #6408
NEW \$19,995

'95 CHEVY C3500
12' Dumping Stake
350 V8, auto, 11,000 GVW, 4.10 Rear, HD aux trans cooking system, #6533
NEW \$21,995

'95 CHEVY K2500
Snowplow Prep
350 V8, auto trans, air cond, cruise, tilt, stereo cassette, #P547
\$18,995

'95 CHEVY C3500
8' Galion Rhino Dump
Full cab shield, PTO direct-mount pump, 5-speed, 350 V8, 4.10 Rear, 11,000 GVW, #6469
NEW \$19,995

'95 CHEVY C3500
w/ 9' Stake Body
350 V8, 11,000 GVW, HD 5 speed, 4.10 rear, & Much More! #6262
NEW \$17,995

'95 CHEVY C1500
6.5 Turbo Diesel
Auto trans, air cond, stereo cassette, cruise, tilt, HD trailering equipment, #6650
NEW \$18,995

'95 CHEVY K2500
6.5 Turbo Diesel
Auto trans, locking differential, 3.73 rear, air cond, cruise, tilt, 4x4, stereo cassette, #6556
NEW \$21,995

WE'LL DELIVER YOUR TRUCK ANYWHERE IN THE USA!
OVER 200 TRUCKS AVAILABLE
1 Tons • 3/4 Tons • 1/2 Tons Diesels • Blazers (Full Size & S-10) Suburbans (2-WD & 4-WD) Vans Conversions, Cargos, Astros, APVs, & More!

'95 CHEVY K2500 4x4
8600 GVW
350 V8, auto trans, 4-10 rear, air cond, cassette, cruise, tilt, HD front springs, #7034
NEW \$21,995

'95 CHEVY HD 3500
14' Stake Body
6.5L turbo engine, diesel, auto trans, 4.63 rear, 15,000 GVW, #6939
NEW \$24,995

FRED BEANS CHEVY TRUCKS
Route 611 North, Doylestown, PA
Call Our Commercial Truck Dept...
(215) 348-3586
800-341-3232