

Family Members Show And Cheer During Fair Season



For a successful fair, it takes both exhibitors to show animals and a cheering section in the audience. This three-generational Kauffman family provides both at the E-town Fair. Grandparents Helen and Harold Kauffman of Landisville brought grandchildren B.J., 14, and Jessica, 8, to watch Jonathan, 12, and Eric, 6, show sheep. Parents Robin and Tracey Kauffman are also on the picture. Robin, who farms 150 acres, said that he showed steers when he was young. He believes that participating in livestock competition teaches responsibility and helps children learn that although not everyone wins, it's good to put forth effort.

Food For Profit

LEBANON (Lebanon Co.) — *Food for Profit*, a two-evening workshop addressing how to get started on a food production business, will be offered at the Penn State Eastgate Center, 7th and Herr Streets, Harrisburg on September 12 and 19 from 6:30 p.m. to 9:30 p.m. Topics covered will include safe food handling, legal aspects, marketing and promotion, packaging and business planning. The

class will feature a "mentor" — currently the owner of a food related business — to give the sessions a mixture of theory and practice. A registration fee of \$10 per person (or \$15 per couple) for the two evenings will cover activities, handouts and light refreshments.

For more information, contact Winifred McGee at the Lebanon County Extension Office (717) 270-4391.

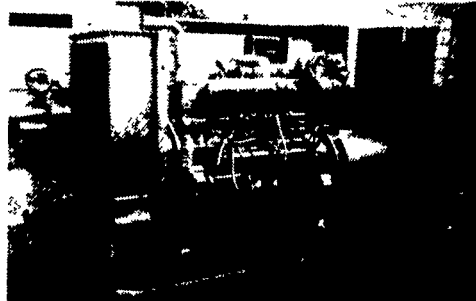
Radon In The Home

LANCASTER (Lancaster Co.) — To find out about what radon is, its health effects, how you can test for it, and what you can do about it, plan to attend, "Radon in the Home: Myths and Realities," an educational program presented by Penn State Cooperative Extension.

The program will be held on Wednesday, September 20, from 7:00 to 9:00 p.m. at the Farm and Home Center, 1383 Arcadia Road, Lancaster.

To register, call (717) 394-6851 by September 19.

MARTIN MACHINERY



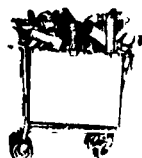
GENERATORS

Sales ★ Service ★ Rentals
 ★ Complete Generator Systems
 ★ PTO ★ Portables ★ 2-1600 KW
 "We Service It If You Have It
 And Sell It If You Need It"

34 W. Mohler Church Rd.
 Ephrata, PA 17522

Tel: 717-738-0300
 Fax: 717-738-4329

Hi-Tensile Intensive Grazing
 Fence Supplies Fence Supplies
**HOTLINE - PARMACK - PEL FENCERS
 SALES & SERVICE**



• Tools • Farm Supplies
 • Housewares • Stanley
 Bostitch Nailers • Werner
 Ladders • Gent-L-Keen
 Hand Products

JR'S HARDWARE

515 Coopers Dr., Kirkwood, PA 17536
 (Same Location as Stauffer Pump Works)

Hours:
 Mon., Wed., Thurs. 6:30-5:00
 Tues. & Fri. 6:30-7:00
 Sat 6:30-4:00

WE SHIP UPS

Attention Central PA Farmers

**Broiler
 and
 Hog
 Finishing
 contracts
 available**
 for new houses



Both Models C2 (above) and H2 (left) start chicks when lowered to floor, finish birds when raised up.

Northeast
 agri
 systems

For more information
 call
1-800-673-2580
 ask for Jay Kreider

CHORE-TIME

Dedicated to
 PRODUCT
 LEADERSHIP

Northeast Agri Systems, Inc.
 Flyway Business Park
 139A West Airport Road
 Lititz, PA 17543
 Ph (717) 569-2702
1-800-673-2580

Delmarva Store
 305 University Ave.
 Federalsburg, MD
 (Formerly Long Lumber)
 1-800-735-4361

Cowtown Rodeo

Cowtown, N.J.

"Cow Capital of the First Frontier"



Located on U.S. Route 40, eight miles east of the Delaware Memorial Bridge in Salem County

SATURDAYS THRU SEPT. 30TH

Every Saturday Night ★ ★ 7:30 Rain or Shine
 Admission \$10 Adults ★ ★ \$5 Children 12 and under
 Free Parking ★ ★ ★ Refreshment Stands
 Group Rates Available: Call 609-769-3200



**Water Quality
 An IMPORTANT
 Ingredient In
 Livestock Management**

It's a fact! Contaminated water can have a costly effect on your livestock and poultry performance. Our years of experience plus hundreds of farm related treatment systems has proven the validity and practicality of correcting contaminated water.



**Martin Water
 Conditioning Co.**
 SPECIALISTS IN FARM WATER TREATMENT

Call us today for treatment of:
 • Nitrates • Bacteria • Iron • Sulfates
 • pH • Acidity/Alkalinity

548 New Holland Ave.
 Lancaster, PA 17602
 (717) 393-3612
 800-224-3612
 -Along Rte. 23

Willis Sharp
 Somerset, PA &
 Surrounding Counties
 (814)-893-5081
 800-893-5081

740 E. Lincoln Ave.
 Myerstown, PA 17067
 (717) 866-7555
 800-887-7555
 Along Rte. 422