

Carlisle Livestock

Market

Carlisle, Pa.

Tuesday, August 29, 1995

Report Supplied by Auction
SLAUGHTER CATTLE: STEERS SELECT AND CHOICE 1100-1400 LBS. 59.00-63.25; SLAUGHTER COWS BREAKING UTILITY AND COMMERCIAL 38.00-41.50, COUPLE TO 44.25; CUTTER AND BONING UTILITY 36.00-40.25; CANNER AND LOW CUTTER 32.00-35.75; BIG MIDDLE 33.00-37.00; SHELLY 30.00 AND DOWN.

BULLS: YG#1 46.75-55.00; YG#2 40.25-44.00.

CALVES: STANDARD AND GOOD 40-110 LBS. 40.00-75.00; CALVES RETURNING TO FARM, HOLSTEIN BULLS #1 95-125 LBS. 105.00-120.00; #2 80-140 LBS. 65.00-100.00; HOLSTEIN HEIFERS #1 70-100 LBS. 150.00-192.50.

SWINE: HOGS, STRONG DEMAND! US#1-3 220-270 LBS. 50.00-51.75; US#2-3 220-270 LBS. 48.75-49.75; SOWS, ACTIVE! US#1-3 300-500 LBS. 31.75-37.00; BOARS, ALL WEIGHTS, 23.00-25.50.

GOATS: BY THE HEAD, LARGE 70.00-90.00; KIDS 35.00-65.00.

LAMBS: GOOD AND CHOICE 80-130 LBS. 75.00-88.00.

SHEEP: ALL WEIGHTS, 18.00-50.00. SALE EVERY TUES. 5:55 P.M. FOR PRODUCE, RABBITS, POULTRY AND EGGS, 7 P.M. FOR LIVESTOCK.

NEXT SPECIAL FEEDER CATTLE SALES ARE TUES., SEPT. 5 AND 19. THE NEXT STATE GRADED FEEDER PIG SALES WILL BE FRI., SEPT. 8 AND 22.

NEXT SPECIAL MONTHLY FED CATTLE SALE TUES., SEPT. 12.

EARLYBIRD PENS CLOSE EVERY TUES. AT 2 P.M.

THE ESTIMATED BASE PRICE AT THE PLANT FOR WED., AUG. 30 WAS 51.50.

LARGE SPRINGING HEIFERS 925.00-1050.00, **SMALL** 700.00-835.00.
SHORT BRED HEIFERS 600.00-910.00.
REGISTERED HEIFERS 835.00-1135.00.
OPEN BREEDING AGE HEIFERS 535.00-610.00.
SMALL OPEN HEIFERS 220.00-460.00.
GRADE BULLS 360.00-425.00, **PURE-BREDS** 675.00-700.00.

Pennsylvania Livestock

WAYNESBURG, PA
 AUGUST 31, 1995

CATTLE:
SLAUGHTER COWS: Utility & commercial 35.00-43.25, cutter & boning utility 33.00-38.00, canner & low cutter 30.00-36.50, shells 30.00 & down.

BULLS: Yield grade 1 1500-2000lb, 42.50-51.50, yield grade 2 1000-1400lb, 40.00-53.50.

FEEDER STEERS: M&L 1 300-500lb, 50.00-74.50, 250-280lb, 60.00-82.00, M 600-900lb, 50.00-66.00. **HEIFERS:** M 1&L 1 300-500lb, 50.00-61.00, L 1 400-650lb, 48.00-60.00. **BULLS:** M&L 1 300-620lb, 48.00-64.50.

CALVES: VEAL: Prime 64.00-81.00, choice 55.00-65.00, good 44.00-54.00.

FARM CALVES: #1 Holstein bulls 90-120lb few 40.00-85.00, #2 Holstein bulls 80-100lb few 48.00-60.00, Beef X bull & Hfrs/hd 35.00-90.00.

HOGS: BARROWS & GILTS: #1-2 210-255lb, 44.50-50.00, #2-3 255-280lb, 35.00-42.00. **SOWS:** #1-3 300-500lb, 24.00-29.50. **FEEDER PIGS:** 1-3 15-20lb, 1-3 25-35lb, 10.00-24.00/hd.

LAMBS: High choice 40-75lb, 65.00-88.00, choice 90-105lb, 68.00-78.00. **FEEDER LAMBS:** Good 55.00-70.00. **SHEEP:** 16.00-30.00.

GOATS: Large 50.00-80.00/hd, medium 30.00-48.00/hd, small 10.00-34.00/hd.

HORSES: Horses 35.00-64.00, ponies 23.00-60.00.

Greencastle Livestock

GREENCASTLE, PA
 AUGUST 31, 1995

CATTLE: 221: Cows: Mostly 1.00-2.00 lower.

HOLSTEINS: Ind choice 1080lbs at 53.75, select ind at 50.00, ind standard at 47.25.

HEIFERS: Ind choice at 58.50.
COWS: Breaking utility & commercial

35.50-38.75 ind 41.50, cutter & boning utility 33.75-37.75, couple to 39.50, canner & low cutter 29.50-33.50, few to 27.00, shells down to 20.00.

BULLS: Yield grade 2 few, 13.00-24.50 bls, 40.50-43.25.

CALVES: 335: Standard & good 75-105 lbs, 35.00-42.00, utility 55-85lbs, 28.00-36.00.

FARM CALVES: Nol Holstein bulls 30.00 lower No 2, steady to 20.00 lower, Nol Holstein heifer 50.60-70.00 down. No 1 Holstein bulls 85-125lbs, 60.00-97.50 few down to 50.00, No 2 Holstein bulls 75-120lbs, 40.00-60.00, No 1 Holstein heifers 80-100lbs, 67.50-147.50, No 2 Holstein heifers 65-85lbs, 35.00-50.00, Beef cross bulls & heifers 70-95lbs, 37.00-70.00.

HOGS: 16.
SOWS: Few 1-3 325-530lbs, 28.75-34.75.

FEEDER PIGS: 15.
SHEEP: 1. **SLAUGHTER SHEEP:** Ind at 23.00.

Jersey Shore Livestock Market, Inc.

Auction every Thursday
 at 4:00 p.m.

Jersey Shore, Pa.

Report supplied by Auction
 Thursday, August 31, 1995

RETURN TO FARM CALF 40.00-140.00.

GOOD VEAL: 30.00-70.00.
COMMON VEAL: 15.00-30.00.

SELECT STEERS: 50.00-54.00.
COMMERCIAL COWS: 35.00-43.75.

CANNERS-CUTTERS: 30.00-37.00.
SHELLS: 20.00-30.50.

CHOICE HEIFERS: 58.00-61.00.
COMMON HEIFERS: 35.00-42.00.

GOOD FEEDERS: 30.00-52.75.
COMMON FEEDERS: 41.00-42.00.



Gruber Picks Wayne Champion

HONESDALE (Wayne Co.)—Henry Gruber, veteran hog judge from New Tripoli, surprised a large crowd of spectators at the Wayne County 4-H Market Hog Show held recently by choosing medium lightweights for his grand and reserve grand champion choices.

From 183 entries that Gruber called "a large selection of fine hogs," Shanna Johnson's 225-pound fresh-appearing Hampshire crossbred took first-place honors. Gruber stated that "this hog would hang up a fine carcass on the rail, and it was firm in its finish."

Reserve grand champion honors went to Chris Ellis's

223-pound Duroc market hog. In the junior swine showmanship contest held the previous evening, Russell Yerkes was selected as the grand champion showman. Reserve grand champion showman was Brian Keating.

A list of division winners follows in weights from 210 to 270 pounds:

Lightweight Champion (210-223 lbs.—39 hogs): Janella Swingle. Reserve Champion: Bradley Swartwout. Medium Lightweight Champion (223-234 lbs.—36 hogs): Shanna Johnson; Reserve Champion: Chris Ellis. Mediumweight Champion (234-242 lbs.—36 hogs): Kears Brussell; Reserve Champion: Tom Nebzydowski. Medium Heavyweight Champion (243-252 lbs.—36 hogs): Eric Smith; Reserve Champion: Kevin Swingle. Heavyweight Champion (252-270 lbs.—36 hogs): Greg Diehl; Reserve Champion: Billy Johnson.

Southeast Regional Cattlemen's Association Hosts Farm Walk

WAKEFIELD (Lancaster Co.)—The Southeast Regional Cattlemen's Association held its first summer farm walk recently here at Wakefield Angus, owned by Joe and Bobbie McMullen.

Approximately 35 members and guests were in attendance.

Wakefield Angus moved to its present location more than two years ago. The McMullen maintain a small herd of registered Angus, breeding entirely AI. A tour of the farm and facilities included cattle handling facilities installed by Frey Brothers Manufacturing and no-till pasture renovation by Triple H Equipment.

Also Jim Saltzman from the Lancaster Conservation District office was on hand to answer

questions and show the recent work completed at the farm. A spring development project, cost share funded, tapped into a natural spring with water troughs installed for the cattle for year-round fresh drinking water.

Future program events include farm walks of Woody Zook's farm in Glenmore and Glenn Moyer's farm located in Telford. For more information or membership application in the Southeast Regional Cattlemen's Association a 100 percent affiliate of Pennsylvania Cattlemen's Association, contact Bobbi McMullen, Secretary, 2384 Robert Fulton Hwy, Peach Bottom, PA 17563, (717) 548-3282.

New Holland Dairy

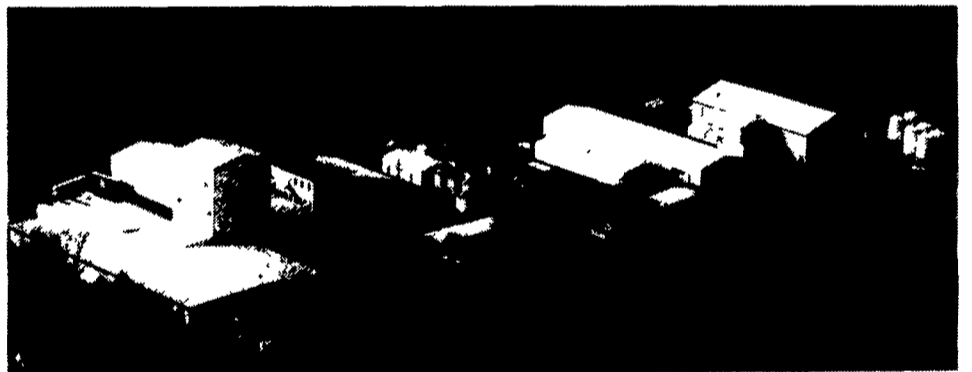
New Holland Sales Stables
 Wednesday, August 29, 1995

Report supplied by auction

DAIRY COWS 159; **HEIFERS** 51; 8 **BULLS**. MARKET STRONGER.
LOCAL FRESH COWS 710.00-1010.00.

LOCAL SPRINGERS 575.00-1075.00.
FRESH HEIFERS 825.00-1275.00.
UPSTATE LOADS 1150.00-1500.00.
2 HERDS 375.00 AND 1110.00, **BETTER** 1200.00-1875.00.

Your Invitation To HYBRID SEED CORN FIELD DAYS



T. A. Doebler and Son Seed Farms

2 Miles West of Jersey Shore, PA. Clinton Co.

SATURDAY and SUNDAY, SEPT. 9 & 10

10 AM - 4 PM

Exit from Route 220 at Pine Creek Interchange 1000 feet South of Intersection of Routes 220 and 44

Choose The Day That Suits You Best

Bring The Family

COME AND SEE!

- Your favorite XP Hybrids in production. See the new line-up for 1996.
- A number of new Very Early Hybrids with new outstanding Early Inbreds.
- Outstanding comparison and observation plots of Doebler's Hybrids.
- Several local corn fields of Doebler's Hybrids entered in Penn State's Five Acre Corn Club with the potential now of 250 bu. plus of dry shelled corn per acre!!
- See all the equipment and facilities necessary to produce Class A Seed Corn.

Free Lunch

KNOW YOUR SOURCE OF SUPPLY. It is more important with seed corn than with any other seed most farmers purchase!

DOEBLER'S

PENNSYLVANIA HYBRIDS

TOURS WILL BE GIVEN BY DOEBLER FAMILY MEMBERS AND DISTRICT SALES REPRESENTATIVES.