

Mack Tandem Dump 14 ft

\$8,500

Curry Supply Co., Curryville, PA

1-800-345-2829

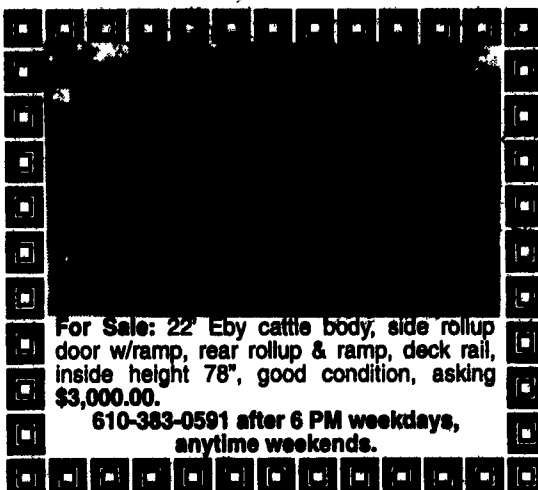
'73 Chevy custom, 18,500 gross, 14' chassis, low mileage engine, \$1375. Union. 717-666-4515.

73 FORD F-750 C&C 194"WB V8 PS 22500GVW \$1000/BO (609)466-2953.

78 International 2050A 36,000 GVW, 3208 CAT, 10Spd. Road Ranger, w/or without Snowplow and Cinder Spreader, Good Shape, (717)433-4518.

79 Ford Pickup 4x4, 400 V8 auto., blue; good condition, \$2500. 717/658-4185.

'81 LN9000 single axle tractor, 300, 9 speed, 35,000 GVW, \$5,500. (717)862-3019.



For Sale: 22' Eby cattle body, side rollup door w/ramp, rear rollup & ramp, deck rail, inside height 78", good condition, asking \$3,000.00.

610-383-0591 after 6 PM weekdays, anytime weekends.



***1980 Magirus (Iveco)**

Cab & Chassis, 27,000 GVW \$2,900

CURRY SUPPLY CO., Curryville, PA

1-800-345-2829



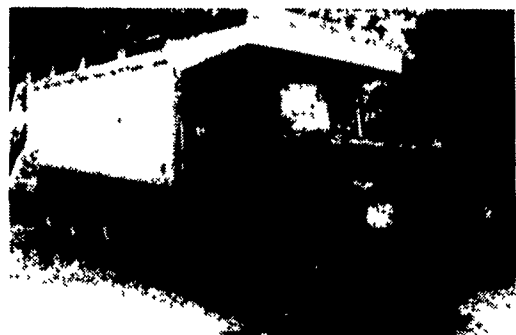
Grain Truck

71 Ford LN 750, Air Brakes, 14' Dump, 5' high sides, P/S 361 Gas, 5 spd, New brakes, rear, springs, clutch, no CDL, spreader available, \$1400.00

(201) 887-3546 or 3846. NJ

WISCONSIN V-4, Low hours - \$700

73 Mack RD Dumps - \$6,500



(2) MACK RD685 Tri-Axle Dump Truck, 237 Mack Engine with Dyantard, 6 Speed, Aluminum Bed, Good condition, \$18,500.00 each.

Curry Supply Co., Curryville, PA

1-800-345-2829

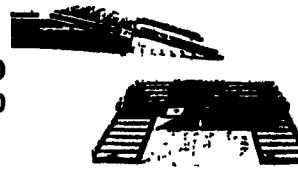
GOOSE NECK TRAILERS

Standard Features: Electric brakes

- I-Beam Construction
- Pine or Oak Floor
- E-235 X 85 X 16 Radials Tires
- Drop Leg Jack
- Convertible Dove Tail
- Flip up Ramps
- PA Inspection.
- Stake Pockets & Rub Rail



| SIZE | G.V.W | PRICE |
|--------|--------|-----------|
| 8 X 20 | 12,000 | \$3695.00 |
| 8 X 24 | 14,000 | \$4290.00 |

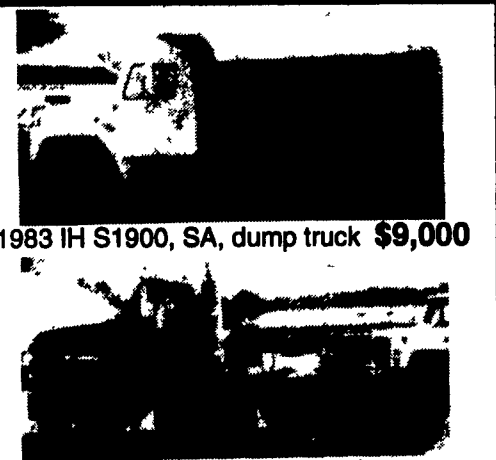


We install Goose Neck Hitches and, wire trucks.

Ringo Hill Farms Equipment Co., Inc.

1624 Rt 212, Quakertown, PA 18951

(610) 346-7340



1983 IH S1900, SA, dump truck **\$9,000**

1975 GMC 9500, TA, tractor **\$4,000**

LO-BOY 25 Ton w/ramps **\$5,000**

717-355-9870

FOR SALE — HONEY DIPPER



1969 CHEVROLET C-50 SEPTIC TRUCK

w/1,500 Gal. Tank, 4-Cyl. Gas Pump and All Hoses, Good condition

Call

(717) 273-7995



1995 Aluminum Silage Body, 18'x66" sides, 18T hoist hydraulic tail-gate mounted on 1985 GMC Brigadier Cummins 7 Spd. new paint, rear brakes. Nice unit. Must sell \$19,500

Call Mon.-Sat. (717) 597-9536

R & R CAR AND TRUCK CENTER

1657 Rohrerstown Road, Lancaster, PA



86 KENWORTH T600, TRI AXLE
22' Hwey Alum. Dump, NTC 400, 9 Spd., D/S, A/C, Air Ride, with Air Lift Axle, Very Clean **\$36,000**



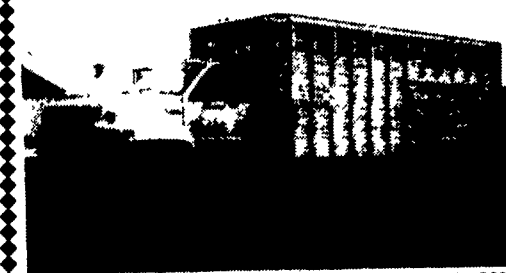
82 IHC S1954, DT466, 5 & 2 Spd, P/S, A/B, 33,200 GVW, 14' Platform Dump, New Insp., Very Clean
Reduced To \$11,900



83 IHC S1954 DT466, 5&2 Spd., P/S, A/B, 26,500 GVW, 18' Morgan Platform Dump
\$12,900

(10) 28'-40'-45' Storage Trailer

Call Ray Leed 717-560-4901



22,000 Mi - 1990 GMC Top Kick CGH-361-V8-2 Spd Rear - 26,000 GVW - 17' Eby Alum Cattle Body - 1 Owner - Showroom Cond. - \$17,900.00. Also 12'x8' Eby Alum Cattle Body Loaded - Used 14 Times - \$4,500.00 Eby 11' Alum. Cattle Body — \$2,500 (Winch Also Available At Add'l Cost)

Call 908-782-4297 or 4168.



INTERNATIONAL 6x6 BRIDGE TRANSPORTING STAKE BODY TRUCKS

Front Winch, PS, Air Brake, 1400/20 Tires, 21 ft. Bed with removable steel racks. Continental 6 cyl. engine. LIKE NEW 600-2,500 Miles. Excellent for off road heavy duty cargo transporting with their all wheel drive and ability to climb a maximum grade of 70 degrees. Double Frame. A must for every farmer.

\$7,500 to \$10,500

(814) 834-1018 St. Marys, PA

At Hostetlers...



1985 DODGE STAKE BODY TRUCK

V8, Auto, Toolbox, +9' Bed

\$4,295



1976 INTERNATIONAL 1300 TRUCK

12' Van Body, V8, 4 Speed

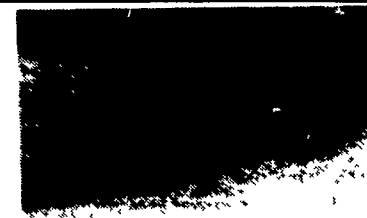
\$2,495



1978 INTERNATIONAL GRAIN TRUCK

New Body & Hoist, V8, 5&2 Speed, Not Truck Pictured

\$9,600



16' ALL PURPOSE TRAILER

10,000# GVW, Sides Available

\$2,550



GOOSENECK GRAIN TRAILER

15,000# GVW, Truck Body & Hoist

\$7,200



BUMPER DUMP TRAILER

10,000# GVW, 6' Platform With 8' Dump Truck Body

\$5,695



NEW MORITZ ROUND NOSE LIVESTOCK

Torsion Axles 6'x16'

\$3,195



GOOSENECK UTILITY TRAILER

Angle Rail For Top Deck, 10,000#

GVW, 18' Long

\$2,995

More In Stock Call For More Details



Hostetler Truck Bodies & Trailers

Rt. 322 Milroy, PA 17603

(717) 667-3921