

5 GRAIN EQUIPMENT

(2) Corn cribs, 40' long, 12' high w/20' storage between cribs. Can be moved in sections. Best offer over \$100 Lancaster Co. 717-627-2894.

6" tube auger w/drives. 18 ton round metal grain tank w/draw off. 4 bucket elevators, turn heads, roller mills, 5 ton roller mixer weight hopper. V-trough augers w/drives. 1 cluster 3 rectangular bins. 1 cluster 4 rectangular bins. Many other assorted. Pieces of mill equipment. 2 round overhead load-out bins on structural steel, various sizes of spouting. (717)253-6071.

8'x41" PTO transport grain auger w/hopper. 410-692-9564.

Ag-Wrap round bale wrapper, 1 year old, bale guard wrap, bale grabber used 1 year. (717)637-8131.

Behlen corn cribs, 3000bu., 9 for sale, 2 immediate, 1 year old, \$1500/each. 412/586-6816.

Specializing in building and dismantling grain bins and equipment. Built-Rite Enterprises. 717/336-6215 David Zimmerman.

Used feed handling and processing equipment: Blower; air lock; 9'x30' Rockamp roller mill; 16' Daphin Hammermill w/ screens; Lopec electronic scales; 16' harvest handler elevator; blower pipes. 717-733-2808.

LIGHTING
Metal
Installation
Free estimates
Information mailed
Call toll free:
1 800 532-0990

6 DAIRY EQUIPMENT

FOR SALE: Lots of used claws, shells, pulsators, takeoffs, meters, weighers, bucket milkers, DV-300's, receiver groups, CIP's, etc. Many brands and models. "Free" UPS shipping or delivery. BUY-SELL-TRADE. 15 day Satisfaction Guarantee. E-ZEE MILKING EQUIPMENT, INC. "Specializing in used equipment". Gordonville, PA 17529. 717-768-7599.

Germania automatic takeoffs, very thoroughly reconditioned, most models available, sold with one year parts warranty. Delivered and installed on your farm. Buy or lease! Midstate Dairy Systems, DeWuylter, NY, 13052. (815)852-9591.

Majonner 650 gallon w/ pump complete Sun wash, 32HF auto pipeline washer, Sun wash 3 tank washer, DeLaval vacuum pump and trans pump. 301-253-2751.

Mueller bulk tank, 800 gal. w/new compressor and automatic washer, DeLaval 2" SS pipeline for 52 cows complete w/4 DV 300 units. \$8000 OBO. 717/549-4805.

Matz barn cleaner: 260' chain, 16 DeLaval water bowls w/push button. 717/637-8131.

FANS
END OF SEASON CLEARANCE SALE!
Weaver
Distributing
1-800-932-8373
current stock only!

WANTED:

Good Used Milk Tanks - Any Size
No Ice Banks or Girton

1-800-448-4697

Today's Diesel at Yesterday's Prices? THAT'S RIGHT!



Special Pricing on Selected 912 Models THESE ARE NEW ENGINES

F3L912 - 34 HP @ 1500 RPM
42 HP @ 1800 RPM **\$3,800**
F4L912 & F6L912 Models Also Available

Call Us For All Your Diesel Needs

Diesel is Our Specialty - Not A Sideline!

RUFUS BRUBAKER REFRIGERATION & POWER

76 Pumping Station Rd.
Quarryville, PA 17566

717-786-1617

DeLaval

10 Auto Cord Takeoffs For Stanchion Barn
12 Auto Cords for Parlor
3" Low Line for Double 8 & Double 12 Parlor (Parallel)
2 3" SS Double/Top Entry Receivers
24 Super-flow units
24 Delatron Pulsators
12 SST take offs
Double 9 herringbone, SST takeoffs, 3" low line, blue diamond breast rail, 2 years old
Vacuum pump w/15 hp motor
Double 6 3" low line w/washer
Rationmaster computer feeder w/5 stations
Double 4 Parlor w/take offs & weigh jars
Double 4 parlor w/take offs & 2" low line
78 vacuum pump
8 Super flow claws
8 Delatron pulsators
6 85 lb. weigh jars
8 65 lb. weigh jars

Boumatic

8 2100 take offs
6 Little Champ take offs
Double 4 2 1/2" low line w/washer
Double 8 3" low line
Double 6 3" low line
DB2000 vacuum pump w/10 hp motor
4 star flow claws & shells
Claws pulsators & washer

Westfalla

3" Low Line for double 6, 12 Bio claws, 12 Stimupulse pulsators, 2800 vacuum pump, ACR3 take offs w/S.S. cylinders, 2 years old
Back flush system for double 4
Double 8 w/DeLaval stalls & Westfalla 3" low line.
36' Westfalla crowd gate
4 station computer feeder
2800 Vacuum Pump w/5 HP motor

Surge

Double 6 Super Stall Herringbone Stalls
Double 4 Easy Milking Herringbone Stalls
Double 12 3" low line
3" double 4 low line
16 Eclipse Milkers w/pulsators
7 HTO air takeoffs
3" lowline, for double 6
Electrobrain washer
(8) weigh jars w/bracket
(16) VSO take offs
Double 4 parlor w/take offs & 2" low line
Double 6 parlor w/take offs & 3" low line
100 plus vacuum pump

Germania

20 Model B Take-offs
8 Milking clowas & shells

Miscellaneous

12 Choretime feeders w/Big Dutchman feed system
Metal free stall dividers
(2) 2" SS Pipeline for 30 stanchion barn, DeLaval, Boumatic
20x50 Harvestore, no unloader
Buy & Sell used milk tanks - any size

Freddie S. Smith
703/639-2262

90 gallon commercial propane gas hot water heater in excellent condition, \$500 OBO. Leave message, (908)859-3344.

Choreboy twin vacuum pump. Stump Acres, (717)792-3216.

Pipeline 2" S/S for 50 cow barn. Surge receiver group. 25 water bowls. Priced to sell. Call M-F, 8am-5pm, (717)458-5185.

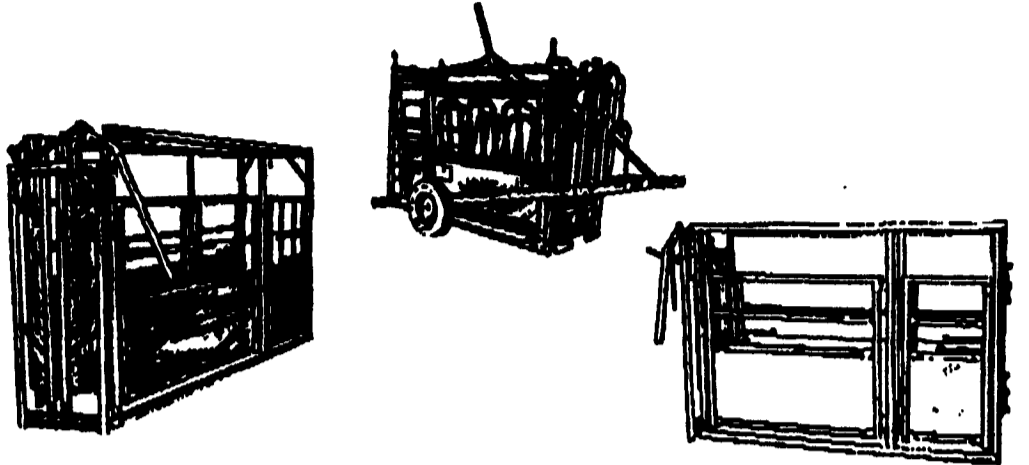
800 gallon Surge tank, R-22, new compressor and agitator motor, \$4000 OBO. 301-842-2978.

65' Wooden bunk feeder, taperboard part 50' long; 2-ton Imperial feed bin w/10' auger. 717/966-2104.

LIVESTOCK EQUIPMENT SPECIALIST

FREY BROS. MFG.

If cattlemen use it, Frey Bros. makes it. Check with us for your livestock needs.



- Work Chutes
- Squeeze Chutes
- Trailers For Chutes
- Head Gates
- Dressing Chutes
- Creep Feeders
- Portable Horse Stalls
- Horse Paddocks
- Grain & Hay Bunks
- Panels & Gates 4-5-6 Bar
- Panel Frame/Wire Gates
- Portable Corrals
- Alley Panels/Arches
- Slide or Regular Arches
- Loading Chutes
- Foot Trimming Tables
- Show/Sale Barns
- Portable Scales
- Round Bale Feeders

"CUSTOM MADE PRODUCTS A SPECIALTY"

Clayton Metzler, Salesman
717/786-2146 Office
717/786-7509 Fax

FREY BROS. INC.
372 Puseyville Road
Quarryville, PA 17566



Milk IS the real thing!

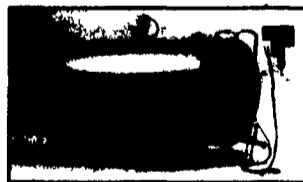
A 1st Class Team Together For 25 Years!



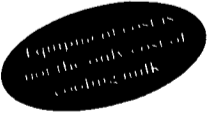
RUFUS BRUBAKER REFRIGERATION
And...
MUELLER
DAIRY FARM EQUIPMENT

Scroll-Compressor Technology

New in 1994



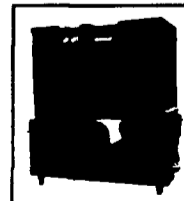
You may pay less for some dairy farm equipment... but it can cost you more!



In the long run, total operating costs of a Mueller milk-cooling system are generally substantially less than those of "bargain-brand" milk-cooling equipment.

Example	Mueller	Competition
Cost of equipment	\$31,000	\$28,000
Cost of electricity @ .08 kW for 12,000 lbs milk/day for 10 years	\$17,550	\$22,850
Total operating cost for ten years	\$48,550	\$50,850
Savings	\$2,300	

Contact your Mueller distributor for further comparisons.



6 MONTHS FREE FINANCING

For Qualified Buyer See Us Today For Details!

Southern Service Center
76 Pumping Station Rd.
Quarryville, Pa.
717-786-1617
Vic Leininger

MAIN OFFICE

1048 North Penryn Rd.
Manheim, Pa. 17545

717-665-3525
Ken or Ed Brubaker

Northern Service Center
541 Frystown Rd.
Myerstown, Pa.
717-933-4711
Ken Kopp

★ Call Today For All Your New or Used Milk Tank And Refrigeration Equipment Needs!