

4 BUILDINGS AND SUPPLIES

WANTED TO BUY

Wide original attic flooring - wide grainery - wide thick roofer boards. Chestnut and yellow heart pine beams - old log houses, early timber frame houses, summer kitchens and old stone & brick houses for salvage. Also early factories, barns, and warehouses. Built-in cupboards and fireplace mantles.

**I always pay the most and travel the farthest!
Always make sure you get a price from me.
(610) 857-5504 anytime**



**"Steel Top"
steel truss & building
manufacturer**

CUSTOM AND STANDARD WIDTHS

Standard widths
24', 32', 40', 50', 60', 70', 80', 90', 100', 110', 120'
steel columns (straight or tapered)
Engineer sealed truss prints, erection labor, roofing,
siding and trim packages, reflective insulation
All orders include necessary hardware (i.e. bolts & clips)
All orders FOB Mt. Holly, NJ
Shipping available or pick up yourself

**COMPLETE BUILDINGS - OR - TRUSSES ONLY
609-267-5571 or FAX 609-267-8135**

Steel Top Buildings
223 Warner Road, Columbus, NJ 08022

Route 41
Atglen, Pa. 19310



800-964-1550
610-593-3500
fax 593-2510

... LOCATION ...

20 miles East of Lancaster, PA on RT 41
or 20 miles North of Wilmington, Delaware

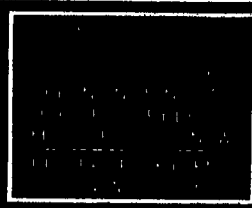
**Post & Frame Building Materials
Metal Roofing our Specialty**



R Panel - 26 Gauge

- 20 yr. warranty
- 26 & 29 Gauge
- Window Doors
- Insulation
- Overhead Garage Doors
- Electric Openers
- Trusses

**Ask About Special
Pricing On
Close Out Colors**



**Klin Dried Tongue
& Groove Flooring
2x6 #2 Yellow Pine
2x8 #3 Yellow Pine
717/627-1427**

6 DAIRY EQUIPMENT

Good Used Milk Equipment

MUELLER Bulk Tanks	SUNSET
1 - 1000 gal M...\$4,100	1 - 735 gal.....\$3,400
1 - 800 gal M....\$3,800	1 - 545 gal.....\$1,200
2 - 700 gal M....\$3,500	
1 - 500 gal MW.\$1,500	DELAVAL
1 - 400 gal M.....\$900	1 - 800 gal

Fisher Sales Enterprise

R.D. 2 Box 116
Loganton, PA 17747
717-725-2061

**IN GROUND
MANURE STORAGE
INSTALLATIONS**



- ★ S.C.S. Approved
- ★ Underlayment between Liner and Earth
- ★ High Density Polyethylene (60 mil thick) Liner Guaranteed for 20 Years
- ★ More Economical than Concrete
- ★ Leak Detection System
- ★ Installed on site by Certified Installers

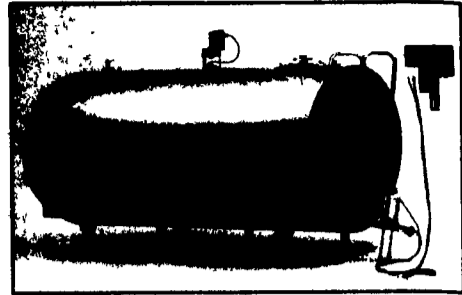


Complete installation By

MANADA CONSTRUCTION CO.

LAND IMPROVEMENT & EXCAVATION CONTRACTORS
151 Meckville Road, Myerstown, PA 17067
717-933-8853 or 933-4062

**High Performance...
A HiPerForm Standard
Feature!**



**MUELLER
HiPerForm**

No other cooler offers so many high performance features.

GOOD USED TANKS

- 900 Gal. OH
- 1000 Gal. OH
- 1250 Gal. OH
- 1500 Gal. OH

Trust! We Work At It.
AUTH. MUELLER DEALER

PRIEST'S REFRIGERATION

20205 Marsh Haven Lane, Hagerstown, MD 21742
301-797-3921
24 HOUR SERVICE

**A New Range of Diesel Engines
from**



- Quiet running
- Liquid cooled
- Cast iron crankcase
- Cast iron cylinder head

Comes with starter,
alternator, radiator & mounting feet
Very competitively priced

**GIVE US A TRY - CHECK OUR PRICES
DIESEL OUR SPECIALITY**

Distributor for
Lister/petter and Lombardini Diesel Engines
6-8-12V Regulated
CHARGE-MASTER Battery Charger

**HOOVER DIESEL
SERVICE**

255 Mascot Rd., Ronks, PA 17572
(717) 656-3322 (717) 295-1729

5 GRAIN EQUIPMENT

Will dismantle and set up used grain bins and equipment. Can furnish new hardware and accessories. Sones Grain Systems 717-584-2282.



Grain Bins
Grain Dryers

Hance Corp.
Elevators

**Sones
Grain Systems**
Jim & John

Check Our Prices Before You Order
We Personally Install Everything We Sell
717-584-2282

RR7, Box 470
Muncy, PA 17756



Stirring Machines
Grain Cleaners

WANTED: Log cabins, barns, granaries, out-buildings, Steel buildings to take down FOR PAY, FOR SALVAGE, OR TO BUY. Also restoration or repair. Terms neg.

INSURED and REFERENCES.
Site Clean Up & Hauling Available
(Will travel anywhere)

410/820-2191



The Old Mule

5 GRAIN EQUIPMENT

**Glenn Hade & Sons
Light Duty Excavating**
(717) 225-6325

Grain Bin & Wire Crib Foundation
(Complete including concrete work)

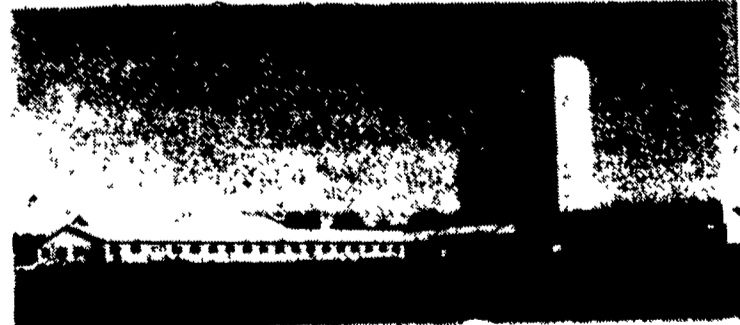


- Backhoe
- Hydraulic Breaker
- Earth & Posthole Auger
- Landscape Rake
- Angle Broom, Etc.

Also Available for Backfilling: Poultry House & Stable Cleaning; Septic Systems; Complete (including concrete work) for Grain & Feed Storage Foundations.

**Smucker
Construction**
135 Churchtown Road
Narvon, Pa. 17555

Call us today for all
your building needs
717-768-8606



40'x200' Dairy Barn
128' Heifer and dry cow
barn with pit and
slatted floor

