

## Public Auction Register

Closing Date Monday 5:00 P.M.  
of each week's publication

THURS. AUG. 31 - 4PM  
Remaining Contents of  
Imagine This Flower & Gift  
Shop. Located at 153 East  
High Street, Elizabethtown,  
PA. Harold (Abe) Shaffner  
& Mark Diffenderfer Aucts.

THURS. AUG. 31 - 6PM  
Real Estate, Household  
Goods, Riding Mower.  
Located Off Rt. 340, East of  
Intercourse, at 17 South  
West View Dr., Intercourse,  
Leacock Twp., Lanc. Co.,  
PA. Terms by Harold A. &  
Eleanor S. Hess, Robert E.  
& Jeffrey R. Martin Aucts.

### SEPTEMBER

FRI. SEPT. 1 - Fall Machin-  
ery Sale. Belleville Lives-  
tock Market, Inc.

FRI. SEPT. 1 - 9AM Herd  
Dispersal, Horses, Crops &  
Farm Equip. 472 S. of  
Quarryville approx. 7 miles  
to Kirkwood Rd. turn left on  
Maple Shade Rd. to 2nd rd.  
right Cooper Dr. to sale on  
right or 896 S. of Strasburg  
to Nine Points turn right on  
Noble Rd. to Bartville go  
straight on Rosedale Rd. S.  
to Morrison Mill Rd., turn  
right to T Cooper Dr., left to  
sale on right. Sarah Stoltz-  
fus, owner. Mel Hoover,  
auct.

FRI. SEPT. 1 - 10AM  
Northumberland Co. Dairy  
Farm, Holstein Dairy Herd  
Dispersal. Complete Line  
Modern Farm Machinery.  
Located RR 1, Paxinos,  
PA. Owners: Joseph G. &  
Sharon J. Krushinski.  
Bryan D. Imes Auct.

FRI. SEPT. 1 - 11AM Milk-  
land Farm complete Dis-  
persal Auction. 150 Heifers  
and Machinery. Auction to  
be held on farm on 5821  
Chenango Rd. Turn off Rt  
13 in Truxton, NY to Che-  
nango Rd, go 2 mi to farm.  
Mel Manasse Auctioneers.

FRI. SEPT. 1 - 1PM Pig  
State Graded Sale. West-  
minster Livestock Auction,  
Westminster, MD.

FRI. SEPT. 1 - 1:30PM  
Dairy Heifer Consignment  
Sale. Empire Livestock  
Marketing Inc. Troy, PA.

FRI. SEPT. 1 - 4PM and  
Labor Day MON. SEPT. 4

8:30AM RD #3 Milton.  
Exceptional collection of  
antiques, collectibles,  
guns, farm equip, 1931  
Chrysler car, tractors,  
trucks, and horses. A. Lea-  
land and Audrey Minick,  
owners. Hassinger/  
Courtney, aucts.

FRI. SEPT. 1 - 4PM & SAT.  
SEPT. 2 - 8:30AM two-day

auCTION of the libraries of  
the Late Martin E. Ressler  
of Quarryville, Mrs. Gretchen  
Drennen of Lanc. At  
Horst Auction Center, 50  
Durlach Rd., Corner of Rt.  
322 & Durlach Rd., W. of  
Ephrata, Lanc. Co., Pa.  
Horst Aucts.

FRI. SEPT. 1 - 5:30PM &  
SAT. SEPT. 2 - 9AM Far-  
mette real estate & person-

al property. At 395 Piper  
Rd., Shippensburg, Pa.  
From Shippensburg travel  
S. Queen St. for approx. 1

mile to Piper Rd. Turn right  
onto Piper Rd. for approx. 1  
mile. Mrs. Leroy "Crea"  
Koser. Dan Hershey Aucts.

## PUBLIC AUCTION



THE ESTATE OF  
DOROTHY SMITH  
OFFERS A 7.5 ACRE ESTATE AT  
ABSOLUTE AUCTION

Tues., Sept. 26, 1995  
at 12:30 PM

Located along Rt. 100/Rt. 29 at #5482 Chestnut St.,  
Shimerville, (8 mi. south of Allentown) Lehigh Co.,  
PA



This southern colonial home was built in 1842, has  
always been well maintained. 1st floor - has 5 rooms,  
2 fireplaces, bath, lg center hall, plus 2 lg. screened in  
sun porches. 2nd floor - has 4 BR's, nursery, dressing  
rm, lg center hall, walk in closets, bath plus a lg  
screened in sun porch overlooking the estate. 3rd floor  
- has 2 lg BR's & lg. closets, plus storage rms. A lg.  
basement includes a lg. sunken wine cellar plus a heat-  
ed tool rm. Barn - a lg. 2 story masonry & frame con-  
struction w/4 lg. box stalls, space available for a total  
of 10 horses, 4 car garage, 12'x35' horse van or trail-  
er storage.

For detailed information, preview & terms contact  
Ralph W. Zettlemyer Auction Co., Box 215,  
Fogelsville, PA 18051 (610) 395-8084

Fax (610) 395-0227 PA Lic #AU001809-L  
Conducted by

PO Box 215 • Fogelsville, PA 18051 • 610-395-8084 • Fax (610) 395-0227 • License #AD001809-L  
RALPH W. ZETTMAYER AUCTION

## WOLGEMUTH'S FALL CONSIGNMENT AUCTION

SAT., SEPT. 2, 1995

9 A.M.

Located 4 miles west of Manheim, along Valley  
Road off Hossler Road, 10 min. from Rt. 283,  
Lanc. Co. PA. Watch for sale signs.

### \*\*\*\*\*TRACTORS\*\*\*\*\*

Farmall H, Farmall 400, A.C. WD 45 (clean), AC B,  
Case 400-diesel-3pt, JD D elec. start

### \*\*\*FARM EQUIPMENT\*\*\*

5-tooth penetrator soil saver (new), IH 1 & 2 B. 3 pt.  
plows, IH 3 B. semi mount plow, OLIVER 252 16'  
wing disc trans., Oliver 12' trans. disc, IH 12' Vibra  
Shank, IH 12' S-tine trans. field harrows, White 285  
trans, Glencoe, and IH 3 pt. field harrows, Brillion  
12' trans. packer, Brillion 10' packer, JD and IH 4R  
S-tine cultivators, Long 12' stalk shredder, Speedy 6'  
stalk shread., 2-250 Bu. gravity bins, 2 gravity bin &  
gears, JD 3 pt. 6' blade, corn drag, JD 414 rotary hoe  
3 pt., 2-12' run. gear, MH wood grain drill, JD KBA  
and IH 8' trans. discs, Zimmerman 10,000 lb. Low  
Boy trailer-18', 2-Oliver walk plows, potato plow,  
Buch & Mountville iron troughs, 2 & 3 prong hay  
forks, Daisy seed planter, Farquhar corn sheller,  
scald. trough, sm. trash dumpster, MC Deering #100  
manure spreader (like new), fork lift forks, Oliver  
Lentz plate mill, 12 barn fans (like new)

### \*\*\*LAWN & GARDEN\*\*\*

Cub Cadet-diesel, Sears-20 Hp, Simplicity-16 Hp,  
JD 140 w/snow blower, Troy Built tiller, tire chains,  
Cub Cadet 682 hydro-44" deck, Bolens 12 1/2 Hp-200  
hrs, 77 GMC van w/wh. chair lift & lock, 2-95 Ford  
van captain chairs

\*\*\*\*This is only a partial listing.

Items are coming in daily.\*\*\*\*

Turn that unused equipment into cash! NO  
household goods, used tires or junk accepted.  
Receiving through Sept. 1, 8-5 p.m. Sat. til 3 p.m.  
CLOSED Sundays. Food available.

ORDER OF SALE-small items-9:00;  
farm equip.-10:00

WOLGEMUTH AUCTION SERVICE  
Robert Wolgemuth-Manager  
Lic. #1534  
2101 Valley Road  
Manheim, PA 17545  
717-665-6684 or 733-8192

## ED-MART FARM COMPLETE DISPERSAL OF CATTLE, MACHINERY, BARN EQUIPMENT SAT., SEPT. 9, 1995

AT 10:00 A.M.

LOCATED: Pine Valley NY, 4 mi. North of Horseheads, 12  
mi. south of Watkins Glen, turn West on Stits Hill Rd. by  
Holliday Trailer Park sign, go 2 mi. (Chemung Co.), watch for  
Auction signs in village of Pine Valley, NY.

62 HEAD OF HOLSTEINS - 46 HI-GRADES - 16 REG., 34  
MATURE - 17,458M, 627F, 3.6%, 558P, 3.2% AS OF 08-04-  
95. Herd in all stages of lactation, 15 over 20,000 lbs., an '87  
VG88 Sexation due 08-09-95, finished 338 24,251m, 853f, life-  
time 113,252; nice '92 Caveman-red fr. 05-03-95 84 lbs. 08-04-  
95 test; Reva "Grade" fr. 06-20-95 46 da. 4718m, 105 lbs. 08-04-  
95 test. Tie stall herd, good condition.

BRED HEIFERS - 9 short-bred to close. OPEN HEIFERS - 8  
breeding age (bull just put in with them); bal. started calves. Hfrs.  
have size & condition BLOOD & TB TESTED READY FOR  
INTERSTATE - PREG. EXAMINED - SHOTS FOR  
SHIPPING FEVER - CATALOGS - NO BST - A NICE  
HERD. ED AND MARTHA HAVE GIVEN THESE  
ANIMALS GOOD CARE, FED HAY, GRAIN, SILAGE AND  
PASTURE.

TRACTORS: 1070 CASE, Cab, air, 18-4-38 radial rubber 80%,  
new rebuilt eng. (turbo) (Central Tractor) by HANSONS, 300  
hrs., 125 on dyno.; 870 CASE, cab, dual remotes, 70.6 pto. 18-4-  
34 rubber 90%; 1210 DAVID BROWN 12/4 spd., 18-4-30 rubber  
90%, (5100 hrs); Case model 60 front loader (6' bucket); 660  
CASE A201G combine, cab, 12' gr. head, 2-r. corn head, (extra  
clean, always stored inside); 1968 CHEV. TRK. C-50 w/12' wood  
dump box, 292 rebuilt eng., new rubber rear, current inspection  
(nice);

HAYING & HARVESTING: 5500 HESSTON round baler, (al-  
ways stored inside); 273 NH baler w/#54 kicker; 469 NH haybine  
(rubber rolls good); BB600 GEHL chopper (1000 RPM)  
w/PR600 2-r corn head; INT. 5-bar rake; JD 4-bar rake; flat bed  
w/Coby gr.; NH #19 box w/gr.; GEHL BU 83 silage box w/gr.;  
NH #7 silage box w/twin I-beam gr.; (3) oak wood 8x16 kicker  
racks w/grs; 40' skelton hay ele.; NI 24' hay & gr. elev. w/mtr.;  
NH 27 blower; NI #7 corn picker;

TILLAGE: 546 OLIVER 4x16 spring-cushion plow; 546  
OLIVER 4x16 hyd. reset w/coulters, side hill; PITTSBURG  
transport harrow; PITTSBURG 3-sec. harrow; 1240 JD planter,  
4-r. plateless, dbl. disc.; ONTARIO disc drill (rubber);

OTHER: CENTRAL TRACTOR 3-pt. bale carrier; 213 NI  
spreader, (Gratz chain); 175-gal. fuel tank (hand pump); 3-pt. fert.  
spreader; 12x18 wire corn bin; home-built log splitter; (2) rolls  
new woven wire; (2) round bale feeders; belt pulley for Int. tractor;  
18-4-34 dbl.-ring chains (1 yr); 300 gal. field sprayer;

BARN EQUIPMENT: 16x40 MADISON concrete-stave silo  
w/alum. roof w/alum. chute; approx. 40' galv. 9" pipe;  
LANCASTER distributor; 16' JAMESWAY Volume Master  
unloader (good condition); 270' PATZ drop cleaner chain w/unit  
(5 hp mtr.) counter clockwise; (3) 36" fans; 20 bu. poly feed cart;  
22 Agway water cups; semen tank 34XT (charged 8-7-95); semen  
kit box;

MILKING EQUIPMENT: DELAVAL "NEW CENTURY"  
800-gal. bulk tank (7 yrs.); auto-matic tank washer; TECUMSEH  
condensing unit, 41,500 BTU.; 35-gal. pre-heater; 200' 2" stain-  
less steel pipe line (4' stalls); glass receiver jar, Delaval washer,  
washvat; (4) DELAVAL milker units w/urge pulsation;  
DELAVAL milker pump - Model VP 76 w/oil reclaimmer, 3-hp.  
mtr.;

GARAGE TOOLS: WEAVER 3-T. air jack; (2) automobile  
tune-up machines (for models 1990 & older) (good cond.); bubble  
wheel-balancer; elec. spin-balancer; parts to a Hunter easy-align-  
ment mach.; + more related items.

TERMS: CASH OR GOOD CHECK SALE DAY.

SALE ORDER - garage tools 10:00 a.m., mach. after tools,  
livestock 1:00

OWNERS  
EDMON & MARTHA FAULKNER  
PH. (607-739-8984)

Consigned from neighbor: (2) 920 GEHL 2-btr. silage boxes  
w/8 & 10-T. grs; KOOLS KB-F54 blower (good); (20) round  
bales 1st-cutting mixed alf. & broome (5x6).

SHAYLOR AUCTIONEERS  
515 Elmira St., Troy, PA 16947  
Professional Auctioneers • Licensed • Bonded \$33L  
Ph Bob Shaylor 717-297-3278  
Bob Garrison 717-297-3873

## ADVANCE NOTICE ANNUAL FALL CONSIGNMENT AUCTION

SAT., SEPT. 30, 1995

AT 9:00 A.M. AT

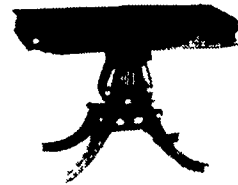
ISENNOCK AUCTIONS,  
NEW PARK, PA

We need Tractors, Farm Machinery, Trucks,  
Trailers, Bldg. Materials & Supplies, Lawn &  
Garden/Landscape Equipment, All Types of  
Tools & Related. NO Junk, Tires, Chemicals &  
Household. Contact office by FRIDAY, 9/08 to  
get your items advertised.



410-557-8052  
717-993-2564  
Lic. #AU2862-E

## LITTLE HAP'S AUCTION



Sun., September 3,  
2 P.M.

Ollie's Plaza, 6295 Rte. 22, Harrisburg, PA

Wood Box signed "Jacob Tice, Berks Co."

Porcelain Top Table. 1 Drawer Pine Dry Sink

1920's Unique Wooden 2 Man Sale Boat. Dove-

tailed Woodbox, Mahog. Foyer Harp Table, Glass

Door Bookcase, Early Oak Candy Showcase,

Small Pine Corner Cupbd., Gentlemen's Chest,

Gov. Winthrop Desk - 4 Ball & Claw Feet. (4)

Blanket Chests, Walnut Tilt Top Table, Large

Oak "S" Roll Top Desk, Child's Church Benches,

Pie Safe, Wood Advertising Boxes, Mirrors, Cherry

45 Drawer Painted File Cabinet, Oak Triple

Mirror Vanity, 1950's Dining Room Suite, Music

Stands, 2 Mahogany, 1 Oak, Victorian Oak Rock-

ing Cradle, Pine Wash Stand, Game Table,

Primitive Bakers Cabinet Base, Metal Ice Box,

3 Kitchen Cabinets, One Oak, Large Philadel-

phia Butcher Block, 9 Piece Depression French

Style Dining Room Suite, Oak 1 Drawer Marble Top

Entry Hall Piece, Floor Model "Victrola", 1800's

Whiskey Barrel, Leather Rocking Chair

w/Ottoman, 3 Matching Mahogany Tables,

Primitive Shoe Rack, Child's Painted Green

Wood Toy Chest, 5 Cent Art Deco Pin Ball

Machine, Custom Wood Matchbox/Hotwheels

Showcases, Small Glass Candy Store Show-

case.

Collection of 40 + Quilts & Comforts - Hand

Sewn/Child's - 3 Little Pigs, Butterflies, Full

Size - Star, Flower Pots, Spool, Crazy, Etc., Two

Cent Punchboard, Banjo Clock, Crocks,

Stoneware, Jugs, Etc., Vargas 1943 Calendar,

20 + Pieces of Silver Plate, Brass Tire Pump, Pep-

si, Coke, Star Wars, James Bond Character

Glasses, Collector Plates, Bennington Ladies

Cuspidor, Buggy Blanket, Milk Bottle, Green-

walt, Manheim Pt., Art Glass, 50's China Set,

Mickey Mouse Items: Dolls, Clocks, Watches,

Books, Etc., 1951 Coke Calendar, Mixing Bowls,

Pocket Knives, 8' Wooden Airplane Propeller,

Collection of Horses, Hershey Macaroni Plastic

Radio, Other Plastic Radios, Banks, Wind-up

Toys, Early Cap Pistols, Gold Ladies Pocket

Watch, 50's Plastic Train-M.I.B., Victorian Wire

Mouse Trap, Oriental Pieces, Child's Schoenhut

1900 Piano, Ford Wheels, Sterling Pilot Wing,

Plastic Flight Wings, Barbie Wrist Watch, Adver-

tising Tins, Paper, Cast Iron, Etc., Angle Light,

Angle MFG. Co. N.Y., Large Iron Kettle with 3-

Leg Stand, Coca Cola Items, Hershey Chocolate

Milk Can, Paper Machete Advertising Snow-

man, Small Blue Porcelain Gas Stove, Pattern

Glass, Budweiser Cast Iron Sign, Sugar Tin Box,

Lunch Boxes, Dome Top Red Barn, Popeye

w/Thermos, Flexible Flyer Sled, Tin & Metal

Fire Trucks, 15 Pieces of Agate, Mickey Mantle

& Roger Maris Baseball Bats, Boy Scout

Items, Patches, Yo Yo, Badges, Uniform, Pocket

Etc., Toys, Chain Tin Bank, Victorian Book

Knife, 1962 HümmeIstown Bicentennial Items,

Celestial Saturn Lamp.

1964 Schwinn American Boy's Bicycle (Nice)

COINS: Silver Dollars, Canadian 5 5.00 Silver

Pieces, Book of Canadian Coins, Etc.

Terms: Cash or Good Checks

This Will be a Nice Sale!

John Golden #2584L

Phone: (717) 540-0339 or 652-3525

Air Condition & Food Available