

# LANCASTER COUNTY LIVESTOCK MARKET AUCTION

## Lancaster Livestock

LANCASTER, PA  
AUGUST 22, 1995

Cattle	Calves	Hogs	Sheep	Goats
958	60	153	252	149
819	34	252	244	155
736	68	511	613	310

**CATTLE:** Slaughter steers mostly steady; slaughter heifers steady; cows steady; bullocks and bulls fully steady. Supply included 69 percent slaughter steers, 11 percent slaughter heifers, 9 percent cows, and 11 percent bulls.

**SLAUGHTER STEERS:** High Choice and Prime 2-4 1175-1400 lb 64.85-66.50; Choice 2-3 1075-1475 lb 63.00-65.50; Select and low Choice 2-3 1100-1450 lb 60.00-63.50.

**HOLSTEINS:** High Choice and Prime 2-3 1200-1500 lb 57.00-58.85, couple 59.50-60.00; Choice 2-3 1200-1500 lb 54.25-57.25; few Select 1-3 1150-1350 lb 53.00-54.00.

**SLAUGHTER HEIFERS:** Choice 2-3 950-1225 lb 60.00-63.10; few High Choice and Prime 2-3 1200-1315 lb 63.50-65.00; Select 1-2 925-1200 lb 53.75-58.50.

**COWS:** LO DRESSING BULK HI DRESSING Breaking Utility and Commercial 2-4 38.00-41.00 41.00-42.50 Cutter and Boning Utility 1-3 35.00-36.50 36.50-39.00 39.00-40.50 Canner and low Cutter 1-2 32.00-34.00 34.00-36.50

**BULLOCKS:** Choice 2-3 980-1300 lb 52.25-56.50; Select 1-2 950-1200 lb 49.00-53.00.

**BULLS:** Yield grade 1 1200-2000 lb 48.00-55.00, few 56.00-61.00, individual 1630 lb 64.00; Yield grade 2 975-1350 lb 42.75-47.00.

**CALVES:** Vealers scarce; slaughter calves 3.00-5.00 lower.

Demand fair for Holstein bulls to return to farm.

**VEALERS:** High Good and low Choice 70-100 lb 25.00-3.00, couple 37.00-38.00.

**SLAUGHTER CALVES:** Good and Choice 300-400 lb 54.00-62.00, 400-475 lb 48.00-58.00.

**RETURNED TO FARM:** Few small frame 90-110 lb Holstein bulls 55.00-80.00.

**HOGS:** Barrows and gilts steady to 50 higher. US 1-2 220-260 lb 48.50-49.00 US 1-3 210-260 lb 47.00-48.25

**SOWS:** 2.00-3.00 higher. US 1-3 300-500 lb 25.00-30.00 500-650 lb 30.00-32.00

**BOARS:** All Weights 22.00-23.00

**SHEEP:** Slaughter lambs steady to 5.00 lower; slaughter ewes 5.00-8.00 higher. Supply included 60 percent slaughter lambs with the balance slaughter ewes.

**SLAUGHTER LAMBS:** Choice 1-3

## Vintage Livestock

PARADISE, PA  
AUGUST 22, 1995

Cattle	Calves	Sheep	Goats
774	1068	8	0
579	971	2	1
650	1088	3	0

**CATTLE... USDA ...** Supply included 45% slaughter steers and 51% cows ...sl. steers weak to .50 lower, instances 1.00 lower, sl. heifers, bullocks and bulls scarce, cows fully steady.

**SLAUGHTER STEERS:** Choice 2-3 few 4 1125/1480 lbs. 62.75-65.25, few 65.25-65.60, Choice and Prime 2-3 1175/1425 lbs. 65.00-66.00, few 66.00-67.00, Select and Low Choice 2-3 1050/1475 lbs. 59.75-63.25, Select 1-3 1050/1400 lbs. 55.00-60.00.

**HOLSTEINS:** one lot Choice 2-3 1280 lbs. 54.50, Select 1-2 1200/1300 lbs. 50.00-51.00.

**HEIFERS:** one lot Choice 2-3 1110 lbs. 58.75, Select 1-3 950/1100 lbs. 55.00-55.75.

**COWS:** Breaking Utility and Commercial 2-3 bulk 37.50-40.50, high dressing 40.50-42.50, Commercial 3-4 bulk 34.50-37.50, Cutter and Boning Utility 1-2 bulk 36.00-39.00, high dressing 39.50-41.00, Canner and Low Cutter 1-2 low dressing 30.50-33.50, bulk 34.00-36.50.

**BULLOCKS:** one Choice 1290 lbs. 55.00, Select 1-3 950/1100 lbs. 49.50-50.00.

**CALVES...Vealers steady.** Supply included 906 in graded sale of which 87% sold to return to farm.

**VEALERS:** High Good and Low Choice 80/105 lbs. 25.00-36.00, Standard and Low Good 60/75 lbs. 12.00-23.00.

**RETURNED TO FARM:** 20 head 120/125 lbs. Holstein bulls 92.00, 195 head 100/115 lbs. 102.00-120.00, 70 head 95 lbs. 88.00-90.00, 60 head 90/95 lbs. 68.00-72.00, 85 head 80/85 lbs. 31.00-40.00 and 20 head 70/75 lbs. 26.00, 15 head small frame 100/115 lbs. 75.00, 50 head 100/105 lbs. 45.00-53.00 and 155 head 80/95 lbs. 27.00-37.00; 32 head

80-110 lb 82.00-86.00, 60-80 lb 90.00-100.00, few 40-60 lb 95.00-110.00.

**SLAUGHTER EWES:** Choice 2-3 52.00-60.00; Utility and Good 1-3 45.00-52.00.

**GOATS:** All goats sold by the head. Billies: Large 88.00-105.00, few 105.00-120.00; Medium 70.00-85.00. Nannies: Medium and Large 50.00-65.00. Kids: Choice 35.00-42.00; Good 25.00-35.00.

## Lancaster Livestock Auction

Wednesday's market report has been discontinued until further notice because of insubstantial receipts.

## Lebanon Valley Livestock

Fredericksburg, PA  
Tuesday, Aug. 22, 1995

Report supplied by Auction

**STEBERS:** 24 SELECTS 1225-1360 LBS. 56.50-60.75. **HOLSTEIN CHOICE** 1315-1805 LBS. 54.75-58.75; **SELECT** 1220-1815 LBS. 52.00-53.50.

**COWS:** 149 HEAD. **BREAKING UTILITY AND COMMERCIAL** 40.00-43.00; **CUTTER AND BONING UTILITY** 38.00-41.00, **CANNER AND LOW CUTTER** 35.00-38.00, **SHELLS** 34.50 AND DOWN.

**BULLS:** 11 HEAD. **YG#1** 1150-1490 LBS. 44.75-48.50. **YG#2** 985-1150 LBS. 40.00-44.00.

**CALVES:** 145 HEAD. **STANDARD AND GOOD** 65-100 LBS. 25.00-32.00; **UTILITY** 45-70 LBS. 20.00-25.00; #1 **HOLSTEIN BULL CALVES** 90-105 LBS. 100.00-113.00; #2 **HOLSTEIN BULL CALVES** 85-100 LBS. 85.00-102.00; #1 **HOLSTEIN HEIFER CALVES** 90-105 LBS. 190.00-207.00; #2 **HOLSTEIN HEIFER CALVES** 85-95 LBS. 100.00-147.00; **BEEF CROSS BULL AND HEIFER CALVES** 85-105 LBS. 87.00-115.00.

**HOGS:** US#1&2 215-252 LBS. 48.75-51.00; #2&3 230-280 LBS. 45.50-48.50.

**SOWS:** YG#1&3 495-615 LBS. 33.00-35.00; YG#2&3 325-505 LBS. 25.00-28.50; **MEDIUM** 255-270 LBS. 27.00-27.50.

**BOARS:** SMALL 21.00.

**GOATS:** MEDIUM 89.00.

90/115 lbs. Holstein heifers 192.00-208.00, 25 head 80/85 lbs. 150.00 and 20 head 70/75 lbs. 60.00, 10 head small frame 90/100 lbs. 167.00, 10 head 80/85 lbs. 117.00 and 20 head 65/70 lbs. 40.00.

**SHEEP...MARKET NOT FULLY TESTED!**

**SLAUGHTER SHEEP:** few Utility and Good 1-3 16.00-27.00.

**GOATS...NO MARKET TEST!**

## LEBANON VALLEY LIVESTOCK MARKET, INC.

1 mile East of Fredericksburg along Rt. 22

PHONE  
JONESTOWN  
(717) 865-2881

Flea Market Auction every Tuesday at 12:30, Tools, Eggs, Produce, Etc. Buyers & Sellers Welcome

## New Holland Livestock

New Holland, Pa.

Thursday, Aug. 24, 1995

No Report Available From USDA  
No Report Supplied By Auction

## Lancaster County Weekly

LANCASTER, PA  
AUGUST 25, 1995

THIS WEEK	Cattle	Calves
	1732	834
LAST WEEK	2600	1500
LAST YEAR	2900	1765

**CATTLE:** Slaughter steers steady, high Choice and prime low Choice .25-.50 lower; Slaughter Heifers 1.25 higher; Cows steady to weak; Bullocks and Bulls steady. Supply include 57 percent slaughter steers, 7 percent slaughter heifers, 30 percent cows, 4 percent bulls, with the balance feeders.

**SLAUGHTER STEERS:** Choice 2-3 few 4 1125-1480 lb 62.75-66.50, few 67.50; high Choice and prime 2-4 1075-1475 lb 62.25-62.60; Choice 2 few 3 1050-1475 lb 62.75-66.75; select and low Choice 2-3 1025-1400 lbs 59.00-63.25; select 1-3 1050-1400 lb 55.00-63.50.

**HOLSTEINS:** Choice 2-3 1200-1500 lb 54.50-58.85; select 1-3 1200-1350 lb 50.00-54.00.

**SLAUGHTER HEIFERS:** Choice 2-3 925-1275 lb 60.00-62.00; select 1-3 925-1200 lb 55.00-55.75.

**COWS:** Breaking utility & commercial 2-3, bulk 37.25-40.50; commercial 3-4, bulk 36.50-40.50 cutter & boning utility 1-3, low dressing 30.00-35.50, bulk 36.00-38.50, high dressing 40.50-42.25, canner & low cutter 1-2, low dressing 31.50-36.50, bulk 34.00-36.50.

**BULLOCKS:** 980-1300 lb, Choice 52.25-56.50.

**BULLS:** Yield grade 1 1200-1900 lb 48.00-55.25, few 55.75-59.00 yield grade 2 1200-2065 lb 40.00-48.25.

**CALVES:** Vealers steady, slaughter calves 5.00 lower. Demand fair for Holstein bulls to return to farm, demand fair for Holstein Heifers to return to farm.

**VEALERS:** Good and Choice 175-250 lb. Standard and low Good 65-100 lb 12.00-25.00.

**SLAUGHTER CALVES:** Good and Choice 350-500 lb 55.00-65.00.

**RETURNED TO FARM:** Bulk 95-125 lb Holstein bulls 55.00-125.00 80-85 lb 82.00-86.00; small fram 90-115 lb 82.00-92.00, 100-115 lb 25.00.

# Farmland Trust Announces Picnic

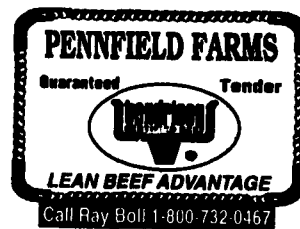
LANCASTER (Lancaster Co.) — Lancaster Farmland Trust will host its 4th Annual Membership Picnic in West Donegal Township on Saturday, Sept. 16 at the farm of Gene and Karen Garber.

The picnic is scheduled from 2 p.m. to 7 p.m. Activities for the day include a pig roast, a nature hike, horse-drawn carriage rides, tractor-drawn hayrides, an apple pie baking contest, and a children's drawing contest.

Western Lancaster County boasts the largest area of contiguously preserved farmland in Lancaster County, 11 farms totalling 1,250 acres — all observable from the hillside behind the Garber home. The day promises to be a celebration of the remarkable efforts toward farmland preservation in Lancaster County.

Tickets are available by calling the Farmland Trust office weekdays from 8:30 a.m. to 5 p.m. or by visiting the Park City Information Booth on several Saturdays, August 26, Sept. 2, or Sept. 9. Tickets are \$10 for adults, \$5 for children 9 and under, and free for children 2 and under.

For more information, please call the Trust office at (717) 293-0707.



## HAY, STRAW, & CORN — SALE —

Sale Starts Every Friday At 10 A.M.

## GREEN DRAGON MARKET & AUCTION

955 N. State St.  
Ephrata, Pa. (717) 738-1117  
1 mile North of Ephrata on N. State St.  
Out of State Buyers-Cash or Certified Check Only.



## B&R CATTLE CO.

RD 1, Marietta, PA 17547

Office Phone: (717) 653-8164

Specializing In Stockers & Feeders

JOHN BOWMAN  
ph. (717) 653-5728  
RON RANCK  
pb. (717) 656-9849

## LEBANON VALLEY LIVESTOCK MARKET, INC.

1 mile East of Fredericksburg along Rt. 22

PHONE  
JONESTOWN  
(717) 865-2881

Flea Market Auction every Tuesday at 12:30, Tools, Eggs, Produce, Etc. Buyers & Sellers Welcome

## QUALITY FEEDER CATTLE

Financing Available  
\* Fixed Interest Rates • Interest Due when Cattle Are Sold  
• No Monthly Payments

## SCARFF BROS. INC.

Cattle Dealers • Licensed & Bonded  
2300 Fallston Road • Fallston MD 21047

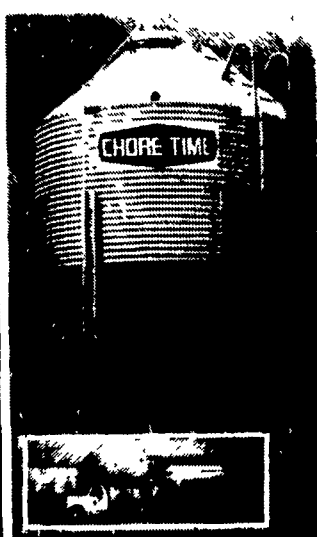
Lance N. Scarff  
Farm (410) 877-0370  
Fax (410) 877-7802

C. Howard Scarff, II  
Home (717) 445-4355  
Fax (717) 445-7237  
Mobile (717) 940-2633

W. Conly Scarff  
Home (410) 838-5883  
Mobile (410) 790-2650

Contract Feeding Programs • Marketing of Finished Cattle • Dairy Heifers

## Get more capacity and better service from Chore-Time's New Next Generation bin



High Capacity 40" roof (left) allows more storage and stays cleaner than conventional 30" roof (right)



Hydro-Shield™ Weather Guard prevents water from running down hopper



ACCESS PLUS™ permits easy clean out of the bin from the ground.

## Contracts Available

### Call For Information

- Broilers
- Turkey
- Breeder
- Hog Finishing

Call For Our Free Brochure  
"What Is Contract Production?"

Replace your bulbs and save electricity with  
SCREW IN FLUORESCENT LIGHTS

5-7-9 Watts 5.49 ea. 13 Watts 5.79 ea.

Light Bulbs 25 to 100 Watts 34¢ Ea.  
Brass Base - 5000 Hrs.

In Stock-36" & 48" Wide Kraft Paper

Made in USA

Northeast Agri Systems, Inc.

Rivway Business Park  
139A West Airport Road  
Lititz, PA 17543  
Ph (717) 569-2702  
1-800-673-2580

Delmarva State  
308 University Ave  
Federicksburg MD  
(Formerly Long Lumber)  
1-800-738-6361

## VINTAGE SALES STABLES, INC.

### SALE TUESDAYS

10:30 A.M.  
-SLAUGHTER CATTLE AUCTION-  
STEERS, BULLS, HEIFERS,  
COWS, FEEDER CATTLE

7:00 P.M.  
CALVES, SHEEP, GOATS  
•GET CALVES IN EARLY-  
OUR STATE GRADER  
STARTS AT 10:30 A.M.

Selling Feeders Every Tuesday  
At Approx. 1 PM

### FOR MORE INFORMATION CONTACT

L. ROBERT FRAME, SR., PRESIDENT  
BUS (717) 442-4181 BUS (717) 768-8204  
HOME (215) 458-8518  
IRWIN MARTIN, FIELD REP.  
(717) 733-7434  
KENNETH E. HERSHEY, FIELD REP.  
(717) 442-4874

TRUCKING SERVICE  
AVAIL-LOCAL &  
LONG DISTANCE  
(RT. 30, 10 MILES EAST  
OF LANCASTER IN  
PARADISE, PA)

