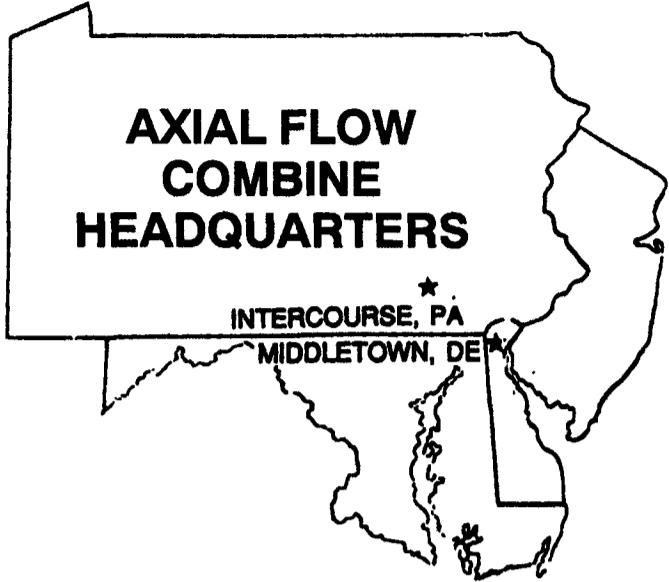


Best Buys in Used Equipment



IT'S TRUE!

NO INTEREST UNTIL JULY 1, 1996 on Used Combines Purchased at **HOOBER'S** before 8/31/95

If your combine will not make it through the Corn and Soybean harvest this Fall, now is the time to trade. Our selection of RECONDITIONED AXIAL FLOW COMBINES is excellent! There is no better time to buy. Check out our combines! Give us a call for complete details and low, preseason prices.

OTHER FINANCE OPTIONS	6.9% FIXED RATE FOR 60 MONTHS	OR	5.9% FIXED RATE FOR 48 MONTHS	OR	4.9% FIXED RATE FOR 36 MONTHS
-----------------------	-------------------------------	----	-------------------------------	----	-------------------------------

SUMMER COMBINE SALE

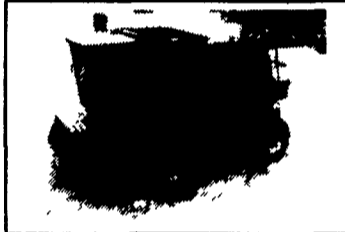
1680



CIH 1680 Combine, 1987 Yr, 1691 Hrs, Feeder Reverser, Hyd Reel For/Aft, AHHC, Feeder Cut Off Monitor, Chaff Spreader, Radio, Heat/AC (U8533)



CIH 1680 Combine, 1991 Yr, 1400 Hrs, 30 5x32 Specialty Rotor, Rock Trap, AHC, Feeder Cut Off, Reel To Ground, Hyd Reel For/AFT, 3 Spd Cyl, 20 8" Unload Auger, Vetteotef Chaff Spreader, 4 Wheel Drive (U8612)



CIH 1680 Combine, 1981 Yr, 1694 Hrs, Specialty Rotor, Rock Trap, Feeder Rev Monitor, AHC, Reel To Ground, Fore/Aft, 2 Speed Hydro, 4 WD (U8617)

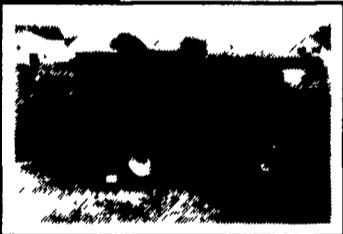


CIH 1680 Combine, 1987 Yr, 4700 Hrs, 30 5x32 Tires Ft, 15 4x16 1 Tires RR, Reeder Rev. Monitor, AHC, Reel To Gr, Hyd For/Aft, AM/FM (U9080)

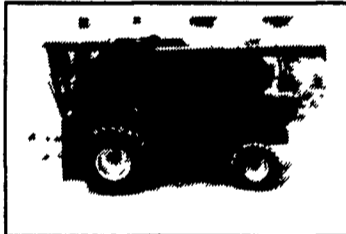


CIH 1680 Combine, 1990 Yr, 1900 Hrs, 30 5x32 Tires, Specialty Rotor, Feeder Rev, Monitor, AHC, Hyd Reel/For & Aft, 3rd Cyl Straw Chopper, Chaff Spreader Rock Trap (U9488)

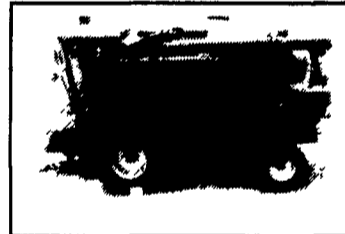
1660



CIH 1660 Combine, 1988 Yr, 2440 Hrs, Feeder Rev Monitor, AHC, Feeder Cut Off, Reel to Ground Sp Specialty Rotor, Hyd Reel For/AFT 3 Pd Cyl (U8741)

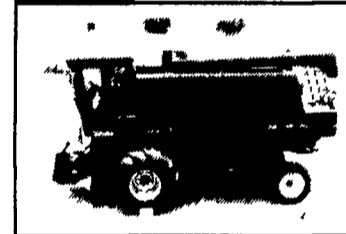


CIH 1660 Combine, 1990 Yr, 30 5x32 Tires, Specialty Rotor, Rock Trap, Monitor, AHC, Feeder Cutoff, Hyd Reel For/Aft, 3rd Cyl, 172" Unloading Auger, AM/FM Radio (U8631)

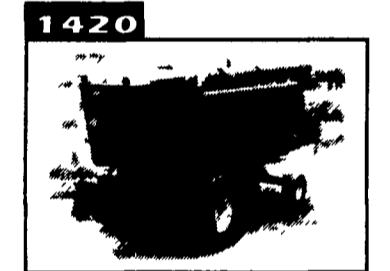


CIH 1660 Combine, 1990 Yr, 1 900 Hrs, 30 5x32, Specialty Rotor, Rock Trap, Feeder Rev Monitor, AHC, Feeder Cutoff, Hyd Reel For/Aft 3rd Cyl 172" Unloading Auger, AM/FM (U9417)

1620

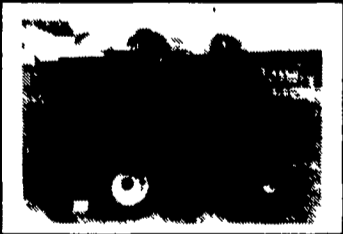


CIH 1620 Combine, 1988 Yr, 945 Hrs, 28Lx26 Tires, Rock Trap, Feeder Rev, AHC, Feeder Cutoff, Reel To Gr, AM/FM (U8440)



IH 1420 Combine, 1981 Yr, 2794 Hrs, 23 1x26 Tires, Feeder Cutoff, Monitor, AM/FM Radio (U8458)

1440



IH 1440 Combine, 1979 Yr (U8712)



IH 1440 Combine, 1979 Yr, 5875 Hrs, 28Lx26 Tires FT, 18 4x16 1 Tires RR, AHC, AM/FM (U8618)



IH 1440 Combine, 1982 Yr, 2685 Hrs, Rock Trap, Monitor, AHC, AM/FM Radio (U8371)

1480



IH 1480 Combine, 1980 Yr, 4049 Hrs, 30 5x32 Tires, AHHC, 3rd Hyd Cyl, AM/FM Radio, 4WD w/New 14 9x24 (U8130)

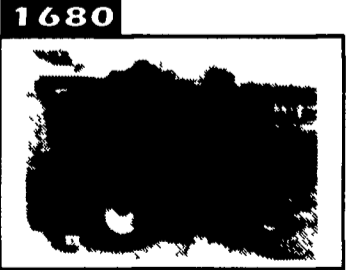


IH 1480 Combine, 1983 Yr, 3270 hrs, Monitor Auto Header Control, 3rd Cylinder, Staw Chopper, AM-FM Cassette Radio (4847D)

1460



IH 1460 Combine, 1979 Yr 7036 Hrs Specialty Rotor AHHC Feeder Cut Off AM/FM Radio (U9036)

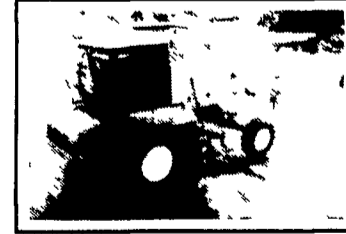


CIH 1680 Combine, 1989 Yr, 1229 hrs, 30 5-32 & 18 4-16 1 tires, Specialty Rotor, Feeder-Reverser, Monitor, Auto Header Control, Feeder Cutoff, Reel to Ground Speed Control, Hydr Reel Fore & Aft, Deluxe Seat, 3rd Cylinder, Inclined Delivery Auger, AM-FM Cassette Radio (U7880)

OTHERS



MF 550 Combine, 4R Wide Cornhead, 13' Platform (U8184)



JD 7720 Combine, 1980 Yr, 2276 Hrs, w/218 PF, 843 CH (U8895)



JD 7700 Combine, 1977 Yr, 4000 Hrs, Hydro, 23 1x26 Tires, AC/Heat (U8639)

All New & Used Products
Backed By
Hooper Parts & Service
(717)768-8231

HOOBER
C.B. HOOBER & SON INC.
INTERCOURSE, PA

CASE III