

# PRODUCE MARKETS

**Kutztown Produce Auction**  
 Fleetwood, PA  
 Auction days Mon., Tues., Thurs. Fri.,  
 9:30 a.m.  
 Sat., 9 a.m.  
 August 18, 19, 21, 22, 23, 24  
 Hay and Straw at 9:00 a.m. followed by  
 produce  
 Report Supplied by Auction  
 APPLES: 1.50-6.00 % BU.  
 BASIL: 2.00-2.50 % BU.  
 BEANS: GREEN 1.00-14.00 % BU.;  
 YELLOW 5.50-14.00 % BU.; LIMA

8.00-18.00 % BU.  
 BLACKBERRIES: 7.00-13.00 12 PINT  
 FLAT.  
 BRUSSEL SPROUTS: 1.00 BOX.  
 CABBAGE: 2.00-2.50 CRATE.  
 CANTALOPES: .30-1.60.  
 CUCUMBERS: 2.00-8.50 % BU.,  
 5.00-10.00 BU.  
 EGGS: .35-.85 DOZ.  
 EGGPLANT: 4.00-6.00 % BU.  
 ELDERBERRIES: 8.00 % BU.  
 GARLIC: 1.40-1.80 LB., 8.00-9.00  
 BRAIDED.  
 GRAPES: 4.00 BOX.  
 HONEYDEW: .40-1.30 EA.  
 LETTUCE: 3.25 % BU.

NECTARINES: 2.00-8.00 % BU.  
 OKRA: 5.00 % BU.  
 ONIONS: 6.50-10.00 % BU., 3.50-5.50  
 10 LBS.  
 PARSLEY: 2.00-3.50 % BU.  
 PEACHES: 1.50-18.00 % BU., 7.00 38  
 LBS.  
 PEARS: 4.00-9.50 % BU.  
 PEPPERS: 1.00-11.00 % BU.,  
 2.00-17.00 BU.; HOT 6.00-7.50 % BU.,  
 12.00-16.00 FLAT.  
 PICKLES: 4.50-7.50 % BU.  
 PLUMS: 2.00-23.00 8 QT. FLAT,  
 5.00-12.50 % BU.  
 POTATOES: 1.50-3.00 FLAT,  
 1.50-7.00 % BU., 3.50-4.75 50LBS., .50 5  
 LBS.  
 PUMPKINS: .10-.35.  
 RASPBERRIES: RED 9.00-18.00 12  
 PINT FLAT.  
 RED BEETS: .50 BUNCH; CUT  
 3.50-10.00 % BU.  
 SQUASH: YELLOW 1.00-7.00 % BU.,  
 GREEN 1.00-11.00 % BU., 2.50-6.00 BU.;  
 SUMMER 1.00-6.50 % BU.; BUTTER-  
 NUT 3.50-5.00 % BU.  
 SWEET CORN: .85-2.00 DOZ.,

3.00-12.00 BAG.  
 TOMATOES: CHERRY 1.00-7.00 12  
 PINT FLAT; YELLOW 3.00-11.50 %  
 BU.; SOILGROWN .75-1.00 10 LBS.,  
 1.00-9.50 25 LBS.  
 WATERMELON: .25-2.75 EACH;  
 SEEDLESS .30-3.10; YELLOW .45-2.10,  
 30.00-52.50 BIN.  
 CUT FLOWERS: 1.00-15.00 BUCKET,  
 20-50 BUNCH.  
 DRIED FLOWERS: 2.00-6.00 BOX.  
 GLADIOLAS: 8.00-14.00 BUCKET.  
 HANGING BASKETS: 4.50 EACH.  
 PERENNIALS: .50.  
 POTS AND PLANTERS: .30-1.80.  
 ASSORTED SHRUBS: 1.00-6.00  
 EACH.  
 MUMS: 1.50-2.40 EA.  
 SALE DAYS NEXT WEEK ARE MON-  
 DAY, TUESDAY, THURSDAY, FRI-  
 DAY BEGINNING AT 9:30, SATUR-  
 DAY AT 9 WITH HAY AND STRAW.

LY GOOD QUAL AND COND UNLESS  
 OTHERWISE STATED. CONTROLLED  
 ATMOSPHERE STORAGE Yellow  
 Granex GA 50 lb ctns jbo 28.00 NEW  
 CROP Yellow CO 50 lb sks jbo 7.50-8.00  
 mostly 8.00 ID/OR 50 lb sks jbo 7.50-8.00  
 WA 50 lb sks jbo 8.00 Globe Type NY 50  
 lb sks med 7.00-9.00 some 6.50 Grano  
 Type CA 50 lb sks jbo 7.50-9.00 mostly  
 7.50-8.50 rplcr sz 8.00-9.00 NM 50 lb sks  
 jbo 8.00-9.00 mostly 8.00-8.50 some 7.00  
 White TX 50 lb sks jbo 9.00-10.00 Red GA  
 25 lb sks jbo 8.00-9.00 NM 25 lb sks jbo  
 8.00-9.00 med 6.00 NY 25 lb sks jbo  
 8.00-10.00 mostly 9.00 med 6.00-8.00  
 some 5.00 WA 25 lb sks jbo 8.00-11.00  
 few 12.00

---POTATOES: MARKET ROUND  
 WHITES LOWER, OTHERS ABOUT  
 STEADY. US#1 SZ A WASHED OR  
 BRUSHED UNLESS OTHERWISE  
 STATED Russet Burbank ID bid 10 5-lb  
 sks non sz A 9.00-10.50 50 lb ctns 60s  
 13.00 70s 15.00 80s 15.00 NEW CROP  
 Russet Norkotah ID 50 lb ctns 70s  
 18.00-19.00 mostly 18.00 80s 18.00 90s  
 16.00 100s 14.00-15.00 120s 14.50 WA 50  
 lb ctns 70s 15.00 80s 15.00 90s  
 13.00-13.50 mostly 13.00 100s 11.00  
 Round Red MN 50 lb sks 8.50 sz B  
 11.00-12.00 ND 50 lb sks 7.50-8.00 sz B  
 11.50-12.00 NY 50 lb sks 7.00-8.00 Round  
 White CA 50 lb ctns 1" min 25.00 DE 50 lb  
 sks 3.50-5.00 mostly 4.00 lge 5.00-5.50  
 some 6.00 NJ 50 lb sks 4.00 lge 5.50 some  
 6.00 Yukon Gold WA 50 lb ctns 17.00

## Philadelphia Potato

PHILADELPHIA  
 AUGUST 24, 1995

\*NOTICE: NO REPORT WILL BE  
 ISSUED ON FRIDAY AUG. 25, 1995  
 DUE TO MARKET REPORTERS  
 ATTENDING THE NMNA  
 CONFERENCE.

ONIONS AND POTATOES  
 ---ONIONS DRY: MARKET YEL-  
 LOW JUMBO LOWER, OTHERS  
 ABOUT STEADY. US#1 OR GENERAL-

## Increase Your Income From Milk Sales

We are looking to increase our high quality milk supply in Chester, Berks and Lancaster Counties.



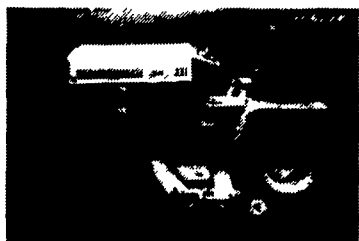
- No Coop Dues
- Solids Non Fat Premiums
- Quality Premiums
- Lower Hauling Rates & Stop Charges

From a proud neighborhood dairy in the 1920's to a modern manufacturing company of the 1990's, the Dietrich family-owned business continues to move forward. With the dedication of three generations and a heritage rich in experience and innovation, Dietrich's Milk Products faces the future with confidence. Give us a call and see what we are all about.

## Dietrich's Milk Products, Inc.

100 McKinley Avenue  
 Reading, PA

Field Representative  
 Daniel Vosburg • New Holland, PA  
 (717) 354-5562



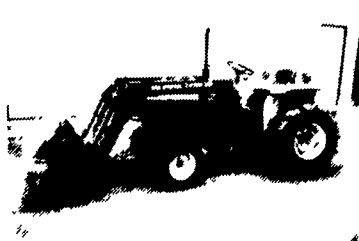
Cub Cadet 122 Gear 44" Cut  
 Good Cond  
 \$895<sup>00</sup>



John Deere 3 Cyl Water Cool  
 322 50" Low Hr Gd  
 \$4,200<sup>00</sup>



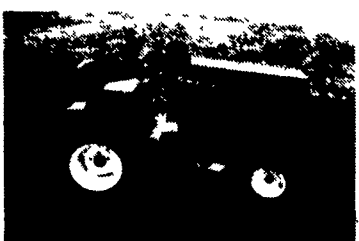
New White Tractor Clearance  
 Sale, Limit Supply  
 L12G 38" \$899<sup>00</sup>  
 LT13H 38" \$1,699<sup>00</sup>  
 LT18G 42" \$1,599<sup>00</sup>



Ford 1310 Diesel w/Loader  
 Recond  
 \$8,500<sup>00</sup>



Scags 12HP 48" Mower Hydro  
 Good Cond  
 \$1,800<sup>00</sup>



Ingersoll 222 Hydro  
 12HP 38" Cut Good Cond  
 \$1,295<sup>00</sup>



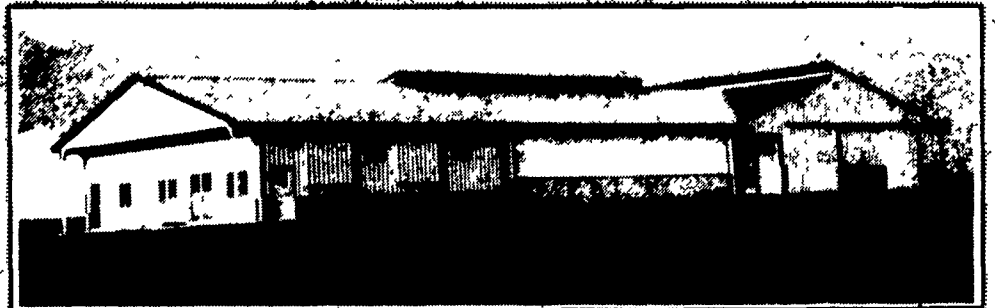
Ford - Case  
 As Is \$150<sup>00</sup> EA

## GREEN ACRE

Lawn - Garden  
 717-627-0547  
 171 Green Acre Rd.  
 Lititz, PA 17547  
 Hours:  
 Mon. & Fri. 7 to 8  
 Tues., Wed., Thurs. 7 to 5  
 Sat. 7 to Noon

## KEYSTONE CONCRETE PRODUCTS INC.

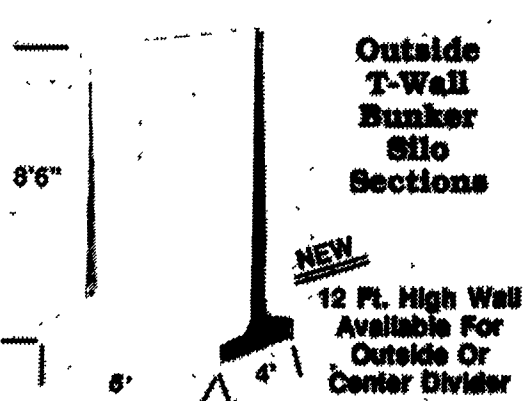
477 East Farmersville Rd.  
 New Holland, PA 17357  
 (717) 355-2961



Concrete Slatted Free Stall Barn



Long Core Cattle Waffle Slats



Outside T-Wall Bunker Silo Sections

NEW  
 12 Ft. High Wall  
 Available For  
 Outside Or  
 Center Divider



Slatted Beef Barn



End Sections Available For Feed Bunks