

Mercer Livestock

MERCER, PA
AUGUST 15, 1995

CATTLE 157... PDA ..Compared with last week's sale...steers 1.50 to 1.75 lower, cows steady to 3.25 higher.

STEERS: Choice 1025/1375 lbs. 60.50-65.75, Select 55.00-60.00, Standard 48.00-53.50.

HOLSTEINS: Choice 1225/1475 lbs. 57.50-60.50, one 63.50, Select 52.50-55.00, few Standard 50.00-52.00.

HEIFERS: few Choice 1150/1275 lbs. 60.00-64.00, few Select 56.00-60.25, few Standard 48.00-50.00.

COWS: couple Breaking Utility and Commercial 40.50-42.00, Cutter and Boning Utility 34.00-39.00, Canner and Low Cutter 29.25-33.75. Shells down to 26.00.

BULLOCKS: couple Select 920 & 1015 lbs. 53.25 & 56.00.

BULLS: few Yield Grade No. 1 1375/2000 lbs. 45.50-57.50, couple No. 2 1225 & 1870 lbs. 42.50 & 44.00.

FEEDER CATTLE: HEIFERS: few Large Frame No. 1 255 lbs. 66.00, few 200/400 lbs. 55.00-56.00; BULLS: few Large Frame No. 1 200/250 lbs. 71.00, few Medium Frame No. 1 275/425 lbs. 59.50-62.00, few Large Frame No. 2 225/375 lbs. 44.00-48.00.

CALVES 95...VEALERS: one Good 165 lbs. 67.50, Standard and Good 65/95 lbs. 25.00-39.00, Utility 55/80 lbs. 15.00-24.00.

FARM CALVES: No. 1 Holstein bulls 100/125 lbs. 80.00-122.00, 90/95 lbs. 70.00-90.00, few 80/85 lbs. 38.00-50.00, No. 2 90/110 lbs. 37.00-85.00; couple No. 1 Holstein heifers 125 lbs. 160.00 & 170.00, few No. 2 65/100 lbs. 55.00-125.00. Beef cross bulls and heifers 65/100 lbs. 60.00-85.00.

HOGS 80...Barrows and gilts 1.25 to 2.25 higher.

BARROWS AND GILTS: US 1-2 220/250 lbs. 49.00-51.25, US 1-3 200/270 lbs. 47.00-48.50, few 180/200 lbs. 45.00-46.00.

BOARS: few 235/650 lbs. 23.00-26.00. FEEDER PIGS 0...NO MARKET TEST!

SHEEP 14...SLAUGHTER LAMBS: few Choice 95/115 lbs. 80.00-82.00, Good and Choice 60/75 lbs. 49.00-52.00.

SLAUGHTER SHEEP: couple 12.00.

GOATS 6...One Large 30.00, one Medium 30.00, few Small 21.00-33.00. --- per head.

Carlisle Livestock Market

Carlisle, Pa.

Tuesday, August 18, 1995

Report Supplied by Auction

SLAUGHTER CATTLE: STEERS SELECT AND CHOICE HOLSTEINS 50.25-60.00.

SLAUGHTER COWS: BREAKING UTILITY AND COMMERCIAL 38.00-40.00; CUTTER AND BONING UTILITY 36.00-40.00; CANNER AND LOW CUTTER 33.00-37.00; BIG MIDDLE 35.75-38.75; SHELLY 31.00 AND DOWN.

BULLS: 40.25-49.25. FEEDER CATTLE: STEERS 450-650 LBS. HOLSTEIN/DAIRY TYPES 49.00-54.00.

CALVES: VEALERS STANDARD AND GOOD 40-135 LBS. 35.00-60.00; CALVES RETURNING TO FARM, HOLSTEIN BULLS #1 95-125 LBS. 92.50-115.00; #2 95-135 LBS. 70.00-90.00; HOLSTEIN HEIFERS 85-115 LBS. 155.00-165.00; BEEF X BULLS 80-110 LBS. 80.00-100.00; BEEF X HEIFERS 80-100 LBS. 75.00-95.00.

SWINE: HOGS US#1-3 220-270 LBS. 47.00-47.50; US#2-3 44.00-46.00.

BOARS: ALL WEIGHTS 21.25-23.75. SOWS: US#1-3 300-600 LBS. 30.00-40.50.

FEEDER PIGS BY THE HEAD: 15-25 LBS. 10.00-15.00, 30-40 LBS. 18.00-27.00.

GOATS: BY THE HEAD, LARGE BILLIES AND NANNIES 67.50-130.00; FLESHY KIDS 35.00-55.00; SMALL 20.00-33.00.

LAMBS: GOOD AND CHOICE 95-125 LBS. 68.00-82.00.

SHEEP AND YEARLINGS: ALL WEIGHTS 17.00-55.00.

SALE EVERY TUES. 5:55 P.M. FOR

PRODUCE, RABBITS, POULTRY AND EGGS, 7 P.M. FOR LIVESTOCK.

NEXT SPECIAL FEEDER CATTLE SALES TUES., SEPT. 15 AND 19.

THE AUGUST STATE GRADED FEEDER PIG SALES WILL BE FRIDAY, AUG. 25.

NEXT SPECIAL MONTHLY FED CATTLE SALE TUES., SEPT. 12. EARLYBIRD PENS CLOSE EVERY TUES. AT 2 P.M.

ESTIMATED BASE PRICE AT THE PLANT FOR WED., AUG. 16 WAS 49.25.

Eighty-Four Livestock

Eighty-Four, Pa.

Monday, August 14, 1995

Report Supplied by Auction

CATTLE: 225. (PDA) COMPARED WITH LAST WEEK'S SALE...COWS STEADY TO 4.00 LOWER, BULLS STEADY TO 2.00 LOWER.

STEERS: FEW SELECT 51.00-53.00. HEIFERS: FEW CHOICE 900-1300 LBS. 44.50-48.00, SELECT 39.00-44.00, FEW STANDARD 34.00-36.00.

COWS: BREAKING UTILITY AND COMMERCIAL 34.00-37.00, CUTTER AND BONING UTILITY 31.00-33.50, CANNER AND LOW CUTTER

26.00-30.50; SHELLS DOWN TO 20.00.

BULLOCKS: FEW SELECT 42.50-46.00.

BULLS: YG#1 1200-1900 LBS. 46.50-50.00, #2 1200-1850 LBS. 43.50-45.00.

FEEDER CATTLE: STEERS FEW MEDIUM AND LARGE FRAME #1 600-855 LBS. 51.00-61.00, MEDIUM AND LARGE FRAME #2 475-800 LBS. 40.00-50.00; HEIFERS MEDIUM AND LARGE FRAME #1 350-800 LBS. 45.00-59.50, MEDIUM AND LARGE FRAME #2 400-900 LBS. 35.00-51.00; BULLS MEDIUM AND LARGE FRAME #1 425-600 LBS. 45.00-60.00, MEDIUM AND LARGE FRAME #2 400-800 LBS. 41.00-49.50.

CALVES 164...VEALERS STEADY. VEALERS CHOICE 150-300 LBS. 35.00-50.00, STANDARD AND GOOD 90-110 LBS. 32.50-38.00, 60-85 LBS. 27.50-34.00, UTILITY 60-75 LBS. 17.50-25.00.

FARM CALVES: #1 HOLSTEIN BULLS 90-120 LBS. 70.00-102.50, #2 70-120 LBS. 42.50-67.50; #1 HOLSTEIN HEIFERS 95-115 LBS. 155.00-170.00, FEW #2 60-130 LBS. 55.00-107.00; BEEF X BULLS AND HEIFERS 85-195 LBS. 65.00-100.00.

HOGS 40...BARROWS AND GILTS STEADY. BARROWS AND GILTS US#1-3 220-250 LBS. 47.00-48.50, LOT 215 LBS. AT 42.00.

BOARS: 95-135 LBS. 39.50-41.50. FEEDER PIGS 9...US#1-3 55-70 LBS. 29.00-42.00 PER HEAD.

SHEEP 192...SLAUGHTER LAMBS 8.00 HIGHER. SLAUGHTER LAMBS HIGH CHOICE AND PRIME 90-125 LBS. 95.00-108.00, CHOICE 90-110 LBS. 90.00-94.00, 60-75 LBS. 75.00-80.50, GOOD AND CHOICE 85-125 LBS. 61.50-70.00.

SLAUGHTER SHEEP: 24.00-44.00. FEEDER LAMBS: GOOD AND CHOICE 45-75 LBS. 50.00-70.00.

GOATS 4...ONE LARGE AT 48.00, THREE MEDIUM AT 20.00 PER HEAD.

Dewart Livestock

Dewart, Pa.

Monday, August 14, 1995

Report Supplied by PDA

STEERS: 53.00-62.50. HEIFERS: TOO FEW TO QUOTE. GOOD COWS: 33.00-41.00. CANNERS AND CUTTERS 28.00-33.00.

BULLS: 40.00-45.25. VEAL 90-190 LBS. 90.00-162.50, 70-90 LBS. 30.00-90.00.

HOGS: 42.00-45.25. SOWS: 28.00-34.75. FEEDER PIGS: 12.00-18.00 PER HEAD.

Looking For Quality Feeder Cattle...



Call Willier, Incorporated (717) 626-6845

Lititz, PA

GOOD'S LIVESTOCK, INC.



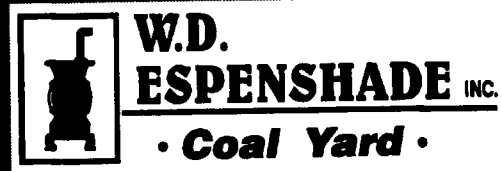
- Market Hogs
- Sows • Boars
- Cull Pigs

NOW RECEIVING: Mon. 6:30-11 am Fri. 6:30-10 am

All Market Hogs Received At Station Must Be Scheduled One Week In Advance



Rt. 897 - 1 mile North of Fivepointville (717) 445-5776 • FAX (717) 445-6099



Place your order now!
380 W. Bainbridge St.
Elizabethtown, PA.
1-800-373-9704



Diffenbach Auction Inc.

100 West Jackson Street • New Holland, Pennsylvania 17557
Office: (717) 355-7253 • FAX: (717) 355-9547

HAY & GRAIN SALE EVERY MONDAY - 10:00 A.M.

WED. SEPT. 6	WINROSS TRUCKS & TOYS	6:30 PM
FRI. SEPT. 8	FARM EQUIP., TRACTORS & FARM SUPPLIES	9:00 AM
TUES. SEPT. 19	QUILT, CRAFT & BUGGIES	9:00 AM
WED SEPT 20	QUILT & CRAFT	9:00 AM

EQUIPPED FOR AN AUCTION AT YOUR PLACE OR OURS
ALAN DIFFENBACH AUCT. - AU2258-L

NEED TO CUT THE FEED BILL?

DAIRY BLEND COMPLETE AND CONCENTRATE FEEDS

COMPLETE FEEDS

CONCENTRATE FEEDS

#79514 Dairy Blend Flakes 14% All Natural \$164²²

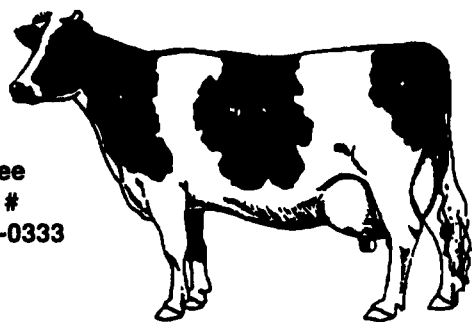
#79516 Dairy Blend Flakes 16% All Natural \$166²³

#79520 Dairy Blend Flakes 20% All Natural \$185²²

#51232 32% All Natural Protein Pellets \$218²¹

#51238 38% All Natural Protein Pellets \$246²²

#50734 34% All Natural Protein Pellets \$255²²



Toll Free Order # 1-800-995-0333

Bulk Feed Available in 1 to 24 Ton Loads

Feed prices for week of August 21 and Subject to Change Weekly with Grain Market Includes 8 ton volume discount and cash discount of 2 1/4% due 15th following month. Deduct additional \$3.00 per ton if paid in 10 days



pennfield feeds

1-800-732-0467

Quality - Value - Service

NEW HOLLAND SALES STABLES INC. THE ACTION AUCTION

Livestock Is Our Only Business

MONDAY



SLAUGHTER HOGS EARLY BIRD HOG SALE 7:30 A.M.

Sell Your Hogs At New Holland Sales Stables, Inc See them weighed sold and pickup your check



10:00 A.M. HORSES MULES



1:30 P.M. BEEF SALE 2:30 P.M. SHEEP, GOATS & CALVES



WEDNESDAY

HEIFER SALE 11:00 A.M. COW SALE 12:00 NOON



We have the usual run of 50 to 100 Heifers, all ages Loads of fresh cows and springers from our regular shippers. Also some local fresh cows and springers

THURSDAY

Beef Auction 10:00 A.M.



BULLS, STEERS, BEEF COWS



1:00 P.M. STOCKERS & FEEDERS



11:00 A.M. GOATS SHEEP CALVES



1:30 P.M. FEEDER PIG SALE



Pigs are accepted after 6:30 A.M. State graded from 8 to 12 Dairy Barn and Feeder Pig Barn are cleaned and disinfected weekly for your protection

NEW HOLLAND SALES STABLES, INC.

12 Miles East of Lancaster Off Route 23, New Holland, Penna.

MANAGERS

Norman & David Kolb- 717-597-5538

Field Representatives

Luke Eberly - 215-267-6608 738-1665

Homer Eberly - 215-267-3047

Ron Ranck - 717-656-9849

Sale Barn Officer Manager

Roger Floyd - 717-354-4341

FAX #717-355-0706

Order Barn:

Paul Good - 215-445-6882