

We have several farms for development.
We need farm listings - especially dairy farms.
CALL TODAY FOR FREE INTERVIEW

MAHLON OBERHOLTZER AGENCY
Your Central PA Farm Broker
Smoketown, PA 17576 (Lanc. Co.)
717-392-1177



104 ACRES IN SOUTHERN LEBANON COUNTY
55x105 barn designed for grain or implement storage. 2 grain dryers (7,000 & 12,000 bushels), 1,800 bushel storage bin - plus 3 bdrm. dwelling, paved drive & area around buildings and an excellent water supply. Check the soybean crop for yourself! **\$425,000.**

119 ACRES IN SOUTH LEBANON TWP.
2 tracts (57.6 & 61 acres) of raw land zoned industrial, currently used for farming. Limestone soil, stream on property, public sewer on boundary and the possibility of an agricultural preserve. **\$5,000/acre**

6 LARGE PARCELS
Located within an agricultural preservation area in S. Annville Twp., sizes range from 5.2 to 12.5 acres. Each parcel offers individuality and a spectacular view. **Prices start @ \$84,500.**

2 COUNTRY LOTS IN RAPHO TWP., LANCASTER CO.
1.5 acres each, bordering farmland, already septic approved and ready for building. Lovely country setting but still conveniently close to schools & shopping. An easy commute to Lanc., Phila., or Harris. **\$45,000/\$47,000**

WOODED LOT IN SOUTHERN LEBANON COUNTY
Lovely 1+ acre lot septic approved for a standard system. You can choose your own builder or call us for an excellent package deal. Lot alone offered at **@ \$39,900.**

* For Additional Details, Please Call *

PENN REALTY, LTD.

(717)964-3800
OR
(800)376-2626

CALL COLDWELL BANKER

CENTRAL PENNSYLVANIA FARMS/FARMETTES
BEDFORD CO. - 200A. OPERATING DAIRY FARM - \$475,000

- * 156 tillable, 28 pasture, 1 woodland, 5 site and misc
- * Sound 2 story home; bank barn with free stall additions (106 stalls)
- * Double 4 milking parlor, 4 silos, liquid manure system
- * Large pole type implement shed-shop
- * Trailer with a bedroom addition
- * Good soils, nice setting along secondary road, large well stocked pond

CENTRE CO. - 31A. DAIRY FARM - \$195,000

- * 25 open, 2 wooded, 2 acres site
- * 2 story stone house, 60 stall tie stall dairy barn
- * 42'x64' pole building, 20'x70' Star sealed silo (bottom unloader).
- * Nice, well cared for property, good second building site

CLEARFIELD CO. - 208 ACRE BEEF FARM - \$335,000

- * 120 tillable, 26 pasture, 53 woodland, 9 acres site & misc
- * 2 story 3 bedroom brick home, 2 bedroom tenant house
- * Large bank barn, 3 bay garage, 20'x30' Harvestore silo
- * Second 2 story barn, implement shed
- * Nice topography, small pond
- * Attractive, well maintained property, excellent for beef

MIFFLIN CO. - 140 ACRE GENERAL/LIVESTOCK FARM - \$260,000

- * 115 tillable, 3 pasture, 15 acres site & misc
- * Steel quonset building, pole shed, 2 silos, feed bunk
- * Large paved barnyard
- * Nice laying, productive land, spring water
- * Level area suitable for use as a runway

CALL TOLL FREE FOR DETAILED BROCHURES WITH PICTURES

BUYING OR SELLING? BE SURE TO VISIT OUR AG PROGRESS DAYS DISPLAY AT THE CORNER OF MAIN AND WEST 5TH STREETS



UNIVERSITY REALTY
126 E. Foster Ave., State College, PA 16801
800-669-4925 Toll Free

Northern Northumberland Co.
69 Acre dairy and produce farm. First class tillable soil, 26 stall bank barn with room to hang tobacco, silo and bulk tank, 2 story house w/ 1 1/2 baths. Well established produce market **\$239,000**

Northern Snyder County
50 Acres of wooded & open land next to PA Fish Commission's Walker Lake
40 Acre Farm, 1 1/2 Story, 4 BR w/additional outbuildings. **\$179,000**

Harry Zimmerman
717-299-4885; 1-800-472-2641



1271 Litz Pike
Lancaster, PA 17601

CENTRAL PENNSYLVANIA FARMS, FARMETTES, LAND AND CABINS

Our Farm and Land Division currently has many farms, farmettes, land parcels, and cabins available in central Pennsylvania. We would be happy to send you a free farm and farmette list and/or rural land and cabin list.

See the June 24th or July 29th issues for a complete farm and farmette inventory

Farm and Land Division

Fred Strouse (814) 364-1705
Mel Rockey (814) 466-6688
Terry Gingham (814) 364-1169
Jim Harpster (814) 238-2525



245 S. Allen St.,
State College, PA 16801
(814) 234-4000
1-800-876-3395

BERKS COUNTY



170 acre dairy farm, home of champion Holsteins. Next to Industrial Park. Excellent investment opportunity.

CENTRE COUNTY, PENNS VALLEY



313 acres, 250 acres tillable. Three houses, dairy barn w/ 118 stalls, 3 silos, 2,000 gal. bulk tank, plus many other buildings.

CLINTON COUNTY, SUGAR VALLEY



131 acre dairy farm with 44 stalls. Excellent buildings, good stream.

MONTOUR COUNTY



90 acre Amish equipped dairy farm with 50 stanchions. 50 more acres available. Double house, 3 silos, many other buildings.

BRUSH VALLEY, MADISONBURG

12.9 acre Amish equipped farm, 3 greenhouses, excellent house & barn. Good working or retirement farm.

MONTOUR COUNTY

Danville area, 142 acre hog farm. Very good buildings, Call for information

LANCASTER COUNTY

2 miles west of New Holland, 35 acre Amish equipped produce farm, 6 bedroom house, 10,000 SF greenhouse

OLEY VALLEY, BERKS COUNTY

158 acres along Rt 662. Wonderful land, buildings in poor condition

INDIANA COUNTY

565 acres, 350 acres tillable, 4 houses, good outbuildings, nearly level land in high state of cultivation, \$1,600 per acre

Call

Hiram Hershey, Broker
Thomas Hershey, Realtor associate
HERSHEY FARM AGENCY, INC.
REALTORS
1-800-880-3831

Lycoming Co.- 28A w/ lovely country setting, mostly level, tillable, paved road frontage, old barn, good views, perced. 717/946-4514.

Thinking of marketing your farm?
You need to call on the experience of Harry Zimmerman for professional confidential service.
Specializing in tax deferred sales.
TOWN & COUNTRY REALTY
717-299-4885 OFFICE
717-355-2048 HOME
1-800-472-2641
717-575-2542 CAR PHONE

NEW LISTING

Operating Dairy, 300 acres mostly tillable. Barn milks 70, with addition for heifers and Calves. 2" pipeline, 700 gal. Mueller bulk tank, enclosed spreader room, 18x70 silo with unloader. Nice 4 bay shop, and several other outbuildings. Very nice 3 bedroom 1 1/2 bath Ranch style home, with all new wall to wall carpet, and 2 car attached garage. Only 1 1/2 miles from the St. Lawrence River!! **Asking \$149,000.**
Or May be purchased Stocked & Equipped. With 100 head of holsteins, 52 milking, 5 Tractors (including a 130 hp 4x4), 12' Self prop. Haybine, Payloader, 2 balers, and much more. **Asking only \$289,000.**
260 acres, 180 tillable, State of the Art Barn with 89 comfort Stalls, and 2 Maternity pens all with rubber mats. 2" Bou-Matic pipeline with 8 units, 1,500 gal Dairy Kool bulk tank. Dual Compressors and Vacuum pumps. Heated Office with full Bath. 3 silos with unloaders, 10 ton grain bin. 36x48 heated and insulated drive through shop. Large 4 bedroom 1 bath home. Farm sits on a very quiet back road. **Asking \$199,000.**

20 other Dairy, Beef, and Hobby Farms from \$67,500 to \$149,000.

RUSSEL J. FINLEY
BROKER - OWNER

24 Hour Phone #

Finley Real Estate



315-393-6325

Rural Properties, Farms
Residential, Business
207 Montgomery St. •
Ogdensburg, NY 13669

118 Ac. Dairy Farm 120 Free Stall
135 Ac. Oley Valley Farm, 132 Ac. Tillable
93 Ac. Wooded & Open land, Old Barn & Duplex House
11 Ac. 2 Houses (need repair), barn & other bldgs.
25 Ac. Gentleman's Farm, Morgantown Area
2 Executive Farms and good possibility for development
A couple of Industrial Sites.

RICH BRANDT FARM REAL ESTATE

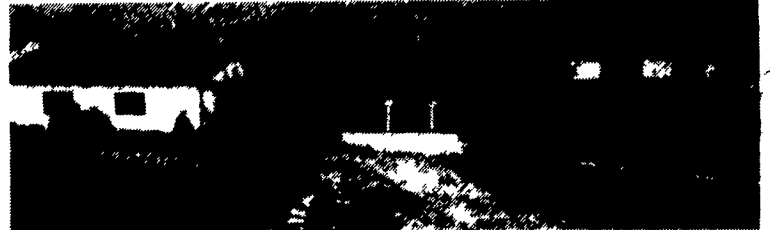
2033 Penn Avenue, West Lawn, Reading, PA 19609

1-800-899-9865

(717) 274-3622 - Office - (610) 678-1122

FAX: 610-678-8158

UPPER FRANKLIN COUNTY



Dir: North on Rt 75 approx. 10 miles from the Willow Hill ext of the PA Turnpike.

This quality brick 2 story has everything you need for economical living today. There are 4 BR's, 3 1/2 baths. 7 garages, and 16.5 acres of land for produce, sheep, horses, or maybe Ostrich. This place is nestled among the Amish area of Upper Franklin County, along Rt. 75.

We have a lot of interest subject to other things/ be the first to agree to buy and be in as soon as you want. Priced at \$225,900 for a quick change of ownership.

Sanford G. Leaman, Realtor

1-800-836-8113

DEMERE REALTY

Rte. 3 Box 91H

Little Falls, NY 13365

Phone & Fax (315) 823-0288

George Demere, Broker



#52 - 500 A. dairy farm w/280 tillable - 76x100 ft. 2-story barn w/130 ties on 2 in. pipeline - 2 bulk tanks & 8 units - also 52x120 ft. heifer barn for 117 head - 40x80 ft. mach. shed, lg. insulated shop, 4 lg. silos w/unloaders & V.G. 14 rm. colonial home - 12 yrs. old - also 12x70 ft. mobile home - **\$275,000 - possible owner financing.**

#45 - NEW LISTING - 340 A. dairy farm w/219 tillable - free stall barn for 130 cows w/add't for 35 heifers & 20 calves, double-six M.P., two bulk tanks, 2 lg. silos w/unloaders, 120x50 ft. bunk silo & 45 day manure storage facility - also 10 rm. stone house in good cond. - **\$325,000.**

#46 - NEW LISTING - ATTENTION LAND DEVELOPERS - 120 A. with 4751 ft. of road frontage on two roads makes this parcel a great opportunity for development - **\$66,000.**

#171 - 516 A. dairy farm w/72 on pipeline - heifer facilities for 130 head, 2 lg. mach. sheds, 3 lg. silos & lovely 8 yr. old ranch home - **\$400,000 REDUCED TO \$350,000 - or 200 A. for \$198,000.**

#238 - 157 A. dairy farm w/87 tillable - 50 cows on 2 in. pipeline w/4 units, 800 gal. B.T., B-cleaner w/liquid pump & 50x32 ft. add't for 14 heifers & 2 pens - 2 concrete silos & 1 Harvestore w/unloaders - V.G. 9 rm. home - **\$165,000.**

#58 - A NICE NEAT FAMILY FARM - 124 A. w/60 tillable - 85x36 ft. barn w/50 cows on 2" pipeline w/4 units & 600 gal. B.T., enclosed manure shed. 52x40 ft. mach. shed w/2 stall garage, two 16x40 ft. silos w/unloaders & V. good 8 rm. home w/garage - **\$168,000.**

FREE - FARM LISTS AVAILABLE