



6x6 Oshkosh

4000 gal. vacuum tank, hydraulic drive pump, 285 hp Mack engine, 10 speed main transmission +3 speed aux., wide rubber.

717-464-5131

8000 Gal. Freuhauf Semi Tanker Set Up For Liquid Waste, Tapered Bottom, 6" Rear and Center Load & Unload
717-464-5131

C.P. MARTIN FORD, INC.

RT. 272 ACROSS FROM THE GREEN DRAGON SIGN IN EPHRATA-THE HEART OF LANCASTER COUNTY

733-6644 OR 1-800-258-2677



'94 FORD F150 4X4 Short Bed, AT, V8 (P443)



'89 FORD F150 4x4 XLT V8, AT, AC, Matching Cap (6161A)



'94 FORD F150 4X4 XLT, 351 V8, Loaded (P445)



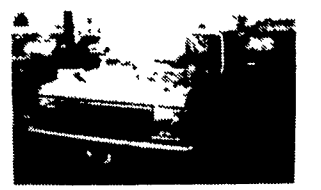
'91 FORD E150 4x2, XLT Lariat, 5-Speed, V8, AC, Loaded (P440)



'94 FORD F150 4X4 5-Speed, Super-Cab, 17,000 Miles, Loaded, AC (P447)



'93 TOYOTA EXTRA CAB 4x4 5-SPD., AC, V6, Red (6226A)



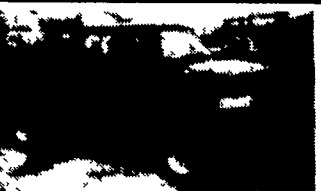
'90 FORD F150 4x4 XLT, AT, AC, 351, V8 (6233B)



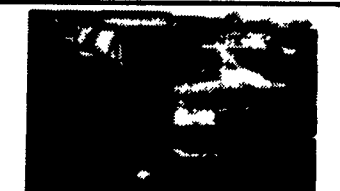
'92 GMC SLE Loaded, V8, AT, AC, 4x2 (P441)



'93 CHEV K2500 4x4 Silverado, 5-Spd., AC, Loaded (P444)



'92 FORD F150 "NITE" 4x4 Loaded, V8, AT, AC (P438)



'92 FORD F150 4X4 XLT Super Cab, AT, AC, 34,000 Miles, Loaded (P433)



'87 ISUZU TROOPER 5 Speed, AC, 70,000 Mi. (6208A)

USED TRUCKS



'95 Chev. 3500 4x4, 454 FI, 5 spd, ps, pb, ac, cruise, tilt wheel, sliding rear window, am & fm stereo cass, 10,000 miles local vehicle

\$21,400



'94 Chev Crewcab 3500, Silverado, 350 FI 5 spd, ps, pb, ac, pw, pdl, cruise tiltwheel, am & fm stereo cass. two tone blue & silver, 34,000

\$20,800



'91 Ford F-250 XLT Lariat, 8600 GVW 4x4, 351 FI, 5 spd ps, pb, ac, pw, pdl, cruise, tiltwheel, rear sliding window, dual tanks, two tone, maroon & silver, local one owner, 63,000 miles

\$14,500



'94 Chev 3500 4x4 454 FI., 4:10 Rears, PS, PB, AM-FM Stereo, 3,900 Miles, Red

\$19,400

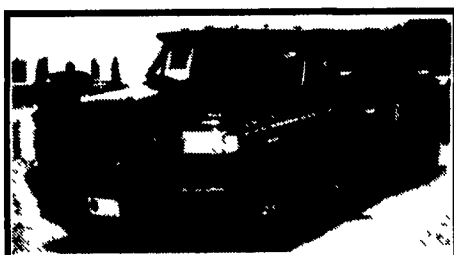
Financing Available

MARTIN'S AUTO SALES
 1025 W. Main St., New Holland, PA 17557
(717) 656-6621

Mark Vills • Pickups • Broncos • Stake Body • Crew Cabs

Contours • Aspires • Diesel Pickups • Mustangs • Thunderbirds

Explorers • Grand Marquis • XLTs • Custom Vans

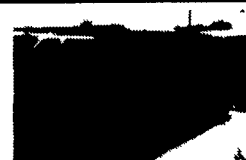


Great Selection F250's & F350's Supercab & Crew Cab

Power-Stroke Diesels In Stock



MERCURY VILLAGER
 10 to Choose From
 STARTING AT **\$20,000**



FORD EXPLORERS
 20 to Choose From
 STARTING AT **\$19,000**



FORD WINDSTAR
 10 to Choose From
 STARTING AT **\$19,000**



'94 FORD EXPLORER V6, Auto, Loaded, Eddie Bauer #PR2335
 Was \$22,999 NOW **\$21,799**



'94 FORD F250 4X4 351, V8, Auto, Only 9,000 Miles #P2344
 Was \$20,999 NOW **\$20,499**



'93 FORD AEROSTAR V6, Auto, XL Package, Only 30,000 Miles #P2248
 Was \$14,499 NOW **\$13,499**



'94 FORD EXPLORER V6, 5 Spd., Air, Sport Pck. #P2263
 Was \$19,999 NOW **\$17,999**



'95 FORD F350 SUPER CAB 460, V8, Automatic, XLT, Air, Wheels #7161
 WAS \$27,216 NOW **\$24,999**



'95 FORD F350 DUMP TRUCK Power Stroke Diesel, Automatic #7140
 Was \$34,357 NOW **\$29,999**



'95 FORD F350 Chassis Cab 460, 5 Speed, XLT Package #7057
 Was \$25,366 NOW **\$22,499**



'95 FORD F250 4x4 Power Stroke Diesel, Automatic, Loaded #7235
 Was \$29,451 NOW **\$26,999**



'95 FORD F250 4x4 SUPERCAB 351, V8, Automatic, XLT, #7201
 Was \$28,520 NOW **\$26,199**



'95 FORD F250 4x4 Power Stroke Diesel, Auto, XLT #7158
 Was \$28,778 NOW **\$26,399**



'95 FORD F250 4x4 Power Stroke, Auto, XLT #7082
 Was \$29,245 NOW **\$26,799**

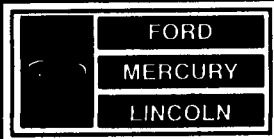


'95 FORD F150 4x4 SUPERCAB 302, V8, Auto, XLT #7212
 10 SUPERCABS TO CHOOSE FROM



'95 EDDIE BAUER EXPLORER Every Option Available Including Moonroof Was \$34,400
 *Special Of The Week NOW ONLY **\$29,999**

Unless the Sheehy Emblem is on Your Car or Truck... You Probably Paid Too Much!



SHEEHY LEBANON

-20th & CUMBERLAND STS. - RT. 422 WEST
 9-9 DAILY; 9-5 SATURDAY • SHEEHY HOTLINE (717) 272-7671 OR 533-5293

PARTS DEPT OPEN
 DAILY 8-5
 SAT. 8-12
 717-273-8168

Mystiques • Cougars • Continentals • Town Cars • 4x4s • Rangers