

INT. single axle w/hydro silage box w/beaters and fr conveyor, exc. con 717/529-2051.

Liquid manure spreader, Ford L9000, 350cum, 13spd, 6800gal tank, VG condition. Must sell, \$15,000. (717)463-2318.

Mack dump truck B67, runs good also Tonka tag-along, triaxle trailer, good condition, 20' bed, \$5,800 OBO. (215)654-9237.

Mack dump truck B67, runs good w/snowplow also Tonka tag-along, triaxle trailer, good condition, 20' bed, \$5,800 OBO. (215)654-9237.

New 6 1/2 x 14 7000 lbs. trailer w/slide under ramp, drop axle \$2000.; call for estimate for custom build trailers; 717/423-5181.

Ramsey electric truck winch, type 693916, 12V, 9,000 lbs, new, \$395. (717)872-5007.

Tag Along Trailer, Birmingham, 1980, 20-ton, 20' bed, tandem, \$3800. 717/354-3105.

TRUCK Mack MS200, 1986, Maryland inspected, \$6,000. 410-833-9091

Truck tires, all sizes, new and used. Good prices. 717-558-3740.

Wheels 16in. split rim dual Budd type 5 wheels, 6 traction tires, \$125. 717-258-0561.



# LEFEVER BROS. CHEVROLET CHEVY TRUCKS GEO.

YOUR DIRECT LINE TO GENUINE GM PARTS

## (800) 533-3837

When you call the number listed above, you'll reach our wholesale parts specialists, who can help you keep your GM repair work moving quickly.

Ask about:

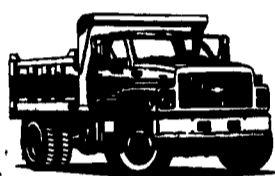
- Specializing in GM Medium Duty Trucks, Current and Obsolete.
- \$500,000 Parts Inventory.
- Parts Locator for Those Hard to Find Items.
- We Ship Anywhere, Local Delivery Available.
- Experienced, Knowledgeable Personnel.

Mon., Tues., Thurs., Fri.  
7:30 a.m.-4:30 p.m.  
Wed. 7:30 a.m.-8:30 p.m.  
Major Credit Cards Accepted

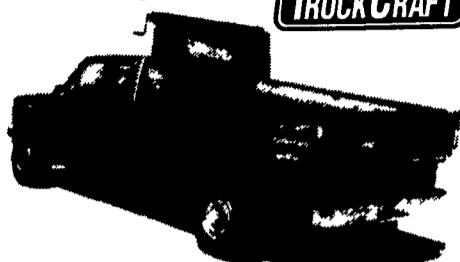
(717) 432-9697

Quality Dealer Since 1921  
406 U.S. Rt. 15, Dillsburg, PA 17019

**GM Goodwrench Service**



**Kodiak Chevy Trucks**  
**CAT DIESEL POWER**



**PICKUP INSERT DUMPER**  
For FREE brochure, call toll free 24 hr.  
1-800-755-3867

### R & R CAR AND TRUCK CENTER

1657 Rohrerstown Road, Lancaster, PA



**86 KENWORTH T600, TRI AXLE**  
22' Hewey Alum. Dump, NTC 400, 9 Spd., D/S, A/C, Air Ride, with Air Lift Axle, Very Clean  
**\$36,000**

**82 IHC**  
S1954, DT466, 5 & 2 Spd., P/S, A/B, 33,200 GVW, 14' Platform Dump, New Insp., Very Clean  
**Reduced To \$12,500**



**79-81 FORD LN9000**, Single Axle, NTC 240, P/S, A/B, 150" WB, Insp., Very Clean  
**CALL FOR DETAILS!**



(10) 28'-40'-45' Storage Trailer

Call Ray Leed 717-560-4901

## KEYSTONE TARPS SERVICE & SALES

Is A Manufacturer Of Custom Tarps

- Systems
- Load Straps
- Tarps
- Tarp Straps
- Storage Covers
- Gloves
- Used Railroad Ties

VISA 1-800-798-TARP (8277)

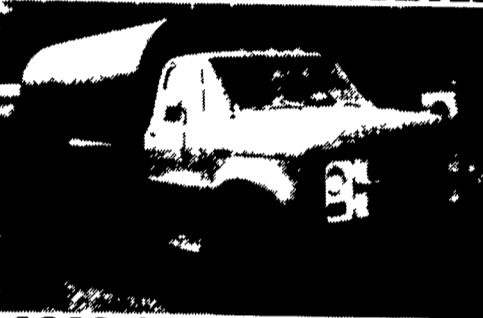
FAX 717-435-0036 717-435-0752



Mack Tandem Dump 14 ft  
**\$8,500**

Curry Supply Co., Curryville, PA  
**1-800-345-2829**

### FOR SALE — HONEY DIPPER



**1969 CHEVROLET C-50 SEPTIC TRUCK**

w/1,500 Gal. Tank, 4-Cyl. Gas Pump and All Hoses, Good condition  
Call

**(717) 273-7995**

CENTRAL PA'S LARGEST GM DEALER



'93 CHEV 3/4 TON  
4x4, Extend Cab  
Low Miles



'94 CHEV. SUBURBAN  
Loaded, Low Miles

OVER 200 NEW & USED TRUCKS IN STOCK



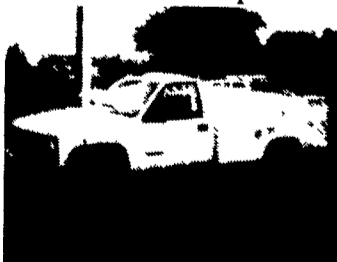
'95 CHEVROLET CONVERSION VANS  
35 N 15 in stock, High top and Low top



'95 CHEV, 3/4 TON  
8,600 GVW, Cheyenne and Silverado. 11 in stock



'95 CHEV. K3500  
4x4, Extend Cab, Dual Rear Wheels  
454 Gas, Loaded, Black



'95 CHEV. 3/4 TON UTILITY BODY  
Reading Body, 2 in stock



'95 CHEV. 6.5 DIESEL EXTEND CAB, DUAL REAR WHEELS  
4x4 & 4x2, 6 in stock



'85 INTERNATIONAL S1700, Dump  
w/Plow, 33,000 GVW #336P

If We Don't Have It, We'll Get It!

**Frederick**  
The SUPERMARKET OF TRUCKS  
(717) 274-1461 • (800) 222-5523

1505 Quentin Road,  
Rt. 72 (South)  
Lebanon, PA

• BILL MORTENSE • BILL BREAUULT • BILL BAILEY • BARB KEEFER



(2) MACK RD685 Tri-Axle Dump Truck,  
237 Mack Engine with Dyantard,  
6 Speed, Aluminum Bed, Good condition,  
**\$18,500.00 each.**

Curry Supply Co., Curryville, PA  
**1-800-345-2829**

- 1995 Chevy Lumina, LS, 4dr, Black, V-6 AT AMFMCAS, AC, PW, PL, CC, 17,018 Mi.....\$15,900
- 1994 Ford T-Bird, LX, Black, V-6, AT, AMFMCAS, AC, PW, PL, CC, 56,267 Mi.....\$11,800
- 1993 Ford Aerostar XL, Ext. 7 Pass, Green, V-6, AT, AMFMCAS, AC, PW, PL, CC, 55,709 Mi...\$11,600
- 1992 Ford F-150, XLT, 4x4, Blue/Gray V-8, AT, AMFMCAS, AC, PW, PL, CC, 84,726 Mi...\$11,900
- 1992 Nissan 240 SX, 2dr, White, 4cl, 5sp, AMFMCAS, AC, 20,071 Mi.....\$10,800
- 1992 Ford Clubwagon Chateau 7 Pass, Maroon/Tan, V-8, AT, AMFMCAS, Dual AC, PW, PL, CC, 65,123 Mi.....\$13,800
- 1992 Ford 350 Cargo Van, Orange, V-8, AT, AMFMST, AC, 89,873 Mi.....\$9,500
- 1990 Ford Ranger XLT, 4x4, Blue/White V-6 5sp AMFMCAS, AC, PW, PL, CC, 93,281 Mi...\$5,900
- 1990 Eagle Talon TSI AWD Gray, 5sp AMFMCAS, AC, PW, PL, CC, 58,311 Mi.....\$8,900
- 1988 Chevy Cavalier, 2dr, Maroon, 4cl, AT, AMFMCAS, AC, CC, 71,100 Mi.....\$4,800

**Brubaker's Auto Sales**  
Myerstown, PA  
717-866-5237