

# Twelve Receive

(Continued from Page B32)

cially involved in dairy judging. Kraig is studying ag business and minoring in dairy and animal science. He may return to the family farm someday. His mother is a member of Lebanon County Group #11.

Those who received \$250 are as follows:

• **JEFFREY G. BALMFR** is the 19-year-old son of Nancy C. Balmer of Lititz. He is a sophomore at Penn State studying feed nutrition, artificial insemination, or agricultural lending. He grew up on a dairy farm and is helping on the dairy cattle judging team at PSU. His mother is a member of Society #3 of Lancaster County.

• **DAVID M. CREAMER** is the son of Mark and Denise Creamer of Berlin. He is 18 and attending Penn State University. He is a member of FFA and received the Most Outstanding Senior Forester Award at Somerset Vo-tech. He plans to prepare for agriculture known as national resources and work in forestry. His mother belongs to Somerset County #4.

• **CHRISTINE HABECKER** is the daughter of Mark and Darlene Habecker. She grew up on a farm and is a junior at Penn State University. She's been involved in 4-H, Dairy Science Club and Food Science Club. She would like to pursue a career in food science in the dairy industry. Her mother is a member of Lebanon County Society #14.

• **SHAWN A. NORMAN** is the 18-year-old son of Donald and Janet Norman. He will attend Penn State University in the fall. He lives on a dairy farm and has been a 4-H member for 10 years, being treasurer and president. He plans to learn the best techniques on how to protect and maintain farm land. Shawn's grandmother



**Christine Habecker**

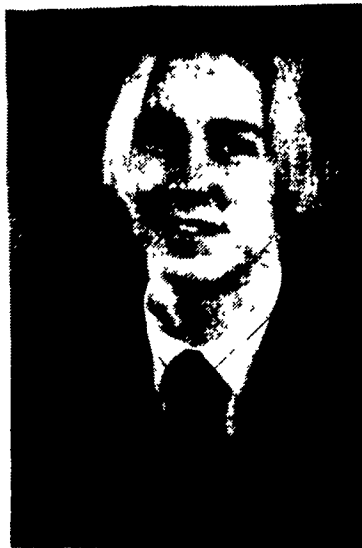
is a charter member of York County #7.

• **MATTHEW SHAFFER** is a junior at Penn State University where he is studying forestry and the son of Gary and Nadine Shaffer from York County. He looks forward to managing Pa. Forests for future generations. His grandmother is a member of York County's Society #21.

• **EMILY ZUG** is the 20-year-old daughter of Edward and Debbie Zug of Peach Bottom, Lancaster County. She will attend Delaware Valley in the fall after spending two years at Harcum College. Growing up on a dairy farm she plans a career in veterinary medicine working in large animal science. Her mother is a member of Lancaster County Society #34.

June 1 is the deadline for receipt of applications for next year's scholarships.

Committee members are Joyce Slaymaker, Lancaster County; Naomi Bupp, York County; Mary Pankake, Dauphin County; Barbara Nissley, Lancaster County; and Dottie Stricker, state president.



**Shawn Norman**



**Matthew Shaffer**



**Emily Zug**

## Amazing Corn Maze Kicks Off Shippensburg Corn Festival

**SHIPPENSBURG** (Cumberland Co.) — Don Frantz, theatrical producer, and Adrian Fisher, internationally renowned maze designer, announce plans to set the new world's record for the largest maze on Thursday, August 17, in Shippensburg.

Frantz and Fisher, the team that established The Guinness Record in 1993 with a 126,000 sq. ft. labyrinth, will open a new three-dimensional maze that will encompass more than 2 miles of path through a 131,000 sq. ft. corn field. The 3-acre 1995 Amazing

Maize Maze is a featured attraction of the 10th annual Shippensburg Corn Festival, which takes place on Saturday, August 26.

At this point the exact location is concealed, but the land and crop has been donated by an area dairy farmer. More details later.



**POWERFUL ENOUGH FOR A TOUGH JOB. AGILE ENOUGH FOR ANY JOB.**

Introducing the White Workhorse 6145. With a high torque rise 140 PTO hp Cummins engine and the most advanced powershift transmission ever put in a farm tractor.

Just a tap of your finger gives you complete control of 18 forward speeds and 9 reverse. And with pre-selectable and programmable speeds, greater comfort and visibility, fieldwork has never been easier or more productive.

Put a real Workhorse to work for you. Check out the new 6145 powershift tractor. At your White dealer today.

**See Our Display At  
AG PROGRESS DAYS  
Aug. 15, 16, 17  
East 2nd Street**



**NECESSARY TOUGHNESS.**

**See Your White Dealer Listed Below**

**G & D FARM  
EQUIPMENT CO.**  
RD 5 Penryn Rd.  
Manheim, PA  
717-664-2207

**MILLER EQUIPMENT CO.**  
RD 1  
Bechtelaville, PA  
215-845-2911

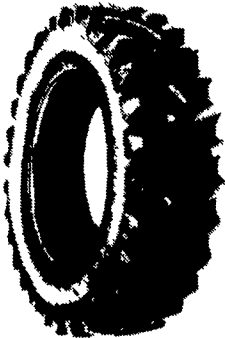
**STANLEYS FARM SERVICE**  
RD 1 - Off Rte. 125  
Klingerstown, PA  
717-648-2088

**FRANK RYMON & SONS**  
State Rt. 31 South  
Washington, N.J.  
908-689-1464

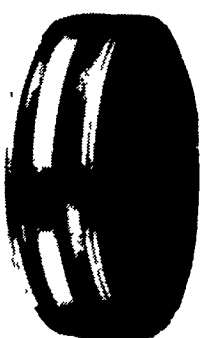
**WITMER'S INC.**  
Box 368  
Columbiana, OH 44408  
216-427-2147

**SHUEY'S SALES SERVICE**  
Ono, PA  
717-865-4915

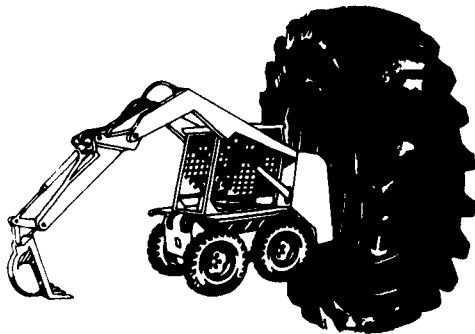
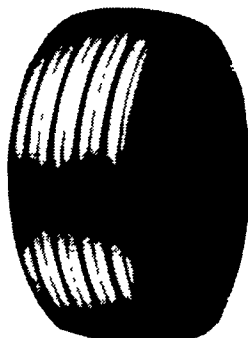
### COMPLETE FARM TIRE LINE



**Rear Tractor Tires**



**Front Tractor Tires**



**Skid Loader Tires**

*All Sizes  
And Types  
Of Tires  
Available At  
Discount Prices*

- Fast On-The-Farm Service
- Radio Dispatched Service

**LEOLA TIRE SERVICE, INC.**  
717-656-2574 258 W. MAIN ST., LEOLA, PA

