

National Grain Market

ST. JOSEPH, MO
AUGUST 8, 1995

High flying wheat having trouble finding a landing spot, continues to touch and go; up one day down the next. Wheat 2 to 6 cents lower. Corn steady to 1 cent lower. Sorghum mostly unchanged. Soybeans 1 to 4 cents lower. Wild price gyrations and trading in the wheat pits slowed down some what today, but bids tumbled after

near limit ups Tuesday. All Boards reported less activity as most traders and dealers have established a position and just hanging around until Friday's U.S.D.A.'s Crop Production Report. This was true on corn and beans also. Export orders stirred a little interest today, the first time this week, especially for corn and soybeans. Rumors of a big wheat deal turned out to be just that --- rumors---

Export demand: Purchaser Commodity Tonnage Delivery date South Korea Corn 257,000 Oct-Jan Taiwan Corn 128,000 By

Nov Taiwan Soybeans 118,000 Nov
Totals: Corn 385,000 tonnes. Soybeans 118,000 tonnes. Date Change Year ago
Truck bids: 08/08/95 08/07/95 08/09/94
Wheat: Kansas City (HRW, ORD) 4.74-4.75 dn 5-6 3.54-3.58 Minneapolis (DNS, 14%) 4.86 3/4 dn 5 3.79 1/2 Portland (SW) 4.56-4.62 dn 3-6 3.54-3.57 St. Louis (SRW) 4.06-4.09 dn 2 3.12-3.15
Corn, US 2 Yellow: Kansas City 2.83-2.85 unch 2.27-2.29 Minneapolis 2.44 1/4 dn 1/4 2.13 1/4 Southern Iowa 2.66 dn 1-unch 2.20-2.21 Omaha 2.68 unch 2.15-2.17

Soybeans, US 1 Yellow: Kansas City 6.06-6.08 up 10-3 5.63-5.66 Minneapolis 5.62 1/2 dn 3 5.59 1/4 Southern Iowa 5.86 dn 4-5 5.70-5.71 Cen IL Processors 5.96-6.05 dn 2 1/4-1 1/2 5.72 1/4-5.85 3/4
Futures Close: Kansas City (Sept) Wheat 4.58 dn 4 1/4 3.45 1/2 Minneapolis (Sept) Wheat 4.56 1/2 dn 6 1/4 3.44 1/2 Chicago (Sept) Wheat 4.34 1/4 dn 4 1/4 3.33 1/4 Chicago (Sept) Corn 2.78 1/4 unch 2.19 1/4 Chicago (Dec) Corn 2.78 3/4 up 1/4 2.23 1/4 Chicago (Nov) Soybeans 6.02 1/4

dn 3 5.63 1/4
Export Bids: Barge or rail, Port of New Orleans or North Texas Gulf. US 1 HRW Wheat, Ord. Protein: 5.00 1/4 dn 7-8 3.86 1/2 US 2 SRW Wheat. 4.49 1/4-4.51 1/4 dn 4 1/4-5 1/4 3.36-3.35 1/4 US 2 Yellow Corn: 3.16 1/4-3.16 3/4 up 2 1/4 2.42-2.43 US 2 Yellow Sorghum: Rail 5.28 unch 4.33 Barge 5.50-5.55 up 1 4.33 US 1 Yellow Soybeans: 6.42 1/2-6.44 1/2 dn 3 5.95-5.96

Pa. Grain

August 7, 1995
Report supplied by PDA
COMPARED WITH LAST MONDAY'S MARKET FOR SOUTHEASTERN, CENTRAL, AND SOUTH CENTRAL PA: CORN & OATS STEADY TO .10 LOWER, WHEAT MOSTLY .15 TO .30 LOWER, BARLEY STEADY, SOYBEANS MOSTLY .30 TO .40 LOWER, EAR CORN STEADY TO 4.00 LOWER.

SOUTHEASTERN PENNSYLVANIA
CORN NO. 2-Y RANGE 2.97-3.32 FEW REPORTED 2.84, AVERAGE 3.12, CONTRACT FOR HARVEST 2.68-2.85; WHEAT NO. 2 RANGE 3.84-4.10 FEW REPORTED 3.10, AVERAGE 3.93; BARLEY NO. 3 RANGE 1.55-1.80, AVERAGE 1.63; OATS NO. 2 RANGE 1.35-1.60, AVERAGE 1.44; SOYBEANS NO. 1 RANGE 5.50-5.85, AVERAGE 5.73, CONTRACT FOR HARVEST 5.50-5.77; FEW REPORTED GR. SORGHUM #2 CONTRACT FOR HARVEST 2.48; EAR CORN RANGE 81.00-95.00, AVERAGE 87.93.

SOUTH CENTRAL PENNSYLVANIA
CORN NO. 2-Y RANGE 3.00-3.20, AVERAGE 3.10; WHEAT NO. 2 RANGE 3.53-3.90 FEW REPORTED 4.10, AVERAGE 3.80; BARLEY NO. 3 RANGE 1.45-1.68 FEW REPORTED 1.80, AVERAGE 1.58; OATS NO. 2 RANGE 1.35-1.50, AVERAGE 1.42; SOYBEANS NO. 1 RANGE 5.50-5.90, AVERAGE 5.67; EAR CORN RANGE 80.00-88.00, AVERAGE 81.28.

SOUTHEASTERN, CENTRAL & SOUTH CENTRAL SUMMARY
CORN NO. 2-Y RANGE 2.80-3.32, AVERAGE 3.10; WHEAT NO. 2 RANGE 3.53-4.10, AVERAGE 3.87; BARLEY NO. 3 RANGE 1.45-1.80, AVERAGE 1.62; OATS NO. 2 RANGE 1.30-1.60, AVERAGE 1.44; SOYBEANS NO. 1 RANGE 5.45-5.90, AVERAGE 5.72; EAR CORN RANGE 75.00-95.00, AVERAGE 84.82.

CENTRAL PENNSYLVANIA
CORN NO. 2-Y RANGE 2.80-3.25, AVERAGE 3.07; WHEAT NO. 2 RANGE 3.75-3.95, AVERAGE 3.80; BARLEY NO. 3 RANGE 1.55-1.80, AVERAGE 1.66; OATS NO. 2 RANGE 1.30-1.60, AVERAGE 1.45; SOYBEANS NO. 1 RANGE 5.45-5.90, AVERAGE 5.75; EAR CORN RANGE 75.00-85.00, AVERAGE 81.16.

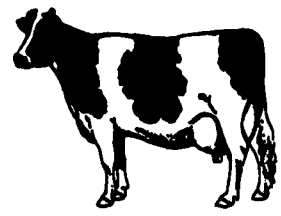
WESTERN PENNSYLVANIA
CORN NO. 2-Y RANGE 2.80-3.20 FEW REPORTED 2.61, AVERAGE 2.90; WHEAT NO. 2 RANGE 3.50-3.90, AVERAGE 3.65; BARLEY NO. 3 RANGE 1.50-1.59, AVERAGE 1.53; OATS NO. 2 RANGE 1.25-1.60 FEW REPORTED 1.85, AVERAGE 1.49; SOYBEANS NO. 1 RANGE 5.50-5.51, AVERAGE 5.50; EAR CORN RANGE 55.00-60.00, AVERAGE 57.50.

MONTH AGO
CORN NO. 2-Y 2.97; WHEAT NO. 2 3.91; BARLEY NO. 3 1.57; OATS NO. 2 1.57; SOYBEANS NO. 1 5.69; EAR CORN 81.51.

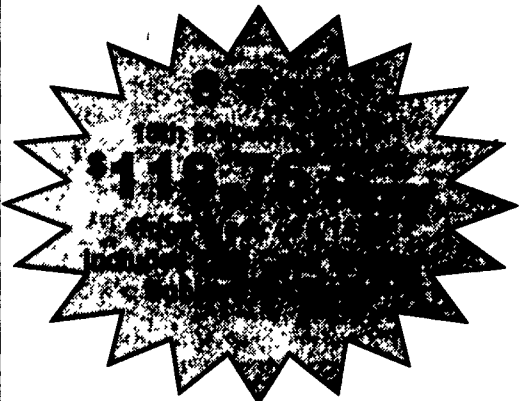
YEAR AGO
CORN NO. 2-Y 2.57; WHEAT NO. 2 3.09; BARLEY NO. 3 1.70; OATS NO. 2 1.45; SOYBEANS NO. 1 5.71; EAR CORN 75.87.

BEAT THE HIGH PRICE OF CORN!

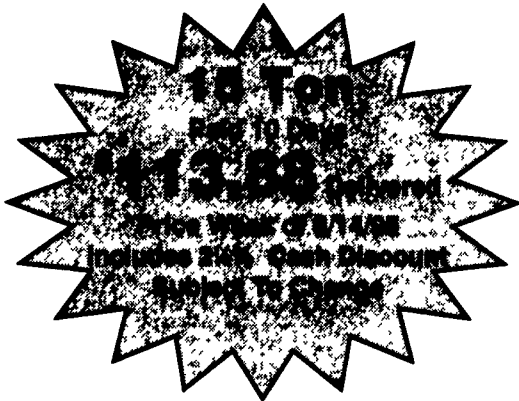
If you are running out of corn and looking for a high quality energy source for your cows, you need...



PENNFIELD'S ALL NEW BARLEY BLEND 10 1/2% #79506



This product contains Pennfield's new "Flat Rolled" Barley, Non Fortified Pellet, Molasses and Flo-Coat.



Performance Top Dress - LTD 22%

LTD 22% is a high performance Top Dress from Pennfield. It contains select sources of high quality blood meal and fish meal. Blood meal is an excellent by-pass source of the amino acid Lysine. Fish meal, an excellent source of by-pass protein, has also been shown to increase rumen bacterial protein synthesis - Rumen bugs work harder.

Combine these features with the steam crimped soybeans, steam flaked corn, balanced proteins and carbohydrates, plus vitamins and minerals and you have Pennfield's LTD Top Dress.



\$246.01 Delivered
1 Ton Bulk
Price Week of 8/14/95
Includes 2 1/4% Cash Discount
Subject To Change



Round The Clock Service - 24 Hours Per Day

pennfield feeds

Office 1-800-732-0467 Orders 1-800-995-0333

Quality - Value - Service