

Public Auction Register

Closing Date Monday 5:00 P.M.
of each week's publication

TUES. OCT. 31 - 8PM
Feeder Cattle Sale. Carlisle
Livestock Market, Inc., Exit
12 off I-81 turn South - then
left onto Alexander Spring
Rd. 249-4511

NOVEMBER

WED. NOV. 1 - 6:30PM
Winross trucks & toys. A&C
Diffenbach Auction, Inc.
100 W. Jackson St., New
Holland, Pa.

FRI. NOV. 3 - Fall Heifer
Sale. Belleville Livestock
Market, Inc.

SAT. NOV. 4 - Personal
Property. Loc: 405 Sandy

Hill Rd., Denver. From
Ephrata Rt. 272 North to
Schoeneck Rd. Turn Left to
Town of Schoeneck Turn
Left onto Mt. Airy Rd.
Approx. 2 Mi. Turn Right
Onto Sandy Hill Rd. To
Property on Right. West
Cocalico Twp. Lanc. Co.
Terms by: Ervin B. & Joyce
I. Martin. Kline, Kreider,
Good AucTs.

SAT. NOV. 4 - Mel's
Stables. at 834 Wallace
Rd., New Holland, Pa.
From Rt. 23 in New Hol-
land, go S. on Brimmer
Ave., go 2 miles S. on New
Holland Rd. to Hill Rd. Turn
left on Hill Rd. Proceed 1.2

miles to sale on left. From
Rt. 340 E. of Intercourse
take New Holland Rd. 2.5
miles to Hill Rd., right on
Hill Rd. of sale on left. Mel
Hoover, owner.

SAT. NOV. 4 - 8:30AM Toy
Sale held at the Lisburn
Comm. Fire House Pavil-
ion. If traveling on I-83 N.
or S use exit 18, take Rt.
114 W for 5 miles. Marion
Capp, owner. Little Ike
Eichelberger, auct.

MON. NOV. 6 - Real Estate
30.7 Acre Farm w/2 House-
s. From Ephrata Take 322
East Thru Hinkletown Turn
Right onto Farmersville Rd.
at Martin's Bike Shop Fol-
low Farmersville Rd. 2 Mi.,
Turn Left onto S. Fairmont
Rd. go 6/10 Mi. to Farm on
Left. Corner of S. Fairmont
and Linden Grove Rd.,
West Earl Twp., Lanc. Co.
Aaron E. Martin Auction
Service.

FRI. NOV. 10 - 9AM Farm
equip, tractors & farm sup-

plies. A&C Diffenbach Auc-
tion, Inc. 100 W. Jackson
St., New Holland, Pa.

FRI. NOV. 10 - 1:30 PM
State Graded Feeder Pig
Sale. Carlisle Livestock
Market, Inc., Exit 12 off I-81
turn South then left onto
Alexander Spring Rd.,
249-4511.

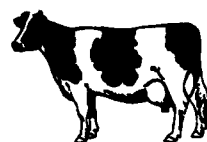
TUES. NOV. 14 - Fed
Cattle Sales. Carlisle Lives-

tock Market, Inc. Exit 12 off
I-81 turn S. then left onto
Alexander Spring Rd.
249-4511.

WED. NOV. 15 & THURS.
NOV. 16 - Large Two Day
Sale of Farm Equipment.

Etc. Located 6 Miles South
Of Chambersburg, Pa. One
Mile East of Marion along
Rt. 914, 1/4 East Off Rts.
81, Exit 4. Owners, Jerrold
& Gloria Oaks. Marion Auc-
tion Service.

DAIRY SALE



FRI. EVENING
AUG. 18th
7:15 PM
FOUR STATES
LIVESTOCK SALES
Hagerstown, MD
Phone 301-733-8120

**DEALER IN ALL KINDS
OF LIVESTOCK**

Also Crippled & Down Cattle

MARLIN S. IRWIN

Quarryville, PA
PH: 717-786-3016

NOTICE

To assure that
your Public Sale
appears in the
Public Sale Sec-
tion we must have
your advertise-
ment by 5 P.M.
Tuesday of each
week's
publication.

Dairy and Livestock Sales

**NEW HOLLAND
SALES STABLES, INC.**

New Holland, Pa.

Located 12 Miles East of Lancaster, just off Rt. 23

DAIRY SALE WEDNESDAY, AUGUST 16
11:00 AM BRED & BRED HEIFERS - BREEDING AGE CULS
12:00 NOON FRESH COWS & SPRINGERS

Several groups of open and bred heifers from local farms.
Fresh cows for DALE HOSTETTER - DAVID KING -
MERLE BRENNEMAN and JIM HOSTETTER.

SPECIAL MENTION

MARVIN ESHLEMAN is sending a load of cows
from Bradford Co. including several Reg. cows -
good udders, high production.

NOTICE

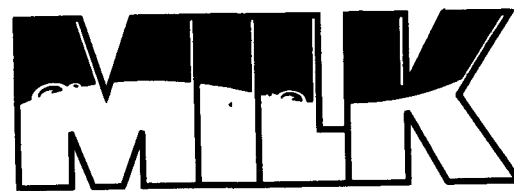
SPECIAL HEIFER SALE SAT., AUG. 26 10:00 A.M.
All animals should have 30 day TB and Blood Test
for out of state buyers. Your consignments welcomed.

Sales Managed By

New Holland Sales Stables, Inc.

Barn 717-354-1311 Fax 355-0706 Home 717-397-5538

Norman & David Kolb, Mgrs. 61L



HELP YOURSELF

**WEAVER'S SUMMER SWINE
PRODUCTION SALE**

Tuesday, August 22, 1995

7:00 P.M.

Tuscarawas Co Fairgrounds, Dover, OH
Selling Swine Genetics "Geared" for the "Grade
and Yield" System
Sale offering: 20 Bred gilts, 20 Boars, 30 Open
Gilts in Swedish Large Whites, Hampshires,
Durocs and F-Is

If you need to get your hogs leaner with more
muscle but still grow fast and stay productive in
the farrowing crate come take a look, We have the
genetics for you.

An excellent set of boars and open Gilts to make
Club pigs or for Commercial use sell in this sale.

All boars scanned with real time by:
Mike Cherchuck 717-258-1056
Free Pork Supper at 6:00 P.M.



Hampshire



Swedish Large White



Durocs

Call: For Sales Catalog or Video
Ringmen
Dan "Trapper" Troyer 216-674-2321
Jr. Miller 216-893-2225

or Write to:
Lester Weaver Family
2771 CR 168
Dundee OH 44624

Auctioneer: Dan Baker 317-583-2466
NSR Rep: Ralph Doak 513-382-8180

Office: 717/291-1542 Residence: 717/354-9534

JACK DELP

Certified General Appraiser
Specializing in Farms & Land

148 East Boad Street
New Holland, PA 17557

HFA HORNING

Farm Agency, Inc.

Courteous Real Estate Services
Professional Auctioneers
State Certified Appraisers
Specializing in Farms and Land
Alvin Horning, Broker
Route 23, Morgantown, PA
(610) 286-5183

**ROGERS
COMMUNITY AUCTION
INC.**

**PLEASE NOTE
NEW SALE TIMES!**

Located 8 Miles East Of
Lisbon, Ohio Or One Mile West Of
Rogers, Ohio On St. Rt. 154.

FRIDAYS

Produce, Egg, Miscellaneous Auction
Starts At 6 P.M.

Poultry Auctions Start At 6 P.M.
Doors Open At 7:30 A.M.

To Accept Consignments
Open Air Market All

Day And Evening

Doors Open At 7:30 A.M. To Rent
Market Spaces. Over 2.5 Miles Of
Outside Concessionaries And 30,000
Sq. Ft. Under Roof.

WEDNESDAYS

Farm Machinery
Consignment Auction
The 1ST WEDNESDAY EVENING
OF EACH MONTH
at 3 P.M. sharp.

We are open the preceding Tuesday of
each sale day to check in consignments
from 8 A.M. to 8 P.M. Handling farm
machinery, lawn and garden equipment,
tools, fire wood, cut lumber and related
miscellaneous items. Five auctioneers
operating simultaneously

**Hay And Straw Grain
EVERY WEDNESDAY**

selling truck
load lots by the bale or ton
starting at 1 P.M.

Barn Opens at 8 A.M. to Consign
Jim and Ken Baer

Auctioneers and Managers
Phone (216) 227-3233 or (216) 227-3236
"Sales Every Week Since 1955"

**John D. Stauffer
Auctioneers**

1484 Mountain Road, Manheim, PA 17545

Fulltime Courteous Professional Auction Service
Since 1976
Real Estate • Farm Equipment • Antiques
Personal Property • Livestock
Phone 717-665-5099

MARTIN AUCTION SERVICE

410 W. Church Rd
Ephrata, PA 17522
(717) 733-3511

Real Estate • Farm Equipment
• Antiques • Household Goods
It doesn't cost to use our Auction Service...It Pays.
CALL TODAY!!

KREIDER, KLINE & GOOD

AUCTIONEERS

COMPLETE PROFESSIONAL AUCTION SERVICE
REAL ESTATE - FARMS & RESIDENTIAL
PERSONAL PROPERTY - ANTIQUES -
FARM STOCK SALES - LIQUIDATIONS

RANDAL V. KLINE LLOYD H. KREIDER
AUCTIONEER-REALTOR AUCTIONEER
717-733-1006 717-786-3394

ROY E. GOOD, JR.
AUCTIONEER
(717) 445-4309

REAL ESTATE AUCTIONEERS PERSONAL PROPERTY



Complete Auction Service

John Stoltzfus 610-593-6680 J.D. Fisher 717-442-4167 Miles Schuman 610-347-0511

Conducted by H&H Auction

610-384-7647

Auctioneer:
Steve Petersheim:
Steve Jr.



**COMPLETE
AUCTION SERVICE**

Antiques
Household Goods
Farm Equipment
Real Estate

215-593-2828