

The 1995 Ag Progress Days Schedule Of Events August 15-17

If you plan to go to Ag Progress Days at Rockspring in Centre County next week, this schedule of events and the layout of the exhibition area will be useful. The show at Penn State's Russell E. Larson Agricultural Research Center is scheduled to run August 15-17. In this August 12 Ag Progress Issue of *Lancaster Farming* we expand on this event with exhibitor lists and messages and stories of special interest to everyone who plans to attend the elaborate showcase of agricultural education and technology.

August 15-17, 1995

Listed events are held all three days unless specific days are indicated.

Key to abbreviations: CB = College Exhibits Building; CC = Corn Crib; CT = Conservation Education Tent; HA = Horse Arena; SE = Special Events Building; FYB = Family and Youth Exhibits Building; Tu = Tuesday; We = Wednesday; Th = Thursday.

- 9:00 Ag Progress Days Exhibits Open
- 9:30 Composting Tour - CT
- 10:00 General Research Tour - CC
Horse Breed Clinics - HA
Video: *Faces of the Future* - CT
Slide Show: *Lines on the Land* - CT
Wetlands and Stream Corridor Management Tour - CT
Forest Stewardship Tour - CT
Macintosh Computer Class - FYB
- 10:15 Machinery Demonstration: Mowing - see program guide
- 10:20 General Research Tour - CC
- 10:30 Tractor Roll-Over Demonstration - (Tu., We) - end W. 8th St.
Macintosh Computer Class - FYB
Composting Tour - CT
- 10:40 General Research Tour - CC
- 11:00 SciQ Game Show - CB
Tractor Ride-and-Drive opens - between 1st St. and Rt. 45
General Research Tour - CC
Forest Stewardship Tour - CT
Pasture Management Program and Demo - CT
Macintosh Computer Class - FYB
- 11:15 Machinery Demonstration: Primary Tillage - see program guide
- 11:20 General Research Tour - CC
- 11:30 Composting Tour - CT
Macintosh Computer Class - FYB
- 11:40 General Research Tour - CC
- 12:00 Storyteller Jan Kinney - CB
Video: *Land of the Ringnecks* - CT
Forest Stewardship Tour - CT
General Research Tour - CC
Macintosh Computer Class - FYB
- 12:15 Machinery Demonstration: Precision Planters

- Snap Bean Evaluation - see program guide
- 12:20 General Research Tour - CC
- 12:30 Tractor Roll-Over Demonstration - end W. 8th St.
Potato Research Tour (Th) - CC
Macintosh Computer Class - FYB
Composting Tour - CT
- 12:40 General Research Tour - CC
- 1:00 Agricultural Conservation Tour - CT
Horse Handling and Training Clinic - HA
General Research Tour - CC
Forest Stewardship Tour - CT
Macintosh Computer Class - FYB
- 1:20 General Research Tour - CC
- 1:30 Machinery Demonstration: Secondary Tillage - see program guide
Composting Tour - CT
Macintosh Computer Class - FYB
- 1:40 General Research Tour - CC
- 2:00 SciQ Game Show - CB
Tractor Roll-Over Demonstration - end W. 8th St.
Pasture Management Program and Demo - CT
General Research Tour - CC
Wetlands and Stream Corridor Management Tour - CT
Forest Stewardship Tour - CT
Macintosh Computer Class - FYB
- 2:15 Dairy of Distinction Program (Tu) - SE
- 2:20 General Research Tour - CC
- 2:30 Machinery Demonstration: Round Silage Baling - see program guide
Horse Breed Clinic (Th) - HA
Composting Tour - CT
Macintosh Computer Class - FYB
- 2:40 General Research Tour - CC
- 3:00 Forest Stewardship Tour - CT
Horse Breed Clinics (Tu) - HA
General Research Tour - CC
Coordinated Resource Management Program - CT
Macintosh Computer Class - FYB
- 3:30 Machinery Demonstration: Round Bale Handling - see program guide
Tractor Roll-Over Demonstration -

- end W. 8th St.
- Composting Tour - CT
- Macintosh Computer Class - FYB
- 4:00 Video: *Pennsylvania's Black Bear* - CT
- 5:00 Ag Progress Days Exhibits Close (Tu, Th)

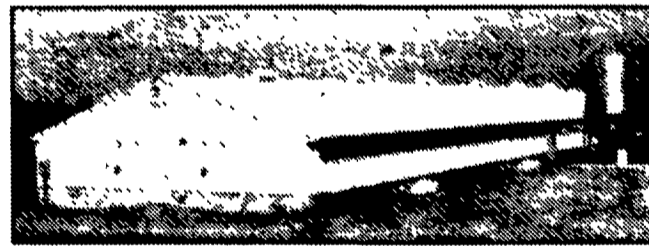
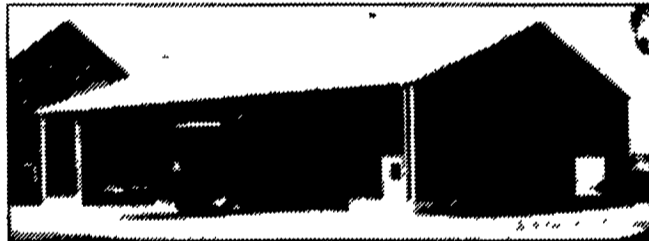
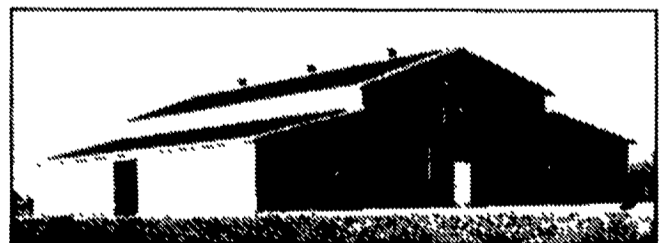
The following activities take place on Wednesday only

- 2:50 Horse Events: Breed Clinics; Therapeutic Riding Demo; 4-H Drill Team Exhibition - HA
- 3:20 General Research Tour - CC
- 3:40 General Research Tour - CC
- 4:00 Horse Breed Clinics - HA
Forest Stewardship Tour - CT
General Research Tour - CC
Macintosh Computer Class - FYB
- 4:20 General Research Tour - CC
- 4:30 Macintosh Computer Class - FYB
- 4:40 General Research Tour - CC
- 5:00 Forest Stewardship Tour - CT
General Research Tour - CC
Macintosh Computer Class - FYB
Tractor Ride-and-Drive closes
- 5:20 General Research Tour - CC
- 5:30 Macintosh Computer Class - FYB
- 5:40 General Research Tour - CC
- 6:00 SciQ Game Show - CB
Horse Events: Flag Presentation: 4-H Drill Team Exhibition; Breed Exhibitions and Draft Horse Driving Demonstrations - HA
Macintosh Computer Class - FYB
General Research Tour - CC
- 6:30 Macintosh Computer Class - FYB
Tractor Roll-Over Demonstration - end W. 8th St.
- 7:00 Macintosh Computer Class - FYB
- 8:00 Ag Progress Days Exhibits Close (We)

Tractor Ride-and-Drive

Between 1st Street and Route 45
New for '95! In the market for a new tractor? Hop on and test drive the latest models from five leading farm equipment manufacturers. It's one-stop shopping as you compare up to five models from each company. Times are (Turn to Page E26)

Engineered For Life On The Farm.



Choose from a wide range of standard or custom Lester wood frame agricultural buildings. Each features value engineered Uni-Frame® construction. Top quality materials. The industry's leading warranty.

And the support of the nation's leading building company.

Reap the benefits of quality, affordable storage. Call your local Lester dealer or 1-800-826-4439 today.

**Stop By And See Us At
AG PROGRESS DAYS
August 15, 16, 17th on West 5th St.**



**Contact The Lester
Dealer Nearest You
Today For A Quote
Or More Information**

PENNSYLVANIA

Annville
**H.R. WEAVER
BUILDING
SYSTEMS**
(717) 838-3753

Waterford
**ROBERT R.
SMITH
& SONS**
(814) 825-5828

Coalport
**FOUR COUNTIES
CONTRACTORS,
INC.**
(814) 672-5751

West Chester
**DELAWARE
VALLEY
STRUCTURES,
INC.**
(610) 344-7242

Lebanon
**LEBANON
BUILDING
SYSTEMS, INC.**
(717) 272-4449

MARYLAND
Street, MD
**GOMPF CONST.
CO.**
(410) 692-5350

Montoursville
**COUNTRY
CONSTRUCTION**
(717) 368-1718

Taneytown, MD
**RASCHE
BROTHERS, INC.**
(410) 756-4457

New Oxford
**UMBAUGH
BUILDINGS, INC.**
1-800-222-9047

NEW JERSEY
Mt. Holly, NJ
**MATTSON
ENTERPRISES,
INC.**
(609) 261-3600

