

Bradford County Livestock Sale 'One Of The Best Ever'

CAROLYN N. MOYER
Bradford Co. Correspondent
TROY (Bradford Co.) — "The average looks very, very good," said Bradford County Extension Agent Jake Guffey at the completion of the Bradford County Livestock sale. "It's one of the best sales ever."

Forty-two hogs, 16 lambs and three steers went through the sale,

which took place recently at the Troy Fairgrounds.

The high volume buyer was P&C Foods which placed the top bid on 10 animals.

Greta Braund's grand champion market hog topped the sale at \$4 per pound. The 210-pound animal was purchased by SPE Incorporated.

The second high price among

the hogs was commanded by the reserve grand champion sold by Andy Tiffany. His 216-pound animal sold to Valley Stockyards for \$2.75 per pound.

Two hogs were donated back to the 4-H program's scholarship fund. These animals, donated by Empire Livestock and Judson's Incorporated commanded prices of \$2.20 and \$2 per pound respectively, and were purchased by P&C Foods and Columbia Cross Roads Equipment.

With prices ranging from the champion's \$4 down only to \$1.25 per pound, the hogs averaged \$1.76 per pound.

Prices for lamb were equally high as the grand champion market lamb brought \$3.75 per pound. Northeastern Farm Credit purchased the 120-pound champion from Kendra Moore.

The second high seller was the reserve grand champion market lamb raised by Joslyn Elliott. Her 104-pound lamb was sold to C&N Bank of Troy for \$3.50 per pound.

The average bid on the lambs was \$1.65 per pound with prices ranging from the champion's high of \$3.75 to a low of \$1 per pound.

Three lambs were donated back to the 4-H program for their scho-

(Turn to Page E12)

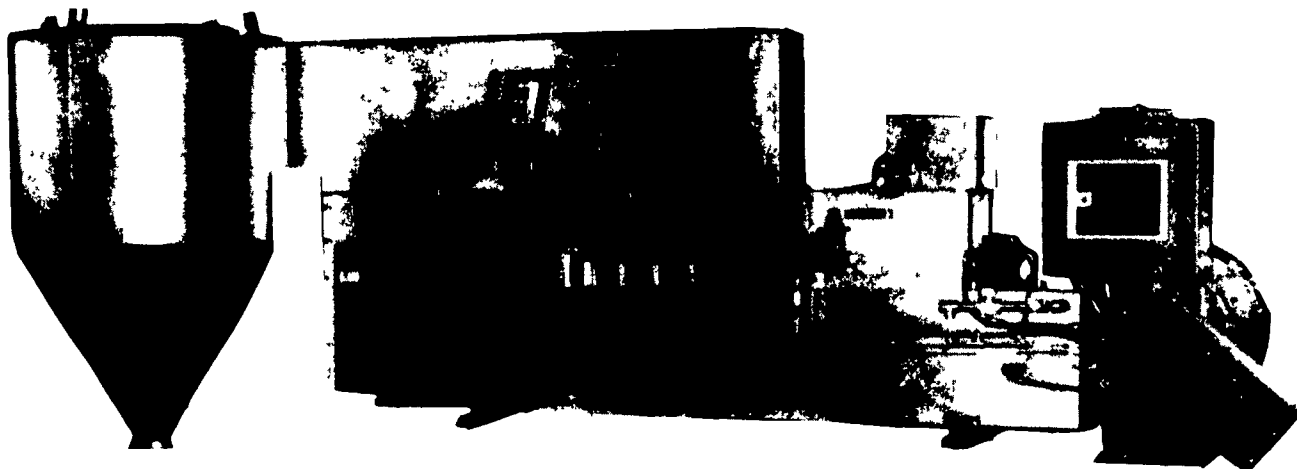


Nils Peterson of SPE Inc. purchased the 210-pound champion hog from Greta Braund for \$4 per pound.



The champion lamb tipped the scales at 120 pounds and commanded a price of \$3.75 per pound. Here buyer Bonnie Klef of Northeastern Farm Credit poses with 4-H member Kendra Moore.

**SEE US AT AG PROGRESS DAYS
EAST 5TH STREET... TO INCREASE PROFITS!**

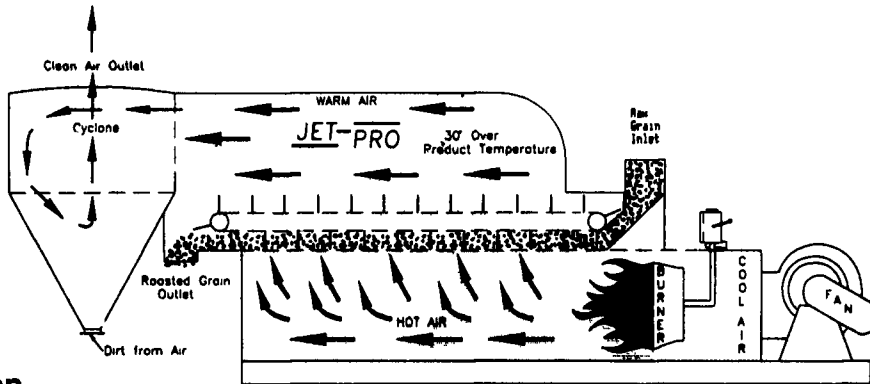


JET-PRO

LOW COST, HIGH PERFORMANCE, DEPENDABLE
WAY TO ROAST YOUR GRAIN WITH AIR

HI TEMPERATURE AIR ROASTER

**ROAST
GRAIN...
DON'T
BURN IT!**



- Low capital investment
- Low processing cost per ton
- Low space requirement
- Uniform heating by fluidization*
- Consistent product quality
- Increased nutrient availability

Yes! Tell me how to increase profits by air roasting my grain

NAME _____

ADDRESS _____

CITY _____ ST _____ ZIP _____

PHONE _____



PHONE 717-432-9738
FAX 717-432-8389

AGRI-CORP

1248 SOUTH MOUNTAIN RD., DILLSBURG, PA 17019

TAM AGRI CORP. SELLS, INSTALLS, AND SERVICES

KEN CLUGSTON
(717) 665-6775

**CRAFT-BILT
CONSTRUCTION INC.**

FARM-HOME BUILDING
1242 Breneman Road
MANHEIM, PA 17545
PH: (717) 665-4372

BUILDING & REMODELING FOR—
DAIRY RESIDENTIAL
SWINE POLE BUILDINGS
BEEF STORAGE

**SOYBEAN ROASTING
ON YOUR FARM**



**FULL-FAT ROASTED SOYBEANS
for Maximum Feeding Value**

- High energy, by-pass protein and palatability
- Toxic enzymes and molds destroyed
- Peak performance with retained oil and lecithin
- Improved Total Digestible Nutrients
- Ultimate rich peanutty flavor and aroma
- Dried as roasted
- Roast own grown beans - Avoid trucking and docking
- Economical and efficient for lower feed costs
- Ready for use or storage

Custom Roasting in PA and Surrounding States

See Us At
AG PROGRESS DAYS
on West 3rd Street

David N. Groff
RD 3 Lewisburg, PA
(717) 568-1420

Schnupp's Grain
Roasting, Inc.
RD 6 Lebanon, PA
1-800-452-4004
717-865-6611

Horst Grain Roasting
3040 Penna Grove Rd.
Lincoln Univ., PA 19352
(Chester Co.)
(610) 869-8834

Roast-M-Matic
Grain Roasting
Sales-Service
Custom Work
Roast Cool Unit Available