

1 FARM EQUIPMENT



WISCONSIN HEAVY DUTY ENGINES

Serving The Community Since 1971

Wisc.-Robin, Kawasaki, Kohler, Briggs & Stratton, Tecumseh, Honda
Rockford and Twin Disc Clutch Parts & Accessories

WISCONSIN REPLACEMENT ENGINES New & Rebuilt Short Blocks

• See Us Now For Special Prices On Pressure Washers

• Special Prices on 30HP VH4 crank start engines No Tank \$1,945

Authorized Service Center

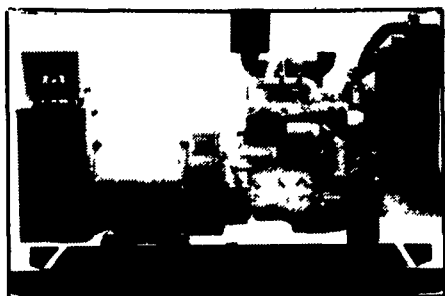


• Complete Rebuilding
• Large Parts Inventory

FISHER ENGINE SERVICE

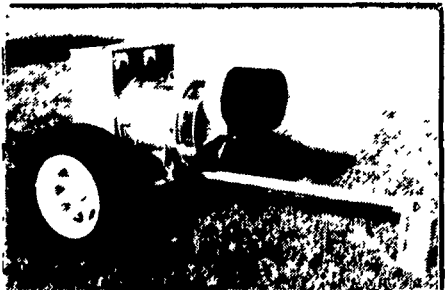
3141 Old Philadelphia Pk. • Bird-In-Hand, PA 17505

GENERATORS



AUTOMATIC and MANUAL SYSTEMS

DIESEL L.P. GAS NAT. GAS NEW & USED



LEROY SOMER PTO ALTERNATORS

BRUSHLESS INDUSTRIAL GRADE 11 to 60 KW

READY FOR THE NEXT STORM?

For Sales and Service Call The People Who Know Generators

MARTIN ELECTRIC PLANTS

280 Pleasant Valley Rd., Ephrata, PA 17522-8620

Tel: 717-733-7968 Fax: 717-733-1981

USED EQUIPMENT

Case IH 7110, 2WD
IH 986 w Cab
JD 4030 w/Canopy
Demco 600 Gal T.A. Sprayer w/45' Boom w/Foam Marker
Knight Model 2 ~~SOLD~~ Augie Mixer Wagon
16 Ft. Trailer
Int. 445 Baler w/Thrower

Morledge Grain ~~SOLD~~ - 275 Bu. Capacity
Int. Model 5000 Windrower w/Cab
Ford 8600
Woods M5 Dixie 5' rot ~~SOLD~~
Taylor-Way 13' offset disc w/cushion gangs, very good
Glenco 12' pull-type field cultivator

Unverferth gravity boxes in stock

We Ship Parts UPS Daily

BANGOR IMPLEMENT

6 Flicksville Rd., Bangor, PA 18013

610-588-5922 or 610-588-5924

© 1995 CASE CORPORATION
Case IH is a registered trademark of Case Corporation



Call Norm or Mark for fine details on these nice used tractors.

JD 4620, syncro range
JD 4430, cab, air, 77 model
JD 4020 dsl side console
JD 50, WF, 3 pt, power steering
Ford 7700, cab, air, dual, power, weights
Ford 7700 w/roll bar
Ford 7600 w/factory cab, dual power, dual remotes
Ford 5610 Series II, cab, air, loader, like new
Ford 3610 diesel, 700 hours, like new

Ford 3600 diesel, with Ford loader
Ford 801 Gas, w/5 spd. & PS
Ford 641 w/Ford all hyd. loader, power steering
Case 2290, cab, air, power shift
IH 1456, 2 PTO's, 2 remotes
IH 3688, Cab & Air
White 2-105, Cab & Air
MF 1505 articulated tractor, 3 pt & PTO
David Brown 1200 dsl. extra nice
David Brown 990 dsl, late one, nice

USED PLOWS AND CHISELS

Ford 151 4 or 5x18 regular trip
White 508, 4x16 spring auto reset
IH 720, 4x18 spring auto reset
IH 720, 5x18 spring auto reset
Oliver 588, 4x18 spring auto reset
JD 1710 9-Tooth Disc Chisel w/tandems

USED FORAGE EQUIPMENT

JD. 3970, electric controls
Gehl 970, 3 Beater, Roof, Tandem, like new
(3) Dion Forage Wagons
Gehl 860 w/2 heads
Gehl 1060 Harvester w/2 heads
Gehl 1065 Harvester, like new
Gehl FB88 Forage Blower
NH 3 RN Auger Base Package w/8' Pickup

USED DISCS AND HARROWS

Brillion 24' transport spring tooth harrow, exc.
Knowles 20' transport spring tooth harrow
JD 215 13' finishing disc
Bush Hog 1440 Disc, 18' wing fold rock flex

LOADERS

Ford 772, QT, fits 5000 to 7610
Freeman Loader for JD Utilities
Ford 727 loader, fits 4, 5, or 7000 tractors
IH 2250 Loader w/Brackets
NH 455 Skid Steer, 1988. Model, nice

USED HAY EQUIPMENT

JD #10 side mounted mower, fits 3010, 3020, etc.
NH 848 w/Bale Command and Wide Pick-up
JD 625 3 Pt. Hyd. Drive Hay Rake
FNH 489 Haybine
NH 477 Haybine
NH 479 Haybine

MISCELLANEOUS

JD 350 Dozer w/6-way blade
JD 7000 4R Conservation w/Monitor
Stoltzfus Wet Lime Spreader
NI 325 2RN Picker

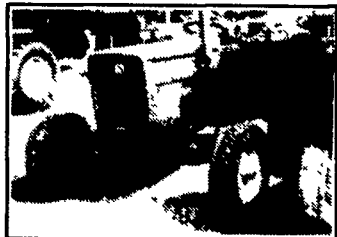
BARGAIN HUNTER VALUES

Track Down BIG BUYS ON QUALITY Used Equipment

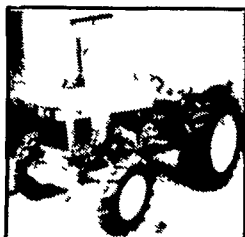


110 South Railroad Ave.
New Holland, PA 17557
(717) 354-4191

M-F 7:30 to 5:00
Sat. 7:00 to Noon



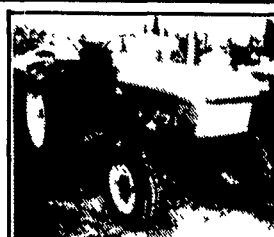
AC 5040 40 HP, Good Condition \$6,400



JD 1050 35 HP \$9,500



NH 630 Round Baler Makes 4'x4' Bales



Ford 2110 35 HP, Diesel \$6,950



1993 NH 816 Forage Box Excellent Condition



Case IH 1594 85 HP, 2500 Hrs., Good Condition \$15,500



Case 480E with Shuttle Shift 2300 Hours \$16,900



NH 900 Harvester Field Ready, New Knives \$8,500



JD 348 Baler Excellent Condition



Lilliston 9680 10 Ft. No Till Drill \$7,500



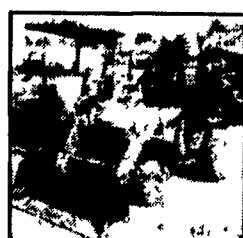
JD 1217 Mower Conditioner, 7' Cut, With Non-Clog Guards, Sharp \$4,800



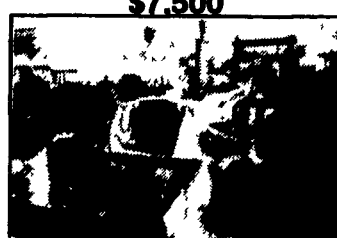
JD 1450 5 Bottom Semi Mounted Plow, Trip Bottoms \$1,450



NH D1000 2'x3'x8' Square Baler Ready to go \$18,900



JD 855 24HP MFWD 160 Hours With Loader \$13,900



Ford 545 2WD Industrial w/Loader \$14,900