

# Community Show Sept. 8-10

Lancaster Farming, Saturday, August 12, 1995-D3

## Top Lancaster DHIA Cows

(Continued from Page D2)

FARM	COW	REG	DATE	305	24,000	3.2	781	4.1	999
HERSHVALE FARMS	40	RR	4-9	305	24,400	3.2	781	4.1	999
	62	RR	7-11	305	26,373	2.9	770	3.7	979
JAY RICHARD GROFF	129	GR-N	4-7	305	26,427	3.0	781	3.5	922
	AMBER P. STOLTSPUS	SCOTT	GR-N	5-5	283	25,009	3.1	781	3.7
ALFRED & JOHN HANWER	217	RR	4-7	305	24,144	3.2	781	3.5	830
MELVIN SOOK	343	GR-N	4-0	305	25,039	3.1	780	3.1	775
SAMUEL J. STOLTSPUS	191	GR-N	4-9	305	25,096	3.1	780	3.3	821
HERBERT H. DENVER	VANILLA	RR	5-1	305	23,367	3.3	770	4.4	1033
GLEN F. SHERK	PANIX	RR	5-9	305	23,484	3.3	778	3.8	886
HENRY P. STOLTSPUS JR	EMOPIA	RR	2-11	305	22,509	3.4	776	2.4	530
PHILIP & KIM HURST	131	RR	3-10	305	24,193	3.2	775	2.3	556
HILLSIDE ACRES	18	RR	4-9	305	24,689	3.1	775	3.3	803
MASONIC HONDS FARMS	85	RR	2-11	305	26,283	2.9	774	3.4	895
JAMES H. OBERHOLZER	1	GR-N	3-1	305	23,539	3.3	774	4.2	986
EMANUEL N. LAUTZ	FREDA	GR-N	4-4	305	20,837	3.7	774	4.4	909
BURNELL W. WOLT	11	RR	3-10	305	23,210	3.3	772	4.0	925
CLAIR H. OBERHOLZER	45	GR-N	3-8	305	22,599	3.4	771	4.0	903
MARVIN R. STOLTSPUS	237	GR-N	4-2	305	22,361	3.4	771	3.6	816
AMON H. BRIPP	BALLAT	RR	3-10	301	23,651	3.3	771	3.8	892
WEST BROTHERS	82	GR-N	5-2	305	22,204	3.5	770	3.5	786

THURMONT, Md. — This year marks the 39th anniversary of the Thurmont and Emmitsburg Community Show, scheduled for Friday, Saturday and Sunday, Sept. 8-10 at Catocin High School.

More than 2,500 farm and garden, household, quilt, livestock, machinery, and commercial displays can be seen during the three-day event.

Each year, the Community Show honors an organization for its contributions to community life. This year, the show will be celebrating the 25th anniversary of the Thurmont Community Ambulance Service, Inc.

The show opens Friday, Sept. 8, at 6 p.m. to the public. At 7:30 p.m., the opening program will begin in the auditorium with the massing of the flags by community civic organizations. Jerry Free will sing several vocal selections during the program. Also during the program, the Community Ambulance Service will be honored. The highlight of the program will be the announcement of the 1995-1996 Catocin FFA student

ambassador.

Following the program at 9 p.m., an auction of all baked products exhibited at the show will be held in the auditorium.

Saturday's activities include a pet show at 10:30 a.m. and the Beef, Sheep and Swine Fitting and Show contest from 9 a.m. to 2 p.m. The Thurmont Grange will serve a family-style turkey and ham supper in the school cafeteria from 3 p.m. to 7 p.m.

The Catocin Area FFA Alumni Beef, Sheep and Swine Sale will be held in the Agriculture Center at 7 p.m.

On Sunday, Sept. 11, the show opens at 10:30 a.m. with a dairy and goat show. At noon, a chicken barbecue dinner will be served by the Catocin FFA Alumni in the school cafeteria.

"Dash for Mash" pig, goat, and duck races will be held every hour from 1-4 p.m. by Merle Mills, a

Montgomery County farmer. The Catocin Mountain Horseshoe Pitching contest will begin at 2 p.m. Barnyard Bingo, sponsored by the Catocin FFA Alumni, will begin at 2 p.m. on the athletic practice field. Chandra Curry will have a rodeo event at 2 p.m. near the Ag Center.

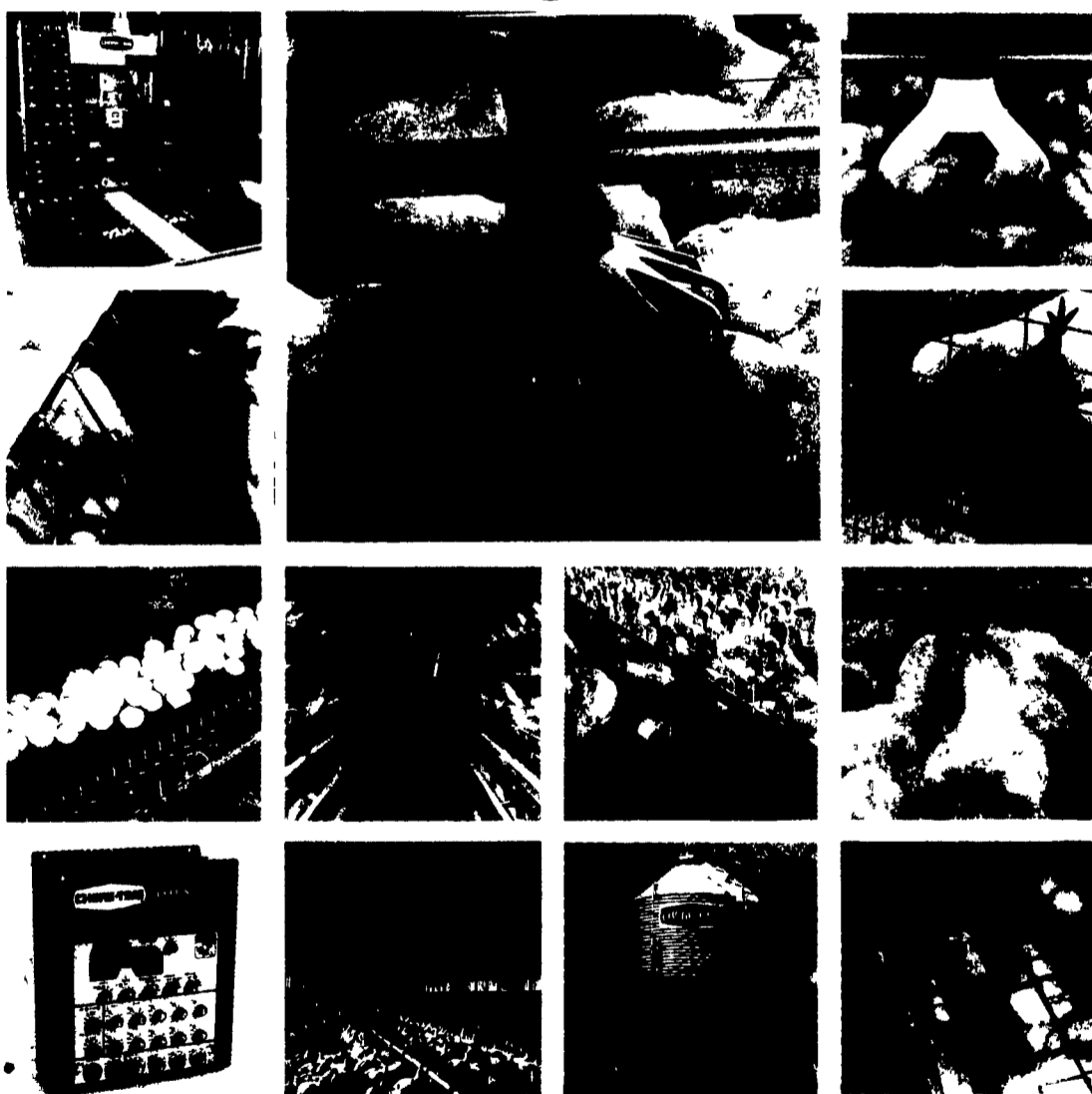
Tyson and Sylvia Creamer will demonstrate sheep shearing at 1:30 p.m. and 2:30 p.m., and there will be a spinning and weaving demonstration by Deborah May.

During the three-day show, the Catocin FFA and Hunting Creek Fisheries will have an aquaculture display in the Ag Shop area. The Tom's Creek Church Quilters will be quilting in the quilt and afghan display room. The Loys Station Covered Bridge model, USS Monocacy model and Church of St. Louis IX model will be on display by Dennis DaSilva and Paul Barbot. Carl Angleberger will have a small airplane on display.

**MILK AMERICA'S HEALTH KICK**

# PRODUCT LEADERSHIP

**CHORE-TIME**



Innovation. Quality. Durability. These traits have been the foundation of Chore-Time's product leadership in the poultry feeding industry for over 40 years. Our continuing philosophy is to develop and manufacture innovative systems users consider the best in the world. Nothing else works better, lasts longer, or is more reliable than Chore-Time. Contact us today and put Chore-Time's product leadership to work for you.

Authorized **CHORE-TIME** master distributor since 1982

**Northeast agri systems**

Northeast Agri Systems, Inc.

Flyway Business Park  
139A West Airport Road  
Lititz, PA 17543

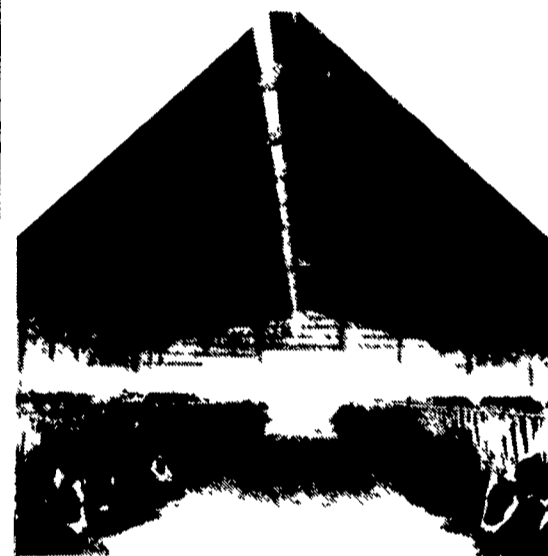
Ph: (717) 569-2702

1-800-673-2580

Store hours Mon-Fri 7:30 to 4:30  
Sat 8:00 to Noon  
24 Hr 7 Day Repair Service



FEDERALSBURG, Md.  
305 UNIVERSITY AVE.  
(Formerly Long Lumber)  
1-800-735-6361  
STORE HOURS:  
7:30 A.M. - 4:30 P.M.  
Monday-Friday  
SAT. 8 A.M. - 11 A.M.



## AGRICULTURAL ENGINEERING CONSULTANTS

"CALL US TO DESIGN YOUR NEXT BUILDING PROJECT"

FARMSTEAD PLANNING

BUILDING DESIGN

BLUEPRINT DRAFTING

VENTILATION DESIGN

DAIRY FACILITIES DESIGN

**Timber Tech Engineering, Inc.**

P.O. Box 145

256 West Franklin Street

Womelsdorf, PA 19567

PH: (610) 589-4589

FAX: (610) 589-5384

