

National Grain Market

ST. JOSEPH, MO
AUGUST 2, 1995

Grain and soybean bids fell sharply, especially wheat, as bids plummeted on improved growing conditions in and active profit taking on the board. Wheat 22 to 30 cents lower. Corn 3 to 6 cents lower. Sorghum 7 to 8 cents lower. Soybeans 5 to 7 cents lower. Wheat traded limit down, today, as fund buying weighed heavily on bids. Favorable growing conditions in spring wheat areas and reports that crops are looking very good sent wheat bids sharply downward. Continued good export demand for wheat this week, however, limited declines. Corn and soybean bids fell sharply lower from spillover weakness in wheat pits. Beneficial rains and cooler temperatures this week in the Midwest and Corn Belt areas have corn and bean crops looking good. Forecasts for more of the same conditions over the next few days, added weakness to bids. Additional overseas sales underpinned corn prices.

Export demand: Purchaser Commodity Tonnage Del date China Corn 100,000 Sep 95-Aug 96 Totals: Corn 100,000 tonnes. Date Change Year ago Truck bids: 08/02/95 08/01/95 08/03/94 Wheat: Kansas City (HRW, ORD) 4.67-4.70 dn 28-30 3.52-3.53 Minneapolis (DNS, 14%) 4.83 dn 30 3.78 1/2 Portland (SW) 4.60 dn 24 3.52-3.53 St. Louis (SRW) 4.16-4.18 dn 22-23 3.14-3.17 Corn, US 2 Yellow: Kansas City 2.84-2.87 dn 5-4 2.23-2.25 Minneapolis 2.46 dn 3 1/2 2.10 1/4 Southern Iowa 2.64-2.68 dn 6-3 2.17 2.20 Omaha 2.68 dn 4 2.13 Soybeans, US 1 Yellow: Kansas City 6.03-6.04 dn 6 5.65-5.66 Minneapolis 5.67 1/2 dn 1/2 5.57 1/2 Southern Iowa 5.84-5.91 dn 7-6 5.71-5.74 Cen IL Processors 5.91-6.09 1/2 dn 7-5 1/2 5.68 1/2-5.76 1/2 Futures Close: Kansas City (Sept) Wheat 4.49 3/4 dn 25 3.43 3/4 Minneapolis (Sept) Wheat 4.53 dn 20 3.38 1/2 Chicago (Sept) Wheat 4.42 1/4 dn 20 3.34 Chicago (Sept) Corn 2.79 dn 3 1/2 2.15 1/4 Chicago (Dec) Corn 2.78 1/4 dn 4 2.19 3/4 Chicago (Aug) Soybeans 5.96 1/2 dn 5 1/2 Chicago (Nov) Soybeans 6.05 1/2 dn 8 1/2

5.59 1/2 Export Bids: Barge or rail, Port of New Orleans or North Texas Gulf. US 1 HRW Wheat, Ord. Protein: 4.96 3/4-4.97 3/4 dn 25 3.81 3/4-3.82 3/4 US 2 SRW Wheat: 4.65 1/4-4.66 1/4 dn 21 3.38-3.40 US 2 Yellow Corn: 3.14-3.15 1/2 dn 4 1/2-5.24-2.40 1/4 US 2 Yellow Sorghum: Rail 5.27 dn 7 4.28 Barge 5.47-5.49 dn 7-9 4.32 US 1 Yellow Soybeans: 6.43 1/2-6.45 1/2 dn 4 1/2-5 5.95 1/2-5.98

NY Phil Frozen Eggs

ATLANTA, GA
AUGUST 1, 1995

Prices were unchanged. The market tone was steady. Demand was still light as buyers resisted higher prices, and many buyers had already purchased for the third quarter. Floor stocks were adequate. Shell egg offerings were also adequate, and breakers sometimes sold excess eggs into grading channels.

WHOLESALE SELLING PRICES (CENTS PER POUND IN 30 LB. CONTAINERS) TRUCKLOTS LTL (MIN. 25 CONT.) RANGE MOSTLY RANGE WHOLE 52-55 53-54 55-62 BLENDS (f) TFEWR 64-80 WHITES 38-42 40-41 43-50 SUGARED YOLKS (MIN 43% SOLIDS) 62-66 64-65 66-75 SALTED YOLKS (MIN 43% SOLIDS) 60-64 62-63 64-70 (f) - WHOLE PLUS YOLK PLUS SWEETENER, GENERALLY 28-32% EGG SOLIDS.

Belleville Poultry

Belleville, Pa.
Wednesday, August 2, 1995
Report supplied by Auction

Geese: 1.00 ea.
Turkeys: 7.50-9.00 ea.
Guineas: chicks 1.70 ea.
Roosters: 4.00-6.75 ea.
Bantams: .25-2.00 ea.
Heavy hens: 3.50 ea.
Silkies: none.
Muscovy hens: 4.00 ea.
Mixed ducks: none.
Muscovy drakes: 7.00-8.25 ea.
Guinea pigs: none.

Barn pigeons: 1.75 ea.
Fancy birds: 1.75-5.25 ea.
Quail: .80-2.25 ea.
Peacocks: none.
Pheasants: chicks 1.00 ea.
Rabbits: under 4 lbs. .50-3.00 ea., 4-6 lbs. 3.60-5.40 ea., over 6 lbs. 4.00-7.00 ea.

Heinsey's Poultry

EAST PETERSBURG, PA
AUGUST 3, 1995

PRICES PAID PER POUND, EXCEPT AS NOTED RANGE

Goats 40.00 - 77.00 ea.
Kid Goats 26.00 - 45.00 ea.
Doves 2.50 - 4.50 ea.
Pullets 4-6 .30 - .40
Muscovy Ducks - Drakes 1.30 - 1.44
Muscovy Ducks - Hens 1.20 - 1.34
Pekin Ducks .50 - .64
Red Fowl 4-4.5 .25 - .42
Red Fowl 5-6 .40 - .74
Crossbred Fowl 5-9 .30 - .54
Crossbred Roosters 4-6 .30 - .94
Crossbred Roosters 7-11 .26 - .92
Banty Roosters 3.50 - 6.50 ea.
Banty Hens 1.50 - 3.00 ea.
Silkies 2.00 - 3.25 ea.
Geese 9-12 .10 - .28
Pigeons 1.50 - 2.25 ea.
White Pigeons 3.00 - 3.75 ea.
Rabbits 4-6 .50 - .82
Rabbits 7-11 .50 - .74
Bunnies .75 - 2.00 ea.
Guinea Pigs 1.00 - 3.50 ea.
Total Coops Sold 720

OK City Feeder Cattle

OKLAHOMA CITY, OK
AUGUST 2, 1995

Compared to last week: Feeder steers and heifers 1.00-2.00 higher. Steer calves 2.00-3.00 higher; heifer calves 1.00-2.00 higher. Demand very good with active trading for all classes. Declines in grain futures and bullish ideas on slaughter cattle prices has combined to bolster demand for feeder cattle. Quality of supply plain thru attractive. Weigh-ups mostly average, end full. Flesh condition medium to thin, few fleshy. Weather conditions this week a bonus for this time of summer. Showers are entering the state from the Texas tropical depression and temperatures are in the 80's. Slaughter cows and bulls steady to 1.00 higher; good demand noted for 350 cows and bulls sold with 60 percent of supply to packers.

Receipts this week 6,575; last week 8,706; last year 10,113. Supply consisted of 76 percent yearlings and calves over 600 lbs; 19 percent calves under 600 lbs; 5 percent cows and bulls.

Feeder Steers: Medium and Large 1 400-500 lbs (450 lbs) 71.00-79.50 (76.47); 500-600 lbs (550 lbs) 68.25-73.50 (71.86); 600-700 lbs (650 lbs) 67.00-71.25 (69.26); 700-800 lbs (750 lbs) 66.00-69.25 (67.86); 800-900 lbs (850 lbs) 64.00-67.75 (65.94); 900-950 lbs (927 lbs) 61.50-64.00 (62.79); 950-1000 lbs (967 lbs) 60.75-62.75 (61.80).

Holstein: Large 2 325-400 lbs 54.00; pkg 535 lbs 53.00; 600-700 lbs 51.50-55.50; 700-800 lbs 48.25-50.00; 800-925 lbs 49.75-51.00.

Feeder Heifers: Medium and Large 1

450-500 lbs (467 lbs) 61.25-64.25, lot BWF 66.00 (63.98); 500-600 lbs (550 lbs) 61.50-66.75 (64.90); 600-700 lbs (650 lbs) most 62.75-66.00, some calves down to 61.50, some yearlings to 67.00, (64.56); 700-800 lbs (750 lbs) 62.50-65.25 (63.48); 800-850 lbs (826 lbs) 60.00-64.00 (62.27); 850-900 lbs (888 lbs) 57.75-58.00 (57.91).

Slaughter Cows: Cutter, boning and breaking Utility average dressing 36.50-39.50; high dressing 40.00-43.50; low dressing 33.50-37.00. Canner and low Cutter 30.50-32.50.

Slaughter Bulls: Yield Grade 1 1300-2000 lbs average dressing 47.00-49.00; high dressing 49.50-51.00; high dressing and high boning 53.00-54.25; low dressing 44.00-46.00.

Replacements: Pretested for bangs, pregnancy, and age Medium and Large 1 High quality single head sales: 3-5 year old 1050-1250 lbs 6-7 months bred 530.00-590.00.

Average quality single head sales: 5-7 year old 925-1300 lbs 4-6 months bred 415.00-480.00; 9-10+ year old 900-1350 lbs 4-8 months bred 375.00-470.00. Pairs: Medium and Large 1 4-5 yr old 950-1050 lbs 100-150 lb calf high quality 630.00-690.00; 6-7 yr old 1000-1250 lbs 100-250 lb calf high quality 650.00-710.00; 5-8 yr old 800-1250 lbs 100-300 lb calf avg quality 525.00-610.00; 9-10+ yr old 950-1325 lbs 100-250 lb calf avg quality 500.00-560.00.



WHAT'S AHEAD FOR CORN & SOYBEAN

- We Deal In Futures And Options
- Our Only Business is Commodity Futures And Options
- In Allentown Area and Same Principals For Over 20 Years
- When Buying options, your risk is limited to the loss of the premium paid plus all transaction costs. Buying futures and options have inherent risks and should be done only with risk capital.

FOR INFORMATION...LITERATURE... CHARTS...PLEASE CALL (610) 366-7979 or 800-543-8939

LEHIGH VALLEY FUTURES INC. Commerce Plaza, Suite 249, 5000 Tilghman Street, Allentown, Pa 18104

The risk of loss in trading futures and options on futures can be substantial. Futures and options trading may not be suitable for everyone. You should carefully consider the risks in light of your financial condition in deciding whether to trade.

LATE ENTRY FOR NEW HOLLAND SALES STABLES, INC.

DAIRY SALE WED., AUG. 9, 1995

SPECIAL MENTION

Service Age BROKER son. Dam-Windy Knoll View Petrina ET VG 1st Sr. 2 yr. old 1994 PA. Spring Show Nominated Jr. All American yrling 1993

GrDam EX 93 EEE Record to 27,000M 4.5T 3.3 Pro. 1st E. Natl. Show DRY 5 yr. old 1992

(More consignments Page B39 this issue)



Diffenbach Auction Inc.

100 West Jackson Street • New Holland, Pennsylvania 17557
Office: (717) 355-7253 • FAX: (717) 355-9547

HAY & GRAIN SALE EVERY MONDAY - 10:00 A.M.

FRI.	AUG. 11	FARM EQUIP., TRACTORS & FARM SUPPLIES	9:00 AM
WED	SEPT. 6	WINROSS TRUCKS & TOYS	6:30 PM
FRI.	SEPT. 8	FARM EQUIP., TRACTORS & FARM SUPPLIES	9:00 AM

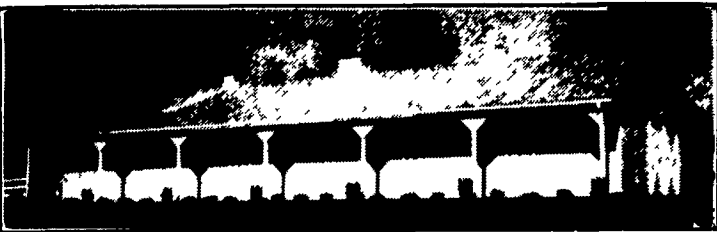
EQUIPPED FOR AN AUCTION AT YOUR PLACE OR OURS
ALAN DIFFENBACH AUCT. - AU2258-L

AGRI-INC.

Custom Built Farm Buildings
Designed To Your Needs



RIDING ARENA



HORSE STALL BARN

Let Our Experience Work For You

- Dairy Complexes And Replacement Stock Facilities
- Horse Stall Barns And Riding Arenas
- Workshop And Machinery Storage Buildings
- Timber Column Building For Light Commercial



AGRI-INC. The Construction Professionals

151 E. Farmersville Road, Ephrata, PA 17522
(717) 354-4271

Serving The Agriculture Industry For Over 25 Years



NEW HOLLAND SALES STABLES INC.

THE ACTION AUCTION

Livestock Is Our Only Business

MONDAY



SLAUGHTER HOGS EARLY BIRD HOG SALE 7:30 A.M.

Sell Your Hogs At New Holland Sales Stables, Inc See them weighed, sold and pickup your check



10:00 A.M. HORSES MULES



1:30 P.M. BEEF SALE 2:30 P.M. SHEEP, GOATS & CALVES



THURSDAY

Beef Auction 10:00 A.M.



BULLS, STEERS, BEEF COWS

1:00 P.M. STOCKERS & FEEDERS



11:00 A.M. GOATS SHEEP CALVES



WEDNESDAY

HEIFER SALE 11:00 A.M. COW SALE 12:00 NOON



We have the usual run of 50 to 100 Heifers, all ages Loads of fresh cows and springers from our regular shippers Also some local fresh cows and springers



1:30 P.M. FEEDER PIG SALE

Pigs are accepted after 6:30 A.M. State graded from 8 to 12 Dairy Barn and Feeder Pig Barn are cleaned and disinfected weekly for your protection

NEW HOLLAND SALES STABLES, INC.

12 Miles East of Lancaster Off Route 23, New Holland, Penna.

MANAGERS

Norman & David Kolb- 717-397-5538
Field Representatives
Luke Eberly - 215-267-6608 738-1665
Homer Eberly - 215-267-3047
Ron Ranck - 717-656-9849

Sale Barn Officer Manager
Roger Floyd - 717-354-4341
FAX #717-355-0706

Order Barn:
Paul Good - 215-445-6662