

Hackettstown Poultry & Egg

Hackettstown, N.J.
Report Supplied by Auction
Tuesday, August 1, 1995
Report Supplied by Auction
HEAVY FOWL .40-.85.
LEGHORN FOWL .45-.50.
MIXED FOWL .75.
ROASTERS .40.
FRYERS .20-.45.
GESE .85.

BANTAMS EACH .20-.45.
ROOSTERS .70-1.00.
BUNNIES EACH .50-5.00.
DUCKS .35-.70.
RABBITS .40-.95.
EGGS: WHITE EXTRA LARGE &
JUMBO .75-.94, LARGE .45-.80,
MEDIUM .33-.55. BROWN EXTRA
LARGE & JUMBO .70-.96, LARGE
.69-.81, MEDIUM .56-.60.

NE Chicken Pts 1&2

AUGUST 2, 1995

Trucklot buying interest was light and disappointing. Offerings were limited but usually more than adequate for the unaggressive buyer interest. Retail and distributive movement was slow in developing for the first of the month. Trade sentiment was at best steady.

PRICES PAID PER POUND, ICE
PACKED AND CO2 PACKED

BROILER/FRYER PARTS, DELIV-
ERED TO FIRST RECEIVERS IN POOL
TRUCKLOT AND TRUCKLOT QUAN-
TITIES. ITEM CURRENT NEGOTI-
ATED TRADING* BREAST - B/S (W
& W/O TENDERS) 185 BREAST - WITH
RIBS 92-93 BREAST - LINE RUN 92
LEGS 45-46 LEG QUARTERS (BULK)
37-38 DRUMSTICKS 49-50 THIGHS
30-31 WINGS (WHOLE) 69-70 BACKS

AND NECKS (STRIPPED) 10-12 LIV-
ERS (5 POUND TUBS) 25 GIZZARDS
(HEARTS) 40-45 INCLUDES NEW
YORK CITY METROPOLITAN AREA,
NORTHERN NEW JERSEY, MASSA-
CHUSETTS, CONNECTICUT, RHODE
ISLAND, AND PENNSYLVANIA
(NORTHEAST OF HARRISBURG). *
TODAY'S NEGOTIATED SALES AS
OF 11:30 A.M.

Pa. Grain

July 31, 1995

Report supplied by PDA.
COMPARED WITH LAST
MONDAY'S MARKET FOR
SOUTHEASTERN, CENTR-
AL, AND SOUTH CENTR-
AL PA: CORN UNEVEN .05
LOWER TO .10 HIGHER,
WHEAT UNEVEN, MOST-
LY .10 TO .15 LOWER,
BARLEY STEADY, OATS
STEADY TO .05 LOWER,
SOYBEANS MOSTLY .10
LOWER, EAR CORN
MOSTLY STEADY.

SOUTHEASTERN PEN- NSYLVANIA

CORN NO. 2-Y RANGE
2.99-3.40, AVERAGE 3.22,
CONTRACT FOR
HARVEST 2.78-2.99;
WHEAT NO. 2 RANGE
3.94-4.37, AVERAGE 4.11;
BARLEY NO. 3 RANGE
1.50-1.80, AVERAGE 1.62;
OATS NO. 2 RANGE
1.40-1.60 FEW REPORTED
1.30, AVERAGE 1.46; SOY-
BEANS NO. 1 RANGE
5.90-6.20, AVERAGE 6.04,
CONTRACT FOR
HARVEST 5.95-6.15; FEW
REPORTED GR. SORG-
HUM #2 CONTRACT FOR
HARVEST 2.50; FEW
REPORTED PER HUN-
DREDWEIGHT BUCK-
WHEAT CONTRACT FOR
HARVEST 10.90; EAR
CORN RANGE 85.00-97.00,
AVERAGE 90.40.

SOUTH CENTRAL PENNSYLVANIA

CORN NO. 2-Y RANGE
3.00-3.25, AVERAGE 3.13;
WHEAT NO. 2 RANGE
3.53-4.10, AVERAGE 3.83;
BARLEY NO. 3 RANGE
1.45-1.55, FEW REPORTED
1.80, AVERAGE 1.55; OATS
NO. 2 RANGE 1.30-1.50,
AVERAGE 1.41; SOY-
BEANS NO. 1 RANGE
5.50-6.05, AVERAGE 5.75;
EAR CORN RANGE
70.00-90.00, AVERAGE
80.57.

SOUTHEASTERN, CENTR- AL & SOUTH CENTRAL SUM- MARY

CORN NO. 2-Y RANGE
2.80-3.40, AVERAGE 3.15;
WHEAT NO. 2 RANGE
3.70-4.37, AVERAGE 3.99;
BARLEY NO. 3 RANGE
1.40-1.80, AVERAGE 1.59;
OATS NO. 2 RANGE
1.30-1.70, AVERAGE 1.46;
SOYBEANS NO. 1 RANGE
5.60-6.20, AVERAGE 5.92;
EAR CORN RANGE
70.00-97.00, AVERAGE
84.42.

CENTRAL PENNSYLV- ANIA

CORN NO. 2-Y RANGE
2.80-3.55, AVERAGE 3.06;
WHEAT NO. 2 RANGE
3.70-4.10, AVERAGE 3.86;
BARLEY NO. 3 RANGE
1.40-1.70, AVERAGE 1.56;
OATS NO. 2 RANGE
1.30-1.70, AVERAGE 1.50;
SOYBEANS NO. 1 RANGE
5.60-6.00, AVERAGE 5.80;
EAR CORN RANGE
70.00-80.00, AVERAGE
74.00.

WESTERN PENNSYLV- ANIA

CORN NO. 2-Y RANGE
2.65-3.20, AVERAGE 2.93;
WHEAT NO. 2 RANGE
3.50-4.10, AVERAGE 3.79;
BARLEY NO. 3 RANGE
1.59-1.65, AVERAGE 1.62;
OATS NO. 2 RANGE
1.20-1.85, AVERAGE 1.57;
SOYBEANS NO. 1 RANGE
5.90-6.00, AVERAGE 5.95;
EAR CORN RANGE
55.00-60.00, AVERAGE
57.50.

MONTH AGO

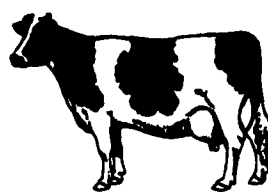
CORN NO. 2-Y 2.98;
WHEAT NO. 2 3.86; BAR-
LEY NO. 3 1.56; OATS NO. 2
1.58; SOYBEANS NO. 1
5.71; EAR CORN 81.51.

YEAR AGO

CORN NO. 2-Y 2.65,
WHEAT NO. 2 3.11; BAR-
LEY NO. 3 1.75; OATS NO. 2
1.45; SOYBEANS NO. 1
5.85; EAR CORN 79.11.

BEAT THE HIGH PRICE OF CORN

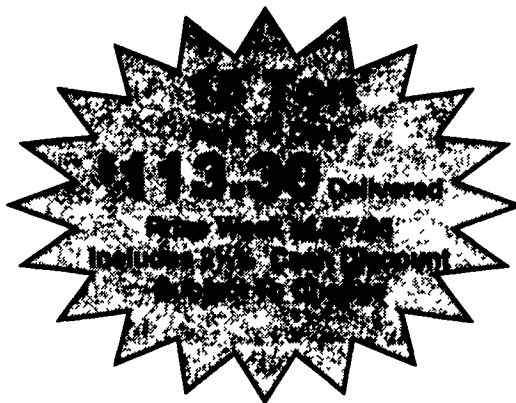
If you are running out of corn
and looking for a high quality energy
source for your cows, you need...



PENNFIELD'S ALL NEW BARLEY BLEND 10 1/2% #79506



This product contains
Pennfield's new
"Flat Rolled" Barley,
Non Fortified Pellet,
Molasses and
Flo-Coat.



Performance Top Dress - LTD 22%

LTD 22% is a high performance Top Dress from Pennfield. It contains select sources of high quality blood meal and fish meal. Blood meal is an excellent by-pass source of the amino acid Lysine. Fish meal, an excellent source of by-pass protein, has also been shown to increase rumen bacterial protein synthesis - Rumen bugs work harder.

Combine these features with the steam crimped soybeans, steam flaked corn, balanced proteins and carbohydrates, plus vitamins and minerals and you have Pennfield's LTD Top Dress.

Cows  **LTD 22%**

\$247.13 Delivered

1 Ton Bulk

Price Week of 8/7/95

Includes 2% Cash Discount
Subject To Change



Round The Clock Service - 24 Hours Per Day

pennfield feeds

Office 1-800-732-0467 Orders 1-800-995-0333

Quality - Value - Service