

**HOG MARKETS**

**State Graded Feeder Pig Sale**

Carlisle Livestock Market, Inc.  
Friday, July 28, 1995  
RESULTS ON 1656 PIGS.  
TREND: COMPARED TO FRIDAY, JULY 14 STATE GRADED SALE, PIGS WERE 10.00 TO 15.00 LOWER. ALL PIGS WERE WEIGHED ON ARRIVAL AND SOLD BY THE HUNDRED WEIGHT.  
US #1&2: 1026 HEAD. 59 HEAD 35-359LBS. 50.00-65.00; 148 HEAD 42-49 LBS. 52.00-60.00; 478 HEAD 50-59 LBS. 48.00-57.00; 341 HEAD 60-75 LBS. 48.00-52.00.  
US #2: 366 HEAD. 36 HEAD 18 LBS. 40.00; 96 HEAD 44-49 LBS. 40.00-47.00; 186 HEAD 52-59 LBS. 42.00-49.00; 48 HEAD 60-70 LBS. 45.00-46.00.  
US#2-3: 40 HEAD 38-49 LBS. 36.00-41.00; 76 HEAD 52-100 LBS. 25.00-40.00.  
AS IS AND UTILITIES: 148 HEAD, 12-62 LBS. 11.00-22.00.  
NEXT STATE GRADED FEEDER PIG SALE FRIDAY, AUG. 11. GRADING 7-11 A.M. SALE AT 1:30 P.M.

**New Holland Feeder Pigs**

New Holland, PA  
Wed., Aug. 2, 1995  
Report Supplied by USDA  
TODAY: 826 HEAD  
LAST WEDNESDAY: 1172 HEAD  
LAST YEAR: 796 HEAD  
TREND: COMPARED TO LAST WEDNESDAY, FEEDER PIGS 3.00-10.00 LOWER. ALL PIGS WEIGHED ON ARRIVAL AND SOLD BY THE HUNDRED WEIGHT.  
GRADE 1-2: 27 HEAD 31 LBS. 62.00, WEIGHTED AVERAGE 31.00, WEIGHTED PRICE 62.00; 206 HEAD 40-46 LBS. 54.00-59.00, WEIGHTED AVERAGE 42.82, WEIGHTED PRICE 56.63; 200 HEAD 50-57 LBS. 52.00-61.00, WEIGHTED AVERAGE 53.32, WEIGHTED PRICE 55.86; 33 HEAD 65-66 LBS. 47.00, WEIGHTED AVERAGE 65.21, WEIGHTED PRICE 47.00; 14 HEAD 70 LBS. 50.00, WEIGHTED AVERAGE 70.00, WEIGHTED PRICE 50.00; 6 HEAD 85-91 LBS. 38.00-41.00, WEIGHTED AVERAGE 89.00, WEIGHTED PRICE 38.96.  
US#2: 69 HEAD 33-38 LBS. 53.00-58.00, WEIGHTED AVERAGE 36.01, WEIGHTED PRICE 56.31; 68 HEAD 40-43 LBS. 48.00-52.00, WEIGHTED AVERAGE 41.29, WEIGHTED PRICE 50.25; 17 HEAD 54 LBS. 50.00-51.00, WEIGHTED AVERAGE 54.00, WEIGHTED PRICE 50.45.  
US#2-3: 36 HEAD 34-64 LBS. 30.00-40.00, WEIGHTED AVERAGE 43.69, WEIGHTED PRICE 34.47.

**New Holland Hogs**

LANCASTER, PA  
JULY 31, 1995  
TODAY 1777  
LAST MONDAY 1403  
LAST YEAR 966  
TREND: Compared to last Monday barrows and gilts 1.00 higher. US 1-2 215-260 lbs 48.00-49.00 US 1 230-250 lbs 49.25-50.35 US 1-3 210-265 lbs 47.00-48.00 US 2-3 210-270 lbs 44.50-47.00 270-300 lbs 42.75-44.50

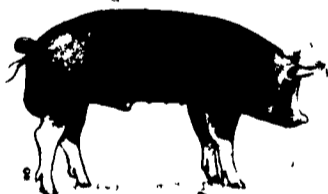
**Indiana Hogs**

SPRINGFIELD, IL  
AUGUST 3, 1995  
Barrows and Gilts: Mostly Steady. Demand moderate. Country Plants US. 1-3 230-260 lbs. 45.50-47.50 47.00-48.50 Few 47.75 US. 2-3 230-260 lbs. 40.50 45.50 210-230 lbs. 35.50-40.50  
Sows: Steady to Weak. US. 1-3 300-500 lbs. 28.50-30.50 500-650 lbs. 30.50-32.50 Few over 650 lbs. 23.50-34.00  
Boars: 28.50-30.00 Preliminary estimate: 32,000  
\*Receipts have changed due to change in reporting base.

**Lancaster Hogs**

Lancaster Stockyards  
Saturday, July 29, 1995  
Report supplied by auction

There will no longer be a sale auction on Saturday. Sales will be held Monday and Wednesday.



**HAY & GRAIN MARKETS**

**Diffenbach Auction Center**

New Holland, Pa.  
Monday, July 31, 1995  
Report Supplied by Auction  
TOTAL LOADS: 64.  
ALFALFA: 50.00-120.00.  
MIXED HAY: 50.00-147.00.  
TIMOTHY: 106.00-165.00.  
HAYLAGE: 30.00.  
ORCHARD GRASS: 40.00.  
STRAW: 45.00-100.00.  
EAR CORN: 99.00-102.00.

**Kutztown Produce Auction Hay Auction**

Report Supplied by Auction  
Saturday, July 29, 1995  
TOTAL LOADS: 12.  
ALFALFA HAY: 62.50.  
TIMOTHY HAY: 46.00-92.00.  
MIXED HAY: 60.00-120.00.  
WHEAT STRAW: 53.00-61.00.  
OAT STRAW: 49.00-57.00.

**Leinbach's Hay**

Shippensburg, PA  
July 29 and August 1  
Report Supplied by Auction  
30 LOADS  
ALFALFA: 40.00-74.00.  
MIXED HAY: 50.00-95.00.  
TIMOTHY: 35.00-60.00.  
BROME GRASS: 38.00-50.00.  
ORCHARD GRASS: 43.00-62.00.  
STRAW: 38.00-70.00.  
EAR CORN: 85.00-88.00.  
MULCH HAY: 15.00-30.00.

**Good's Hay**

Leola, Pa.  
Wed., August 2, 1995  
Report Supplied by Auction  
TOTAL LOADS: 33.  
ALFALFA: 55.00-157.00.  
MIXED HAY: 70.00-142.00.  
CORN: 87.00-107.00.  
TIMOTHY: 70.00-107.00.  
STRAW: 64.00-76.00.  
GRASS: 70.00-96.00.

**Dewart Hay**

Dewart, PA.  
Monday, July 31, 1995  
Report Supplied by Auction  
5 LOADS OF HAY, 47.00-83.00.  
STRAW: 4 LOADS, 35.00-59.00.  
OATS: 2.00 BU.  
CORN: 4 LOADS, 79.00-83.00.

**Kirkwood Hay Auction**

Kirkwood, Pa.  
Tuesday, August 1, 1995  
Report Supplied by Auction  
29 LOADS OF HAY.  
MIXED: 1ST CUTTING 93.00.  
TIMOTHY: 136.00.  
ALFALFA: 2ND CUTTING 35.00-151.00.  
CLOVER: 70.00.  
GRASS: 90.00-136.00.  
WHEAT STRAW: 57.00-96.00.  
BARLEY STRAW: 61.00.  
OAT STRAW: 64.00.  
RYE STRAW: 60.00.  
OATS: 2.00 BU.  
SALE TIME 11 A.M.

**Middleburg Hay**

Middleburg, PA  
Tues., August 1, 1995  
Report supplied by auction  
37 TOTAL LOADS, 12 LOADS OF HAY.  
ALFALFA: 58.00-77.50.  
MIXED HAY: 48.00-80.00.  
TIMOTHY: 97.50-100.00.  
STRAW: 7 LOADS, 30.00-60.00.  
EAR CORN: 15 LOADS, 74.00-90.00.  
RYE: 5.00 BAG.  
OATS: 1.50-1.55 BU.

**Green Dragon Hay**

Ephrata, Pa.  
Friday, July 28, 1995  
Report Supplied by Auction  
57 TOTAL LOADS.  
MIXED HAY: 10 LOADS, 62.00-155.00.  
ALFALFA: 4 LOADS, 71.00-96.00.  
TIMOTHY: 3 LOADS, 73.00-117.00.  
STRAW: 26 LOADS, 39.00-71.00.  
EAR CORN: 9 LOADS, 95.00-118.00.  
ORCHARD GRASS: 1 LOAD AT 60.00.  
OATS: 4 LOADS, 1.50-2.30 BU.

**Vintage Hay**

Paradise, PA  
Thurs., August 3, 1995  
Report Supplied by Auction  
ALFALFA: 56.00-85.00.  
STRAW: 51.00-66.00.  
CLOVER: 65.00-69.00.  
MIXED HAY: 62.00-82.00.  
TOTAL 15 LOADS.  
SALE TIME 1 P.M.

**Regional Hay**

July 31, 1995  
Eastern, Pa.  
HAY & STRAW MARKET FOR EASTERN PA. (ALL HAY NO. 2 AND BETTER. PRICES PAID BY DEALERS AT THE FARM & PER TON.) HAY UNEVEN, STRAW STEADY TO 10.00 LOWER.  
ALFALFA 50.00-100.00; MIXED HAY 50.00-100.00; TIMOTHY 50.00-100.00; STRAW 50.00-65.00; MULCH 20.00-45.00.

SUMMARY OF LANCASTER CO. HAY AUCTIONS FOR WEEK ENDING 7/28/95. PRICES PER TON: LOADS: 90 HAY, 70 STRAW & 29 EAR CORN.  
ALFALFA 50.00-120.00; MIXED HAY 55.00-138.00; TIMOTHY 55.00-120.00; STRAW 45.00-92.00; EAR CORN 92.00-110.00.

SUMMARY OF CENTRAL PA. HAY AUCTIONS FOR WEEK ENDING 7/28/95. PRICES PER TON: LOADS: 61 HAY, 30 STRAW & 26 EAR CORN.  
ALFALFA 50.00-90.00; MIXED HAY 47.00-90.00; TIMOTHY 66.00-100.00; STRAW 45.00-65.00; EAR CORN 76.00-93.00.

**Westminster Hay**

Westminster, Md.  
Tuesday, August 1, 1995  
Report Supplied by Auction  
95 LOTS.  
ALFALFA: .25-3.00 BALE.  
TIMOTHY: 102.50, 1.40-2.15 BALE.  
MIXED HAY: .10-3.00 BALE, 17.00 LARGE ROUND.  
GRASS: .35-2.10 BALE, 16.00 LARGE ROUND.  
STRAW: .50-1.80 BALE.

**North Jersey Market**

Hackettstown, N.J.  
Report Supplied by Auction  
Tuesday, August 1, 1995  
Hay—Straw & Grain Report  
ALFALFA: 8 BALES, 1.50-2.75.  
RYE STRAW: 2 BALES, .50 AND .75.  
MIXED HAY: 9 BALES, .50-2.00.  
TIMOTHY: 10 BALES, 1.25-2.50.  
GRASS: 9 BALES, .50-2.00.  
WHEAT STRAW: 5 BALES, .35-1.00.  
OAT STRAW: 3 BALES, .60-.75.  
EAR CORN: 1 BAG SPLIT AT 2.75 AND 3.50.  
SHELLED CORN: 1 BAG AT 3.25.  
OATS: 1 LOAD AT 6.00.  
CRACKED CORN: 1 BAG AT 3.25.  
TOTAL: 50 LOTS.

**PIGS**  
STATE GRADED SALE  
FRIDAY  
AUG. 11  
1:30 P.M.  
AT  
**Carlisle**  
LIVESTOCK MARKET, INC.  
Exit 12 Off I-81 turn South  
(717) 249-4511 or  
Evenings Jim, 249-2359

**Carlisle**  
Livestock Market, Inc.  
**FED CATTLE SALE**  
2nd Tuesday of every month  
Tues., Aug. 8 7 PM  
Exit 12 off I-81 turn South  
Early Bird Pens  
Close 2 P.M.  
Market (717) 249-4511  
Jim (717) 249-2359

**KIRKWOOD HAY AUCTION**  
Hay, Straw and Grain Auction  
EVERY TUESDAY  
11:00  
Located Rt. 472 5 miles south of Quarryville or 6 miles north of Oxford corner of Rt. 472 and Noble Road.  
Lloyd H. Kreider, Auctioneer  
AU-000513L  
No out of state checks

**PENNFIELD GRAIN BANK**  
Pennfield Offers A Sound Program For The Dairy Farmer To Use His Grain "Same As Cash" To Reduce His Monthly Feed Bill And To Avoid Having To Take "Harvest Price" For His Grain  
Prices Week Of 8/7/95  
Corn \$3.32 Bu.  
Soybeans \$5.99 Bu.  
Barley \$1.87 Bu.  
• No Storage Charges  
• Prices Updated Weekly  
• Grain Bank Balance Shown On Each Invoice  
• No Hidden Charges  
For every ton of qualifying dairy feed purchased you will receive one ton of grain back hauled at no charge

**INDEX**  
**Lancaster Farming**  
Four Sections

**COLUMNS**  
Now is the Time..... A10  
Poultry Pointers..... A32  
All Gardens ..... B 4  
On Being A Farm Wife..... B 7  
Ida's Notebook..... B17  
Grazing Gazette ..... C 7

**DEPARTMENTS**  
Editorial ..... A10  
Farm Calendar..... A10  
Farm Forum ..... A10  
Futures ..... A16  
Fair Happenings..... A30  
Mailbox Markets..... B18  
Sale Reports ..... B18  
Public Auction Register..... B19  
Business News ..... C 6  
Classified Ads..... C 7, D 6

**FEATURES**  
Lebanon Dairy Show ..... A20  
Lancaster Holstein Fun Day A32  
Ag Showcase..... A25  
Lebanon Leadline..... A32  
S.W. Holstein Show..... A34  
Troy Fair ..... A35  
N.W. Holstein Show ..... A38

**DAIRY**  
DHIA Focus ..... A36  
Chester Milk Lines..... A39

**HOME AND YOUTH**  
Homestead Notes ..... B 2  
Home On The Range ..... B 6  
Cook's Question Corner ..... B 8  
Kid's Korner ..... B10  
You Ask, You Answer..... B20

Walter M. Dunlap and Sons offers all cattle feeders two marketing days. Give us a call for advice and marketing conditions.

**MONDAYS OR WEDNESDAYS**

Consign With Us - For The Marketing Edge

**Next Feeder Cattle Sale**  
Wednesday, August 9 - 12 Noon

**Walter M. Dunlap and Sons**  
Lancaster Stockyards  
Tel. (717) 397-5136

An Old Line Commission Firm Keeping Ahead With The Times