



**DUMP TRAILERS**  
Self-Contained  
Removable Sides  
Electric Brakes

Size	GVW	Price
6x10	7000#	\$3199
6x10	10000#	\$3495
7x12	10000#	\$4500

Ringo Hill Farms Equipment Co., Inc.  
1624 Route 212 Quakertown, PA 18951  
Phone (610) 346-3410 Fax (610) 346-8041

'95 Dodge Larmie SLT 2500, 4x4, 360 Magnum, auto, PS, PB, PW, PDL, cruise, tilt, air, 8,800 GVW, 8,000 miles w/balance of factory warranty, dark green & silver, like new, \$22,900. 717-733-2873

BATTERIES \$25-\$35. Let us recondition your old battery and save over 50%. We buy old batteries. PowerPro Battery, 1124 Elizabeth Ave., beside Lancaster Stockyard, 717/999-9545.

Elevating or power fifth wheel, excellent working condition, good for jockey truck, \$2,900. (814)467-4764.

FOR SALE: 12' flat bed with 4' plywood sides, Galon dump with steel floor, good condition, \$1200 OBO. Berks. 610-682-6257

20' Stake Bed w/All Side and Rear Rack, Like New. From Truck w/Only 34,000 Mi. \$1600. (717)898-0041.

21' steel flat truck bed w/3 strap tighteners, good condition, \$675. 215-256-1642.

(2) new 11:00R22 tube type tires and rims, standard tread, bargain, (717)263-4139.

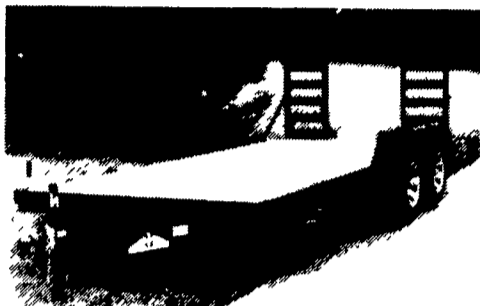
Glick Stock Trailer: 18' long, 6'6" wide, 6'8" high, good condition. (717)872-0786.

**UTILITY TRAILERS FOR ALL YOUR NEEDS AT HOSTETLER'S**



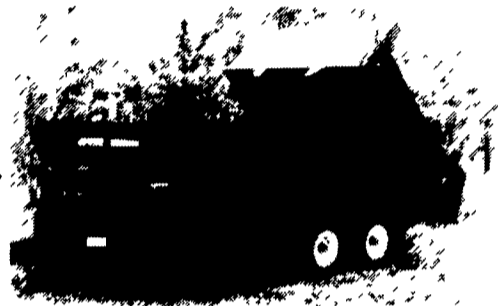
**18' GOOSENECK COMBO TRAILER**  
Heavy Duty Angle Sides for Double Deck Flooring, Adjustable Gooseneck, Oak Floor, 9950# GVW, Ramps.  
**ONLY \$2,995**  
14,000# GVW... **\$3,350**

**16' BUMPER PULL COMBO TRAILER**  
Same Features as Gooseneck Above Except in Bumper Pull Form. 9950# GVW  
**Only \$2,495**



**COMBO DUMP TRAILER**  
8' Dump Truck Body with 6' Stake Body in Front, Double Acting Tailgate, Electric Hydraulic Pump, 10,000# GVW, For the Contractor who needs more than just a Dump Trailer  
**\$5,695**

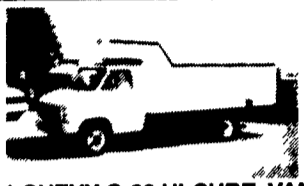
**16' SKID LOADER TRAILER**  
Stake Pockets with Rub Rail, Oak Floor, Loading Ramps, Electric Brakes, 9950# GVW,  
**Just \$2,350**



**Hostetler Truck Bodies & Trailers**  
Rt. 322 Milroy, PA 17063  
**717-667-3921**



**93 DODGE W-350 DUALLY**  
w/Dump Stake Bed, Cummins Turbo Diesel, 5 Spd., Cruise, Tilt, 11,000 GVWR, Silver, 75,000 Mi **\$23,500**



**91 CHEVY G-30 HI-CUBE VAN**  
14 Ft Allm Body w/Liftgate, Over The Cab, AT/OD, PS, PB, 10,000 GVWR, White, 35,000 Mi **\$14,900**



**91 DODGE RAM 250 4X4**  
5.2L V8, At, PS, PB, Bed Liner, White/Maroon, 47,000 Mi **\$11,900**



**92 DODGE GRAND CARAVAN**  
SE, 3.3L V6, AT/OD, AC, Tilt, Cruise, White, 92,000 Mi **\$8,900**



**90 CHEVY G-30 BEAUVILLE**  
5.7L V8, AT/OD, DUAL AC, Tilt, Cruise, 12 Pass, Loaded, Blue, 143,000 Mi. **\$8,900**



**92 VW JETTA GL**  
4 Dr, 5 Spd, AC, Alum. Wheels, Black, 39,000 Mi. **\$9,800**



**PINE TREE MOTORS**

Rt. 322 & Clearview Road, Clay Lancaster Co., PA  
717-738-2242

**LEFEVER BROS. CHEVROLET CHEVY TRUCKS GEO.**

YOUR DIRECT LINE TO GENUINE GM PARTS

**(800) 533-3837**

When you call the number listed above, you'll reach our wholesale parts specialists, who can help you keep your GM repair work moving quickly.

Ask about:

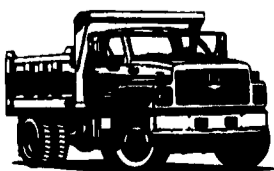
- Specializing in GM Medium Duty Trucks, Current and Obsolete.
- \$500,000 Parts Inventory.
- Parts Locator for Those Hard to Find Items.
- We Ship Anywhere, Local Delivery Available.
- Experienced, Knowledgeable Personnel.

Mon., Tues., Thurs., Fri.  
7:30 a.m.-4:30 p.m.  
Weds. 7:30 a.m.-8:30 p.m.  
Major Credit Cards Accepted

**(717) 432-9697**

Quality Dealer Since 1921  
406 U.S. Rt. 15, Dillsburg, PA 17019

**GM Goodwrench Service**



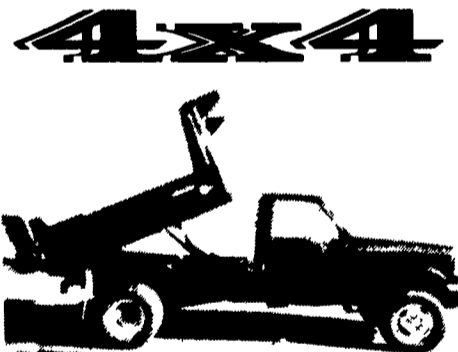
**Kodiak Chevy Trucks CAT DIESEL POWER**

**TRY US! KELLER BROS.**

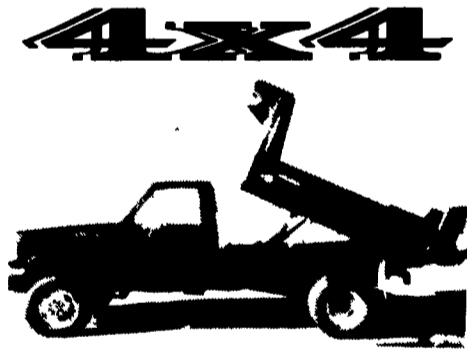
717-949-2000



RD 7, Box 405  
Lebanon, PA  
17042



**1995 SUPER DUTY 10' DUMP 4x4, 7.3L Power Stroke, Turbo Diesel, 5-Spd, Air, 15,000 GVWR**



**1995 F350 8' DUMP 4x4, 7.3L Power Stroke Turbo Diesel, 5-Spd, Limited Slip Rear Axle, 11,000 GVWR**



**1995 F-SUPER DUTY CHASSIS CAB, 137" & 161" Wheel Base, 7.3L Power Stroke Turbo Diesel, 5-Spd., 15,000 GVWR 3 To Choose From!**



**1995 F-SUPER DUTY 12' STAKE BODY DUMP, 7.3L Power Stroke Turbo Diesel, Automatic & 5-Spds. Available! 15,000 GVWR**



**1995 F-SUPER DUTY 8' DUMP, w/Rev. Pack Tool Boxes, 7.3L, Power Stroke Turbo Diesel, 5-Spd., 15,000 GVWR**



**1995 F-SUPER DUTY DUMP, 7.3L Power Stroke Turbo Diesel, 15,000 GVWR, 8' & 10' Bodies Available**