

TRUCKS

The Best Selection of New & Used Trucks Is At Pennsylvania's Leading Truck Source

NEW HOLLAND FORD



1987 GMC TOPKICK
3208 Turbo, 215 hp, CAT
6 sp, AB, PS, AC, Double Frame, 33,000
GVW, with or w/o 20' van body
\$13,750 - without van body

85 Int. S1954 Tandem,
DT 466, 210 hp, 10-speed, AB, PS, 12 F, 34
R, walking beam, double frame, low profile
tires, 176" C-T, good condition
\$14,500

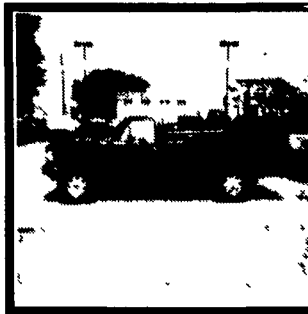
18' Multi-purpose Scott
grain & silage body, ready to mount
your truck or ours.

Other Trucks Available:
90 Ford LN8000, 33,000 GVW
86 GMC Brigadier, 35,000 GVW
79 Int. S2500 dump, 35,000 GVW
85 Ford 1T diesel dump, 11,000 GVW

Sunny Acre Sales
(814) 742-8202
RD 2 Tyrone, PA



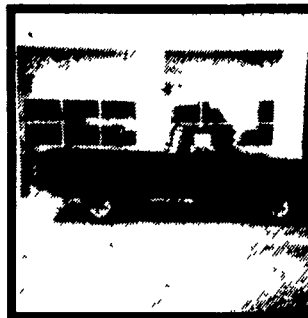
NEW 1995 FORD
F-150
PICKUP
4.9L 6 cylinder engine, 5-speed
transmission, power steering, power
brakes, air conditioning, FM/AM
stereo cassette, argent rear step
bumper & more! #F4934
NOW ONLY \$13,259



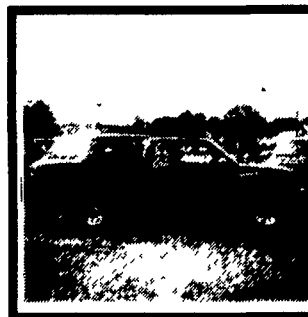
NEW 1995 FORD
F-250
4x4 PICKUP
XLT, 7.5L V8 engine, auto trans with
overdrive, four wheel drive, ps/pb,
power windows & locks, air conditioning,
stereo cassette, trailer tow, forged alum.
wheels, bedliner & much more! #F4625
NOW ONLY \$23,629



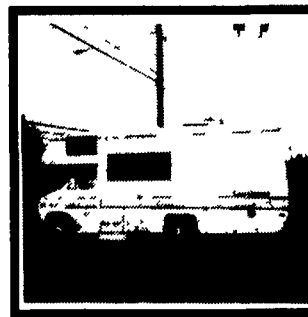
NEW 1995 FORD
F-450 SUPER
DUTY
7.3 liter diesel engine, 5-speed trans, XL trim, all-
terrain tires, chrome appearance pkg, ps/pb, stereo
cassette, interval wipers & much more! #F4752
Work Ready Diesel!
WAS \$28,216! • SAVE \$3277!
NOW ONLY \$24,939



1994 FORD
F-150
PICKUP
V8 engine, automatic
transmission, air conditioning,
FM/AM stereo, one owner, low
miles! Why buy new? #F460A
WAS \$14,975
NOW ONLY \$12,975



1991 TOYOTA
SR-5 4x4
EXTRA CAB
V6 engine, 5-speed transmission, air
conditioning, ps/pb, pwr, windows &
locks, stereo cassette, cruise/tilt, this
one owner truck is gorgeous!
NOW ONLY \$14,975



1990 COACHMAN
G30
MOTORHOME
20 feet, V8 engine, automatic
transmission, kitchen and bath!
One owner and only 24,000 miles!
This is one beautiful vehicle!
#F4520A
NOW ONLY \$16,987

prices include rebate if applicable, tax and fees additional

New Holland
FORD & ISUZU TRUCKS
Route 23, New Holland PA
717-354-4901 • 800-642-8605

'72 Chevy Sgl. axle dump
truck, 671 Detroit, 10
speed trans., 10' box w/
snow plow and spreader
box, \$4000. 717-753-3391.

'66 Mack 14' dump, 237
Jake, 18 speed; 690-B JD
trackhoe, 30" bucket, 30"
pads, A-1 shape. Ask for
John 814-447-5504.



1985 GMC CREW CAB
Sierra Classic dually 4 sp. trans., 6.2 diesel, new
insp., 5th wheel & class 3 hitches, very good
condition. **\$15,000.00**
(717) 336-3652 Evenings after 6:00 p.m.



1983 Chevy Crew Cab Dually
\$3,950. 3/96 Inspection
Heavy 1 Ton (10,000# GVW) - 454 BIG
Block Gasoline Engine Mechanics tool
body, huge ladder rack, 100 gal. tank w/
pump. Needs cosmetics but runs and work
strong
610-796-8597

FISHER TRAILER SALES HORSE STOCK UTILITY

2-Horse trailers starting at \$3000
Stock trailers starting at \$2650
Above prices include 4 wheel brakes,
breakaway, spare holder and wheel,
undercoating, full nose on goosenecks,
delivery in 3 to 4 weeks.

Trailers in stock or custom order.
Open 7 Days by appointment or chance Full notary service
RD #2, McVeytown, PA 17051 Strodes Mills Rt. 22
(717) 242-0941 Turn onto Middle Rd 1/2 mile

CASH FOR USED DIESEL TRUCKS

WE NEED 1/2 TON TO ONE TON:
• FORD DIESELS • DUALIES
• SUPERCABS • DUMPS
• CREW CABS • UTILITY BODY
• DODGE CUMMINGS • FLAT BEDS
• 2WD or 4x4 • CAB & CHASSIS
• SUPER DUTIES

LOW MILEAGE ONLY PLEASE
Before you sell or trade your diesel
in somewhere else for LESS,
CALL US!
We Pay More for Used Diesel Trucks Than Anyone.
TRY US!

717-949-2000  RD 7, Box 405
Lebanon, PA 17042
Ask for Smokey or Kay **KELLER BROS.**



1984 Int S. DT 466, 210 HP 81,000 miles
34,000 GVW! Air Brakes, 2 spd. rear,
18' Steel Dump
Value \$14,900
(717) 656-2366

PRE-OWNED TRUCKS

'94 K2500 S/CAB
4x4, DRW, Turbo Diesel, A/C & More
'93 RANGER S/CAB
4x4, STX, 4.0L, 5 Speed, A/C
'88 RANGER W/CAB
4x4, XLT, V-8, A/O, A/C
'91 F150 4x4
4.9L, A/O, A/C, XLT, 1 Owner
'92 F150
XLT, V-8, A/O, A/C, 17,000 Miles
'93 FORD E350 CUBE VAN
V-8, A/O, A/C
'93 F250 SUPER CAB
V-8, A/O, A/C, Heavy Duty

PRE-OWNED CARS

'93 MERCURY COUGAR
XR7, V-6, A/O, A/C, Low Mileage
'90 MUSTANG LX HATCHBACK
2.3L, 5 Speed, A/C, 35,000 Miles
'92 CROWN VICTORIA LX SEDAN
Power Equipment Group, 1-Owner
'93 T-BIRD LX COUPE
V-8, A/O, A/C, 1 Owner
'94 SABLE GS SEDAN
Low Miles, Several to Choose
'90 BERETTA
V-6, A/C, A/O, Carriage Roof, 1 Owner
'89 TAURUS GL SCD
Power Equipment, 45,000 Miles

PRE-OWNED MPV'S

'89 GEO TRACKER CONVERTIBLE
5 Speed, 1 Owner, 10,000 Miles
'89 AEROSTAR EXTENDED LENGTH
Dual A/C, A/O, 1 Owner
'93 EXPLORER SPORT
4.0L, A/O, A/C, 1 Owner, 31,000 miles
'91 CHEROKEE SPORT
4.0L, 6 Cyl., A/O, A/C, Priced to Sell
'92 WRANGLER SPORT
6 Cyl, 5 Speed, Soft top, 27,000 Miles
'93 WRANGLER SAHARA
A/C, 6 Cyl, Hard Top, 33,000 Miles
'92 BRONCO
351 V-8, A/O, A/C, Nice Edition, 1 Owner

ENGLE-RISSINGER
AUTO GROUP
Rt. 147 Just North of Halifax
Halifax, PA 17032
The Call's On Us 1-800-242-8075
1-717-896-3121