

S & J Villari Livestock Feeder Pig Sale

Millsboro, Del.
July 24, 1995
Report Supplied by Auction
589 HEAD
20-29 LBS. 50.00; 30-39 LBS. 68.00-75.00; 40-49 LBS. 69.00-75.00; 50-59 LBS. 60.00-69.00; 60-69 LBS. 54.00-60.00; 70-79 LBS. NO QUOTE; 80-89 LBS. 40.00-45.00.

Middleburg Hog Report

Middleburg, Pa.
Monday, July 24, 1995
Report supplied by Auction
187 HEAD, TREND 1.50 LOWER.
US#1-2 230-260 LBS. 46.00-48.00.
US#1-3 220-260 LBS. 45.00-47.00;
175-205 LBS. 35.00-41.00.
US#2-3 215-265 LBS. 40.50-45.00.
SOWS: TREND 1.50 LOWER. US#1-3
500-675 LBS. 28.00-28.75, 420-500 LBS.
27 00-28.50; #2&3 350-485 LBS.
23 00-26.00.
BOARS: 260-604 LBS. 21.00-23.00.

Lancaster Hogs

Lancaster Stockyards
Saturday, July 22, 1995
Report supplied by auction

There will no longer be a sale auction on Saturday. Sales will be held Monday and Wednesday.

Indiana Hogs

SPRINGFIELD, IL
JULY 27, 1995
Barrows and Gilts Unevenly Steady Demand moderate. US 1-3 230-260 lbs. 45.00-47.00 Few 47.25. US 2-3 230-260 lbs. 40.00-45.00 210-230 lbs. 36.00-40.00
Sows: Mostly Steady. US 1-3 300-500 lbs. 25.00-28.50 Few 24.50 500-650 lbs. 28.50-30.50 Few over 650 lbs. 31 00
Boars: 25.00-28.00

New Holland Hogs

LANCASTER, PA
JULY 24, 1995
TREND: Compared to last Monday barrows and gilts 1.00 lower. US 1-2 215-260 lbs 47.00-48.00 US 1 215-235 lbs 48.00-48.50 US 1-3 220-260 lbs 46.00-47.00

New Holland Feeder Pigs

New Holland, PA
Wed., July 26, 1995
Report Supplied by USDA
TODAY: 1172 HEAD
LAST WEDNESDAY: 555 HEAD
LAST YEAR: 1144 HEAD
TREND: COMPARED TO LAST WEDNESDAY, FEEDER PIGS 5.00-15.00 HIGHER. ALL PIGS WEIGHED ON ARRIVAL AND SOLD BY THE HUNDRED WEIGHT.
GRADE 1-2: 81 HEAD 36-39 LBS. 68.00-74.00, WEIGHTED AVERAGE 38.04, WEIGHTED PRICE 70.20; 219 HEAD 40-49 LBS. 61.00-71.00, WEIGHTED AVERAGE 45.57, WEIGHTED PRICE 64.81; 173 HEAD 50-59 LBS. 54.00-62.00, WEIGHTED AVERAGE 53.94, WEIGHTED PRICE 58.28.
US#2: 111 HEAD 32-38 LBS. 50.00-66.00, WEIGHTED AVERAGE 35.18, WEIGHTED PRICE 56.81; 111 HEAD 42-48 LBS. 54.00-66.00, WEIGHTED AVERAGE 44.20, WEIGHTED PRICE 57.25; 117 HEAD 53-59 LBS. 46.00-52.00, WEIGHTED AVERAGE 56.86, WEIGHTED PRICE 50.01; 24 HEAD 62-69 LBS. 50.00-59.00, WEIGHTED AVERAGE 67.38, WEIGHTED PRICE 55.76; 30 HEAD 70 LBS. 51.00, WEIGHTED AVERAGE 70.00, WEIGHTED PRICE 51.00.
US#2-3: 36 HEAD 34-35 LBS. 43.00-52.00, WEIGHTED AVERAGE 34.69, WEIGHTED PRICE 48.09; 30 HEAD 42-48 LBS. 37.00-42.00, WEIGHTED AVERAGE 43.40, WEIGHTED PRICE 38.29.
SLAUGHTER: 62 HEAD 19-28 LBS. 60.00-74.00, WEIGHTED AVERAGE 24.77, WEIGHTED PRICE 67.16.

New Holland Horses

New Holland Sales Stables
New Holland, PA
Monday, July 24, 1995
Report Supplied By Auction
216 HEAD. MARKET STRONGER.
WORK HORSES 885.00-1050.00.
DRIVING HORSES 525.00-1100.00.
RIDING HORSES 465.00-975.00.
BETTER RIDING HORSES 1075.00-1750.00.
REGISTERED RIDING 710.00-1900.00.
KILLERS, HEAVYWEIGHTS 700.00-840.00, 1 AT 900.00; LIGHT-WEIGHTS 350.00-640.00.
PONIES 160.00-385.00.
LARGE PONIES 460.00-575.00, 1 AT 650.00.
COLTS 140.00-410.00.

Kirkwood Hay Auction

Kirkwood, Pa.
Tuesday, July 25, 1995
Report Supplied by Auction
26 LOADS OF HAY.
MIXED: 1ST CUTTING 80.00-102.00, 2ND CUTTING 80.00-138.00.
TIMOTHY: 61.00-71.00.
ALFALFA: 1ST CUTTING 64.00, 2ND CUTTING 30.00-120.00.
CLOVER: 72.00.
GRASS: 81.00-83.00.
WHEAT STRAW: 60.00-92.00.
OATS: 2.00 BU.
SALE TIME 11 A.M.

North Jersey Market

Hackettstown, N.J.
Report Supplied by Auction
Tuesday, July 25, 1995
Hay—Straw & Grain Report
ALFALFA: 1 BALE AT 2.10.
MIXED HAY: 7 LOTS, 1.10-2.50 BALE.
TIMOTHY: 13 LOTS, 1.00-2.70 BALE.
GRASS: 4 LOTS, 1.50-3.80 BALE.
BARLEY STRAW: 7 LOTS, .80-1.60.
OATS STRAW: 1 LOT SPLIT AT 1.60-AND 1.90.
TOTAL: 33 LOTS.

Leinbach's Hay

Shippensburg, PA
July 22 and 25
Report Supplied by Auction
46 LOADS.
ALFALFA: 46.00-90.00.
MIXED HAY: 47.00-90.00.
TIMOTHY: 100.00.
CLOVER: 62.00.
BROME GRASS: 60.00-100.00.
ORCHARD GRASS: 50.00-65.00.
STRAW: 45.00-65.00.
EAR CORN: 85.00-93.00.
MULCH HAY: 10.00-37.00.

Westminster Hay

Westminster, Md.
Tuesday, July 25, 1995
Report Supplied by Auction
66 LOTS.
ALFALFA: .50-3.80 BALE, 19.00
LARGE ROUND.
TIMOTHY: .50-2.20 BALE.
MIXED HAY: .40-3.00 BALE.
STRAW: .70-1.60 BALE.
FEED OATS: 2.10 BALE.
GRASS: .25-1.65 BALE.
MULCH: .20 BALE.

Diffenbach Auction Center

New Holland, Pa.
Monday, July 24, 1995
Report Supplied by Auction
TOTAL LOADS: 81.
ALFALFA: 60.00-160.00.
MIXED HAY: 55.00-180.00.
TIMOTHY: 55.00-160.00.
HAYLAGE: 50.00.
ORCHARD GRASS: 72.00.
STRAW: 60.00-90.00.
EAR CORN: 90.00-104.00.
OATS: 1.90-2.20.

Green Dragon Hay

Ephrata, Pa.
Friday, July 21, 1995
Report Supplied by Auction
51 TOTAL LOADS.
MIXED HAY: 8 LOADS, 30.00-220.00.
ALFALFA: 4 LOADS, 78.00-127.00.
TIMOTHY: 4 LOADS, 76.00-110.00.
STRAW: 25 LOADS, 30.00-81.00.
EAR CORN: 7 LOADS, 93.00-109.00.
ORCHARD GRASS: 1 LOAD AT 68.00.
HAYLAGE: 45.00.

Dewart Hay

Dewart, Pa.
Monday, July 24, 1995
Report Supplied by Auction
4 LOADS OF HAY, 53.00-65.00.
STRAW: 4 LOADS, 50.00-55.00.
CORN: 83.00.
OATS: 1.75 BU.

Good's Hay

Leola, Pa.
Wed., July 26, 1995
Report Supplied by Auction
TOTAL LOADS: 50.
CORN: 92.00-101.00.
STRAW: 45.00-67.00.
MIXED HAY: 60.00-130.00.
ALFALFA: 50.00-70.00.
TIMOTHY: 62.00-120.00.
GRASS: 82.00-105.00.

Middleburg Hay

Middleburg, PA
Tues., July 25, 1995
Report supplied by auction
ALFALFA: 60.00-90.00.
MIXED HAY: 52.00-81.00.
TIMOTHY: 90.00.
STRAW: 10 LOADS, 47.50-75.00.
EAR CORN: 12 LOADS, 76.00-86.00.
SHELLED CORN: 3.35 BU.
OATS: 1.55-1.60 BU.

Regional Hay

July 24, 1995
Eastern, Pa.
HAY & STRAW MARKET FOR EASTERN PA - (ALL HAY NO. 2 AND BETTER. PRICES PAID BY DEALERS AT THE FARM & PER TON.) HAY STEADY TO STRONG, STRAW STEADY TO WEAK.
ALFALFA 60.00-100.00; MIXED HAY 50.00-90.00; TIMOTHY 50.00-90.00; STRAW 50.00-75.00; MULCH 25.00-45.00.
SUMMARY OF LANCASTER CO. HAY AUCTIONS FOR WEEK ENDING 7/21/95. PRICES PER TON: LOADS: 108 HAY, 75 STRAW & 21 EAR CORN.
ALFALFA 77.00-130.00; MIXED HAY 55.00-122.00; TIMOTHY 50.00-110.00; STRAW 57.00-82.00; EAR CORN 90.00-102.00.
SUMMARY OF CENTRAL PA. HAY AUCTIONS FOR WEEK ENDING 7/21/95. PRICES PER TON: LOADS: 66 HAY, 8 STRAW & 20 EAR CORN.
ALFALFA 50.00-90.00; MIXED HAY 40.00-90.00; TIMOTHY 47.50-71.00; STRAW 60.00-76.00; EAR CORN 72.00-94.00.

Belleville Hay

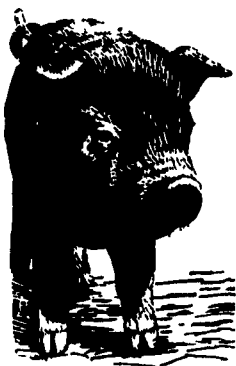
Wednesday, July 26
Belleville, PA
Report Supplied by Auction
ALFALFA: 50.00-95.00.
MIXED HAY: 50.00-90.00.
STRAW: 45.00-60.00.

Vintage Hay

Paradise, PA
Thurs., July 27, 1995
Report Supplied by Auction
ALFALFA: 97.00.
TIMOTHY: 77.50.
GRASS: 87.50-90.00.
STRAW: 60.00-82.50.
TOTAL: 8 LOADS.
SALE TIME 1 P.M.

Kutztown Produce Auction

Report Supplied by Auction
Saturday, July 22, 1995
TOTAL LOADS: 8.
ALFALFA: 65.00.
MIXED HAY: 82.50-85.00.
TIMOTHY: 64.00-94.00.
WHEAT STRAW: 70.00-73.00.



Carlisle Livestock Market, Inc.
FED CATTLE SALE
2nd Tuesday of every month
Tues., Aug. 8 @ 7 PM
Exit 12 off I-81 Turn South
Early Bird Pens
Close 2 P.M.
Market (717) 249-4511
Jim (717) 249-2359

KIRKWOOD HAY AUCTION
Hay, Straw and Grain Auction
EVERY TUESDAY 11:00
Located Rt. 472 5 miles south of Quarryville or 6 miles north of Oxford corner of Rt. 472 and Noble Road.
Lloyd H Kreider, Auctioneer
AU-000513L
No out of state checks

PENNFIELD GRAIN BANK
Pennfield Offers A Sound Program For The Dairy Farmer To Use His Grain "Same As Cash" To Reduce His Monthly Feed Bill And To Avoid Having To Take "Harvest Price" For His Grain
Prices Week Of 7/31/95
Corn \$3.45 Bu.
Soybeans \$6.20 Bu.
Barley \$1.87 Bu.
• No Storage Charges
• Prices Updated Weekly
• Grain Bank Balance Shown On Each Invoice
• No Hidden Charges
For every ton of qualifying dairy feed purchased you will receive one ton of grain back hauled at no charge
Call 1-800-712-0167
pennfield feeds

INDEX
Lancaster Farming
Five Sections

COLUMNS
Now is the Time..... A10
On Being A Farm Wife..... B 3
Family Living Focus..... B 5
Consuming Thoughts..... B12
Ida's Notebook..... B16

DEPARTMENTS
Editorial..... A10
Farm Calendar..... A10
Futures..... A16
Mailbox Markets..... B18
Sale Reports..... B22
Public Auction Register..... B23
Business News..... A30
Classified Ads..... C 3, D 2
Fair Happenings..... D 5

HOME AND YOUTH
Homestead Notes..... B 2
Home On The Range..... B 6
Cook's Question Corner..... B 8
Kid's Korner..... B10
You Ask, You Answer..... B14
4-H Happenings..... B17
Farm Women Society..... B17

DAIRY
DHIA Focus..... A20
York Holstein Picnic..... A33
Pa. Highest Protein..... B17
Dairy of Distinction Section

FEATURES
Somerset Holstein Show..... A22
Md. Holstein Show..... A22
4-H Achievement Days..... A23
Vanishing Acres..... A24
4-H Dairy Show..... A28
Kimberton Dairy Show..... A29
Dauphin Holstein Field Day..... A32
Flying Farmers..... B 2
Newville Chefs..... B 7
Perry Co. Dairy Princess..... B12
Laura Watts..... B15

Walter M. Dunlap and Sons offers all cattle feeders two marketing days. Give us a call for advice and marketing conditions.
MONDAYS OR WEDNESDAYS
Consign With Us - For The Marketing Edge
Next Feeder Cattle Sale
Wednesday, August 2 - 12 Noon
Walter M. Dunlap and Sons
Lancaster Stockyards
Tel. (717) 397-5136
An Old Line Commission Firm Keeping Abreast With The Times