

ROLLING ON...IN THE 90'S



MEETS THE CHALLENGE

CONGRATULATION AWARDS WINNERS!



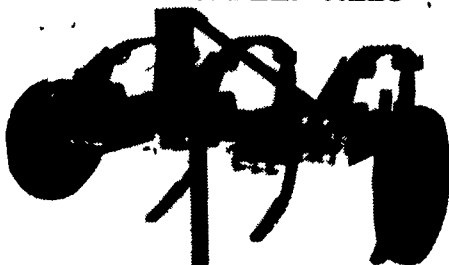
# THE QUALITY CRAFTED LINE BETTER SEEDBEDS... BETTER STANDS!

## SOIL BUILDERS



**SOIL BUILDERS.** Optional Coulter gang can be hydraulically controlled to save maintenance dollars. 5, 7, 9, 11 & 13 shanks. Available in 2 & 3 bar.

## 3-SHANK DEEP TILLS



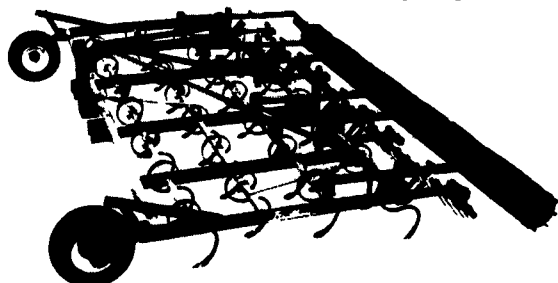
The three shank model, shown above, has a Category II hitch. With a cutting width of 7'6", it is ideal for operators with smaller acreages and horsepower. It is extremely maneuverable, yet provides the same basic deep tilling job as its "big brothers" Available with coulters.

## COMPACTION COMMANDERS NO-TILL RIPPER/DEEP RIPPER DESIGNED FOR YOUR CONSERVATION NEEDS 3-5-7 Shank



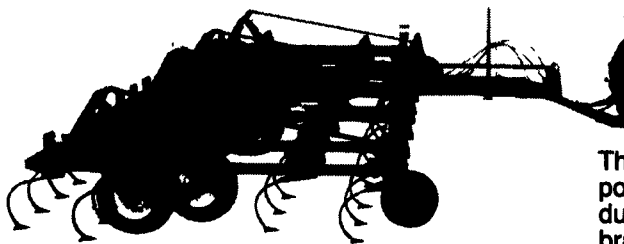
Brillion introduces their new Compaction Commander...designed to break up hardpan and compaction as deep as 20". CCD 500 The standard V-shaped alloy point and wear strip leaves residue on the surface with minimal soil disturbance. Auto-rest shanks with 20" of trip height allows for non-stop tillage. Parabolic shanks lift and fracture the soil. 39" of underframe clearance assures trouble free operation even in heavy residue.

## 3 PT. BASKET HARROWS



Brillion has designed a 3 pt. S-Tine field cultivator with a larger, aggressively angled 12" diameter rolling basket, a 4-bar frame that allows for either 4" or 6" tooth spacing and an adjustable leveler bar in 12', 15' and 18' sizes. Gauge wheels are optional.

## HFC FIELD CULTIVATORS 16 1/2' to 31 1/2'

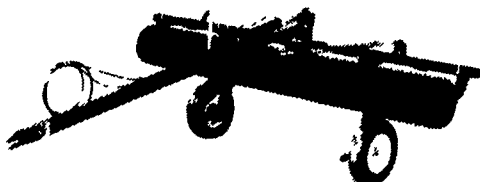


'C' Tooth -  
4 Year Warranty

S-Tine -  
3 Yr. Warranty

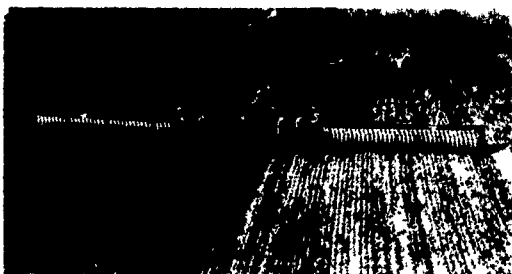
The "heart" of any field cultivator is the shank pivot point. A "bulked up" shank bracket made of cast ductile iron instead of the usual formed steel bracket, incorporated a hardened steel bushing AND a zerk grease fitting to lubricate the pivot point to reduce wear. The result is thousands of acres of extended life of the shanks.

## P-SERIES TRANSPORT PULVERIZERS 10 Ft. to 18 Ft.



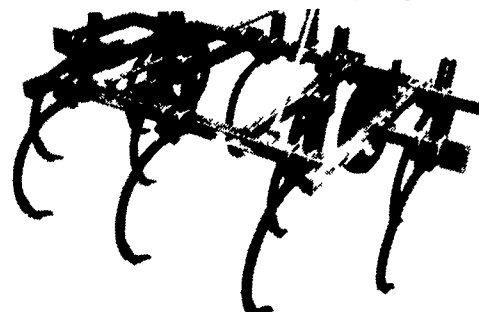
**Rotary Frame Pulverizers; New PT10 Series Transport Concept.** Machine weight is hydraulically rotated over the wheels for transport. This reduces draw bar hitch weight considerably and provides ample clearance for transport. Also Available As Pull Type.

## X-FOLD PULVERIZERS



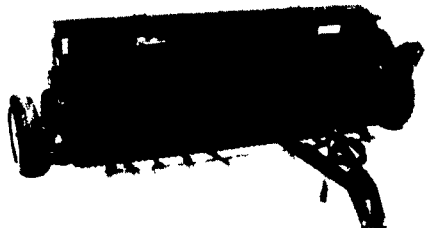
The X-Fold pulverizers are designed to meet the needs of today's larger acreage farmers...and Brillion offers them in two models and 11 sizes from 19' through 46'. Now available with 20" Ductile Wheels.

## 3 BAR CHISEL PLOWS



The CPP series mounted models enables you to turn short and fast... to transport easily, utilizing your tractor's hydraulic system, 7, 9, 11, 13 or 10,12,14,16 shank.

## AG SURE STAND SEEDERS



### SS8, SS10 & SS12 SEEDERS

For years Brillion Grass Seeders have proven to be the best machine for planting grasses and legumes... and now they're even better! Larger, heavier boxes, high seeding rates, nylon lined seed meter, heavier frame, new drive system and more. 5 ft., 8 ft., 10 ft., Available in 3-point or pull type.

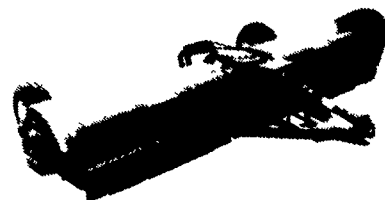
## ML SERIES PULVI-MULCHERS 12'6", 13'10", 15'2", 18'9"

- SERIES 03 - Built to last.**
- Easy rolling 20" ductile iron notched or crowfoot roller wheels with a 5 year limited warranty.
  - Longer life external mounted bearings.
  - Longer, heavier drawbar for shorter turns.



There's lots more reasons to buy Brillion... stop in and we'll talk.

## FLAIL SHREDDERS 12 Ft. And 15 Ft.



**FLAIL SHREDDERS** Heaviest gearbox on the market eliminates the number one cause of downtime. Available in 12' and 15'. Either cup or side slicer knives. 540 or 1000 RPM.

FOR MORE INFORMATION... CONTACT YOUR BRILLION DEALER

### PENNSYLVANIA

- ADAMSTOWN  
Adamstown Equip. Inc.
- ALLENTOWN  
Lehigh Ag Equipment
- BECHTELSVILLE  
Miller Equip. Co.
- BERWICK  
C.H. Rinehimer & Sons
- CARLISLE  
Gutshall's, Inc.

- DOVER  
George N. Gross, Inc.
- EASTON  
George V. Selple
- ELIZABETHTOWN  
Messick Farm Equipment Co.
- INTERCOURSE  
C.B. Hooper & Son
- GREENCASTLE  
Meyers Implement
- LANCASTER  
Landle Brothers, Inc.
- LEBANON  
Umberger's of Fontana

- LOYSVILLE  
Gutshall's, Inc.
- LYNNPORT  
Kermit K. Kistler, Inc.
- NEEDMORE  
Clugston Farm Equipment
- NEW HOLLAND  
A.B.C. Groff, Inc.
- OAKLAND MILLS  
Peoples Sales & Service
- OLEY  
Pikeville Equipment, Inc.

- QUARRYVILLE  
Grumell Farm Service
- TAMAQUA  
Charles Snyder, Inc.
- WATSONTOWN  
Deerfield Ag & Turf Center, Inc.
- WEST GROVE  
S.G. Lewis & Son, Inc.
- MARYLAND**
- FREDERICK  
Ceresville Ford New Holland

### NEW JERSEY

- BRIDGETON  
Leslie Fogg
- ELMER  
Pole Tavern Equip. Sales Corp
- COLUMBUS  
Reed Brothers Equipment
- FAIRFIELD  
Caldwell Tractor & Equipment
- ROLLING ON...IN THE 90'S
- MEETS THE CHALLENGE