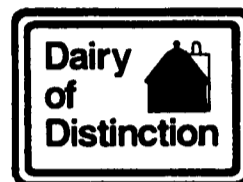
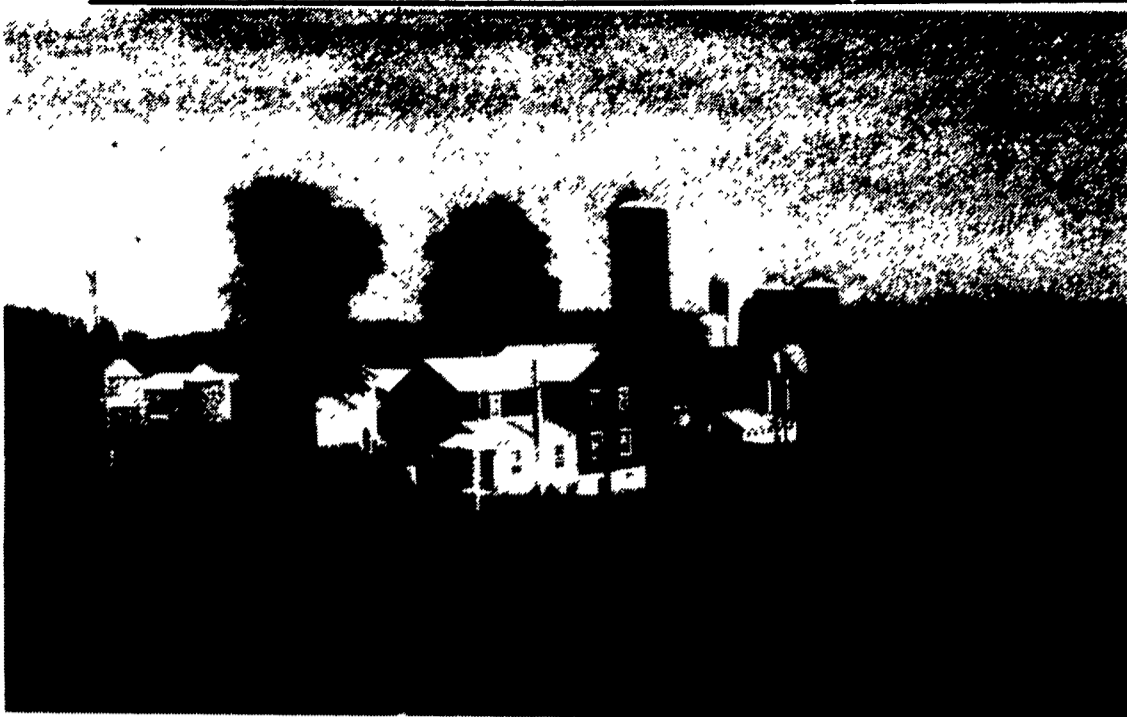


Fry Farm

Leire and Cathrine Fry, along with sons Leire C., Gary, and Paul, have one of the new Dairy of Distinction farms in Snyder County. Located near New Berlin, the Frys farm 900 acres of corn, alfalfa, oats, and wheat. Their 130 Holstein milk cows average over 20,000 pounds of milk with a number of cows milking over 100 pounds a day. They milk in a parlor and have a computer feeder. The farm has been in the family for 70 years. Leire C. and his wife Kate have Cathy, 13. Gary and his wife Lorene have four children, Gary Jr., 15; Kevin, 13; Kayle, 9, and Britney, 5. Paul and his wife Lori have the newest member of the family, Auston, who arrived in April of this year.

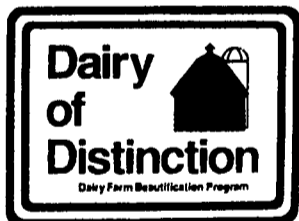


Normandell Farm

Ernest and David Norman are partner owners of Normandell Farm, located west of Liberty in Tioga County. The Normans are noted for their excellent Jersey herd ranking 7th in the nation for genetics. They have five excellent cows and their top individual record is over 24,000 pounds of milk. They milk 60 cows with an average of 15,200m 717f 570p. They have a tie-stall barn use a TMR feeding program. The farm has been in the family since 1904. Ernest and his wife Dorothy have five children, Susan Pifer; Steven; Carolyn Moyer; Cathleen, and Ellen. Norman and his wife Aggie have three children: Mark; Emely, and Renee. David is the Pennsylvania Jersey Association's secretary.

H & S BI-FOLD WHEEL RAKE

FOUR MODELS TO CHOOSE FROM— A SIZE FOR EVERY OPERATION



**Congratulations
To All The Dairy Of
Distinction Award Winners!**



The H&S 12 WHEEL HYDRAULIC OPENING IS PICTURED.

GAUGE WHEELS AND JACK ARE STANDARD EQUIPMENT. RAKE WHEELS ARE INDIVIDUALLY MOUNTED TO ALLOW THEM TO FOLLOW THE CONTOURS IN THE GROUND. PROVIDES SMOOTH CLEAN RAKING. OPTIONAL CENTER KICKER WHEEL AVAILABLE—USED WHEN RAKING 3 ROWS TOGETHER.

SPECIFICATIONS

OVERALL DIAMETER OF FINGER WHEELS 55"
 NUMBER OF TEETH PER WHEEL 40
 7MM DIAMETER IN THE RAKE TEETH
 RAKE WHEELS—HUBS WITH TAPERED ROLLER BEARINGS AND DUST COVERS
 TIRE SIZE 15"

MODEL	ADJUSTABLE RAKING WIDTHS	TRANSPORT WIDTH
8 WHEEL MANUAL	12'6" - 17'2"	9'6"
12 WHEEL MANUAL	19' - 24'	9'8"
12 WHEEL HYDRAULIC	18'-24'	9'8"
16 WHEEL HYDRAULIC	24'6" - 31'6"	9'10"



EASY TO TRANSPORT

ADDISON FARM & INDUSTRIAL
Addison, PA

ECKROTH BROS. FARM EQUIP.
New Ringgold, PA

HARTS FARM EQUIP.
Cochranston, PA

LOST CREEK IMP.
Oaklands Mills, PA

NORTHEAST DISTRIBUTORS
West Clifford, PA

BANGOR IMPLEMENT
Bangor, PA

FINCH IMP.
Hanover, PA

HESS FARM EQUIP.
Canton, PA

MCDOWELL FARM & IMP.
Grove City, PA

SMITH IMP. INC.
Mercersburg, PA

BARTOSEK AGRI S&S
West Springfield, PA

FLINNER EQUIP.
Prospect, PA

HETRICK FARM SUPPLY
New Bethlehem, PA

NEW ALEXANDRIA FARM SUPPLY
New Alexandria, PA

SOMERSET BARN SUPPLY
Somerset, PA

JOHN BROWN EQUIP.
Perryopolis, PA

GALLUP & TENHAKEN
Clymer, NY

HOOVER EQPT.
Tyrone, PA

NORMAN D. CLARK
Honey Grove, PA

SWEIGER EQUIPMENT
Avella, PA

D&E EQUIPMENT
Bloomsburg, PA

For More Information, Contact Your Local Dealer Or

H & S Manufacturing, Co.

Ripley, NY (716) 736-7595



DOTTERER EQUIP.
Mill Hall, PA

TRIPLE H TRACTOR
Peach Bottom, PA

WATSON INC.
Sharon, PA

ROBERT WILKINS
Saxton, PA