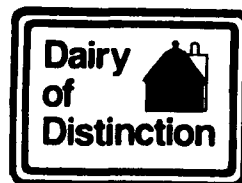
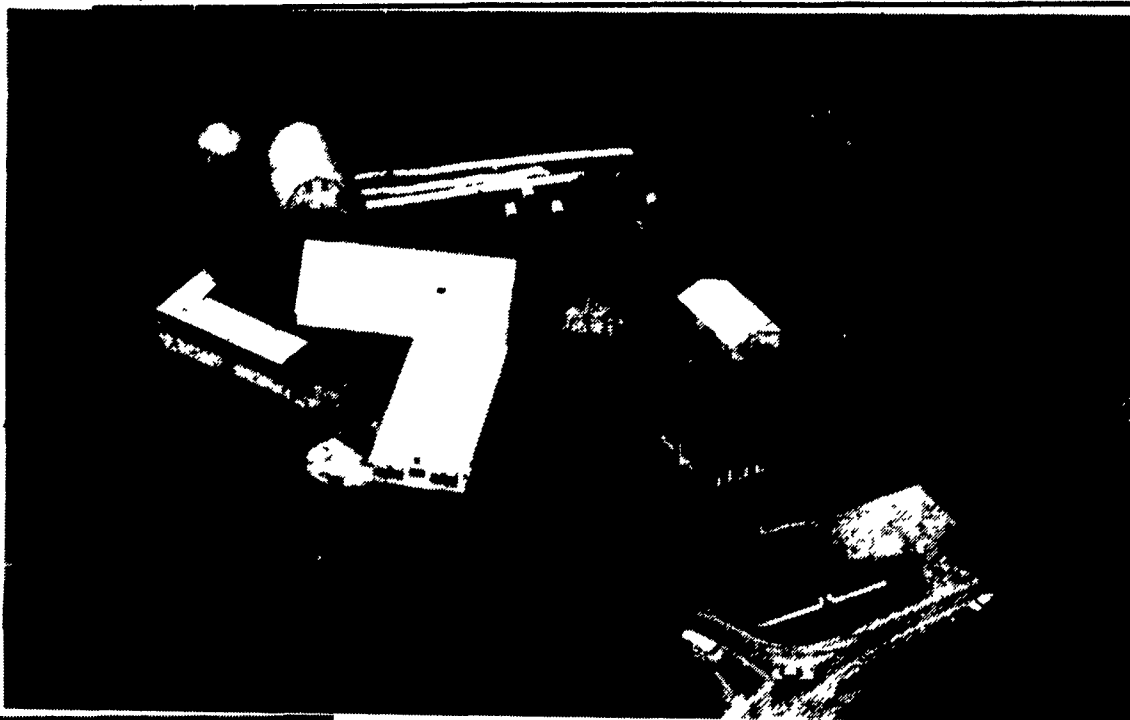




### Katlin Farm

Marlin and Kathy Horst operate Katlin Farm in Lititz, Lancaster County. Marlin said the farm purchases all its feed for 50 milking (52 young stock) of registered Holsteins. Latest DHIA rolling herd average is 22,319 pounds milk, 796f, and 721p. Marlin said they milk from tiestall to pipeline and administer a TMR from a feed company. Marlin farms with wife Kathy and Lynell, 2 years and Keith, 10 months. Marlin believes the advantages of having a good nutritionist and good feed company contribute to a successful dairy operation.

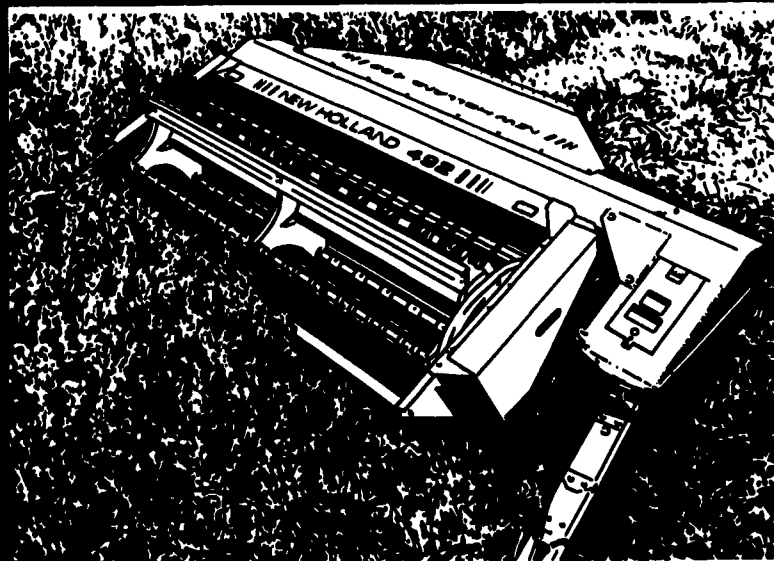


### Sixcorner Farm

"We work with good people," said David Stoltzfoos of Sixcorner Farm in Leola, Lancaster County. David commented about the successful relationship the farm family has with nutritionists and industry representatives to make the Dairy of Distinction profitable. David, who farms with wife Gina, son Jordan, 1 month old, and father Wilmer, manages about 70 acres (60 tillable) and cares for 40 (45 young stock) of registered Holsteins. The latest DHIA rolling herd average is 20,500 pounds milk, 798f, and 658p. The cows are milked from tiestall to pipeline. A TMR is administered from a feed company. One farm building dates back to 1830, and this is the 6th generation of the family to operate the farm.

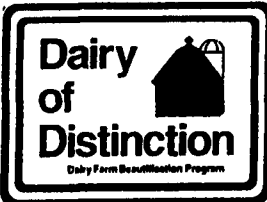
## Congratulations to all Dairy of Distinction Winners

### LIGHTWEIGHT HEADER



### CLOSE, EVEN CUTTING

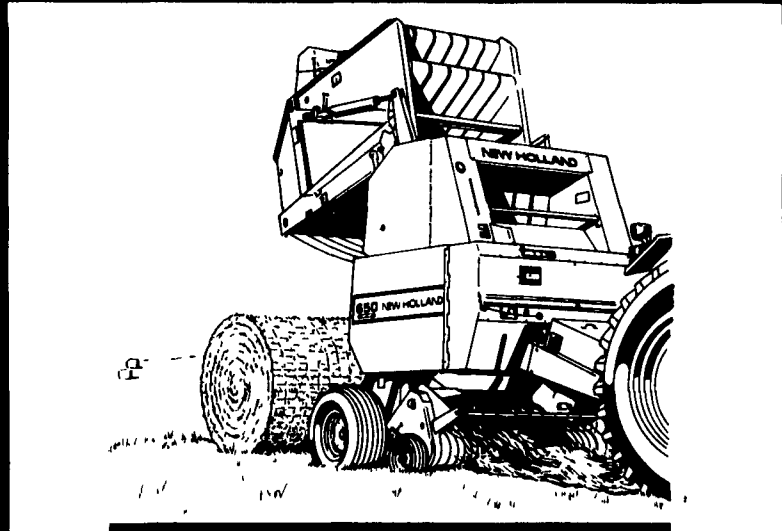
The Model 492 Haybine® is the ultimate nine-foot mower-conditioner. Its unique lightweight header floats over ground contours for a close, even cut and less cutterbar damage. Get *all* your crop. Stop by and take a look at the Model 492!



Our factory trained technicians can service your New Holland or any other make or model farm equipment

**Big savings on Used Farm Equipment Call Today!**

### HIGH-CAPACITY BALING



### PICTURE PERFECT BALES

Put more capacity in your haying operation with the Model 650 Roll-Belt™ round baler. Standard features like the exclusive hydraulic density system give you tight bales every time. And, optional features like the wide pickup and the Fastnet™ net wrapping option give you even more speed and capacity. Come in for a demonstration!



NEW HOLLAND

**BAM FARM EQUIPMENT**  
 SALES - PARTS - SERVICE  
 Route 934 - 2 Miles North of Annville, PA 717-867-2211