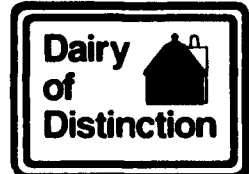
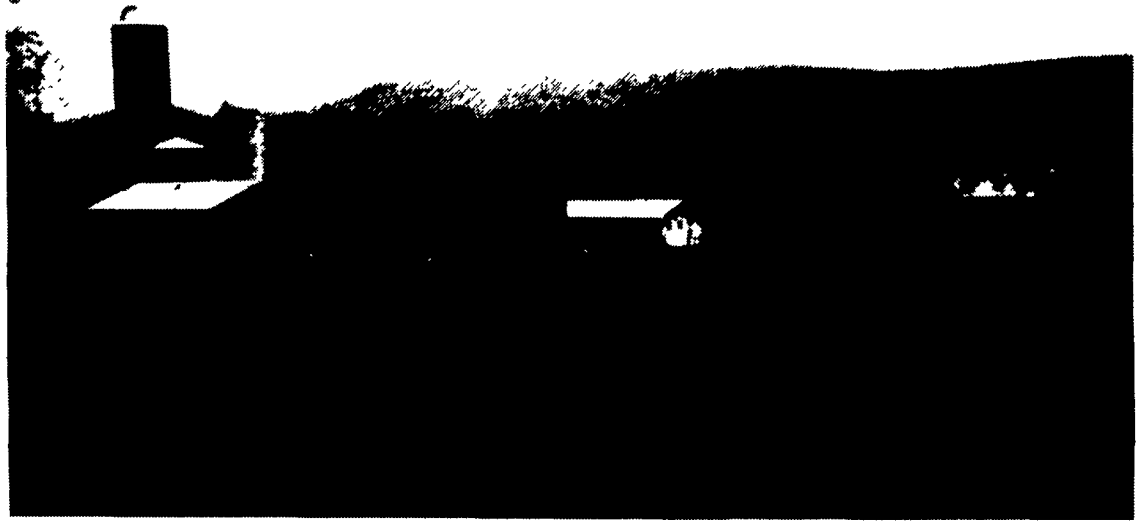


### Rice Farm

This Dairy of Distinction owned by Dick and Eleanor Rice is located west of New Enterprise in Bedford County. Dwayne Musselman is in partnership with the dairy operation. They farm 150 acres of corn and alfalfa and milk 70 Holstein and Holstein Jersey crossbred cows. Herd average is 20,800 pounds of milk. The Holstein Jersey cross has been working well with the cows from this breeding showing a little more protein. And calving problems with helpers are reduced to a minimum. Both TMR feeding and rotational grazing are used. Dwayne said that to be successful, you need to watch your money and how you spend it, and try to keep good cows that don't require much extra expense.



### Kurtland Farm

"My husband is very skilled in management," said Deborah Kurtz, who farms with Tim, son Jared, 7 and three daughters, Hannah, 5, Kaitlyn, 3, and Lauren, 1 at Kurtland Farm in Elverston, Berks County. Deborah said the family farms about 200 acres and cares for registered and grade Holstein, including 90 milking and 90 young stock. DHIA rolling herd average is 22,200 pounds milk, from tie-stall to pipeline. A TMR is administered from a feed company. Kurtland Farm, in the family for 75 years, has been operated by Tim and Deborah for 10 years. In addition, one full-time herdsman, James Gridley, is employed, along with several part-time employees. They also sell about three acres of sweet corn. Deborah credits the time off provided by relief milking that allows Tom to return to work "refreshed" as vital to the operation.



## POWDER COATED STEEL DAIRY BARN EQUIPMENT

### LOOP STALLS

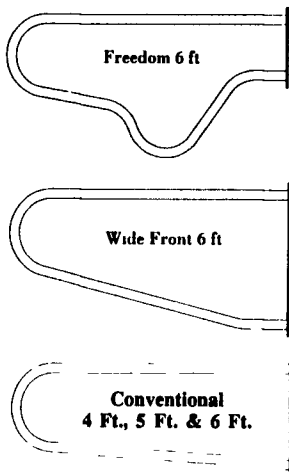
All Loop Stalls Are Coated With Baked-On Top Grade Polyester TGIC Powder Coating After Fabrication

- Super Tough Finish
- Protection From Rust & Corrosion
- Resists Acid & Chemicals
- Chip Resistant
- Superior Electrical Insulation
- Smoother Finish Stays

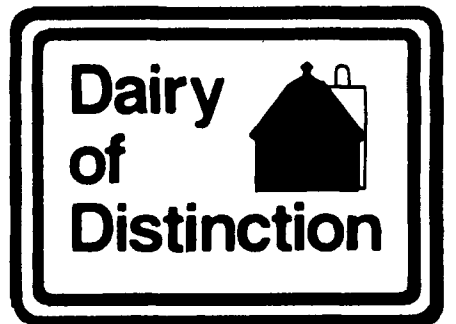


Loop Stalls Are Constructed Of:

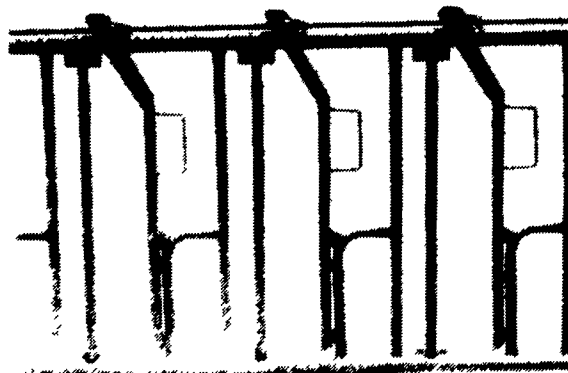
- 2 3/8" Outside Diameter High Yield Steel Tubing With A 12 Ga. (.108) Wall
- Spray Arc Transfer Method Used On Welds



**Congratulates  
The 1995  
Award Winner**



### HEADLOCKS EXTRA HEAVY CONSTRUCTION



**Three  
Sizes  
Available  
To Meet  
All Your  
Cattle  
Handling  
Needs**

### SUSPENDED COMFORT STALLS

For Modern Tie Banks

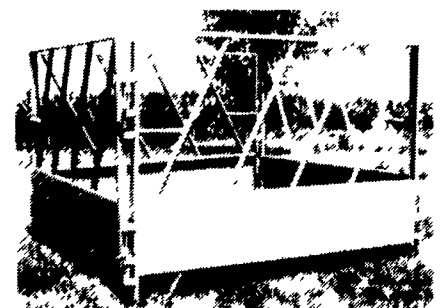


- Coated with baked on TGIC Polyester Powder
- All welded construction to give many years of trouble free service
- Stall constructed with 1.9 O.C., .133 wall, high strength tube and 2" square tube post with 1/4" wall

**All Gates & Fencing Made Of 1.9" Outside Diameter High Yield Steel Tubing With 13 Ga. Wall**

### HAY BALE FEEDERS

- Feed big round & red, baled or stacks
- 1/8" formed steel channel and 1" sch. 40 pipe, all welded construction
- 14 ga. sheet metal around bottom helps reduce hay loss



Hours Mon. Thru Fri. 7 to 5  
717-738-7365

295 Woodcorner Rd., Lititz, PA 17543-9165  
1 Mile West of Ephrata