

Phila Fruit Market

PHILADELPHIA
JULY 26, 1995

CITRUS FRUITS

---GRAPEFRUIT: MARKET STEADY
cns CA Red 23s 12.50 27s fr qual 11.50
32s fr qual 11.00-11.50 mostly 11.50 36s fr
qual 10.50-11.00 40s fr qual 10.50-11.50
48s fr qual 10.50-11.50 Star Ruby 23s fr
qual 13.00 27s fr qual 13.00 32s fr qual
13.00 40s fr qual 13.00

---LEMONS: MARKET STEADY cns
CA 95s fr qual 24.00-25.50 115s 30.00 fr
qual 24.50-25.50 ord qual 19.00-21.00
140s 31.00 fr qual 25.00-26.00 ord qual
19.00-20.00 165s 32.00 fr qual
25.00-27.00 ord qual 18.50-20.00 200s fr
qual 26.00 235s fr qual 18.50 CL BOAT
110s 20.00

---LIMES: MARKET ABOUT
STEADY 10 lb cns FL Seedless Type 48s
4.00-5.00 54s 3.75-4.50 few 5.00 63s 3.50
MX Seedless Type 54s 3.50 few 4.00-4.25

---MISC CITRUS: OFFERINGS
INSUFFICIENT TO QUOTE

---ORANGES: MARKET ABOUT
STEADY cns CA Valencia 56s 18.00 fr
qual 14.00-15.00 72s fr qual 13.50-15.00
88s 15.00-16.00 fr qual 13.00-14.00 mos
13.50 113s 12.00 fr qual 12.00-13.00 mos
12.50 138s 10.00 fr qual 10.50-11.00

---TANGELOS: OFFERINGS NONE
---TANGERINES: OFFERINGS
NONE

---TEMPLES: OFFERINGS NONE

---BERRIES

---BLUEBERRIES: MARKET LOW-
ER fits 12 1-pt cups with lids NJ med-lge
8.00-9.00 mostly 9.00 occ 10.00

---CRANBERRIES: OFFERINGS
NONE

---MISC BERRIES: OFFERINGS
LIGHT fits 12 6-oz cups with lids CA
Blackberries 18.00

---RASPBERRIES: fits 12 6-oz cups
with lids CA Red 18.00

---STRAWBERRIES: OFFERINGS
LIGHT fits 12 1-pt bkts CA med-lge
10.00-12.00 mostly 11.00 one label
15.00-17.00

---MELONS

---CANTALOUPS: MARKET LOWER
1/2 cns/crns CA 12s 8.50-10.00 mostly
9.00 some 8.00 15s 8.50-10.00 mostly 9.00
few 11.00 18s 8.00-10.00 some 7.00 bins
MD 125.00-150.00 fit cns NJ 6s 4.00-5.00
8s 4.00-5.00 9s 4.00-5.00

---HONEYDEWS: MARKET LOWER
2/3 cns AZ 5s one label few 13.00 CA 5s
7.00-9.00 mostly 8.00 few 11.00 fr qual
6.00 6s 8.00-10.00 mostly 9.00-9.50 few
11.00

---MISC MELONS: 2/3 cns AZ Juan

Canary 3s 13.00 6s 13.00 Orange Flesh 8s
13.00 CA Crenshaw 4s few 13.00 5s few
13.00 6s few 13.00 Juan Canary 6s few
13.00 Santa Claus 6s few 13.00 Orange
Flesh 6s few 12.00-13.00 8s few
12.00-13.00

---WATERMELONS: MARKET
ABOUT STEADY bins per melon MD
Sangria 20-22 lb 3.00-3.25 few 4.00 24-28
lb 4.50-5.00 Crimson Sweet 20-22 lb 2.00
patriot 22 lb 2.00-2.25 24 lb avg 2.50 NC
Royal Sweet 20-22 lb 2.00-2.50 VA Crim-
son Sweet 22-24 lb 2.25-2.50

---NON-CITRUS FRUITS

---APPLES: MARKET ABOUT
STEADY cns trypk CL BOAT Granny
Smith 80s 18.00-18.50 88s 18.00 100s
18.00-18.50 113s 18.00 125s 18.00 12.5 kg
cns SF BOAT Granny Smith 80 ct/110 sz
15.00 CONTROLLED ATMOSPHERE
STORAGE cns trypk WA WAExFcy Red
Delicious 56s 15.00-19.00 72s 18.00 80s
16.00 pref label 18.00 88s 15.00-16.00
mostly 16.00 preferred labels 18.00 100s
16.00 one label 18.00 113s 16.00 125s
15.50 Golden Delicious 80s one label
18.50 88s 16.00-17.00 one label 18.50
100s 16.00 113s 16.00 U.S. ExFcy Red
Delicious 100s 14.50 113s 14.50 WAFcy
Red Delicious 64s 13.00 72s 13.00 100s
14.00 113s 14.00 125s 14.00 138s 14.00

---APRICOTS: OFFERINGS LIGHT
24 lb cns WA WAOne Patterson 1-5/8"
min few 23.00

---AVOCADOS: OFFERINGS LIGHT
cns 2 lyr CA Hass 48s offerings insuffi-
cient to quote cns lse 48 sz 27.00-28.00
mos 27.50-28.00 cns 1 lyr FL Various
Greenskin Varieties 9s 9.00 10s 9.00 12s
9.00

---BANANAS: MARKET STEADY 40
lb cns IMPORT 15.00 fair qual
12.00-14.00 sml 10.00-11.00 mos 10.00 fr
cond lwr 40 lb cns bagged IMPORT 14.00
cns institutional pk IMPORT petite 13.00

---CHERRIES: MARKET WA LOW-
ER, OTHERS STEADY 20 lb lugs UT
Bing 12 row sz & lgr 33.00 WA WAOne
Lapin 9 1/2 row sz 40.00

---FRUITS OTHER: cns 2 lyr CA
Apple Pears Shinsui 42s few 16.00 cns 12
1/2-pt bkts AZ Figs Black Mission
23.00-24.00

---GRAPES: MARKET ABOUT
STEADY 23 lb cns/lugs CA Perlette
18.00-20.00 mostly 18.00-19.00 Thomp-
son Seedless 20.00-22.00 Flame Seedless
19.00-23.00 some 24.00-25.00 fr appear
17.00-18.00 Red Seedless 23.00 White
Seedless Type 24.00 Black Seedless 24.00
20-21 lb lugs bgd CA Perlette 18.00-19.00
Flame Seedless 18.00-20.00 ord cond
8.00-12.00 Black Seedless 20.00

---KIWIFRUIT: MARKET STEADY
fits 1 lyr CL BOAT 33s 6.50 36s 6.50 39s

6.50 cns 23 lb lse CL BOAT 39 sz
10.00-11.00

---MANGOES: MARKET ABOUT
STEADY fits 1 lyr MX Tommy Atkins 10s
6.00 12s 6.00 14s 6.00

---NECTARINES: MARKET ABOUT
STEADY 25 lb cns lse CA California
Well Matured Flavortop 56 sz 19.00 Sum-
mer Grand 56 sz 17.50 64 sz 16.50-18.00
72 sz 15.00-16.00 84 sz 13.00-14.00 Sum-
mer Diamond 70 series 15.00-16.00 Sum-
mer Brite 64 sz 16.00-16.50 72 sz 16.00 NJ
Various Yellow Flesh Varieties 2 1/2"up fr
qual 8.00 2 1/4"up 15.00-16.00 2"min
10.00-11.00

---PAPAYA: 10 lb cns HI AIR 12s
13.00

---PEACHES: MARKET CA LOWER,
OTHERS ABOUT STEADY cns 2 lyr
trypk CA California Well Matured Elegant
Lady 42s 14.50-15.50 48s 13.50-14.50 25
lb cns NJ No Grade Marks Redhaven 2
3/4"up 19.00 2 1/2"up 17.00-18.00 2
1/4"up 14.00 3/4 bucrns NJ No Grade
Marks Various Yellow Flesh Varieties
2"min 12.00 SC U.S. ExOne Crest Haven
2 1/2"up 18.00 2 1/4"up 15.00-16.00 Jef-
ferson 2 1/2"up 20.00 2 1/4"up 18.00

---PEARS: 36 lb cns CA U.S. One Bar-
lett 80 sz 32.00 90 sz 30.00 100 sz
26.00-27.00 110 sz 25.00-26.00 120 sz
20.00-24.00 135 sz 19.00-20.00 150 sz 17.
50

---PERSIMMONS: OFFERINGS
NONE

---PINEAPPLES: MARKET STEADY
cns 1 lyr HI AIR 6s 11.50-12.00 cns 2 lyr
CR 10s 12.00

---PLANTAINS: 50 lb cns CB
19.00-20.00

---PLUMS: MARKET SLIGHTLY
LOWER 28 lb cns lse CA California Well
Matured Friar 50 series 22.00-24.00 70
series 18.00-20.00 80 series 16.00-18.00
25 sz 24.00-27.00 30 sz 24.00-25.00 35 sz
26.00 40 sz 22.00-25.00 few 28.00 fr cond
18.00 45 sz 24.00-26.00 60 sz 19.00-22.00
mostly 20.00 Simka 40 sz 27.00 Maturity
Not Marked Friar 35-40 sz fr qual
10.00-12.00 Simka 55 sz fr qual
10.00-12.00

---POMEGRANATES: OFFERINGS
NONE

---PRUNES: OFFERINGS NONE

**Leola Produce
Auction**

Leola, PA
July 25, 1995

Report Supplied by Auction

APPLES: EARLY VARIETIES
2.75-3.75 % BU.
BEANS: LIMA 18.00-30.00 1 1/9BU;
GREEN 7.00-14.50, YELLOW
9.00-16.50, BOTH 1 BU; ROMA AND

KENTUCKY 4.75-9.00 BU.

BEETS: RED, BUNCHED 3.25-4.75
15-COUNT, 4.25-6.75 LOOSE 1 1/9 BU.
BLACKBERRIES: 7.50-12.00 12 PINT
FLAT.

BLUEBERRIES: 9.75-14.75 12-PINT
FLAT.

CABBAGE: 2.75-5.50 CRATE, 26-44
HEAD.

CANTALOPES: SM. TO MED. .25-.65,
LGE. TO EX. LGE. .65-1.45 EA.

CUCUMBERS: 4.25-6.50 #1 1 1/9 BU.,
#2 2.75-4.25 1 1/9 BU.

EGGPLANT: 8.25-12.00 1 1/9 BU.

HONEYLOPES AND HONEYDEW:
SM. TO MED. .45-1.00, LGE. TO EX.
LGE. 1.00-1.65 EA.

PEPPERS: GREEN SM. TO MED.
3.75-5.75 1 1/9 BU., LGE. TO EX. LGE.
5.75-9.75; HOT 3.25-5.25 % BU.

PICKLES: SM. TO MED. 9.00-11.50 %
BU., LGE. TO EX. LGE. 5.00-8.75 % BU.

PEACHES: 2.75-8.75 % BU.

PLUMS: METHLEY SUGAR PLUMS
6.25-9.50 8 QT. FLAT.

POTATOES: RED AND WHITE
SMALL 5.25-9.25 % BU., MED. TO LGE.
4.00-6.25 % BU., 3.75-6.75 50 LBS.

SQUASH: YELLOW STRAIGHT-
NECK 2.00-4.75 % BU.; SMALL PAT-
TYPAN 5.50-8.75 10 LBS; ACORN
5.25-8.75 1 1/9 BU.

SWEET CORN: WHITE .60-1.50
DOZ., YELLOW AND BI-COLOR
.75-1.60 DOZ.

TOMATOES: SM. TO MED. 1.50-4.50
#1 25 LBS., LGE. TO EX. LGE. 4.75-8.50
#1 25 LBS.; CHERRY 5.50-9.75 12 PINT
FLAT; PLUM 4.75-9.25 25 LBS.

WATERMELON: YELLOW DOLLS
SM. TO MED. .35-.65, LGE. TO EX. LGE.
.65-1.05; SEEDLESS SM. TO MED.
1.50-2.75, LGE. TO EX. LGE. 3.00-5.00
EA.; SANGRIA 3.25-4.75 EA.; CRIM-
SON SWEET 1.25-2.75 EA.

ZUCCHINI: GREEN SM. TO MED.
5.50-8.50 % BU., LGE. TO EX. LGE.
2.75-5.50 % BU.; YELLOW 3.25-6.75
SM. TO MED., 1.50-3.25 LGE. TO EX.
LGE. % BU.

SALE DAYS NEXT WEEK ARE
MONDAY THROUGH SATURDAY,
8-90 A.M.

**Kutztown Produce
Auction**

Fleetwood, PA

Auction days Mon., Tues., Thurs. Fri.,
9:30 a.m.

Sat., 9 a.m.

July 21, 22, 24, 25 and 27

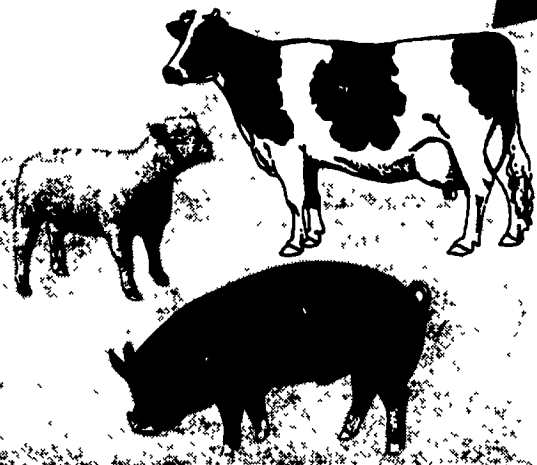
Hay and Straw at 9:00 a.m. followed by
produce

Report Supplied by Auction

APPLES: 1.00-5.50 % BU., 4.50 BU.
APRICOTS: 10.50-12.50 8 QT. FLAT.
BEANS: GREEN 1.50-10.00 % BU.,

**39th Annual
LEBANON AREA FAIR**

**Lebanon
Fairgrounds—
2 Miles South
of Lebanon, PA
Just off Rt. 72**



JULY 29 thru AUGUST 4

★ EXHIBITS ★ DEMONSTRATIONS
★ COMPETITIONS ★ SHOWS

SATURDAY, JULY 29

7 PM 4x4 Truck & Antique
Tractor Pulls
7-10 pm Country Line
Dancing

SUNDAY, JULY 30

7:00 pm Vesper Service by
Heaven Bound sponsored
by WADV

MONDAY, JULY 31

7 & 9 pm Al & Jean Shade
and the Potter County Boys

★ ENTERTAINMENT

TUESDAY, AUG. 1

7:30 pm Selection of 4-H Best
Bred and Owned Dairy Animal
and Youth Dairy Supreme
Champion

WEDNESDAY, AUG. 2

6:30 pm Big Wheel Race
7:00 pm Farmers Night Contests

THURSDAY, AUG. 3

6:30 pm 4-H Benefit Auction
7:00 pm Lawn & Garden
Tractor Pull

FRIDAY, AUG. 4

6 PM- Youth Livestock Sale
7:00 Tractor & Truck Pull
ss Modified Tractors &
True Street Stock
4x4 Trucks

★ Demolition Derby & Fireworks ★
AUG. 5, 7:30 P.M.

**ARE YOUR PROFITS GOING TO
COMMERCIAL FEED COMPANIES?**

Get it together

Weigh-Tronix takes a systematic approach to feed processing. Using technology proven both in industry and on the farm, Weigh-Tronix has developed a complete system, MFP, the Modular Feed Processor.



Modular design—Add on components designed for the system as your operation expands.

Single-source service—You're one phone call away from advice or service.

Optional PC link—Manage rations, costs, and production from your desk.

Dedicated controller—won't tie up your computer during processing.

Automatic system checks—System-wide checks, including self-diagnostics test for trouble shooting, keep MFP operating smoothly, safely, and accurately.

WEIGH-TRONIX

Weighing Products & Systems

**CALL TODAY
FOR THE BEST!**

STAVELEY
WEIGHING & SYSTEMS GROUP

• Equipment • Design • Construction • Remodeling & Repairs

• FULL LINE PARTS DEPARTMENT • WE SELL SERVICE & INSTALL •

**EMHERR
EQUIPMENT, INC.**

5 Mi South Of Lancaster On Rte 272
14 Herrville Rd. Willow Street, PA 17584
Phone 717-464-3321 or Toll Free 800-732-0053