

### Public Auction Register

Closing Date Monday 5:00 P.M.  
of each week's publication

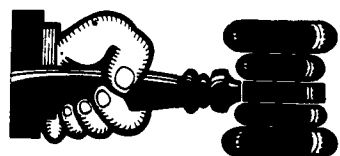
SAT. NOV. 4 - Mel's Stables at 834 Wallace Rd., New Holland, Pa. From Rt 23 in New Holland, go S. on Brimmer Ave., go 2 miles S. on New Holland Rd. to Hill Rd. Turn left on Hill Rd. Proceed 1.2 miles to sale on left. From Rt. 340 E. of Intercourse take New Holland Rd. 2.5 miles to Hill Rd., right on Hill Rd. at sale on left Mel Hoover, owner.

low Farmersville Rd. 2 Mi., Turn Left onto S. Fairmont Rd. go 6/10 Mi. to Farm on Left. Corner of S. Fairmont and Linden Grove Rd., West Earl Twp., Lanc. Co. Aaron E Martin Auction Service.

FRI. NOV. 10 - 9AM Farm equip, tractors & farm supplies. A&C Diffenbach Auction, Inc 100 W. Jackson St., New Holland, Pa.

FRI. NOV 10 - 1.30 PM State Graded Feeder Pig Sale. Carlisle Livestock Market, Inc., Exit 12 off I-81 turn South then left onto Alexander Spring Rd.,

MON NOV. 6 - Real Estate 30.7 Acre Farm w/2 House-s. From Ephrata Take 322 East Thru Hinkletown Turn Right onto Farmersville Rd. at Martin's Bike Shop Fol-



### AUCTIONEER'S DIRECTORY

Office: 717/291-1542

Residence: 717/354-9534

## JACK DELP

Certified General Appraiser  
Specializing in Farms & Land

148 East Boad Street  
New Holland, PA 17557

## ACTION AUCTION CO. INC.

Farm Equip., Dairy Dispersal  
Real Estate, Business Liquidations  
Household Goods,  
Construction Equip.  
Certified Personal Property Appraisals  
(610) 873-0901

## HFA HORNING

Farm Agency, Inc.

Courteous Real Estate Services  
Professional Auctioneers  
State Certified Appraisers  
Specializing in Farms and Land  
Alvin Horning, Broker  
Route 23, Morgantown, PA  
(610) 286-5183

### KREIDER, KLINE & GOOD

AUCTIONEERS

COMPLETE PROFESSIONAL AUCTION SERVICE  
REAL ESTATE - FARMS & RESIDENTIAL  
PERSONAL PROPERTY - ANTIQUES -  
FARM STOCK SALES - LIQUIDATIONS

RANDAL V. KLINE AUCTIONEER-REALTOR 717-733-1006  
LLOYD H. KREIDER AUCTIONEER 717-786-3394

ROY E. GOOD, JR.  
AUCTIONEER  
(717) 445-4309

Auctioneer:  
Steve Petersheim:  
Steve Jr.



## COMPLETE AUCTION SERVICE

Antiques  
Household Goods  
Farm Equipment  
Real Estate  
(610) 593-2828

249-4511.

TUES. NOV. 14 - Fed Cattle Sales. Carlisle Livestock Market, Inc. Exit 12 off I-81 turn S. then left onto Alexander Spring Rd. 249-4511.

WED. NOV. 15 & THURS. NOV. 16 - Large Two Day Sale of Farm Equipment, Etc. Located 6 Miles South Of Chambersburg, Pa. One Mile East of Marion along Rt. 914, 1/4 East Off Rte. 81, Exit 4. Owners, Jerrold & Gloria Oaks. Marion Auc-

tion Service.

FRI. NOV. 17-7 PM Horse Sale. New Holland Sales Stables, Inc, 101 W. Fulton St., New Holland, Pa.

FRI. NOV. 17 & SAT. NOV. 18 - Martin's Annual Fall Auction of Horse drawn carriages, sleighs and anti-ques. at Leb. Area Fairgrounds, Leb., Pa. Martin Aucts.

SAT. NOV. 18 - Farm Machinery, Shop Tools, Household & Produce. At Doyleburg, Pa. Benueel & Mary Stoltzfus, owners. Bryan D. Imes, auct.

TUES. NOV. 21 - 9AM Quilt, craft & Buggies. A&C Diffenbach Auction, Inc. 100 W. Jackson St., New Holland, Pa

TUES. NOV. 21 - 8PM Feeder Cattle Sale. Carlisle Livestock Market, Inc., Exit 12 off I-81 turn South - then left onto Alexander Spring Rd. 249-4511.

WED. NOV. 22 - 9AM Quilt & craft. A&C Diffenbach Auction, Inc. 100 W. Jackson St., New Holland, Pa.

### NOTICE

To assure that your Public Sale appears in the Public Sale Section we must have your advertisement by 5 P.M. Tuesday of each week's publication.



John D. Stauffer

Auctioneers

1484 Mountain Road, Manheim, PA 17545

Fulltime Courteous Professional Auction Service Since 1976

Real Estate • Farm Equipment • Antiques  
Personal Property • Livestock  
Phone 717-665-5099

### Professional AUCTIONEERING

MARTIN AUCTION SERVICE

410 W. Church Rd  
Ephrata, PA 17522  
(717) 733-3511

Real Estate • Farm Equipment  
• Antiques • Household Goods  
It doesn't cost to use our Auction Service...It Pays.  
CALL TODAY!!

## ROGERS COMMUNITY AUCTION INC.

### PLEASE NOTE NEW SALE TIMES!

Located 8 Miles East Of Lisbon, Ohio Or One Mile West Of Rogers, Ohio On St. Rt. 154.

#### FRIDAYS

Produce, Egg, Miscellaneous Auction Starts At 6 P.M.

Poultry Auctions Start At 6 P.M.

Doors Open At 7:30 A.M.

To Accept Consignments

Open Air Market All

Day And Evening

Doors Open At 7:30 A.M. To Rent Market Spaces. Over 2.5 Miles Of Outside Concessionaries And 30,000 Sq. Ft. Under Roof.

#### WEDNESDAYS

Farm Machinery Consignment Auction

The 1ST WEDNESDAY EVENING OF EACH MONTH at 3 P.M. sharp.

We are open the preceding Tuesday of each sale day to check in consignments from 8 A.M. to 8 P.M. Handling farm machinery, lawn and garden equipment, tools, fire wood, cut lumber and related miscellaneous items. Five auctioneers operating simultaneously

Hay And Straw Grain EVERY WEDNESDAY

selling truck

load lots by the bale or ton

starting at 1 P.M.

Barn Opens at 8 A.M. to Consign

Jim and Ken Baer

Auctioneers and Managers

Phone (216) 227-3233 or (216) 227-3236

"Sales Every Week Since 1955"

FRI. NOV. 24- 10AM Weekly Thurs Sale, 6 PM Feeder Cattle Sale. New Holland Sales Stables, Inc., 101 W. Fulton St., New Holland, Pa.

FRI. NOV. 24 - 1:30PM. State Graded Feeder Pig Sale. Carlisle Livestock Market, Inc., Exit 12 off I-81 turn South then left onto Alexander Spring Rd., 249-4511.

### DEALER IN ALL KINDS OF LIVESTOCK

Also Crippled & Down Cattle

## MARLIN S. IRWIN

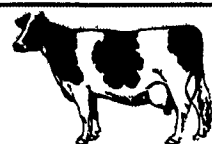
Quarryville, PA  
PH: 717-786-3016

## Dairy and Livestock Sales

### NEW HOLLAND SALES STABLES, INC.

New Holland, Pa.

Located 12 Miles East of Lancaster, just off Rt. 23



### DAIRY SALE WEDNESDAY, JULY 26

11:00 A.M. OPEN AND BRED HEIFERS  
12:00 NOON FRESH & SPRINGING COWS-HERD DISPERSAL

SEVERAL GROUPS OF OPEN AND BRED HEIFERS  
SPECIAL MENTION - 12 BIG SPRINGING HEIFERS FROM 1 FARM. SERVICE AGE PRELUDE SON - DAM VG 88 LEADMAN DAU., 2 yrs., 28,483, 949F 916P. PROJ. OVER 34,000 HER 2nd LACTATION.

54 COW HERD DISPERSAL REPRESENTED BY LEROY SMUCKER. AI BRED AND Sired BY SELECT SIRES - CALFHOOD VACC. SCC 157,000. BIG STRONG GRADE COWS WITH GOOD UDDERS - COWS IN ALL STAGES OF LACTATION - SOME DUE EVERY MONTH - 12 RECENTLY FRESH - 8 NICE SPRINGERS - COWS NOW AVG. NEAR 60 LBS. IN THE TANK.

Fresh Cows & Springers From Franklin County For Marvin Eshleman. Several Reg. Cows.

1 Load of Fresh Cows for Dale & Jim Hostetter. All 3 & 4 Yr. Olds.

Northern PA Cows From Merle Breneman.

Sales Managed By

New Holland Sales Stables, Inc.

Barn 717-351-1311 Fax 355-0706 Home 717-397-5538

Norman & David Kolb, Mgrs. 61L

# MILK

HELP YOURSELF

## CONSIGNMENT HORSE SALE SPECIAL DRAFT HORSES & MULES WELL MATCHED TEAMS

LOADS OF STANDARD BRED DRIVING HORSES

also

RIDING & SLAUGHTER HORSES

SATURDAY, JULY 29, 1995

11:00 AM Sharp

Tack To Be Sold At 8:30 AM

Middleburg Livestock Auction Sales, Inc.

Rt. 522 3 miles East of Middleburg, Pa.  
5 miles West of Selinsgrove, Pa.



For information call:

717-837-2222 or 717-837-2512

Middleburg Livestock Auction Sales, Inc.  
RR #3, Rt. 522 Middleburg, PA

Aaron Reiff (agent)  
922-1490

Clarence Shirk & Dave Imes, Auctioneers

Terms: Cash

Trucking Available

Restaurant Open