

**Hackettstown Poultry & Egg**

Hackettstown, N.J.  
 Report Supplied by Auction  
 Tuesday, July 18, 1995  
 Report Supplied by Auction  
 HEAVY FOWL .50-.95.  
 LEGHORN FOWL .60.  
 MIXED FOWL .85-.90.  
 ROASTERS .30-.40.  
 GEESSE .50.  
 ROOSTERS .70-1.90.  
 BUNNIES EACH 1.25-6.00.  
 DUCKS 1.65-1.85.  
 RABBITS .65-1.25.  
 EGGS: WHITE EXTRA LARGE & JUMBO .76-.77, LARGE .44-.71, MEDIUM .30-.45. BROWN EXTRA LARGE & JUMBO .75-.87, LARGE .45-.70, MEDIUM .42-.46.

**National Egg Market**

ATLANTA, GA  
 JULY 19, 1995  
 Prices were unchanged to higher in the Northeast and Midwest, and elsewhere, prices were unchanged. The market tone was steady to firm. Demand was light to very good, best where featured and in vacation areas. Supplies of the large sizes were

tight to about adequate and extra eggs continued to be held with extreme confidence as a result of decreased production. Supplies of mediums and smalls remained adequate. Breaking stock supplies were short to adequate, and heavy eggs were held with confidence at higher asking prices. Spent hen offerings were limited to adequate for the light to moderate demand.

**National Grain Market**

ST. JOSEPH, MO  
 JULY 19, 1995  
 Cooler weather, grain and soybean plants getting a darker green and prices dropping today. Wheat marginally steady. Corn 1 to 4 cents lower. Sorghum 6 to 9 cents lower. Soybeans took a whipping, 13 to 18 cents lower. Weather cooled down from drastic heat wave of last week and foreage much improved. However, majority of the cornbelt needs moisture and only scattered showers showing up. Traders taking profits on the boards and looking at seasonal peaks while they reestablish positions. Recent sharp jump in prices put more grain trucks on the highways. Sprinkling export orders of a little bit of everything on the books again today. Speculators watching for the rain clouds.  
 Export demand: Purchaser Commodity Tonnage Del date Sub-Saharan Africa

Hard Red Spring Wheat 60,000 Sep 1-Oct 31  
 Taiwan Corn 18,000 Aug 10-25  
 Soybeans 12,000 Aug 10-25  
 Totals: Wheat 60,000 tonnes. Corn 18,000 tonnes. Soybeans 12,000 tonnes.  
 Date Change Year ago  
 Truck bids: 07/19/95 07/18/95 07/20/94  
 Wheat: Kansas City (HRW, ORD) 5.02-5.03 dn 1 3.48-3.49 Minneapolis (DNS, 14%) 5.42 1/2 up 1 3.99 1/2 Portland (SW) 4.90-5.00 dn 8-unch 3.51-3.54 St. Louis (SRW) 4.39-4.42 dn 1 3.07-3.10 Corn, US 2 Yellow: Kansas City 2.98-3.01 dn 4-3 2.30-2.32 Minneapolis 2.71 1/2 dn 2 3/4 2.10 1/4 Southern Iowa 2.82-2.84 up 1-unch 2.19-2.20 Omaha 2.80-2.81 dn 3-4 2.16-2.19 Soybeans, US 1 Yellow: Kansas City 5.24-6.26 dn 18 5.86-5.91 Minneapolis 5.98 1/2 dn 15 1/4 5.68 1/4 Southern Iowa 5.09-6.11 dn 13-15 5.78-5.80 Cen IL Processors not available 5.80-5.88 Futures Close: Kansas City (Sept) Wheat 4.76 1/2 dn 1 1/2 3.37 3/4 Minneapolis (Sept) Wheat 4.87 1/2 up 1 3.39 1/2 Chicago (Sept) Wheat 4.54 3/4 dn 3/4 3.29 Chicago (Sept) Corn 2.90 1/2 dn 3 3/4 2.18 1/4 Chicago (Dec) Corn 2.91 1/4 dn 1 2.20 1/4 Chicago (Aug) Soybeans 6.18 1/2 dn 18 1/4 5.86 1/4 Export Bids: Barge or rail, Port of New Orleans or North Texas Gulf. US 1 HRW Wheat, Ord. Protein: 5.27 1/2 dn 1 1/2 3.78 3/4 US 2 SRW Wheat: 4.81 3/4-4.83 3/4 dn

1 3/4-3/4 3.30-3.32 US 2 Yellow Corn: 3.21 1/2-3.24 1/2 dn 3 3/4-1 3/4 2.44-2.45 US 2 Yellow Sorghum: Rail 5.50 dn 6 4.34 Barge 5.72-5.74 dn 7-9 4.29 US 1 Yellow Soybeans: 6.53 1/2-6.54 1/2 dn 18 1/4 5.99-6.00

**Pa. Grain**

July 17, 1995  
 Report supplied by PDA  
 COMPARED WITH LAST MONDAY'S MARKET FOR SOUTHEASTERN, CENTRAL, AND SOUTH CENTRAL PA: CORN MOSTLY STEADY TO .15 HIGHER, WHEAT UNEVEN, MOSTLY STEADY TO .26 HIGHER, BARLEY STEADY, OATS STEADY TO WEAK, SOME NEW CROP ON THE MARKET, SOYBEANS STEADY TO .20 HIGHER, EAR CORN STEADY TO STRONG.

**SOUTHEASTERN PENNSYLVANIA**  
 CORN NO. 2-Y RANGE 2.90-3.30, AVERAGE 3.13, CONTRACT FOR HARVEST 2.80-3.03; WHEAT NO. 2 RANGE 3.90-4.31, AVERAGE 4.10; BARLEY NO. 3 RANGE 1.55-1.70, AVERAGE 1.61; OATS NO. 2 RANGE 1.40-1.75, AVERAGE 1.52; SOYBEANS NO. 1 RANGE 5.79-6.11, AVERAGE 6.00, CONTRACT FOR HARVEST 5.96-6.11; FEW REPORTED GR. SORGHUM #2 CONTRACT FOR HARVEST 2.75; FEW REPORTED PER HUNDREDWEIGHT BUCKWHEAT CONTRACT FOR HARVEST 10.90; EAR CORN RANGE 83.00-95.00, AVERAGE 87.88.

**SOUTH CENTRAL PENNSYLVANIA**  
 CORN NO. 2-Y RANGE 2.85-3.10, AVERAGE 2.94; WHEAT NO. 2 RANGE 3.53-3.80 FEW REPORTED 4.03, AVERAGE 3.73; BARLEY NO. 3 RANGE 1.50-1.75, AVERAGE 1.56; OATS NO. 2 RANGE 1.30-1.50, AVERAGE 1.41; SOYBEANS NO. 1 RANGE 5.25-6.05, AVERAGE 5.57; EAR CORN RANGE 70.00-85.00, AVERAGE 77.29.

**SOUTHEASTERN, CENTRAL & SOUTH CENTRAL SUMMARY**  
 CORN NO. 2-Y RANGE 2.80-3.30, AVERAGE 3.05; WHEAT NO. 2 RANGE 3.60-4.31, AVERAGE 3.94; BARLEY NO. 3 RANGE 1.50-1.75, AVERAGE 1.59; OATS NO. 2 RANGE 1.25-1.70, AVERAGE 1.47; SOYBEANS NO. 1 RANGE 5.60-6.11, AVERAGE 5.86; EAR CORN RANGE 70.00-95.00, AVERAGE 82.55.

**CENTRAL PENNSYLVANIA**  
 CORN NO. 2-Y RANGE 2.80-3.30, AVERAGE 2.99; WHEAT NO. 2 RANGE 3.60-4.18, AVERAGE 3.80; BARLEY NO. 3 RANGE 1.50-1.70, AVERAGE 1.59; OATS NO. 2 RANGE 1.20-1.70, AVERAGE 1.47; SOYBEANS NO. 1 RANGE 5.60-5.95, AVERAGE 5.81; EAR CORN RANGE 70.00-79.00, AVERAGE 74.50.

**WESTERN PENNSYLVANIA**  
 CORN NO. 2-Y RANGE 2.65-3.10, AVERAGE 2.78; WHEAT NO. 2 RANGE 3.55-4.08, AVERAGE 3.78; BARLEY NO. 3 RANGE 1.50-1.56, AVERAGE 1.53; OATS NO. 2 RANGE 1.50-1.85 FEW REPORTED 1.10, AVERAGE 1.63; SOYBEANS NO. 1 RANGE 5.83-5.85, AVERAGE 5.84; EAR CORN RANGE 55.00-60.00, AVERAGE 57.50.

**MONTH AGO**  
 CORN NO. 2-Y 2.93; WHEAT NO. 2 3.65; BARLEY NO. 3 1.59; OATS NO. 2 1.61; SOYBEANS NO. 1 5.64; EAR CORN 79.62.

**YEAR AGO**  
 CORN NO. 2-Y 2.83; WHEAT NO. 2 3.02; BARLEY NO. 3 1.74; OATS NO. 2 1.49; SOYBEANS NO. 1 6.18; EAR CORN 83.53.

**Grantsville Livestock**

Grantsville, Maryland  
 Report Supplied by Auction  
 Sat., July 15, 1995  
**STOCK BULLS AND STEERS**  
 200-500 LBS. 55.00-83.00.  
**STOCK HEIFERS:** 55.00-70.00.  
 SLAUGHTER STEERS GOOD TO CHOICE, NONE AVAILABLE; MEDIUM TO GOOD 50.00-56.00.  
**HOLSTEIN STEERS** GOOD 50.00-56.00; LIGHT 40.00-51.00.  
 SLAUGHTER HEIFERS GOOD TO CHOICE, NONE AVAILABLE; MEDIUM TO GOOD 48.00-56.00.  
**BULLS** HEAVY 45.00-53.75, LIGHT 40.00-55.00.  
**COWS** FEW HIGH DRESSING UP TO 40.00, UTILITY HOLSTEIN 35.00-40.00, CANNERS 30.00-34.00, CULLS 30.00 AND DOWN.  
**VEALS** GOOD TO CHOICE 70.00-100.00, MEDIUM TO GOOD 55.00-68.00.  
**BOB CALVES:** 25.00 AND DOWN.  
**HOLSTEIN BULL CALVES** RETURN TO FARM 90-120 LBS. 40.00-65.00.  
**HOLSTEIN HEIFER CALVES** RETURN TO FARM 100-120 LBS., NONE AVAILABLE.  
**BEEF CROSS CALVES** RETURN TO FARM, NONE AVAILABLE.  
**HOGS:** TOP QUALITY 45.00-47.00; HEAVY 45.00-46.50, LIGHT 30.00-44.00, FEEDER PIGS BY THE HEAD 15.00-47.00.  
**SOWS:** UP TO 28.00.  
**MALE HOGS:** 18.00-25.50.  
**LAMBS:** 70.00-85.50; CULLS 65.00 AND DOWN.  
**SHEEP:** UP TO 25.00.

**HIGH QUALITY DISTILLERS GRAIN**

**NEW ENERGY COMPANY**  
 Corn Distillers Grain Producer  
 South Bend, Indiana

**800-462-8263**

Looking for dairy cattle feed?  
 Try our Distillers Grains!  
 Tear out this ad and call our Marketing Department for information!

**NOW OPEN**

**FOR OUR 55th SEASON**

**LAUREL FARMERS AUCTION MARKET**

P.O. Box 633  
 Laurel, DE 19956

Marketing Fresh Produce  
 Through Mid-September

Watermelons, Cantaloupes, Sugar Babies,  
 Tomatoes and More

Opening July 11 9 AM

"No buyer too big or small-  
 Pickup loads to tractor trailer loads sold-  
 Buy your own - No fee for buying  
 No broker needed"

Please call for more information

**302-875-3147 302-875-5136**

**NEED TO CUT THE FEED BILL?**

**DAIRY BLEND COMPLETE AND CONCENTRATE FEEDS**

**COMPLETE FEEDS**

**CONCENTRATE FEEDS**

#79514  
 Dairy Blend Flakes  
 14% All Natural  
 \$168<sup>52</sup>

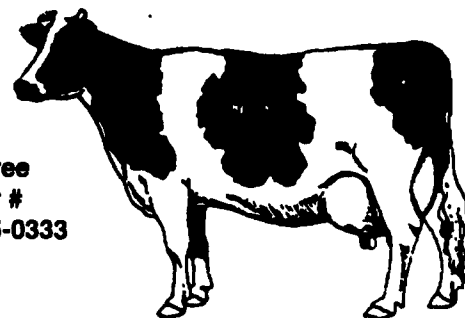
#51232  
 32% All Natural  
 Protein Pellets  
 \$227<sup>12</sup>

#79516  
 Dairy Blend Flakes  
 16% All Natural  
 \$170<sup>52</sup>

#51238  
 38% All Natural  
 Protein Pellets  
 \$254<sup>12</sup>

#79520  
 Dairy Blend Flakes  
 20% All Natural  
 \$190<sup>52</sup>

#50734  
 34% All Natural  
 Protein Pellets  
 \$263<sup>52</sup>



Toll Free  
 Order #  
 1-800-995-0333

Bulk Feed Available in 1 to 24 Ton Loads

Feed prices for week of July 24 and Subject to Change Weekly with Grain Market  
 Includes 8 ton volume discount and cash discount of 2 1/4% due 15th following month Deduct additional \$3.00 per ton if paid in 10 days



**pennfield feeds**

1-800-732-0467

Quality - Value - Service