

Lebanon Produce Auction

Route 72 North

Lebanon, Pa.

Auction Tues., Thurs. 3 p.m.

July 17

Report Supplied by Auction

RASPBERRIES: 1.50 QT.
 WATERMELONS: 2.00-3.75 EA.
 BLUEBERRIES: 1.00-2.10 PINT.
 CANTALOPES: 2.00 BOX, .50 EACH.
 APPLES: 1.00-3.00 ¼ BU.
 RED BEETS: .35 BUNCH, 1.00 BOX,
 3.50 ¼ BU.
 CABBAGE: .45 HEAD.
 BEANS: GREEN STRING .50-1.00
 BOX, 1.50-4.50 ¼ BU.; YELLOW
 STRING 1.00-2.50 ¼ BU.
 POTATOES: .50-5.00 BOX.
 ZUCCHINI: .50 BOX.
 SQUASH: .25 BOX.
 PEPPERS: .25 BOX, 6.50-9.00 ¼ BU.
 SWEET CORN: 2.00-2.50 DOZ.
 TOMATOES: 3.50-14.00 BOX.
 MEADOW TEA: 1.50.
 CEDAR CHIPS: 2.50 BAG.

Central U.S. Carlot

Pork Report

Wednesday, July 19, 1995

Report supplied by USDA

CENTRAL U.S. CARLOT PORK
 REPORT FOB OMAHA BASIS
 INCLUDES MAJOR PRODUCTION
 AREAS IN MIDWEST AS OF 3 P.M.
 COMPARED TUESDAY'S 3:00 P.M.
 CLOSE: FRESH LOINS 1.00-2.00 LOWER;
 BUTTS 2.00-4.00 LOWER; SKND.
 HAMS 17-20 LBS. 2.00 LOWER, 20-26
 LBS. 2.00-4.00 LOWER; SDL'S. BELLIES
 STEADY TO 2.00 LOWER. TRADING
 MODERATE, WITH LIGHT DEMAND
 AND MOSTLY MODERATE
 OFFERINGS.

LOADS PORK CUTS: 117.75
 41.0 LOADS TRIM/PROCESS PORK/
 PORK CUTS

LOINS, REGULAR, FRESH
 14-18 LBS., * 19.5 LOADS, RANGE
 118.00-131.00, WGHTD. AVG. 127.49.
 ¼" TRIM 14-18 LBS., 6.5 LOADS,
 RANGE 137.00-151.00, WGHTD. AVG.
 142.08.

½" TRIM/LESS 14-18 LBS., 13.0
 LOADS, RANGE 154.00-157.00,
 WGHTD. AVG. 155.73.

18-22 LBS., *, 1.0 LOADS, RANGE
 116.00, WGHTD. AVG. 116.00.

¼" TRIM 18-22 LBS., 1.0 LOADS,
 RANGE 132.00, WGHTD. AVG. 132.00.
 COMBOS 22 LBS. AND UP, 4.0
 LOADS, RANGE 62.00, WGHTD. AVG.
 62.00.

LOIN, BNLS CNTR CUT
 5-9 LBS. STRAP-ON, 0.5 LOADS,
 RANGE 268.00, WGHTD. AVG. 268.00.
 5-9 LBS. STRAP-OFF, 5.5 LOADS,
 RANGE 254.00-283.00, WGHTD. AVG.
 269.91.

BNLS SIRLOIN
 .75-1.0 LB., 0.25 LOADS, RANGE
 150.00, WGHTD. AVG. 150.00.

TENDERLOIN
 1.25 LBS. AND DOWN, UNQUOTED.
 PICNIC, FRESH
 SMKR TRM, RS, COMBO, 1.0
 LOADS, RANGE 31.00, WGHTD. AVG.
 31.00.

SMKR. TRM, SS, BOXED, RANGE
 56.00, WGHTD. AVG. 56.00 A.

BOSTON BUTT 4-8 LBS.
 13.0 LOADS, * RANGE 55.00-65.00,
 WGHTD. AVG. 61.88.
 ¼" TRIM 4-8 LBS., 13.0 LOADS,
 RANGE 75.00-84.00, WGHTD. AVG.
 80.35.

SPARERIB, FRESH
 1.5-3.5 LBS., 0.5 LOADS, RANGE
 111.00, WGHTD. AVG. 111.00.

5.5 LBS. AND UP, 1.0 LOADS,
 RANGE 41.00, WGHTD. AVG. 41.00.
 LOIN BACKRIB (COMBOS)
 FRSH/FRZN

1.75 LBS. AND DOWN, RANGE
 255.00, WGHTD. AVG. 255.00 A.

HAM, SKINNED, SELECTED
 FRESH 17-20 LBS., 14.0 LOADS,
 RANGE 52.00-55.00, WGHTD. AVG.
 53.36.

FRESH 20-26 LBS., 19.0 LOADS,
 RANGE 52.00-62.00, WGHTD. AVG.
 55.84.

HAM, SKINNED, COMMODITY
 FRESH 17-20 LBS, 2.0 LOADS,
 RANGE 53.00, WGHTD. AVG. 53.00.

FRESH 20-26 LBS., 11.0 LOADS,
 RANGE 54.00-55.00, WGHTD. AVG.
 54.09.

FRESH 32 LBS. AND UP, 5.0 LOADS,
 RANGE 56.00, WGHTD. AVG. 56.00.

BELLY, SDL'S
 SKIN-ON, FRESH
 FRESH 10-12 LBS., 4.5 LOADS,
 RANGE 34.00-35.00, WGHTD. AVG.
 34.44.

FRESH 12-14 LBS., 5.5 LOADS,
 RANGE 40.00-44.00, WGHTD. AVG.
 41.64.

FRESH 14-16 LBS., 8.0 LOADS,
 RANGE 43.00-46.00, WGHTD. AVG.
 44.44.

FRESH 16-18 LBS., 1.5 LOADS,
 RANGE 42.00, WGHTD. AVG. 42.00.

FRESH 18-20 LBS., 1.0 LOADS,
 RANGE 41.00, WGHTD. AVG. 41.00.

FRESH 20-25 LBS., RANGE 39.00,
 WGHTD. AVG. 39.00 A.

PORK TRIMMING/S/
 BONELESS PROCESSING PORK
 (CHEMICAL LEAN)

COMBO 42% FRESH, 12.0 LOADS,
 RANGE 22.00-25.00, WGHTD. AVG.
 22.29.

COMBO 72% FRESH, 13.0 LOADS,
 RANGE 42.00-45.00, WGHTD. AVG.
 42.73.

BOXED 72% FROZEN, RANGE 41.50,
 WGHTD. AVG. 41.50 A.

PICNIC CUSHION MEAT
 COMBO 92% FRESH, UNQUOTED.
 BONELESS PICNIC MEAT
 COMBO 72% FRESH, 14.0 LOADS,
 RANGE 44.00-48.00, WGHTD. AVG.

44.43.
 BOXED 72% FROZEN, RANGE 52.00,
 WGHTD. AVG. 52.00 C.

SKINNED JOWLS
 COMBO FRESH, RANGE 24.00,
 WGHTD. AVG. 24.00 C.

BOXED FROZEN, 2.0 LOADS,
 RANGE 30.00, WGHTD. AVG. 30.00.

NOTE! (*) REFLECTS ¼" OR ½"
 TRIMMED PRODUCT BROUGHT
 BACK TO A REGULAR COMMODITY
 BASIS.

ABCDE AFTER QUOTES REPRESENTS
 DAYS SINCE LAST ACTUAL
 MARKET TEST. QUOTES ARE
 DROPPED AFTER 5 DAYS OF NO TEST
 OR BEFORE IF THEY NO LONGER
 REFLECT CURRENT MARKET
 CONDITIONS.

PORK CARCASS CUTOUT

WEDNESDAY, JULY 19, 1995

ESTIMATED GROSS CUTOUT VALUES
 OF A 175 LB. HOG CARCASS
 BASED ON USDA CUTTING YIELD
 TESTS AND CARLOT PRICES. WED-
 NESDAY'S CARCASS GRADES AND
 PRICES PER CWT.:

US#1 65.01 CHANGE FROM MON-
 DAY'S VALUE -1.37; US#2 63.04,
 CHANGE FROM MONDAY'S VALUE

-1.32; US#3 61.07, CHANGE FROM
 MONDAY'S VALUE -1.26; US#4 59.10,
 CHANGE FROM MONDAY'S VALUE

-1.21.

TODAY'S CALCULATIONS FOR
 US#2 175 LB. PORK CARCASS:

SKINNED HAMS, 14-20 LBS., 21.01%
 OF CARCASS, 54.00 FOB VALUE, -2.00
 CHANGE FROM MON.; LOINS, ¼"
 TRIM, 14-22 LBS., 20.33% OF CAR-
 CASS, 145.00 FOB VALUE, -2.00
 CHANGE FROM TUES.

BELLIES, SDL'S, 12-14 LBS., 13.90%
 OF CARCASS, 42.00 FOB VALUE, -1.00
 CHANGE FROM TUE.; SPARERIBS
 3.5DN LBS., 3.03% OF CARCASS
 111.00 FOB VALUE, -2.00 CHANGE
 FROM TUES.

PICNICS, 8-12 LBS., 10.31% OF CAR-
 CASS, 30.50 FOB VALUE, -0.50
 CHANGE FROM TUE.; BUTTS, ¼"
 TRIM, 4-8 LBS., 7.25% OF CARCASS,
 80.00 FOB VALUE, -3.00 CHANGE
 FROM TUES.

JOWL, 2.85% OF CARCASS, 24.00
 FOB VALUE; NBCKBONES, 1.52% OF
 CARCASS, 8.50 FOB VALUE.

FEEB, 1.05% OF CARCASS, 15.25
 FOB VALUE; TAILS, 0.22% OF CAR-
 CASS, FOB VALUE 30.00.

TRIM 72%, 2.19% OF CARCASS,
 43.00 FOB VALUE, -1.00 CHANGE
 FROM MON.; LARD 10.85% OF CAR-
 CASS, 19.25 FOB VALUE.

TOTAL CARCASS 94.51%. US#2
 CARCASS VALUE PER CWT. 63.04.

NOTE: VALUE MAY CHANGE
 WITHOUT ADEQUATE TEST.

Central U.S. Carlot

Beef Report

July 19, 1995

Report supplied by USDA

USDA NATIONAL CARLOT BEEF
 REPORT (INCLUDES MAJOR PRO-

DUCTION AREAS IN THE MIDWEST

AND TEXAS) AS OF 3 P.M.

COW AND BULL CARCASS

FOB OMAHA

6.0 LOADS REPORTED

COMPARED TO TUESDAY'S 3 P.M.
REPORT: UTILITY CARCASSES
STEADY; CUTTER NOT ESTAB-
LISHED. DEMAND AND OFFERINGS
LIGHT.UT,BRK 2-4 450 LBS. AND UP, 2.0
LOADS, RANGE 61.50, LATEST EXTB.
MKT. 61.50.UT,BNG 1-3 400 LBS. AND UP, 4.0
LOADS, RANGE 65.50, LATEST ESTB.
MKT. 65.50.CUTTER 1-2 350 LBS. AND UP, LAT-
ESTB. MKT. 68.00 A.BULLS YG1 500 LBS. AND UP, LAT-
ESTB. MKT. 76.00-78.00 A.COW AND BULL CARCASSES
CAF WEST COAST
0 LOADS REPORTEDCOMPARED TO LAST WEEK:
MARKET FOR WEEK ENDED JULY 14,
1995.UT,BNG 1-3 400 LBS. AND UP,
RANGE 63.00.CUTTER1-2 350 LBS. AND UP,
RANGE 64.00.BONELESS PROCESSING BEEF/
BEEF TRIMMINGS
97.0 LOADS REPORTEDFRESH 90% BONELESS BEEF NOT
ESTABLISHED IN THE MIDWEST,
BUT IN TEXAS, 2.00 LOWER IN A
LIGHT TEST; 85% MOSTLY STEADY
WITH INSTANCES 2.00 LOWER; 65%
STEADY TO FIRM. DEMAND LIGHT
FOR LIGHT TO MODERATE OFFER-
INGS. BEEF TRIMMINGS STEADY ON
LIGHT DEMAND AND OFFERINGS.

FOB OMAHA BASIS
 90% FR, UNQUOTED.
 90% FZ, UNQUOTED.
 85% FR, 9 LOADS, RANGE 71.0-73.5,
 WT. AVG. 72.67.

85% FZ, UNQUOTED.
 75% FR, RANGE 61.5, WT. AVG.
 61.50 A.

75% FZ, UNQUOTED.
 65% FR, 16 LOADS, RANGE
 53.0-56.0, WT. AVG. 55.34.

65% FZ, UNQUOTED.
 50% FR, 41 LOADS, RANGE
 42.00-45.00, WT. AVG. 44.01.

50% FZ, 7 LOADS, RANGE 50.00, WT.
 AVG. 50.00.
 50% BX, 1 LOAD, RANGE 46.00, WT.
 AVG. 46.00.

BULL 92-94, 2 LOADS, RANGE
 101.00-102.00, WT. AVG. 101.50.

FOB EAST TX & OK
 90% FR, 6 LOADS, RANGE 82.0-83.0,
 WT. AVG. 82.33.

90% FZ, UNQUOTED.
 85% FR, UNQUOTED.
 85% FZ, 75% FR, 75% FZ, 65% FR,
 65% FZ, UNQUOTED.

CAF NORTH EAST AREAS
 90% FR, 15 LOADS, RANGE
 83.0-85.0, WT. AVG. 84.47.

90% FZ, 85% FR, 85% FZ, 75% FR,
 75% FZ, 65% FR AND 65% FZ,
 UNQUOTED.

CAF WEST COAST BASIS
 MARKET FOR WEEK ENDED JULY
 14:

90% FR, UNQUOTED.

85% FR, RANGE 74.0-77.0, WT. AVG.

75.20.

75% FR, RANGE 65.0, WT. AVG.

65.00.

65% FR, RANGE 53.0-58.0, WT. AVG.

55.11.

50% FR, RANGE 40.0-42.0, WT. AVG.

41.08.

**ABCDE AFTER QUOTES REPRESENTS
 DAYS SINCE LAST ACTUAL
 MARKET TEST. QUOTES ARE
 DROPPED AFTER 5 DAYS OF NO TEST
 OR BEFORE IF THEY NO LONGER
 REFLECT CURRENT MARKET
 CONDITIONS.**
 SOURCE: USDA MARKET, DES
 MOINES, IA.

St. Louis Cattle, HogsSPRINGFIELD, IL
JULY 17, 1995

Last week 650

Cattle and Calves: Compared to last
 Monday's terminal market slaughter
 steers and heifers mostly 1.50-2.00 lower. Cows
 1.00 lower. Bulls 1.00-2.00. Supply mainly
 choice and mixed select and choice steers
 and heifers. Light supply holstein steers.
 About 10% cows.

Slaughter steers: Choice 2-4 1025-1350
 lbs. 58.50-60.00; 2-3 1100-1425
 60.00-60.50, part load 61.00. Select and
 Choice 2-3 925-1250 lbs. 56.00-58.50.
 Select 2-3 925-1250 lbs. 54.00-56.00.
 Holstein steers: few Choice 2-3 1175-1300
 lbs. 55.00-57.00; Select and Choice 2-3
 1050-1250 lbs. 52.00-55.00. Select 2-3
 1000-1300 lbs. 48.00-52.00.

Slaughter heifers: Choice 2-4 900-1300
 lbs. 58.00-59.50; 2-3 950-1250
 59.50-60.00. Select and Choice 2-3
 850-1175 lbs. 55.00-58.00. Select 2-3
 825-1150 lbs. 52.00-55.00.

Slaughter cows: Breaking Utility and
 Commercial 2-4 34.00-37.00. Cutter and
 Boning Utility 1-2 35.00-37.00. High
 yielding mostly 37.00, few up to 38.00.
 Canner and low Cutter 1-2 30.00-34.00.
 Shelly Canner 1-2 25.00-30.00.

Bulls: Yield grade 1-2 1175-1900 lbs.
 43.00-48.00.

North Jersey Livestock

Hackettstown, NJ

Report Supplied by Auction

Tuesday, July 18, 1995

Report supplied by auction

CALVES .10-1.65.

COWS .11-.43.

EASY COWS .10-.33%.

FEEDERS 300-600 LBS. .31-.77.

HEIFERS .37%-.57%.

BULLS .34-.55%.

STEERS .26%-.64%.

HOGS .25-.44.

ROASTING PIGS EACH 18.00-33.00.

BOARS .13%-.17%.

SOWS .20.

SHEEP: .08-.63.

LAMBS EACH 37.00-90.00.

LAMBS PER LB. .39-1.03.

GOATS EACH 10.00-98.00.

KIDS EACH 10.00-98.00.

HIDES, 1 AT 15.00.

TOTAL: 889 HEAD.

15th Annual Ag Showcase - Cecil County Fair

Tuesday, August 1, 1995 - 10 a.m.

Cecil County Fairgrounds, Fair Hill, MD

Special Presentations: Global Positioning Systems, Selecting
 the Proper Size Equipment, and Deer Fencing.

Demonstration of: Hay, Conservation Tillage, TMR mixing, and
 Manure Handling equipment. Compact Tractor and Equipment
 Demonstration on the Fairgrounds 6:30 p.m.

Lunch available from the Cecil Farm Bureau Women

Dealers: Ag Industrial, Biggs, Inc., W.N. Cooper, Benjamin
 Haines Equipment, Hooper Equipment Company, Mid Atlantic
 Agri Systems.

Sponsors: Agway - Rising Sun, Central MD Farm Credit,
 Kencove Fence Company, Southern States - Rising Sun

Organizers: Cooperative Extension Service University of
 Maryland System, Cecil County Fair Board, Natural Resources
 Conservation Service, Department of Natural Resources.

**Call NOLT SPREADING**

HERSHEY, PA.

for your

HI-CAL lime needs

Special Summer Discounts

June - July - August

Availability of Products is also better

during Summer. Apply on -

Meadows - Hay Fields - After Small Grain



New HI-CAL Cement kiln dust with cal-
 potash - sulfur available - white in color -
 fine in texture (717) 733-8528

FARMERS -**ORDER NOW!**

"Field Ready"

Broccoli, Cabbage or
Cauliflower Transplants.Strong, Healthy Greenhouse
PLUG PLANTS.

Store them in your refrigerator

Also available in 1-gallon jugs for power &

Pruning and transplanting.

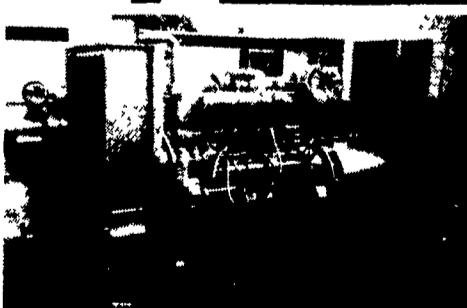
Large Quantities - Trucking Available

REASONABLY PRICED!

CALL ERIC:

(717) 464-3700

Leave Name and Location

MARTIN MACHINERY**GENERATORS**

Sales ★ Service ★ Rentals
 ★ Complete Generator Systems
 ★ PTO ★ Portables ★ 2-1600 KW
 "We Service It If You Have It
 And Sell It If You Need It"

34 W. Mohler Church Rd.
 Ephrata, PA 17522

Tel: 717-738-0300
 Fax: 717-738-4329