

1 FARM EQUIPMENT

CLAAS® Rollant round balers give you what you want



—one quality round bale after another.

Discover Quality...Discover Value...



MEYERS IMPLEMENTS, INC.

400 North Antrim Way
Greencastle, PA 17225

Phone: (717) 597-2176 Fax: (717) 597-5349

The **Rollant 66** makes fast work of 4'x5' bales. Its unique two-stage pick-up and close tines produce a clean, efficient harvest in less time. Rollatex netting wraps a bale in 10 seconds or less, and double-twine wraps it up in just 20.

The **Rollant 46** introduced CLAAS's innovative fixed bale chamber to the marketplace. This versatile baler handles all farm operations from dry hay to silage. Nobody produces a better 4'x4' bale.

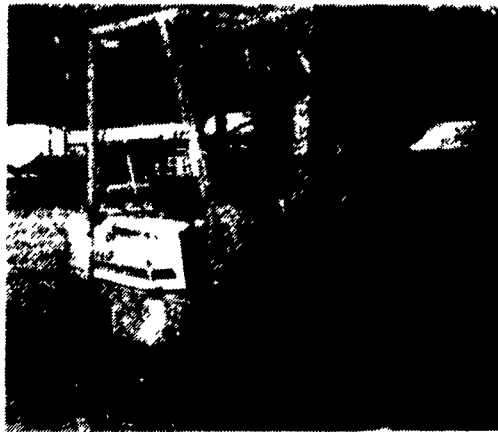
The **Rollant 42** was designed for family livestock operations. This economical investment produces weather-tight 4'x4' bales for the highest nutrient content possible.

CLAAS bales mean nutrient-filled edible hay, low spoilage, and high crude protein retention.

Each **Rollant** offers the innovative chamber, low-profile pick-up, and world class dependability. And they all share CLAAS's international reputation for low maintenance, durability and long-life.

Call now to see how you can improve the round figures on your bottom line.

Komatsu Fork Lift SJ15



2-Stage Mast, Air Drive, Rubber Tires
Call 717-538-9564
Watson, PA



HAY TEDDERS

TYPE	SIZE	PRICE
3-PT.	8'2"	\$1140
PULL	9'	\$1325
PULL	13'6"	\$2560
PULL	17'	\$3215

Ringo Hill Farms Equipment Co., Inc.
1624 Rt. 212, Quakertown, PA 18951
(610) 346-7340

MILLER EQUIPMENT CO.

RD 1, Bechtelsville, PA 610-845-2911



NEW EQUIPMENT

AGCO-WHITE -
AGCO 6144 PFA
Quadra Shift
Tractor
6100 6RN Planter

NEW IDEA -
4845 Roll Solder
3639 Spreader
5209 Disc Mower
Conditioner

BRILLION-
Deep-Til Implement
12 Ft. Pulverizer

KUHN -
GF 5000T, 17 Ft.
Gyro Tedder
GA 300T Rake

MASSEY FERGUSON
MF 1250 Tractor 4 WD
MF 1230 Hydro
Tractor 4WD
MF 240 Tractor 2WD

GEHL -
FB 1540 Blower
3250 Rectangular
Baler w/Thrower
MS 315 Spreader
3825 Skid Steer
Loader
980 16 ft. Forage Box
980 18 ft. Forage Box
DC2340 Disc
Conditioner, Demo

USED EQUIPMENT

White 2-70 Tractor
White 8600 Combine
w/Grain Head &
4RW Corn Head
NH 489 Haybine
NI 353 Spreader
Gehl 4610 Skid Loader
White 508 5 Bottom

SAR Plow 16"
Gehl CB1200 & 1000
Forage Harvesters
w/Hay Pickup & 2
Row Corn Head
(2) Used Hay Wagons
w/Metal Sides

We Ship Parts - UPS

Ford 2120, 4WD-1720 wldr-1715 4WD, tractors
Ford 4610 SU, power steering, 3 pt.,
540 PTO, new condition, diesel eng...\$12,995
Ford 4400 Tractor, with tiger boom flail mower,
good condition, new paint.....\$8,950/obo
Ford 1300, new engine, 4WD, with front
blade, runs good, 3 pt., clean.....\$6,950
Ford 1910, good condition, 4 WD, 3 pt., dual
remote, 540 PTO, canopy, 863 hrs.....\$8,500
Ford 8600, 3 pt., PTO, fresh engine.....\$7,950
Ford 800, 3 pt., live PTO, new paint.....\$4,400
Ford 9N's, 3 pt., 540 PTO, runs good.....\$2,200
Oliver 550 tractor, live PTO, 3 pt., power whls.
Kubota B1550, hydra, bi-turn steering wldr. &
under mount mower, 4WD, 499 hrs.
New Holland LB620, loader, backhoe.....\$14,995
Bobcat, model 743 skid loader, diesel engine,
canopy, good tires, 2200 hours.....\$7,950
New Ford CM222 mower w/60" front deck, broom
Mo Trim mower, 15 ft. boom, fits any 50-70 h.p.
555 Tractor, Loader, Hoe w/4 post,
ROPS, used on farm only, nice.....\$19,500
555B, 1987, cab 4WD, 2492 hrs.,
bucket w/forks.....\$28,000
555 Tractor, Loader, Hoe w/cab.....\$13,995
Huber Maintainer, good condition, front blade
2- Prime Mover masonry forklifts.\$1,495-\$3,495
Landpride 6 ft. power rake, new w/valve...\$4,950
Kewanee 3 pt. chisel plow, 11 chisels, nice..\$800
Used Disc Harrows, 3 pt., 6', 7' & 9' pull.\$450 ea.
Lely Roterrea 10 ft., shear pin clutch.....\$1,495

PARTS: 7710, cab, rear, motor, and 16x16
spd. trans; 4 wheel dr.
9030 3 pt. lift, front and rear; 100 HR motor,
and sheet metal; other parts, motor

Straley Farm Supply
(York Co.) Dover, PA



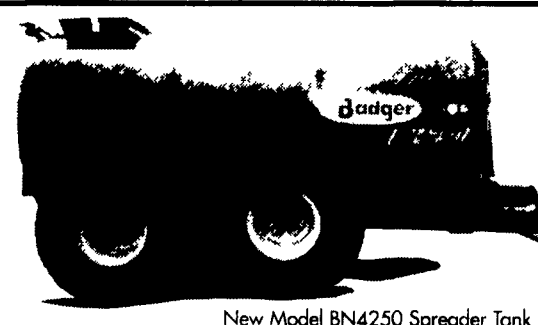
717-292-2631 Fax 717-292-0422

MANURE HAPPENS!



Badger's new liquid manure tanks handle it faster than ever before!

Badger tanks are built to load fast, spread fast - they'll cut your field and tractor time like never before.



New Model BN4250 Spreader Tank

From 4250 to 0 gallons in less than six minutes!

- **Cor-Ten Steel Construction** - makes tanks 20% stronger and 8 times more corrosion-resistant than tanks made of 1/4 in mild steel, yet it's lighter in weight for fuel savings
- **Heavy-Duty Undercarriage and Drawbar** are ruggedly designed to give you many years of trouble-free use. High ground clearance makes it easier to haul over rough terrain
- **High Flotation Tires** - help reduce fuel consumption and ground compaction
- **Heavy-Duty Impellor** - features four cutting blades that chop up bedding, long straw and weeds to provide trouble-free spreading
- **Liquid Level indicator** - shows manure level at all times
- **Discharge Nozzle** - provides wide angle, uniform 30-50 ft spread pattern, depending on liquid content and impellor operating speed
- **Rear-Mounted Injectors** - available as an option
- **Best Warranty in the Industry:** 10-year full-price warranty on barrel

For complete information on Badger's full line of spreader and vacuum manure tanks, see your Badger Dealer today **because manure happens!**

MODEL BN4250 SPREADER TANK

List \$19,925 • CASH \$14,750 • DEMO \$10,900

Show-Ease Stall Co.

873 Willow Road, Lancaster, Pa. 17601

PHONE: (717) 299-2636



J & F EQUIPMENT

(717) 859-3283

No Reasonable Offer Refused
Custom Repairs On All Makes Industrial & Farm Equipment



JD 450 crawler loader, like new U/C, cleaned & painted \$10,000



JD 544B with logging forks or bucket \$22,000

WE ARE BUYERS FOR CONSTRUCTION EQUIPMENT NEEDING REPAIRS

Bobcat 533 Skid Loader, Diesel.....	\$4,800
'89 Bobcat 743 Skid Load.....	\$7,500
IH 270 Loader Backhoe, Hydrostatic Trans Slips.....	\$4,500
JD 350 or 450 Ripper, Good Condition.....	\$1,000
'83 JD 350C, 6-Way Blade.....	\$14,500
JD 350C Crawler Loader, Good Condition.....	\$13,000
JD 450B 6-way Rebuilt Trans, Good U/C, Cleaned & Painted.....	\$13,000
JD 544A Wheel Loader.....	\$13,500
JD 544A Wheel Loader, New Paint, Good Cond.....	\$15,000
JD 644B.....	\$24,000
JD 755 crawler loader, good U/C, cleaned & painted, rebuilt motor.....	\$21,000



Case 1840, Choice of 2 \$12,000



JD 450C crawler loader, new U/C, cleaned & painted \$16,000