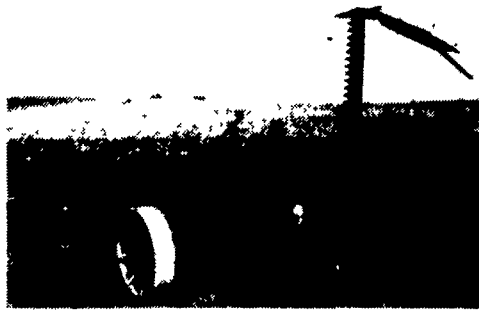
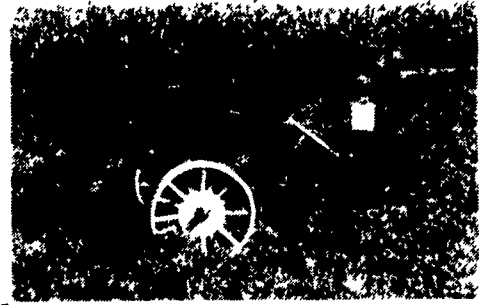


JD 443 Corn Head, Rebuilt Snapping Rolls, Good Chains, Repainted, Asking \$4000 OBO (717) 249-2317

**The I & J Cultivator**



MOWERS: 3 point or trailing features: guards & blade, move back and forth cuts like a scissors, virtually no plugging. Great for the grazing areas.



DEEP TILL SLITTER: Available in 1 or 2 shanks, optional hydraulics. On Sale Now

**I & J MANUFACTURING**  
DEPT. LF, 5302 Amish Road • Gap, PA 17527  
**717-442-9451**

(Call Between 8:45-9:00 A.M. Weekday Ask For Jake)

Cub Cadet 1512D w/Deck  
Cub Cadet 2072 w/70" Deck  
Cub Cadet 1862 w/44" Deck  
Gravely Pro Master 30H w/72" Deck

**USED EQUIPMENT**

JD 1219 Mower Conditioner  
IH 1190 9' Mower Conditioner  
IH 800 6R Planter  
Kuhn 200 Mower Conditioner  
Kuhn SC300 Mower Conditioner  
NI 207 Spreader  
IH 510 Drill 18x7  
Woods HD 315 Mower  
NI 484 Round Baler  
Gehl 1500A Round Baler  
NH 66 Baler  
72" Manure Forks for 2250 loader  
JD Forage Blower  
(1) Little Giant 28' Elevator  
Cub Cultivators  
Cub 54A Blade  
NI Drop Spreader  
NI 555 Baler  
Woods RM 59 Mower  
Mott 5' Mower  
Woods 1250 Mowing Machine w/Bagger

**BIGGS INCORPORATED**  
190 Biggs Hwy., Rising Sun, MD  
**410-658-5531**

1995 CASE CORPORATION



**WISCONSIN HEAVY DUTY ENGINES**

REPLACEMENT ENGINES  
REPLACEMENT SHORT BLOCKS  
Trade-In Available - Large Parts Inventory  
Complete rebuilding

**JULY SPECIALS**

**WISCONSIN ENGINES & SHORT BLOCKS**

W41770, 35 HP, Elec. Start.....As Low As \$2295.00  
VH4D 30 HP, Elec. Start.....As Low As \$2250.00  
VH4D, 30 HP (Low Hours) Repl. Engine.....As Low As \$745.00

**WISCONSIN & ROBIN SPECIALS**

3 HP - 6-1 Reduction \$250 5 HP - As Low As \$240.00 8 HP - As Low As \$330.00  
3 HP - As Low As \$205.00 11 HP - As Low As \$395.00 8 HP - Electric \$325.00

**Rockford & Twin Disc Clutch Parts**

Kohler 16 HP Engine, Electric Start - \$650.00

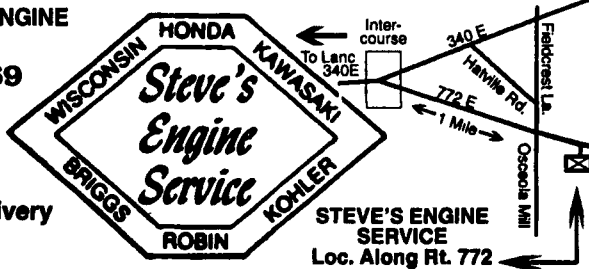
**Honda SPECIAL**  
2.2 HP to 20 HP Engines

**Kohler SPECIAL**  
6 HP TO 25 HP Engines  
25 HP As Low As \$1085.00

We Also Sell & Service The Following: Tecumseh - Briggs & Stratton - Kawasaki - Wisconsin Robin - Onan  
• Industrial: Ford & Continental Engines, Honda, Lincoln, Hobart, Miller Welders • Parts & Service

FOR ALL YOUR ENGINE NEEDS CALL:  
**717-768-7669**  
3918 E. Newport Rd.  
Gordonville, PA 17529

■ U.P.S. Daily  
■ Pick-up & Delivery Available



STEVE'S ENGINE SERVICE  
Loc. Along Rt. 772

**FOR 1**  
**Does your furnace**

- ✓ Heat your home *and* hot water
- ✓ Heat your home *and* detached garage
- ✓ Burn wood and coal *and* either natural gas, oil or propane

This furnace switches back and forth automatically

Call today for all the details!

**Mahoning Outdoor Furnaces**

"The natural way to heat"

**MAHONING OUTDOOR FURNACES**

**814-277-6675**

Call For Dealer Location Nearest You



Liquid Manure Pumps  
Portable & Stationary

**ZIMMERMAN HEAVY DUTY PORTABLE ELEVATORS**



WELL BALANCED, RUGGEDLY BUILT FOR MANY YEARS OF TROUBLE FREE SERVICE

From 28 Ft. to • 28 Ft. - \$2,195  
48 Ft. Available • 32 Ft. - \$2,350

- Case 2090 Tractor, FWA, Cab & Air, Nice...\$14,900
- MF 65 Tractor, Diesel, Engine Completely Rebuilt, Painted.....\$5,400
- JD LA, Restored, Plow Cultivators.....\$3,200
- JD A.....\$1,800
- IH 1086 Tractor, Cab, Heat & Air, 20.8x38 Tires.....\$13,900
- IH 966 Tractor.....\$8,750
- IH 806 Tractor.....\$5,800
- IH 766 Tractor, cab, 2900 Hrs.....\$9,750
- IH 1256 Tractor.....\$8,700
- IH 1066 Tractor.....\$8,700
- IH 1466.....\$8,900
- Gehl 1200 Harvester w/Table.....\$3,800
- NH 890 Harvester w/Table.....\$3,800
- (2) NI 323 Corn Pickers, Like New....choice \$3,200
- (2) Gehl 3038 Corn Heads.....choice \$1,600
- Brillion Packer/Seeder, Excellent.....\$2,900
- NH 402 Crimper.....\$1,100
- NH 456 Mower.....\$1,650



**MILLER'S REPAIR**  
1 Mile North of Bird in Hand  
8 Miles East of Lancaster  
Ph. 717-656-6109

MILLER BALE GUARD SCHAEFER TORO

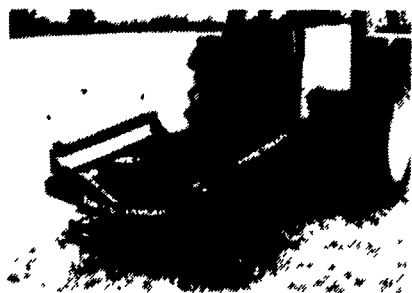
**TANCO**

**BALE WRAPPER**

There is a difference - Check it out!

"Seeing is Believing"

Stop in — get the 10 reasons why you should buy a



Call 717-222-9090 - 9020 for PEQUEA & Flexi-Bale Bale Carrying Wagons



**SCHAEFER**  
Barn Cooler Fans

**USED EQUIPMENT**

- (3) 4 Star Tedders
- (2) 2 Star Tedders
- (1) Deutz-Fahr Rake
- (1) Farmall A Tractor
- (1) 622 NI Blower
- (1) Tandem Axle Dump Trailer
- (1) Tanco Wrapper 20"
- (1) Kelly Ryan Centerline bagger
- (1) Demo Opticut Deutz-Fahr baler

**NORTHEAST DISTRIBUTORS & EQUIPMENT**

Rt. 106, W. Clifford, Pa. 18413

717-222-9090 or 717-222-9020

HOURS: Mon.-Fri. 9-8  
Saturday 9-2  
Sunday - Closed

FOR MORE INFO CALL OR WRITE

DIRECTIONS TO OUR MIDDLETOWN STORE- On your road map, we are on Route 230 mid way between Middletown & Elizabethtown. Take the Toll House Rd. exit off Rt. 283, turn and go to stop at Rt. 230, go east on 230 1-1/2 ml. on the right.

(717) 944-0318



DEPARTMENT L F  
4284 EAST HARRISBURG PIKE  
MIDDLETOWN, PA 17067

**AUTOBODY PARTS, PAINTS & SUPPLIES**

- ACRYLIC ENAMEL PAINT AS LOW AS \$28.95
- URETHANE HARDENER DOES A GAL. \$12.95
- SANDPAPER-6" DA SELF ADHESIVE, 100 PER ROLL LOW AS \$18.50, ALSO DRY BACK DA, WET & DRY SHEETS, LONG FILE!
- 73-79 CHEVY, FORD, TK FENDERS \$49.95
- BODY FILLER-CASE OF 4-GAL. \$33.95
- 100% OF OTHER ITEMS AT BIG SAVINGS!!



**"TRAILER PARTS"**  
ANGLE & CHANNEL IRON, BOX TUBING, LIGHTS AXLES, COUPLERS, WIRING, CHAINS & TIEDOWNS, Etc., Etc.



**CLASS III HITCH RECEIVER**  
10,000 Lb. MTWR, In Stock For Most Domestic & Import Pickup Trucks & Vans.  
FOR MOST POPULAR FORD CHEV. & DODGE PICKUPS and FORD EXPLORER KIT  
OTHER APPLICATIONS UP TO \$99.95



\$79.95

**AIR COMPRESSORS**

8 HP. VERTICAL ASME CODED TANKS, 2-STAGE PUMPS, CAST IRON CYL. INDUSTRIAL MODELS W/MAG STARTER F REQ



LOW AS \$899.00 ALSO 7 1/2 HP. AVAILABLE



**SAND BLASTERS OF MANY SIZES, CUTS RUST IN ONLY MINUTES**

WE HAVE 100s OF HAND TOOLS, AUTO PARTS, STATIONARY EQUIPMENT AND MORE AT THE STORE. STOP OUT AND BROWSE