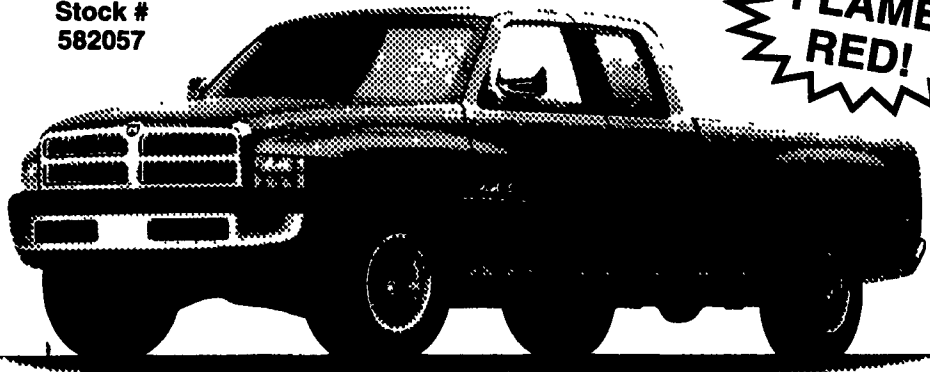


'95 RAM CLUB CAB 4x2 SLT SPORT

Stock #
582057



**FLAME
RED!**

6½' Cargo Box
8800 LB G.V.W.
360 V-8 MPI Engine
H.Duty 4 Spd. Auto Transmission
Trailer Hitch
Heavy Duty Cooling
Full power
Running Boards
Bug Shield

List \$25,873.00

SAVE \$2190.00

NOW \$23,683

HORNING



Dodge CHRYSLER Plymouth

Jeep Eagle

East Main St. (Rt. 22) New Holland
Hours: Til 8:30 Daily, Sat. Til 3 PM

717-354-4261

1-800-772-2411



1985 Mack R Model - 350
Eng - 13 Speed - 38,000
Rears-Power Steering and
Wet Line Kit



1970 Centerville Tag-A-
Long - 20 Ton - Air Brakes
\$6,500.00 or Best Offer

(717) 438-3354

QUARRYVILLE

CHRYSLER PLYMOUTH DODGE

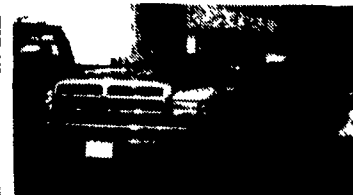
Only 10 Minutes South Of

800-781-8220

Lancaster On Rt. 222

In The
Of Lancaster County

**OVER \$1,000,000 IN DODGE
TRUCK INVENTORY
CLEARANCE PRICED NOW THRU JULY 31ST**



1995 Dodge Ram 2500 Pickup, Cummins Turbo
Diesel, SLT, Loaded!



1995 Dodge Ram 2500 4x4 ST, Silver, Auto,
AM/FM, 5 9L, Great Work Truck . . . \$19,995*
*(PA Farm Bureau Members)



1995 Chrysler LeBaron Convertible, Loaded,
Chrysler Program Car, MSRP, \$19,000 Now \$15,995

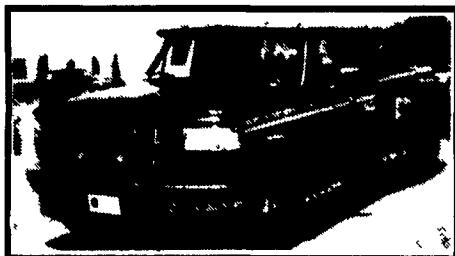


1989 Dodge Ram Wagon LE, 8 Pass, Dk Blue, Air,
Tilt, Cruise, Cass, 318 V8! . . . \$6,995
*(PA Farm Bureau Members)

Mark Vills • Pickups • Broncos • Stake Body • Crew Cabs

Contours • Aspires • Diesel Pickups • Mustangs • Thunderbirds

Explorers • Grand Marquis • XLTs • Custom Vans



**Great Selection
F250's & F350's
Supercab &
Crew Cab**
Power-Stroke Diesels
In Stock



'95 FORD F-250s & F-350s
Plow Trucks, Utility Bodies, Crew
Cabs, Turbos in Auto & Manual



'95 FORD F350 4X4 DUALLY
Centurion Conversion, 5-Speed, 7.3
Turbo Power Stroke Diesel,
AWESOME MACHINE



'95 FORD F350 DUALLY 4X4
Cab & Chassis, 161" Wheel Base,
460 V8, XLT Pkg., AC, #7057



'95 FORD F250 4X4,
STAHL SERVICE BODY
351-V8, Auto., #6968
Was \$28,435 NOW **\$24,999**



MERCURY VILLAGER
10 to Choose From
STARTING AT **\$20,000**



FORD AEROSTAR
8 to Choose From
STARTING AT **\$16,000**



FORD WINDSTAR
25 to Choose From
STARTING AT **\$19,000**



'93 FORD F150 SUPER CAB
4x4, 302, AT, Loaded, XLT,
33,000 Miles, #P2253
WAS \$20,999 NOW **\$19,999**



'90 FORD F150 SUPER CAB
XLT, 302-V8, Automatic, Clean,
only 50,000 Miles, #P2252
\$14,499



'95 GEO TRACKER
Automatic, Convertible, #66928
Was \$14,888
NOW **\$13,999**



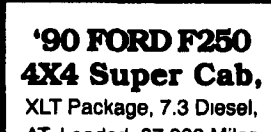
**'93 FORD SUPER
DUTY STAKE BODY**
7.3L Diesel, XLT, AC, 5-Speed,
Cassette, 39,500 Miles,
#P2288



**'94 MERCURY
VILLAGER LS**
8,000 Miles, Beautiful, \$26,000 New,
#P2257 Was \$20,999
NOW **\$19,999**



**'93 MERCURY
VILLAGER**
Loaded, Only 28,000 Miles,
#P2283, Cost Brand
New \$23,000
YOURS FOR ONLY **\$17,499**



**'90 FORD F250
4X4 Super Cab,**
XLT Package, 7.3 Diesel,
AT, Loaded, 37,000 Miles
#7017A, Was \$17,900
NOW **\$16,999**

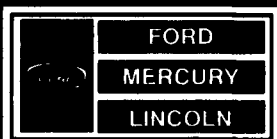


**'92 PLY. GRAND
VOYAGER**
6-Cyl., AT, Loaded, 27,000 mi.,
#6774A Was \$14,999
NOW **\$14,299**



**'89 FORD F250
4X4**
351 V8, AT, Excellent Work
Truck w/Western Plow,
#6731P, Will Move Fast At
\$13,999

Unless the Sheehy Emblem is on Your Car or Truck, . . . You Probably Paid Too Much!



SHEEHY LEBANON

-20th & CUMBERLAND STS. - RT. 422 WEST
9-9 DAILY; 9-5 SATURDAY • SHEEHY HOTLINE (717) 272-7671 OR 533-5293

PARTS DEPT OPEN
DAILY 8-5
SAT 8-12
717-273-8168

Mystiques • Cougars • Continentals • Town Cars • 4x4s • Rangers