

Top Pennsylvania DHIA Herds By County For June

(Continued from Page A32)

NELSON OCKER	51.3	20217	703	3.5	635	3.1
MOROTAI FARMS	74.8	19174	668	3.5	624	3.3
SUN FIELDS	56.5	19517	724	3.7	618	3.2
FREDRIC KNEPPER	106.3	16701	807	4.8	615	3.7
HUNTINGDON						
LOCUST LAKE FARM	147.7	24204	934	3.9	773	3.2
GEARY E SHADE & SONS	99.2	22990	858	3.7	757	3.3
TIMOTHY R PEACHEY	88.1	22343	833	3.7	729	3.3
GIBBONEY FARMS	61.4	22694	829	3.7	707	3.1
EVERGREEN FARM NO 3	1537.8	22609	784	3.5	706	3.1
TOM & SHARON SPICHER	62.3	21208	810	3.8	704	3.3
OMER KING	55.0	20759	695	3.3	687	3.3
DEAN E VARNER	52.1	21026	754	3.6	684	3.3
MORNER FARMS	205.6	21931	795	3.6	675	3.1
BEHRER FARMS	196.4	21485	782	3.6	675	3.1
JAMES BOONE	49.9	21756	812	3.7	673	3.1
JOHN W LYNN	86.1	21114	757	3.6	672	3.2
SANGREY FARMS	104.9	20930	759	3.6	668	3.2
RAYMOND TUSSEY	44.9	21141	753	3.6	666	3.2
DURBIN FARMS	67.3	20275	763	3.8	664	3.3
INDIANA						
MILOS & SANDY SINAN	106.4	29268	1081	3.7	902	3.1
PLEASANT VIEW FARM	130.2	25789	1157	4.5	822	3.2
GRIPFIELD FARMS	71.9	24477	873	3.6	800	3.3
NEAL DAIRY FARM	86.2	22852	739	3.2	753	3.3
DALE & RODNEY BLOOM	134.8	23764	915	3.8	750	3.2
JERRY NESBIT	114.5	21815	805	3.7	713	3.3
ROBERT LYDIC	43.5	22895	725	3.2	703	3.1
PAUL & KAREN SHERRY	58.3	22103	1026	4.6	671	3.0
LARRY H MARSHALL	20.3	21433	985	4.6	666	3.1
BLOSSOM HOLLOW FARM	57.3	20988	964	4.6	658	3.1
JEFFERSON						
ALLISSONS DAIRY FARM	116.1	20951	647	3.1	655	3.1
BLACK VALLEY FARMS	55.6	19404	736	3.8	641	3.3
MICHAEL ZOLOCISIK	14.2	20389	685	3.4	632	3.1
DAN L HAWCOCK	65.3	19563	506	2.6	630	3.2
DONALD SHARP	44.7	18945	750	4.0	628	3.3
BURK-LIN FARMS	41.7	28181	1047	3.7	887	3.1
LONDONDALE FARM	56.6	26852	989	3.7	883	3.3
MITCHELLS DAIRY FARM	84.0	23051	824	3.6	718	3.1
HIGHLAND H FARMS	24.0	20458	865	4.2	706	3.5
DONALD DIXON	39.0	20940	791	3.8	669	3.2
REITZ HAVEN FARM	63.6	20588	765	3.7	662	3.2
LEE ANN DAIRY FARM	22.2	22009	718	3.3	659	3.0
DAN KELLER	15.6	20782	790	3.8	657	3.2
WAY-WIN VALLEY FARM	44.7	19976	730	3.7	646	3.2
WAYNE & RITA SHAFER	39.8	19735	741	3.8	630	3.2
GREGORY L KENNIS	21.9	20008	698	3.5	622	3.1
MORREYS SPRUCELAWN	95.0	19090	760	4.0	616	3.2
D & L FARM	50.3	19409	744	3.8	616	3.2
LUTHER BURITE	109.4	18487	720	3.9	614	3.3
PINE VALLEY FARM	48.1	18944	727	3.8	599	3.2

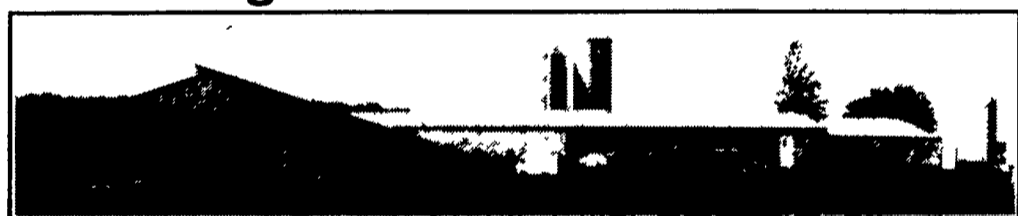
GLEN + TRACEY HENRY	40.8	25347	918	3.6	816	3.2
TUSCARORA RUN HILSTYS	65.3	24298	881	3.6	772	3.2
MARCUS J ZOOK	72.3	22653	775	3.4	728	3.2
RICK+JEANETTE SAWER	42.0	21590	773	3.6	712	3.3
JAMES L SWARTZ	42.1	21274	740	3.5	693	3.3
R B + FRANK CRAMFORD	28.1	22153	803	3.6	690	3.1
DARYLADEL BRUBAKER	86.9	20777	764	3.7	690	3.3
SPEERETTE FARM	68.2	21732	786	3.6	689	3.2
ROBERT P AUER	65.7	21417	703	3.3	684	3.2
STEVE+BARBARA WILSON	36.7	21175	776	3.7	681	3.2
RAYMOND E KAUFFMAN	63.5	21046	756	3.6	673	3.2
BARRY E+BABE A LUCAS	64.4	20613	733	3.6	666	3.2
MYRON+MARY GERMAN	39.4	20940	704	3.4	654	3.1
DONALD EVERITT SON	78.0	19745	741	3.8	652	3.3
BARBARA E BRUBAKER	56.1	20716	694	3.3	646	3.1
LACKAWANNA						
FRON BROS	52.6	21602	760	3.5	677	3.1
PAUL+MARK DARLING	53.3	20625	796	3.9	675	3.3
JOHN FRON	39.5	21356	718	3.4	672	3.1
ANDREW & GEO YEDINAK	52.7	19676	788	4.0	654	3.3
PAUL HANWING	48.9	18589	737	4.0	606	3.3
ANASA HILL FARM	108.0	17777	681	3.8	599	3.4
HARRY/ALLAN MC LAIN	42.3	16181	564	3.5	523	3.2
ELWOOD WHITE	35.9	15852	518	3.3	491	3.1
CARL J ROSIAK	37.9	14152	557	3.9	460	3.3
LEE COURTRIGHT	34.3	13915	514	3.7	446	3.2
MERLE + ROBERT LEWIS	57.0	12108	433	3.6	382	3.2
LANCASTER						
STAR ROCK FARMS	84.3	23035	809	3.5	736	3.2
FRANKLIN VIEW FARMS	126.4	21597	808	3.7	694	3.2
J HAROLD FRITZ	161.3	21036	750	3.6	688	3.3
NELSON R HABECKER	71.4	21366	793	3.7	684	3.2
TOM + DALE SMITH	19.2	21054	659	3.1	684	3.2
SINGING MAPLE FARMS	76.2	20587	784	3.8	663	3.2
LOG HOUSE FARM	68.2	20411	734	3.6	655	3.2
BENJUEL B STOLTZFUS	48.5	20993	723	3.4	653	3.1
PAUL H ROHRER & SONS	180.2	20983	785	3.7	647	3.1
TROUT SPRING FARM	52.5	20234	705	3.5	642	3.2
MAR-VIL ACRES FARM	47.1	19233	726	3.8	631	3.3
J ROBERT KINDIG	54.7	19013	708	3.7	611	3.2
CHRIST P KING	41.0	19164	663	3.5	600	3.1
RAYMOND H GOOD	71.4	19219	687	3.6	599	3.1
SAMUEL K FISHER	30.9	18769	679	3.6	598	3.2
LAWRENCE						
MICHAEL BOHONIK	39.3	41344	700	3.7	678	3.2
PAUL LAWRENCE	52.8	21509	775	3.6	678	3.2
LARRY GEWITZ	22.8	18680	713	3.8	666	3.6
JOE HAMMERSCHMIDT	63.6	20063	689	3.4	654	3.3
HARRY E KAUFMAN	36.9	19456	793	4.1	643	3.3
RICHARD J KIND	190.1	19380	742	3.8	630	3.2
ROB MCKISSICK	34.5	19153	710	3.7	626	3.3
TROTACRE FARM	41.5	18076	816	4.5	619	3.4

SNYDER DAIRY FARM	103.7	19015	687	3.6	611	3.2
LEFT-MAC FARM	64.3	19101	711	3.7	604	3.2
S WELLS MC CREADY	70.4	19221	663	3.4	601	3.1
KEHLAND FARM	78.8	18876	699	3.7	598	3.2
LEBANON						
CURVIN+DANN GOOD	74.9	27005	1021	3.8	877	3.2
DAVID+CHRIS WILLIAMS	64.3	27150	883	3.3	861	3.2
J GORDON HITT	53.7	25717	969	3.8	855	3.3
JAY W GOOD	63.9	26773	896	3.3	846	3.2
THOMAS+SHIRLEY KRALL	88.3	24499	867	3.5	819	3.3
ARNOLD ACRES	58.8	25190	870	3.5	817	3.2
IRVIN E BRUBAKER	67.2	25908	871	3.4	815	3.1
JOHN + SHARON KLINE	69.5	26031	898	3.5	813	3.1
BRUCE R HELLINGER	19.0	24581	677	2.8	787	3.2
LUKE BRUBAKER	80.4	24556	775	3.2	781	3.2
DAVID BRANDT	103.5	24786	939	3.8	779	3.1
NELSON +JULIA MARTIN	73.7	23666	883	3.7	776	3.3
GARY LEWIS	83.1	23734	863	3.6	767	3.2
LEONARD+GRACE BRUBAKER	64.4	23671	819	3.5	764	3.2
ROSE O MARTIN	88.1	24176	849	3.5	762	3.2
LUZERNE						
FLOYD+GARY RINEHIMER	55.8	21514	903	4.2	678	3.2
HILLSIDE FARMS INC	76.8	20427	912	4.5	675	3.3
PAUL STOSS JR	64.5	21117	781	3.7	673	3.2
EDSEL+SCOT RINEHIMER	55.2	20078	811	4.0	637	3.2
DENNIS MOYER	54.6	20156	785	3.9	632	3.1
MARTIN SMITH	32.3	20260	725	3.6	626	3.1
C K TROXELL FARMS	120.4	19287	695	3.6	611	3.2
CHAS & KEVIN DRASHER	35.9	17689	724	4.1	609	3.4
JEANETTE+CHARLES YOST	34.2	19136	663	3.5	605	3.2
PECORA BROS	206.5	17839	725	4.1	598	3.3
ROBERT ROUGH	52.1	18371	752	4.1	592	3.2
ERIC STEVENS	31.0	17629	698	4.0	573	3.2
MANZONI BROS	96.2	17801	726	4.1	569	3.2
ALBERT BROVAN	33.5	15972	650	4.1	522	3.3
LYCOMING						
RON + LORI HEMBURY	61.0	25904	965	3.7	834	3.2
BOSCH FARMS	55.7	24040	804	3.3	774	3.2
EUGENE W HALL	70.8	22039	877	4.0	766	3.5
DARYL & LISA SCHAFFER	48.8	22655	692	3.1	734	3.2
LOST BROOK FARM	161.9	21517	840	3.9	700	3.3
MARVIN L WALTZ	77.9	21015	786	3.7	682	3.2
CHARLES F ULMER JR	59.2	21131	772	3.7	681	3.2
SCHEW-CREST FARMS	51.7	20797	733	3.5	666	3.2
MICHAEL & LARRY FRY	108.3	20749	792	3.8	666	3.2
CHAS+MARLANNE ROGERS	55.0	20288	605	3.0	648	3.2
STEVEN C SUSAN NEFF	63.9	19793	694	3.5	640	3.2
ROBERT C BROWN	46.0	18858	628	3.3	636	3.4
FRANKLIN J FINCK	97.4	19546	746	3.8	636	3.3
FRANK + BARB HARTLEY	41.4	20017	620	3.1	629	3.1
JOHN P LEATHERMAN	52.9	19445	677	3.5	629	3.2
MCKEAN						
ALAN KINNEY	30.0	20106	794	3.9	655	3.3
NEAL D GORDON	39.1	20080	727	3.6	641	3.2
HANTZ FARMS	34.6	18243	716	3.9	601	3.3
MERCER						
PAULA DELL HOLSTEINS	61.4	25280	891	3.5	821	3.2
EDWIN C OLSON	34.8	24222	839	3.5	777	3.2
ROBERT ERIC OLSON	26.6	23032	809	3.5	756	3.3
AMAZING GRACE DAIRY	70.9	22724	810	3.6	747	3.3
SHERRY IVANCIC	28.0	21717	824	3.8	746	3.4
DALE L KEPNER	36.1	22590	841	3.7	730	3.2
RALPH+GARY OAKES	25.7	22393	818	3.7	726	3.2
DON+KATHY CORNELIUS	56.2	21584	817	3.8	723	3.3
RABOLD DAIRY	48.9	22389	819	3.7	717	3.2
PAUL J CRITCHLOW	70.7	22345	710	3.2	709	3.2
DAVID MELTON	36.6	22009	808	3.7	706	3.2

(Turn to Page A34)

KING CONSTRUCTION CO.

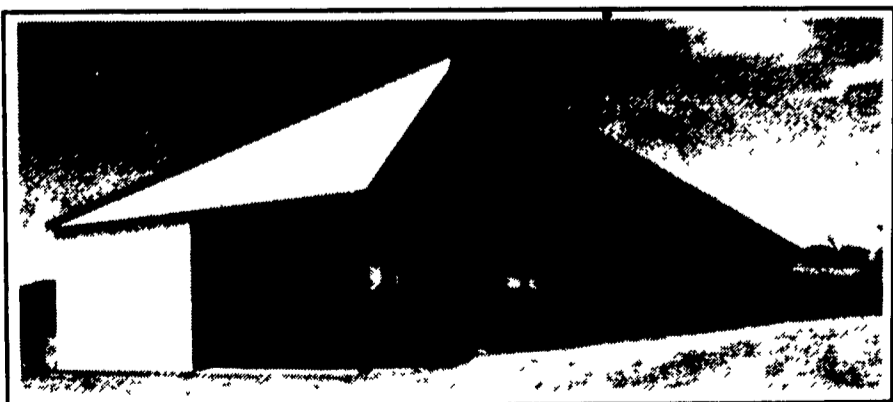
Specializing In Free- Stall Barns, Milking Facilities and Heifer Barns



44 X 200 3-Row Slatted Free Stall Barn & Milking Center



8 Ft. Deep Pit With Waffle Slats And Rubber Dust Mattresses.



32' X 180' Virginia Style Heifer Barn Built In Myerstown

KING CONSTRUCTION CO.

601 OVERLY GROVE RD., NEW HOLLAND, PA 17557

(717)354-4740 • PHIL VAN LIEU (HOME): (717) 259-9077



"When we were looking for a milk market, we chose Atlantic Dairy Cooperative because of its financial stability. ADC is a progressive cooperative that concentrates on what it does best - marketing milk."

—John Mayer
Taneytown, MD

ADC Is the Place To Be

Financial stability and expertise in milk marketing - the outstanding benefits that John Mayer refers to - are among the strengths of the premier dairy cooperative in the region. Atlantic Dairy Cooperative has a 78-year history of excellent service to its members. Financially strong, ADC guarantees a market for all member milk and excels in maximizing returns. ADC is a leader in providing equity payments, quality bonuses and over-order premiums to members. Nearly 4,000 dairy farmers agree that "ADC is the Place to Be". For free information on how you can secure the future of your dairy farm operation, write or call

Atlantic Dairy Cooperative
1225 Industrial Highway
Southampton, PA 18966
1-800-645-MILK

